

Fall Antique Tractor Pulls Release Results

DELTA (York Co.) — The Delta-Cardiff Volunteer Fire Company, in support of the Mason-Dixon Fair Association, sponsored an antique tractor pull Oct. 14. There were 113 pulls that lasted well after dusk.

More than 70 owner-operators brought more than 95 tractors of antique vintage (1960 and older) to test the track and the sled.

All proceeds from the pull benefit the 2001 Mason-Dixon Fair.

Following is a list of show placings.

MASON-DIXON ANTIQUE TRACTOR PULL RESULTS

(F) indicated the tractor pulled the entire 300' length of the track, the sled is reset at the end of the class. If there is more than one F/P, a pull-off is required.

2,800 Class (stock) 1 Lester Landis, Lititz, Pa on an Oliver 66 (F/P-150' 1") 2 Marlin Kreider, Washington Borough, Pa on a M Moline BF (F/P-125' 5") 3 Bill

Craig, Havre de Grace, Md on a John Deere (216' 5")

3,500 Class (stock) 1 Dan Wiggin, Rising Sun, Md on an Allis Chalmers WD 45 (204' 7") 2 T J Gentry, Rising Sun, Md on a Farmall Super C (185' 1") 3 Josh Zimmerman, Columbia, Pa on a Cockshutt 30 (167' 8")

3,500 Class (modified) 1 Dale Waltermeyer, Westminster, Md on an Allis Chalmers WC (200' 8") 2 Marlin Kreider, Washington Borough, Pa on a M Moline BF (159' 3")

4,500 Class (stock) 1 Jerry England, Rising Sun, Md on a Farmall Super H (223' 5") 2 Richard Zimmerman, Mount Joy, Pa on an Allis Chalmers WD 45 (223' 4") 3 Jack Kelly, Bel Air, Md on a Massey Harns 44 (214' 1")

4,500 Class (modified) 1 Richard Zimmerman, Mount Joy, Pa on an Allis Chalmers WD 45 (252' 0") 2 Jack Kelly, Bel Air, Md on a Massey-Harris (235' 3") 3 Brett Grundel, York, Pa on a John Deere B (234' 1")

5,500 Class (modified) 1 James Waltermeyer, Felton, Pa on a Farmall Super M (262' 11") 2 John Stauffer, New Holland, Pa on John Deere GM (262' 3") 3 James Waltermeyer, Felton, Pa on a Farmall M (256' 5")

5,500 Class (modified) 1. John Stauffer, New Holland, Pa on a John Deere GM (259' 0"). 2 James Waltermeyer, Felton, Pa on a Farmall Super M (253' 10"). 3. Dale Waltermeyer, Westminster, Md. on a Farmall Super M (251' 2")

6,500 Class (stock) 1 Judy Landis, Lititz, Pa on an Oliver 88 (272' 10") 2 Les Landis, Lititz, Pa on a Farmall M (254' 1") 3 Jason Baer, Glenville, Pa on a Farmall M (240' 8")

6,500 Class (modified) 1. John Davis on a John Deere GM (246' 8"). 2. Dale Waltermeyer, Westminster, Md. on an Oliver Super 88 (220' 8") 3 Bill Craig, Havre de Grace, Md. on a John Deere B (202' 8")

7,500 Class (stock) 1. Les Landis, Lititz, Pa on an Oliver Super 88 (F/P of 300') 2 Arnold Shackelford, Long Green, Md on a John Deere A (242' 4") 3 Mary Corun, Fallston, Md on a John Deere GN (217' 11")

7,500 Class (modified) 1 John Stauffer, New Holland, Pa John Deere (150' 3") 2 Andy Spurner, Glen Arm, Md on a Farmall Super M (133' 0") 3. Jack Ball, Churchville, Md on a Farmall M (122' 1")

8,500 Class (stock) 1 Robert Rowe, Nottingham, Pa on a John Deere 730 (F/P of 300'). 2 Jeff Douts, Little Britain, Pa on a John Deere 620 (174' 3")

8,500 Class (modified) 1 Glenn Hess, Washington, Pa on a Cockshutt 50 (245' 2") 2 Arnold Shackelford, Long Green, Md on a John Deere (213' 4"). 3 Keith Frey, Millersville, Pa on an IH 560 D (196' 3")

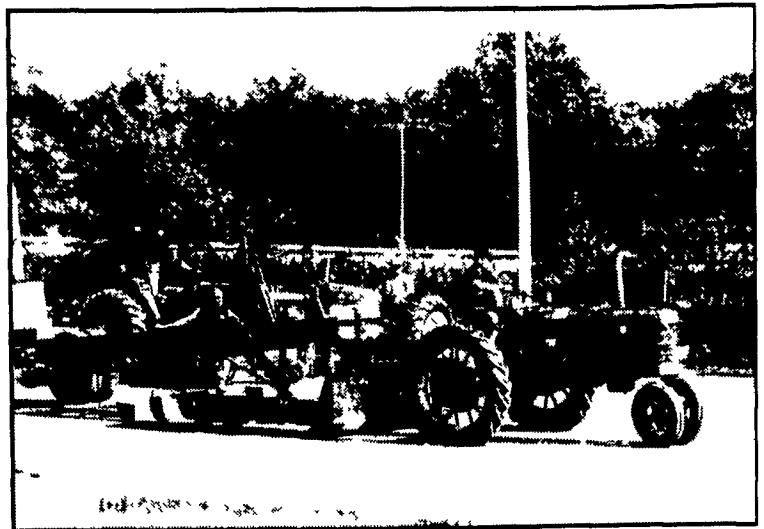
9,500 Class (stock) 1. Robert Rowe, Nottingham, Pa on a John Deere 730 (251' 2") 2 Ashley Wilhelm, Avondale, Pa. on Massey Ferguson 98 (228' 7") 3 Jeff Douts, Little Britain, Pa on a John Deere 730 (199' 10")

9,500 Class (modified) 1 Richard Zimmerman, Lititz, Pa. on an Oliver 88 (F/P at 300') 2 Robert Rowe, Nottingham, Pa on a John Deere 730 (242' 11"). 3 Ashley Wilhelm, Avondale, Pa on a Massey Ferguson 98 (238' 10").

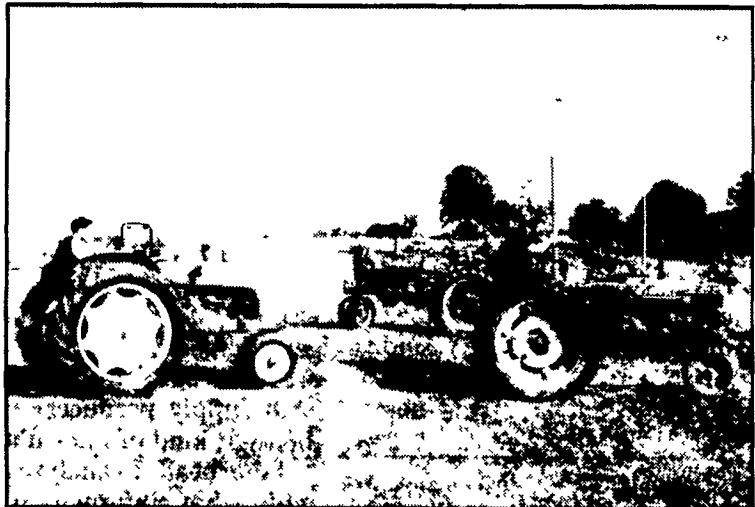
10,500 Class (stock) 1 Jim Huber, Peach Bottom, Pa on an IH 650 D (241' 5") 2 Jeff Douts, Little Britain, Pa. on a John Deere 730 (173' 9") 3. Vic Butler, Whiteford, Md on a John Deere 830 (105' 7")

10,500 Class (modified) 1 Les Landis, Lititz, Pa on an Oliver (F/P at 300')

12,500 Class (stock) 1. George Harns, Nottingham, Pa John Deere 820 (F/P-171' 0") 2. Jim Huber, Peach Bottom, Pa on an IH 560 S (F/P-157' 5"). 3 Vamon Horst, Rising Sun, Md on an Oliver 990 (F/P-139' 1")



Operator George Mitchell is pulling at the 4,500-pound stock class on a Farmall H tractor.



Operators waiting for their weigh-in. On the left is Josh Zimmerman, who placed third in the 3,500-pound stock class on a Cockshutt 30 tractor.

Agriculture Department Announces Standardbred Horse Sale Nov. 5-10

HARRISBURG (Dauphin Co.) — Agriculture Secretary Samuel E. Hayes Jr. announced the Standardbred Horse Sale will be Sunday, Nov. 5-Friday, Nov. 10, here at the Pennsylvania State Farm Show Complex.

"We are proud to host this world-class event," Hayes said. "Pennsylvania is an international landmark for the Standardbred industry, providing high-quality horses to the world."

More than 1,800 yearlings, broodmares, and racehorses will be sold during the six-day event, generating sales estimated at

\$40 million.

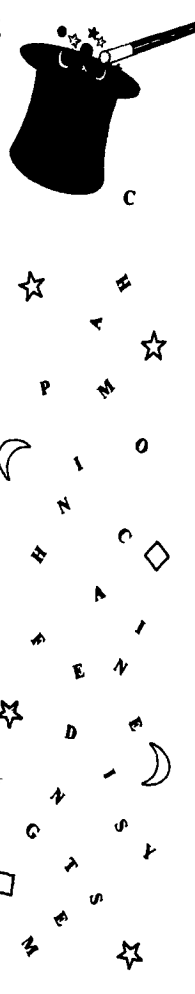
Founded in 1939, the Standardbred Horse Sale has grown to the largest Standardbred Sale in the world, drawing interested buyers from across North America, Europe, and the southern hemisphere.

Last year, an all-time record of 1,586 horses sold for \$47,885,600. Horses sold last year represented 20 states, Canada, France, Sweden, Italy, Norway, Denmark, Germany, Australia, and New Zealand.

Pennsylvania's agriculture-based commercial horse industry contributes more than \$1.1 billion to the state's economy.

FINDING YOURSELF A LITTLE BEHIND THE TIMES...

LET **HERSHEY** EQUIPMENT CO., INC. WORK SOME MAGIC FOR YOU!



Big Dutchman.

The Champion Chain Feeding System consistently outperforms other feeding systems with these benefit:

- Provides increased egg production and better feed conversions.
- Accurately measures feed throughout the grow-out cycle.
- The Champion 'presents' feed on the top of its flat chain, helping to eliminate risk of bird injury.
- Regulates the amount of feed from the hopper, keeping a consistent supply of feed on the chain.
- Provides uniform nutrition for every bird.

BEFORE and AFTER

For more information and free estimates contact:

HERSHEY EQUIPMENT CO., INC.

255-PLANE TREE DRIVE, LANCASTER, PA 17603 (717) 393-5807 FAX (717) 291-1534