

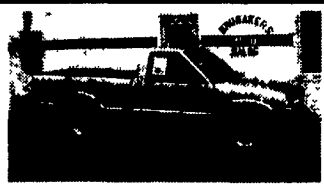
# BRUBAKER'S AUTO SALES

PH. 717-866-5287

Hours: Mon-Fri 9 a.m. - 5 p.m. Sat 9 a.m. - 5 p.m.

ROUTE 422

MYERSTOWN, PA.



99 CHEVY S-10, 2WD, Gray, 4 Cyl., 5 Sp., AM-FM ST, 21,008 Mi \$9,800



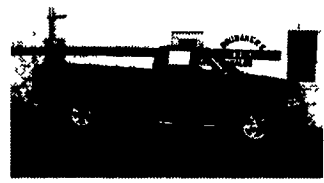
97 FORD F-150 XLT, 2WD, Black, V6, 5 Sp., AM-FM Cas, AC, PW, PL, CC, Tilt, 33,860 Mi \$10,900



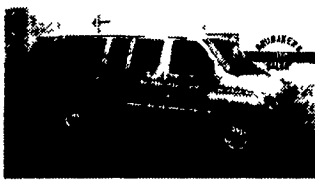
97 CHEVY VENTURE LS, Ext, Green, V6, AT, AM-FM Cas, PW, PL, CC, Tilt, Dual AC, Pwr. Seat, Keyless Entry, 46,865 Mi \$13,900



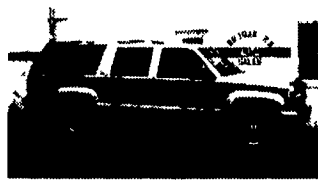
97 PLYMOUTH GRAND VOYAGER SE, Silver, 3.3 V6, AT, AM-FM Cas, PW, PL, CC, Tilt, Dual AC, 36,310 Mi \$13,600



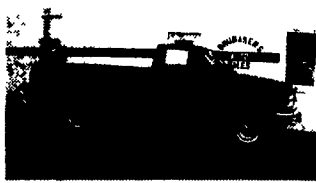
97 DODGE RAM 1500, 2WD, Laramie SLT, Black, 318 V8, AT, AM-FM Cas, AC, PW, PL, CC, Tilt, 41,225 Mi \$12,800



96 FORD CLUBWAGON MAXI, Silver, 351 V8, AT, AM-FM ST, PW, PL, CC, Tilt, Dual AC, 93,130 Mi \$11,900



92 GMC 2500 SUBURBAN SLE, 4x4, 9 Pass, Gray, 454 V8, AT, AM-FM Cas, AC, PW, PL, CC, Tilt, Pwr Seat, 84,725 Mi \$13,900



00 GMC 2500 SIERRA SLE, 4x4, Green, 350 V8, AT, AM-FM Cas, AC, PW, PL, CC, Tilt, 22,435 Mi \$19,900

Only 10 Minutes  
East of Lancaster

1-800-223-KEIM

(717) 768-8225  
(800) 223-KEIM

RT. 30 Lincoln Highway East  
Paradise, PA 17562

**KEIM**  
YOUR CHEVY GEO FAMILY



94 CHEVY FULL SIZE  
EXTENDED CAB  
4x4, 8 Cyl., AT, A/C,  
PW, PL, #00442A  
\$15,900



97 CHEVY FULL SIZE  
EXTENDED CAB  
4x4, 8 Cyl., AT, A/C,  
PW, PL, Cass



99 CHEVY FULL SIZE  
EXTENDED CAB  
4x4, 8 Cyl., AT, A/C, PW,  
PL, Cass.



NEW 99 CHEVY 1 TON  
Reg Cab 2WD, Stake Body,  
350 V8, AT, A/C  
MSRP \$27,206 Sale \$20,572



(2) BOSS 8 ft.  
SNOW PLOWS  
New & Almost New  
Starting at \$2,495



(2) 2000 CHEVY G30 CUT  
AWAY HIGH CUBE VANS  
14' & 16' Bodies, 350, AT, A/C,  
Both White



98 CHEVY K2500 4X4  
Extend Cab, 350 V8, AT, A/C,  
PW, PL, 36,000 Mi, White  
\$22,900

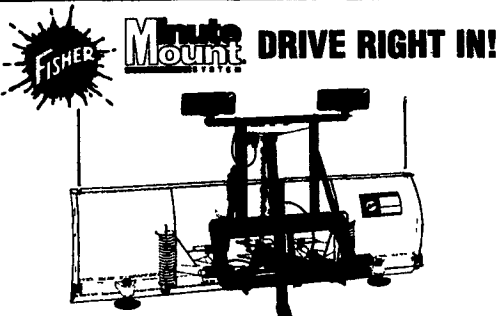


95 CHEVY FULL SIZE  
Reg Cab, 4x4, 8 Cyl., AT, A/C,  
PW, PL, Cass  
\$14,900

## DON'T WAIT - BE PREPARED!

### See Binkley & Hurst Bros. Inc.

Your Source For Quality Snow Plows From Home Owner To Heavy Duty Truck Mount Plows



**NOT ALL DETACHABLE PLOWS  
ARE CREATED EQUAL!**

- Drive-in attachments eliminate struggling with a heavy blade and attachments.
- Vertical Jack Stand guarantees proper height alignment.
- Two permanently mounted connecting pins means there's no chance of dropping them in the snow or losing them during storage
- One Piece detachable (not two) means faster on and off.

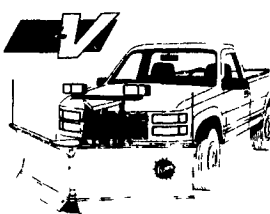
The Key To Easy Operation  
Is In Your Hand.

See Binkley & Hurst Bros. Today! Ask For Dean



This new state of the art, electronic control can be used with either the Solenoid EHP or the EC/SV Hydraulic System

- "CB" style mounting clip provided
- Unplugs for glovebox storage
- Automatic shut-off if not in use and automatic float in "down" position.



**THREE  
PLOWS IN ONE!**

Break through deep drifts in the "V" position or carry and stack in the "scoop" mode or use this 8-1/2' plow in the straight or angled position for conventional plowing

All blade functions are right in the palm of your hand with the hand-held FISH-STIK® control. The minute Mount System® for easy on/off, trip-edge blade and double acting cylinders, all make the EZ-V plow the ultimate plow for the professional plower.

**WE MOUNT  
V-PLOWS ON  
SKID LOADERS**



**FISHER SNOW  
PLOWS IN STOCK**  
Ideal For Plowing Long  
Driveways with Your  
4-Wheel Dr. Skidloader

**BINKLEY & HURST  
BROS. INC.**

133 Rothsville Station Rd.  
P.O. Box 0395  
Lititz, PA 17543-0395

(717) 626-4705  
1-800-414-4705  
Fax 717-626-0996



### 1991 Ford L8000 Aeromax single axle dump truck

7.8L, 9 spd. Roadranger trans, 10' bed, air gate, tarp, trailer hitch, equipped for air or electric brake trailer, 10' Meyer snow plow, nice truck, works everyday.

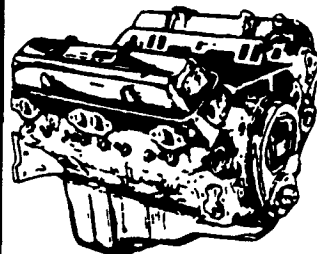
\$19,000

301-842-2113

# JONES

GENUINE  
GM Parts

Nothing's better  
than an original.



GM GOODWRENCH  
350 V8 1973-85  
Part Number  
10067353  
New Engine - Not  
Rebuilt  
36 Month or 50,000  
Mile  
Warranty

New Engine - No Core Fee **\$1,299<sup>00</sup>**

WE'LL  
MATCH ANY  
COMPETITOR'S  
PRICE!

Goodwrench  
Transmissions  
Now In Stock!  
Call For  
Great Prices

Call 394-0711 for prices on other  
New or Remanufactured  
Goodwrench Engines. 2.5 Liter thru  
454 cid. Gas and Diesel

Chevrolet - Pontiac - Olds - Buick - Cadillac - GMC

### JONES GM PARTS CENTER

1335 Manheim Pike, Lancaster, PA 17604  
Easily Located on Rt. 72 Just off of Rts. 283 & 30  
Hours: Mon-Fri 7:30 a.m. - 8 p.m. Sat 7:30-3  
(717) 394-0711

**MORE THAN JUST POWER.**



**PERFORMANCE  
PARTS**

36

**REAL  
ESTATE**

131 Ac of Mtn Ground for  
\$89,000 in Beach Creek,  
Clinton Co., Also More  
Available! 717-242-2945

For sale: Lebanon Co.,  
Heidelberg Twp. ranch  
home and barn on 2 1/2  
acres out in the Farming  
Country. \$129,900. Call  
Cathy Bomgardner  
717/273-7767, SUBURBAN  
REALTY 717/867-4487.

LAND NEEDED! Our  
builders and developers  
need residential land in  
Lancaster County. Part-  
nership programs, tax  
deferral and guaran-  
teed sales. CALL NOW  
717-581-4911 Ryan Hess  
RE/MAX Assoc.

Hunter's Delight, wooded  
10 AC. + A-frame home.  
Priced to sell fast Roemer  
Realty 570-339-5214

Southern Chester Co, PA.  
40 +/- ac all tillable farm,  
house & barn. \$525,000.  
Other sub-division options  
possible. 610-932-4952.

Farm for sale, 123 AC,  
southeastern York Co.,  
PA. Still has easement &  
building rights, currently  
w/beef & fat hogs.  
717-456-5467 eves

Horse ranch, Pocono  
area, 22 acres, large in-  
door arena round pen, 13  
box stalls, terms. Lacka  
570-842-6464

30+ AC Woods & field,  
2,800 ft road frontage,  
large bank barn, \$125,000;  
16 AC Hilltop, unbeliev-  
able views of the Blue Mt.  
southern exposure  
\$125,000. Owner  
570-943-2516

Central Wisc. 12+ acres  
(Mennonite area) on  
state road. Newer multi-  
level 4BR house, 3 sheds,  
loafing barn w/feed lot  
w/32 stanchions. All well  
kept. \$185,000 firm.  
715/669-3416.

### Cash For Farm Mortgages

Buying notes secured by farm mortgages,  
cattle or equipment. If you hold paper and  
would rather have cash now, call

**Tom McAbee (716) 243-5174**

Bankruptcy, litigation and delinquency are no problem

### Beautiful West Virginia Farm

490 acres includes 100 acres  
woodland plus level to rolling fields  
and pasture. Great location.

Call today 304/538-6634