

**1980 International PS 5000**, 6x6, AWD, 3200 Gal., Pres./Vacuum Tanker, 290 Cummins, Diesel, 10-Spd., GVW 64,000 Lbs., Includes New Bk-up, PB 8-Vac./Pump.  
**\$35,000 OBO**

**717-495-9668 or 747-9614**

1980 Dodge pickup, 10,000 gvw, 4spd, Reading utility bed, \$1500. 570/754-3009.

91 FL120 F'liner, tandem axle, 22' aluminum grain dump, 400hp Cummins w/jake, 25k on rebuild, new clutch & brakes, air ride. 717-589-7481.

**MOTORS**  
**New & Rebuilt**  
350, 366, 427, 454  
6.2 Diesels  
**Rebuilt & Used**  
Will Install  
**717-762-6415**

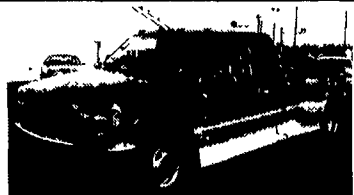
The All New

# SPANKEY'S

of Mechanicsburg

Main Street, Mechanicsburg, PA

**717-737-7777 1-888-SPANKEY**



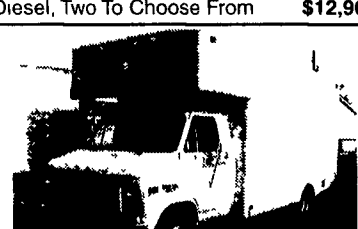
90 GMC 2500 SLE Ext. Cab, Dually 454 V8 Loaded, Was \$12,995 Reduced To  
**\$10,963**



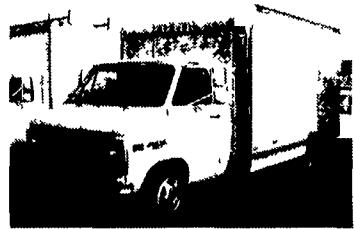
95 Isuzu NPR Box Trk., White, 4 Cyl., 18' Box, 5 Spd, PS, PB, #11990, Turbo Diesel, Two To Choose From **\$12,967**



85 Ford E350 Tan Box Trk., V8, 14' Box, AT PS, PB, Etc, #11893 **\$4,913**



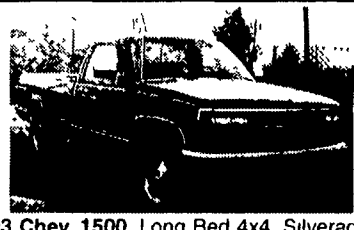
87 Chev. G30, White, 14' Box Trk., V8, AT, PS, PB, Nice!, #11914 .....**\$6,973**



95 Chev. G30 Box Trk., 12' Box, 54,000 Mi., PA 1 Owner, White, V8, AT, PS, PB, AC, #11951 **\$12,913**



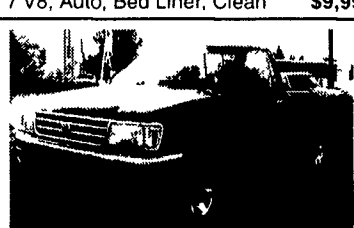
91 Ford E350, 14' Box Truck, 351 V8, Auto, Serviced, Only 44,000 Miles Reduced to **\$8,973**



93 Chev. 1500, Long Bed 4x4, Silverado, 5.7 V8, Auto, Bed Liner, Clean **\$9,995**



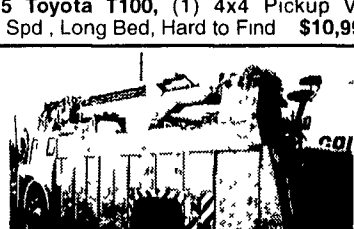
2000 Dodge Dakota SLT, Club Cab Extended Pickup 4x4, V8 MPF, Automatic, Grill & Brush Guard, 12,000 Miles, Beautiful **\$20,995**



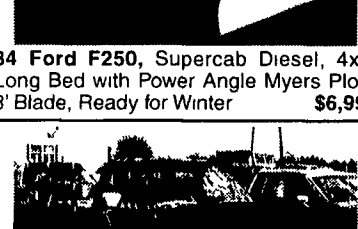
95 Toyota T100, (1) 4x4 Pickup V6, 5 Spd., Long Bed, Hard to Find **\$10,995**



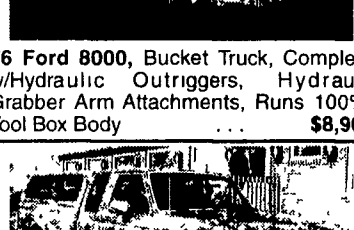
84 Ford F250, Supercab Diesel, 4x4, Long Bed with Power Angle Myers Plow, 8' Blade, Ready for Winter **\$6,995**



76 Ford 8000, Bucket Truck, Complete w/Hydraulic Outriggers, Hydraulic Grabber Arm Attachments, Runs 100%, Tool Box Body **\$8,967**



82 Toyota Stake Body, Runs Great, 6/01 PA State Insp., Great Field Truck **\$895**



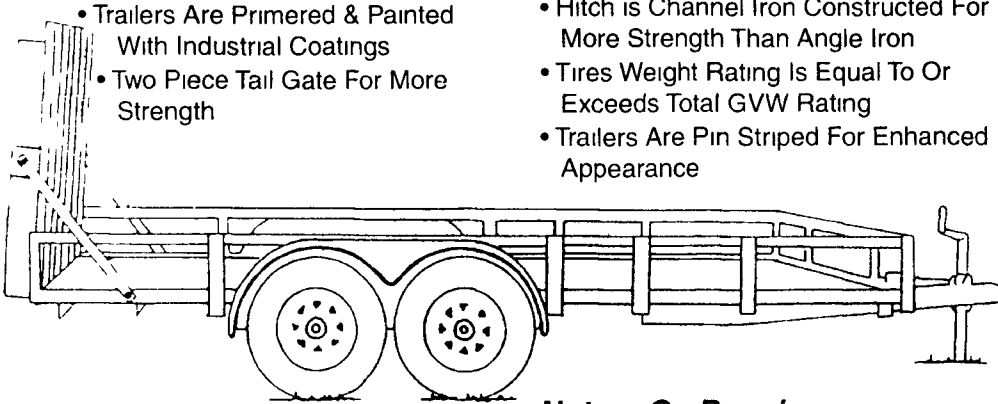
97 Ford F250, Long Bed, 4x4, Heavy Duty XLT, 5.8 V8, Auto Loaded **\$18,900**



82 Ford 9000 Dump Truck, Cummins, 10 Spd., Plumbed for trailer brakes, new tires... **\$10,981**

## Why Buy A PA International Trailer?

- 6 Month Trailer Warranty
- Tire Warranty In Writing
- Dexter Axles With 1-Year Warranty
- Tear Drop Fenders For Added Strength
- Flooring Is 2" Hemlock Planking
- DOT Approved Lights Are Better Protected
- All Wiring Is Run Through Conduit
- Trailers Are Primered & Painted With Industrial Coatings
- Two Piece Tail Gate For More Strength
- 1" Solid Pin For Gate Hinge Is More Reliable
- 2000' Jack With Bottom Foot & Emergency Break Away Kit Installed
- Includes Safety Chains & Tie Down Pockets
- Bottom Of Trailer Is Primered & Painted, Not Left Unfinished
- Hitch Is Channel Iron Constructed For More Strength Than Angle Iron
- Tires Weight Rating Is Equal To Or Exceeds Total GVW Rating
- Trailers Are Pin Striped For Enhanced Appearance



Notary On Premises  
Temp. Tags Available

Over 300 Trailers In Stock!

## KUTZ FARM EQUIPMENT, INC.

Pine Grove, PA • 570-345-4882

Over 40 Models Including Dumps!

# KELLER BROS.

(Buffalo Springs) Lebanon, PA

**717-949-2000 or 1-800-363-2767**

**LEBANON COUNTY'S HEAVY DUTY TRUCK HQTRS.**

Over 100 Clean Pre-Owned Vehicles  
In Stock At All Times!!

<p><b>SPECIAL EDITION</b> 2000 FORD F150 SUPER CAB FLARE SIDE HARLEY TRUCK Best of Everything Limited Production</p>	<p>1991 GMC SUBURBAN 4x4 Silverado, 5.7 V8, AT, A/C, PW, PL, Barn Doors, 1-Owner</p>	<p>1999 FORD EXPEDITION XLT V8, AT, A/C, PW, PL, 3rd Seat, One Owner, Only 15,000 Miles</p> <p>Also '98 Eddie Bauer 22K</p>	<p>1996 FORD F250 4x4 XL V8, AT, A/C, Dump Bed, Low Miles</p>
<p>2000 TOYOTA RAV 4 4x4, 5-Spd., A/C, Alloy Wheels, AM/FM/Cass., 1-Owner, Low Miles</p>	<p>2000 FORD EXCURSIONS LTD 4x4, 7.3 Turbo Diesel or Gas 8 Passenger, Best of Everything. 4 to choose from.</p>		<p>1994 FORD F150 SUPER CAB Flare Side, 4x4, XLT, AT, A/C, Leather Captain Chairs</p>
<p>1998 DODGE DAKOTA SLT CLUB CAB 4x4, V8, AT, A/C, PW, PL, One Owner, Clean</p>	<p>1999 FORD WINDSTAR LX AT, A/C, PW, PL, Save \$\$ (4 To Choose From)</p>	<p>94 FORD E150 CLUB WAGON 1-Owner - Very Clean, Dual Air</p>	<p>1999 FORD F250 SUPERCAB 4x4 Diesel, AT, XLT Trim</p>
<p>1994 FORD F350 4X4 DUMP 7.3 Diesel, 5 Spd., One Owner, Very Good Condition</p>	<p>1999 CHEV. 2500 SILVERADO LS 6L V8, AT, A/C, PW, PL, 1-Owner, Only 6,800 Miles</p>	<p>1996 FORD F250 SUPERCAB 4X4 AT, XLT, 460 Gas, Loaded With All Options, Tan</p>	<p>2000 FORD F750 Reg. Cab, Cat Diesel, 33,000 GVWR, 7 Sp., Manual Trans. List \$50,736 Sale <b>\$39,944</b> Last One - Bodies Available</p>
<p>1977 GMC 7500 DIESEL 5 Spd. w/2 Spd. Rear, 38,200 GVW, Galion Dump Body, 66,000 Miles SPECIAL <b>\$3,410</b></p>	<p>1995 FORD F250 XLT, 4x4, V8, AT, A/C, PW, PL, Only 60,000 Miles, Clean</p>	<p>1999 FORD F350 CREW CAB XLT 4x4, 7.3 Turbo Diesel, At, A/C, Most Options, Local 1-Owner Trade</p>	<p>82 Ford 9000 Dump Truck, Cummins, 10 Spd., Plumbed for trailer brakes, new tires... <b>\$10,981</b></p>

**KELLER BROS. FORD HAS SERVED CENTRAL PENNA. AREA FOR MORE THAN 78 YEARS.**

