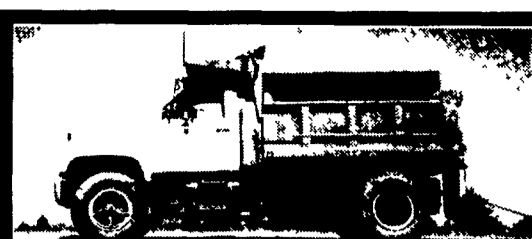


1946 CHEVROLET

4 Spd., Green/Black Fenders, Totally Restored In And Out
\$10,000

Call After 7 P.M. M-F

Anytime Sat., Sun. **(540) 364-2668**



1990 GMC TOPKICK

26,000 GVW, 9 ft. Heil Dump, Tool Box, Pintle Hitch and Receiver, Elec. Brake Controller, 366 V8, 5 Spd., Great Shape!

\$15,000

410-357-4700



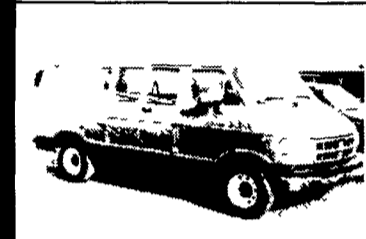
1999 DODGE 2500, 12 Pass 318 Auto PS, PB, PW, PDL, Cruise Tilt, Dual Air, AM/FM/Cass, Forest Green, 23000 Mi, with Bal of Factory Warranty **\$18,500**



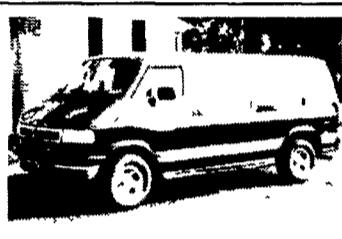
1999 FORD XLT E150, 8 Pass, Club Wagon 46 Triton Auto PS, PB, PW, PDL, Cruise Tilt, Dual Air, AM/FM/Cass, Dark Blue, 13000 Mi With Bal of Factory Warranty **\$18,900**



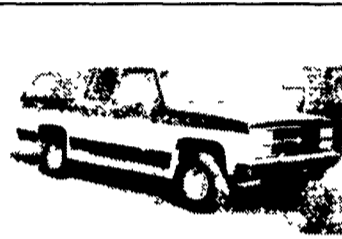
1999 DODGE 2500, 8 Pass, 318 Auto, PS, PB, PW, PDL, Cruise, Tilt, Dual Air, AM/FM Cass, 19,000 Mi With Bal. of Factory Warranty... **\$17,900**



1997 DODGE 2500, 8 Pass 318 Auto PS, PB, Air, AM/FM, Vinyl Seats & Rubber Mat, Blue, 37000 Mi, Ex Cond **\$11,900**



1996 DODGE 2500 MARK III CONVERSION, 318 Auto PS, PB, PW, PDL, Cruise, Tilt, Air, AM/FM Cass, 55000 Mi Burgandy & Silver, Ex. Cond **\$11,500**



1991 CHEVY SILVERADO 1500 4x4 SUBURBAN 350, Auto PS, PB, PW, PDL, Cruise Tilt, Air, AM/FM Cass, Towing Package, 8 Pass., Tu. Tone Blue, 92000 Mi., Ex. Cond... **\$10,900**

A&J AUTO SALES

798 E. Main St., Rt. 322 East, Ephrata, PA 17522 • 717-733-2873



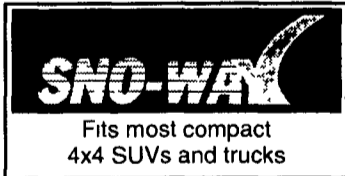
Truck & Trailer Parts & Accessories
Distributor

HOURS
Mon, Tues, Wed & Fri 8-5,
Thurs 8-8, Sat 8-2

7760 Allentown Blvd. www.allproproducts.com 6250 Carlisle Pike
Harrisburg 717-671-9115 Mechanicsburg 717-795-9116
Trailer Repairs & Fabrication 717-795-9902
Orders 800-622-7003



WORTHINGTON TRAILERS
Snowmobile Trailer w/Lift Top All Aluminum w/Front Acc Door Available Sizes 102x10 • 102x12
PRICES STARTING AT \$2,095



Fits most compact 4x4 SUVs and trucks

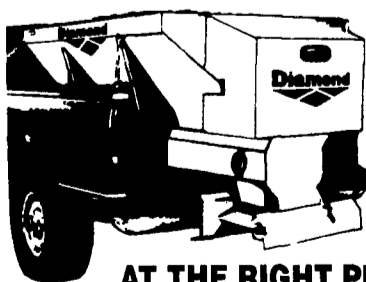
A.R.E. TRUCK CAP & LIDS • TRUCK ACCESSORIES



SNOW PLOWS by Meyer

- ◆ Trip Edge Design
- ◆ More Pronounced Blade Curve
- ◆ Lift Unit - Electric Hydraulic
- ◆ Pull-Away™ Mounting & Easy Hitch Attaching System
- ◆ Diamond Snow Plows Meet Your Demand
- ◆ All Sizes To Fit The Following Vehicles:
Sub Compact SUVs & Pickups
Mid Size SUVs & Pickups
Full Size SUVs, Pickups, Commercial

DIAMOND HAS SPREADERS...



...AT THE RIGHT PRICE

STANDARD FEATURES

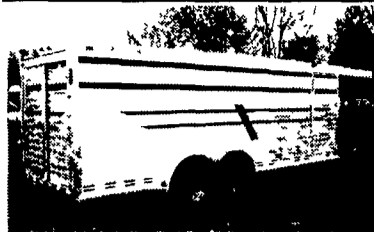
- ◆ Self Contained
- ◆ 2 Yard Capacity
- ◆ 8' Length for Heavy Duty Pickups
- ◆ Variety of Options
- ◆ In Cab Electric Speed Control
- ◆ 10.5 HP Commercial Grade Briggs & Stratton Gas Engine
- ◆ All Sizes

Authorized Sales & Service

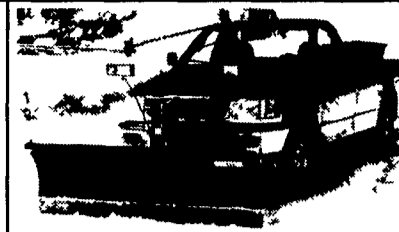
TRAILER PARTS & ACCESSORIES • TRAILER INSPECTION & SERVICE



Phoenix TRAILERS → **Aluminum WORTHINGTON Trailers** →



2000 CHEROKEE WARRIOR
20 Stock Trailer Complete Rubber Mats, Divider With Outside Release, Plexiglass Slat Closure,
14,000 lb GVW **\$12,265**

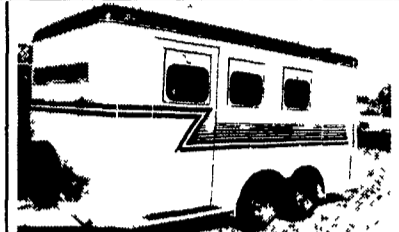


WESTERN SNOW PLOWS
Quickly and Easily Removed When Not In Use

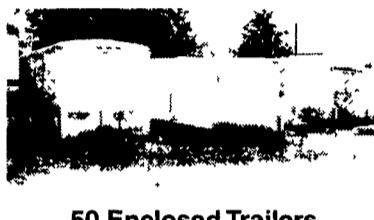
FINANCING AVAILABLE - TRADE-INS ACCEPTED



1991 Big Valley
16 Ft. Gooseneck **\$2,900**



1993 Bee 3 Horse Slant
w/Dressing Room & Tack Compartment Used Very Little **\$4,850**



50 Enclosed Trailers
In Stock



New & Used
Open Utility Trailers
Various Sizes

YARNALL'S EQUIPMENT CO., INC.

4171 Horseshoe Pike (Rt. 322) Honey Brook, PA 19344
(610) 273-9200 • 1-888-900-7669
Open 6 Days - Til 7:00 P.M. Tuesdays



4X4's

- 98 Ford Ext. Cab 3 Dr Tk**, 1/2 Ton, XL, 4 6 V-8, Auto, PS, PB., A/C, CC, Tilt, Cass, Green/Silver
- 97 Ford Tk**, 1/2 Ton, XL, 6 Cyl, Auto, PS, PB., A/C, AM-FM, Cap, 39,000 Mi., Green
- 97 Chev. Ext. Cab Tk**, 1/2 Ton, Silverado, 350 Vortec V-8, Auto, P.S., P.B., A/C, CC, Tilt, PL., P.W., P. Mirrors, Cass, CD Player, Cap, Black
- 96 Ford Explorer Sport**, 2 Dr, 4.0 V-6, 5 Spd, PS, PB, A/C, CC, Tilt, PL., P.W., Cass, 37,000 Mi., Red
- 94 Ford Explorer 4 Dr, XLT**, 4.0 V-6, Auto, PS, PB, A/C, CC, Tilt, PL., P.W., P. Seat, CD Player, Factory Sunroof, Burg
- 94 Chev. Suburban**, 1/2 Ton, Silverado, 350 V-8, Auto, PS, PB., Dual Heat & A/C, CC, Tilt, P.L., P.W., P. Seat, Cass, 8 Pass, 65,000 Mi., Red
- 91 Chev. Blazer**, Scottsdale, 350 V-8, Auto, P.S., P.B., A/C, Radio, 50,000 Mi., Blue
- 89 Chev. Suburban**, 1/2 Ton, Silverado, 350 V-8, Auto, P.S., P.B., A/C, Tilt, P.L., P.W., AM-FM, Blue/Silver
- 89 Chev. Tk**, 1/2 Ton, Silverado, 350 V-8, Auto, P.S., P.B., A/C, CC, Tilt, AM-FM, Burg/Silver.
- 88 Chev. Tk**, 1/2 Ton, Silverado, 350 V-8, Auto, P.S., P.B., A/C, CC, Tilt, P.L., P.W., AM-FM, Brown/Tan
- 94 Chev. S-10 Blazer**, Tahoe, 4 3 Vortec V-6, Auto, P.S., P.B., A/C, CC, Tilt, P.L., P.W., Cass, Black
- 96 Jeep Cherokee Sport**, 4 Dr, 4.0 6 Cyl, Auto, PS, P.B., A/C, Tilt, Am-FM, 50,000 Mi., White

2WDs

- 94 Chev. Ext. Cab Tk**, 1/2 Ton, Silverado, 350 V-8, Auto, P.S., P.B., A/C, CC, Tilt, P.L., P.W., AM-FM, 63,000 Mi., Burg/Silver
- 93 Ford Ext. Cab Tk**, 3/4 Ton, 8' Bed, XLT, 351 V-8, Auto, PS, P.B., A/C, CC, Tilt, PL., P.W., P. Mirror, Cass, Black/Silver

VANS

- 96 Ford Windstar GL**, 3 8 V-6, Auto, PS, PB., Dual Heat & A/C, CC, Tilt, P.L., P.W., Cass, 59,000 Mi., Lt Tan Met
- 94 GMC Cube Van**, 3500 HD, 14,000 GVW, 14' Box, 350 V-8, Auto, P.S., P.B., AM-FM, White
- 93 Chev. Astro Ext. LT**, 4 3 V-6, Auto, PS, PB., Dual A/C, CC, Tilt, PL., P.W., Cass, Blue

CARS

- 94 Merc Tracer SW**, Trio, 1 9 4 Cyl, Auto, PS, PB., A/C, AM-FM Cass, Mint Green

TRUCK & VAN ACCESSORIES FOR CHRISTMAS

- Hitch Haul
- Running Boards
- Bed Liners & Mats
- Bug Deflectors
- Bed Rails
- Tailgate Protectors
- Truck Steps
- Grill & Brush Guard
- Castle Car Care Products
- Sun Visors/Cab Extenders
- Fog & Driving Lights
- Fender Flares
- Molded Floor Mats
- Taillight/Headlight Cover
- Frame Mounted Bed Covers
- Dash Covers
- Step Bars
- 5th Wh. Louvered Tailgate
- Window Ventshades/Ventvisors
- **PLUS MUCH, MUCH MORE**

B&B AUTO SALES
(717) 632-1343

2 1/2 Miles South of Hanover, On Rt. 94 (Baltimore Pike)
Hours: Mon., Tues., Thurs. 8-8; Wed. & Fri. 8-5; Sat. 8-12
Family Owned & Operated Since 1972



DRAW-TITE HITCH & TOWING PRODUCTS

BEDLINERS • SNOWPLOWS

