

BRENNER

PHONE: 717-232-4271
www.brennerdodge.com Fax: 717-233-8221

RON JACKMAN
Business Link Account Manager

The New Commercial Sales Group

RAY MARINO
Business Link Account Manager

Harrisburg's Only BusinessLink Dealer "Saving the Small Business Owner Time, Money & Hassles"



2000 DODGE RAM 3500 CAB & CHASSIS
(2) 4x4 & (1) 4x2, 3 In Stock, Gas, Your Choice Of Body



2000 DODGE RAM 3500 SLT CUSTOM BUILT V8, 4x4, Heil Dump, Diamond Heavy, Duty Plow



2000 DODGE 350 4X4 Stahl Grand Challenger Utility Body, AT, A/C

\$2,800 Rebate Available On 2000 Leftovers



97 DODGE RAM 1500 CLUB CAB
V8, Short Bed, Bed Rail, AT, A/C, 57,000 Miles



99 DODGE RAM 1500 SLT 2 WD, 8 Ft. Bed, V8, Most Options, AT, 11,000 Miles



Priced To Sell
98 FORD F150 XLT
4x4, Long Bed, V6, 5 Speed, 35,000 Miles, Most Options

1812-1830 Paxton St., Harrisburg, PA 17104

PRE-OWNED TRUCKS

- 1993 Chevrolet 1500 Silverado, Red, 74 704 Miles, AT 8 Cyl
- 1996 Chevrolet G20 Cargo Van, Red, 80 240 Miles, AT, 8 Cyl
- 1995 Dodge Dakota Club Cab 4x4, Green/Gray, 73,900 Miles, AT, 8 Cyl
- 1991 Dodge B250 Cargo Van, 184,193 Miles, AT, 8 Cyl
- 1998 Dodge Ram Conversion Van, White, 30,281 Miles, AT, 8 Cyl
- 1999 Dodge 1500 SLT, Gray 10,951 Miles, AT, AC, 8 Cyl
- 1995 Dodge Dakota Club Cab Sport, White, 83 321 Miles 5 Spd., AC
- 1998 Dodge 2500 Club Cab, 4x4 Blue, 18,321 Miles, AT, 8 Cyl
- 1997 Dodge Ram 2500 SLT, Green/Gray, 54,452 Miles, AT 8 Cyl., 4 WD
- 1998 Dodge 1500 SLT Quad Cab Green, 78,413 Miles AT, 8 Cyl., 4WD
- 1997 Dodge Dakota SLT Club Cab, Blue, 52,509 Miles, AT, 6 Cyl 4 WD
- 2000 Dodge Dakota Sport Club Cab, White, 6,930 Miles, AT, 6 Cyl
- 1998 Ford F150 XLT Ext, Red, 44,601 Miles, AT, 8 Cyl 4 WD
- 1996 Ford Windstar GL, Black 90,160 Miles, AT, 8 Cyl
- 1999 Ford Ranger XLT Super Cab, Red, 18,935 Miles, 5 Spd., 6 Cyl., 4 WD
- 1997 Ford Aerostar XLT, Red 32,123 Miles, AT, 6 Cyl
- 1995 Ford F150 XLT Club Cab, Blue, 91,531 Miles, AT, 8 Cyl., 4WD
- 1996 Ford Ranger Super Cab XLT, Green, 47,871 Miles, 5 Speed 6 Cyl., 4WD
- 1995 Ford Explorer XLT White 73 531 Miles, AT, 6 Cyl., Leather
- 1998 Ford F150 XLT Blue, 35,432 Miles, 5 Spd., 6 Cyl., 4 WD
- 1999 Ford F250 XL, White 35,783 Miles, AT, 4WD, Dsl



1992 GVM Slide-In Unit For Pickup,
16 hp Engine, All Hyd., Ravens Controller, 400 Gal. Poly Tank, Foam Markers, Good Condition **\$7,900**
Franklin Co. **717-263-6231**



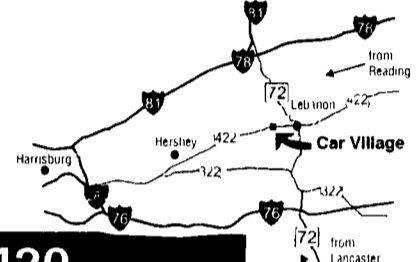
96 Chevy 1500 Silverado 4x4, Ext. Cab,
95,000 Mi., Vortec 350 Motor, A.T. **\$10,900**
670/374-1958

Business Hours:
Mon.-Fri. 9 to 9;
Sat. 9-4

2300 W. CUMBERLAND ST. (Rt. 422) LEBANON, PA 17042 (Across From Lebanon Valley Mall)

CAR VILLAGE

HEAVY DUTY TRUCKS



PHONE 717-274-2000 Toll Free 1-800-650-1420



NICE 79 CHEVY DUMP TRUCK
Excellent Body, 350 V8, 4 Spd Trans, Current Insp & Ready To Go



\$28,900
2000 FORD F250 QUAD CAB 4 WHEEL DRIVE
Great Price on a Nice Truck Only 3,000 Miles, Remaining New TK Warranty, Powerstroke Diesel, AT, AC



GRAIN BODY DUMP - 99 FORD SUPER DUTY 450
4 Wheel Drive, Powerstroke Diesel, 6 Sp, A/C, 12 Ft Body, 4 Ft Sides, Swing Open Rear Gates, Frame Mount Tool Box, Tow Pkg, Hitches, New Tk Warranty



4 DOOR SHORT BED, 4 WHEEL DRIVE
2000 FORD F250 XLT Like New, All Remaining New Truck Warranty From Ford, Only 17,000 Miles, Powerstroke Diesel, 6 Spd, Loaded XLT Pkg, Aluminum Wheels



\$8,900
93 FORD F250 4 WHEEL DRIVE
Heavy Duty, 3/4 Ton, V8, 5 Sp Trans - Lock Out Hubs, Great Work Truck



99 FORD 450 CREW CAB
4 Wheel Drive, Rare Truck, Powerstroke Turbo Diesel AT, A/C, Chrome Simulators, Low Profile Trailer Tow Body



550 CHASSIS CAB - 99 FORD SUPER DUTY
Heavy 17,500 GVW, 201 WB, Remaining New Truck Warranty, Powerstroke Turbo Diesel, 6 Sp., A/C, AM/FM Radio, Like New



IT' AIN'T PRETTY BUT IT'S CHEAP \$17,900
99 FORD F250 QUAD CAB 4X4
Runs Great, 68,000 Miles, Triton 5 4 V8, AT, A/C, Vinyl Seat & Floor



BLACK BEAUTY 97 FORD F250 SUPER CAB
4 Wheel Drive, Only 41,000 Miles, Loaded XLT, Powerstroke Diesel, AT, A/C, Capt. Chairs, Tow Pkg, Aluminum Wheels, Dual Tank



4x4 SUPER CAB MECHANICS BODY
89 CHEVY K2500
A Rare Find, 350 V8, AT Only \$8,900



FLATBED DUMP, 95 CHEVY TILTMASTER
4 Cyl Intercooled Turbo Diesel, AT, 12 Ft Bed, Steel Floor, Pull Out Ramps, Runs & Works Well



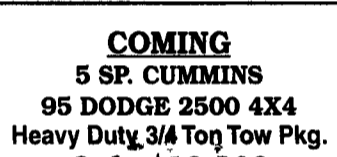
CREW CAB 4X4, 97 FORD F350 XLT
Nice, Clean, Good Running Truck, Powerstroke Diesel, AT, Loaded XLT, Lock Out Hubs, Aluminum Wheels, Limited Slip Gear, Check It Out



98 DODGE 2500 4X4 5 SP CUMMINS
Nice, Clean Truck, Only 37,000 Miles, Cummins Turbo Diesel, 5 Sp., Tow Pkg., Remainder New Tk Warranty



SUPER DUTY DUMP - 97 FORD
Super Clean, Super Nice, Only 12,700 Miles, You Won't Find Any Nicer, Powerstroke, AT, 10 Ft. Body, Heavy 15,000 GVW



COMING
5 SP. CUMMINS
95 DODGE 2500 4X4
Heavy Duty 3/4 Ton Tow Pkg. Only \$18,900



5 SPEED 1 TON 97 FORD F350 XLT
4 Wheel Drive, Solid Front Axle, Lock Out Hubs, Dual Tanks, Beautiful Two-Tone Paint



QUAD CAB SHORTBED 4 WHEEL DRIVE
98 DODGE 2500
24 Valve Cummins Diesel, 5 SP Trans., A/C, Chrome Wheels, Tow Pkg., Nice Driver



93 DODGE CLUB CAB DUALLY
2 Wheel Drive, Great Tow Machine, Strong Cummins Turbo Diesel, 5 Sp Trans Real Clean Inside & Out, 98,000 Original Miles \$16,900



4 DOOR 4X4, 96 FORD F250 XLT
They Don't Come Any Nicer, Perfect Inside & Out, Only 35,000 Miles, 460 V8, AT, A/C, Loaded XLT, Aluminum Wheels



\$3,900
82 CHEVY 4 WHEEL DRIVE
Diesel Power, Auto, Excellent Body, Runs Well



2 WHEEL DRIVE - 99 FORD F250
XL Package, A/C, 6 Speed Trans., Powerstroke Turbo Diesel, Limited Slip Axle, Like New, All New Truck Warranties



4x4 MECHANIC'S BODY 96 GMC K3500
Single Rear Wheel, 1 Ton, 350 Fuel Inj., V8, AT, A/C, Very Clean, Only 51,000 Miles



4X4 DUALLY 98 DODGE 3500
Cummins Diesel, 5 Sp Laramie SLT, A/C, Full Power, 4 10 Gear, Only 30,000 Miles, Remainder New TK Warranty, Great Tow Machine



GAS 4X4 97 FORD F250
Heavy Duty, 3/4 Ton, Only 46,000 Clean Miles, 351 Fuel Inj., V8, AT, A/C, Limited Slip 4 10 Gear, Dual Tank, Priced Right Only \$18,900



14 FT FLATBED, 98 CHEVY HD 3500
Awesome Tk., 15,000 GVW., 19 5 Rubber, Vortec 454 V8, Auto., A/C, 30,000 Clean Miles



DIESEL CARGO VANS
We Have 2 - 2000 Ford E-350 & 1998 Ford E350, Powerstroke Turbo Diesel, Auto., A/C, Remainder New Tk Warranty, Call For Details



THE NICEST ONE ANYWHERE! 97 FORD F250
SUPER CAB 4 WHEEL DRIVE
It is Perfect! You Must See! 21,000 Miles, Loaded, All Options, 351 F1V8, AT, A/C, Aluminum Wheels, Dual Tanks & Lots More



4X4 DUMP - 2000 FORD F350
Like New, Only 2,400 Miles, Powerstroke Turbo Diesel, 6 Sp., A/C, New Truck Warranty



460 V8 5 SP 96 FORD F250 4X4
Heavy Duty 3/4 Ton Pickup, Ready For Work - Strong Fuel Inj., V8, 5 Sp Trans., A/C, Lock Out Hubs, Trailer Tow Mirrors, Excellent Condition Inside & Out, Only 88,000 Original Miles



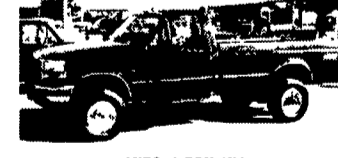
BIG BAD DODGE 2000 QUAD CAB DUALLY
4 WHEEL DRIVE LIKE NEW, All Factory Warranties Only 11,000 Miles 24 Valve Cummins AT A/C All Options, Chrome Wheels, Tow Pkg 4 10 Gears & Dana Axles, All The Good Stuff



5 SP CUMMINS
97 DODGE 2500 4X4
Only 12,000 Miles, Cummins Turbo Diesel A/C Frt & Rear Dana axles, Chrome Wheels Just Like New



17 ALUMINUM DUMP BODY
99 ISUZU N PR
Only 15,000 Miles, Turbo Diesel, AT A/C Multi-Purpose Body



AUTO 1 TON 4X4
97 FORD F350 s
2 Available, Powerstroke Turbo Diesel, AT A/C Dual Tank, Solid Front Axle



96 FORD F250 SUPER CAB 4X4
Look At This One! Only 34,000 Miles Heavy Duty 3/4 Ton Powerstroke Diesel, 5 Sp A/C 4 10 Gear Lots of Power



\$28,500
99 DODGE 2500 Quad Cab Pickup, 4 Wheel Drive,
24 Valve Cummins, Runs Real Strong, AT, A/C, Tilt, Cruise, Power Mirror, Locks & Windows, Gorgeous Interior, Tow Pkg, Chrome Wheels