

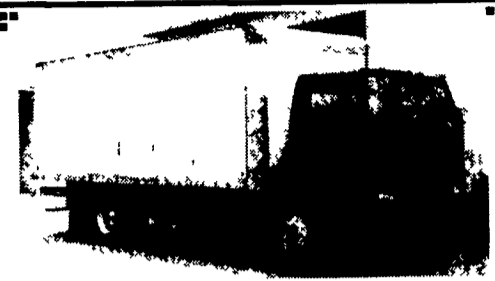
East Coast Trailers
Honesdale, PA • 570-729-8870

7X20 Tandem axle trailer, very good shape, no license, great for hauling round bales, \$800. 570-378-2470.

40' aluminum van trailer for storage, \$1000. 570/754-3009.

1999 Hudson trailer, tandem 5k axles, deck over wheels, 16' flatx3' dove-tail w/heavy duty ramps, \$2600 OBO; Wind deflector for 1 ton shed or hay hauler, \$200 OBO. Elmer, NJ, 856/692-2227.

25' 20,000 lb. gooseneck.....\$5,300
23' 14,000 lb. gooseneck.....\$3,595
Other Models & Sizes in Stock



1986 Ford Cargo 7000 diesel, 22' box 29,500 GVW, 5x2 transmission, 148,000 Miles, Good Condition \$6,900 OBO
610-593-6927

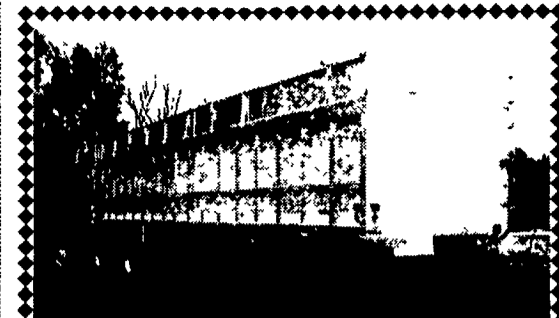
1957 Ford dump truck, 7 ton, runs great, needs inspection/farm truck, \$1,395. Call Richard 610-942-3142.



'86 Peterbilt 349

Tri-Axle, 3306-300 HP CAT, 18k on Front, 46k Rears, 8LL Trans. PS. AC, Auto Tarp, New Drum & Brakes, Good Tires, Setup For Trailer With Air Brakes, Great Shape.

Must See **\$28,000**
215-721-4953



1985 Ti-Brook Dump

38' Frameless 80" Sides, Air Ride Susp Spread Axle, Front Axle Lifts Up, 2 Way Gate, Coal Chute, Roll Tarp

717-367-5272

3208 CATERPILLAR



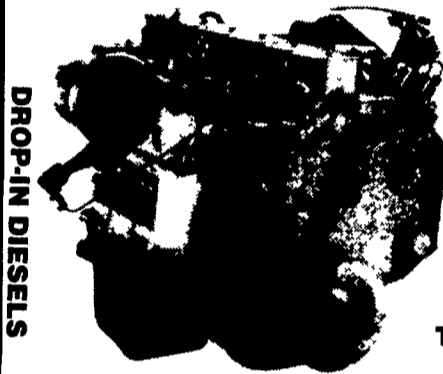
ENGINE TRANSMISSION WAREHOUSE, Inc.

2857 Peters Mtn. Rd.
Halifax, PA 17032

1-800-507-4359

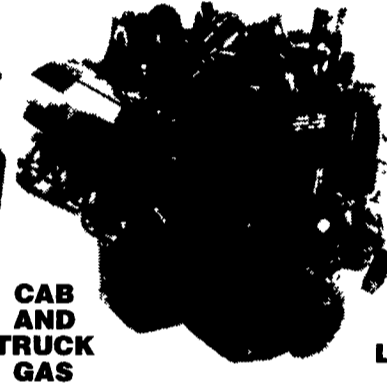
WE ARE YOUR GAS AND DIESEL ENGINE SUPPLIER
UP TO 24 MO., 200,000 MI. WARRANTY

5.9 CUMMINS B-SERIES



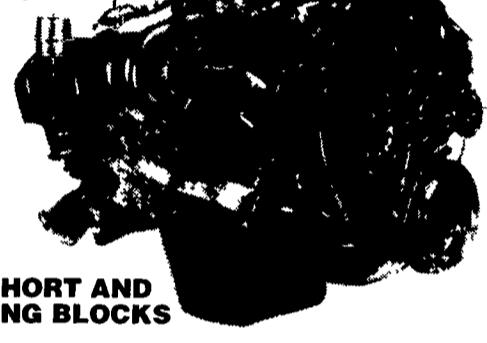
DROPP-IN DIESELS

6.9 DIESELS 7.3 POWER STROKE



CAB AND TRUCK GAS ENGINES AVAILABLE

GM 6.5 DROP IN



SHORT AND LONG BLOCKS

CALL FOR PRICES

CASH FOR USED DIESEL TRUCKS!

WE NEED 1/2 TON TO ONE TON:

- FORD DIESELS
- SUPERCABS
- CREW CABS
- DODGE CUMMINS
- 2WD OR 4X4
- DUALIES
- DUMPS
- UTILITY BODY
- FLAT BEDS
- CAB & CHASSIS
- SUPER DUTIES

LOW MILEAGE ONLY PLEASE

Before you sell or trade your diesel in somewhere else for LESS.

CALL US!

We Pay More for Used Diesel Trucks Than Anyone.
800-363-2767 TRY US!

or 610-678-3243
Ask for Smokey or Kay
KELLER BROS. RD 7, Box 405 Lebanon, PA 17042

BEASLEY FORD
www.beasleyford.com
1801 WHITEFORD ROAD, YORK
Mt. Zion Road Exit of Route 30
Phone (717) 755-2911

SALES:
Monday-Friday: 9AM-9PM
Saturday: 9AM-5PM

SERVICE:
Mon/Wed/Fri: 7:30AM-5PM
Tues/Thurs: 7:30AM-7PM

COMMERCIAL TRUCKS:
Mon-Friday: 7:30AM-7PM

Art may not represent actual sale vehicles

<p>2000 E450 PAR VAN 16' W/B 176, Color White, Engine 7.3L Diesel, Auto Trans., GVW 14,050</p>	<p>1999 FORD F350 CAB & CHASSIS 4x2, GVW 12,500, 141" Wheelbase, 7.3L Diesel</p>	<p>2000 FORD F350 S/W 4x2 Color White, Auto 5.4 V-8, XLT Trim, AC, AM/FM/Cass., GVW 9,900, 9' Utility</p>	<p>(2) 2000 F650 REG CAB Color White, Trim XLT, GVW 26,000, W/B 260", CA 186", Engine Cat Diesel/3126B, HP 190, Trans. 6 Speed Manual HP 210 Trans 7 Speed Manual</p>	<p>2000 F550 4x2 W/B 165", CA 84", Color White, Engine 7.3 Diesel, Trans. Auto 4-Speed, GVW 14,500</p>
<p>1999 FORD F250 SUPER CAB 4x4 Heavy Duty, V8, Auto, All Power Options, 22,000 Miles \$25,900</p>	<p>1998 FORD RANGER SUPER CAB 4x4 XLT, Trim, Flare Side, 5 Speed, 4L Eng, CD Stock #9578-1 \$16,550</p>	<p>1999 FORD E-350 CARGO VAN V8, Auto, Cruise & Tilt, Glass Side & Rear, 26,000 Miles</p>	<p>1999 FORD SUPER DUTY F250 4x4 XLT Trim, Auto, V-8, All Power Options, 28,400 Miles, Red, #9603-0 Reduced</p>	<p>(4) FORD EXPEDITION (2) 1999, 1998, 1997 (2) XLT & 2 Eddie Bauer</p>
<p>2001 FORD F150 CREW CAB XLT 3 In Stock, Choose From Either 4.6 V8 • 5.4 V8, 5.4L V-8, Trailer Tow, CD Changer, Cargo Cage, #017072-0</p>	<p>2001 FORD ECONOLINE HALFBACK Half Luxury, Half Utility, #016010-0</p>	<p>2001 FORD F250 REG. CAB 4x4 SUPER DUTY XLT Trim, 7.3 Power Stroke Diesel, Auto, Off-Road Pkg., 8,800 GVW, #017046-0</p>	<p>2000 FORD F350 SUPER CAB DUALY 4x4 158" Wheel Base, XLT Trim, 7.3 Power Stroke Diesel, 6-Speed, Power Take Off, #007394-0</p>	<p>2000 FORD F350 CREW CAB DUALY 172" Wheel Base Power Stroke Diesel, #007415-0</p>