

22 CUSTOM WORK

Custom Feed Bagging

6', 8', 9' Machines
Bags & Trench Covers Available
Pat Lemin
814-658-3874

23 HELP WANTED

AgJobsUSA -Nation's leading low-cost ag employment service offers hundreds of \$25-\$80,000+ jobs. Employees kept confidential; pay \$50. Employers \$250. Free brochure: 1-800-352-0303. www.agjobsusa.com

Tired of headaches but enjoy working w/cows, give me a call! Young farmer expanding looking of herdsman. Can bring cows, quality pay for quality work. Must be reliable & cleanly. Wife maybe involved. 814-793-3935, 3254

Irrigation Sales & Design

Established South Jersey company seeks individual to expand agricultural irrigation sales in PA and MD. Agricultural and irrigation expertise required. Permanent position with growth potential. Competitive salary, training and benefits. Send resume to:
**Lancaster Farming R-91
POB 609
Ephrata, PA 17522**

Large dairy farm seeking experienced crop employee. Full time employment. Wages based on experience. Paid vacation, fringe benefits. 330/682-5786.

Experienced farm equipment technician wanted. G&D Farm Equipment 717-664-2207

Lover house caretaker, full time position, references required, salary based on exp. and bonus on performance, NW Lancaster County 717-367-0430.

Wanted: Truck driver, steady mid-west run. Must have Class A CDL license. 717-859-6601

Truck Driver Needed

- F/T & P/T
 - CDL-A Required
 - Good Driving Record
 - Local Hauling
- 717-665-5454**

Lancaster County, Pa. Christian Family Run 150 Cow Dairy Farm OFFERING FULL TIME POSITION FOR AM MILKER

- With some herd feeding
- Experience in AI and herd health management helpful

Competitive wage plus benefits and housing provided
Non-smoker/drinking
Vacation days and every other weekend off
Fax Resumes #717-872-6432
Or Call 872-6922/872-7599

Milking 30 hours per week, evenings, good pay, flexible. Perry Co. Call Sara 717-789-4161

Varner's Family Farm growers of flowers, strawberries, peaches, apples, pumpkins, & Christmas trees, has full time position. Must work weekends & 7 days during busy season. Wages commensurate to experience. 610-489-8878

Herdsman 150 cow dairy. Experience desired. Housing + benefits. Huntingdon Co., PA. 814-632-8485

We are looking for someone to work construction with drivers license and willing to put in overtime. Benefits available. 717-442-4584.

Kennel Help-hard working individual, live on private estate, apt plus salary. 610-754-0023.

HELP WANTED

FOR CHRISTMAS TREE HARVEST & Selling Season

- F/T & P/T Available
 - Starting From Mid-Nov
 - Exc Wages
- Please Call **610-796-2653**

FULL TIME OPENING

Duties include truck driving and assistant livestock manager on a large beef/crop farm. CDL preferred but not required. Competitive wages. Great benefits.
717/872-4058 ~ 717/872-2065

Come work with us constructing farm ag buildings, horse barns and also setting heavy timbers. No experience necessary, some traveling may be required. Leave message at:

**WHITE HORSE CONSTRUCTION
717/442-8399**

Career Position for an Experienced Herdsman

With skills in management. Join a dedicated team who operate a 400 cow dairy with a focus on quality animal care and production. Good salary and benefits.

For details call Hunt Co., PA (814) 684-4475

Herdsman Wanted



Progressive, diversified farm in upstate NY searching for an experienced herdsman for a 600 sow farrowing operation. Person will be totally responsible for the hog enterprise on the farm. Modern facilities, with possibility for expansion to 1200 sows with right person. Salary will be competitive and based on experience. A production bonus will be included as part of the package. We offer health insurance, 401k plan, paid vacation and holidays. We invite you to contact us to discuss your interests and career plans. We are located in the heart of the Finger Lakes area which offers many recreational and cultural activities.
Phone Rick at 315-781-0482
E-mail Pedersfarm@aol.com
Pedersen Farms, Inc.

35 TRUCKS AND TRAILERS

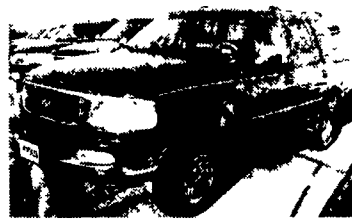
CHAPMAN
717-272-7671
Parts Dept. Open Daily 9-5
Sat 8-12 717-272-8188

FORD LINCOLN MERCURY NISSAN
CHAPMAN
AUTO GROUP

LEBANON
20th & Cumberland Sts.
Rt 422 West
Daily, 9-5 Sat



95 JEEP 4x4
AT, A/C, Low Miles, #P4541



97 FORD EXPEDITION XLT
4x4 Loaded, #PR572



97 NISSAN PATHFINDER LE
Leather, Moon Roof, Auto, Air, CD #P4538



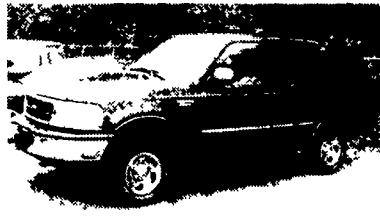
2000 NISSAN FRONTIER CREW CAB
4x4, V6, Auto, Loaded, Off Road Pkg., #P4537



98 FORD EXPEDITION XLT
Rear A/C, 3rd Seat, CD Changer, 17" Wheels, Running Boards, Perfect Family SUV



97 FORD F150 SUPER CAB
Lariat, 5.4L V8, AT, A/C, 2WD, Most Options, 25,000 Miles, Black, #P4474
\$20,998



97 FORD EXPEDITION XLT
4x4, Low Miles



2000 FORD RANGER XLT
XLT, Extend Cab, 4x4, Loaded



2000 FORD EXPLORER XLT
4x4, One Owner

Credit Problems? Call 1-888-CARS-4-YOU
TRUCKS - UTILITY VEHICLES - TRUCKS

23 HELP WANTED



Full Time Opportunity

to work on a growing dairy farm in Perry Co., PA. Must have experience and general knowledge in the care and milking of dairy cattle. Competitive wages and benefits.

717/536-3591

HELP WANTED SERVICE MANAGER

Wholesale farm equipment distributor needs an individual to process warranty claims and answer service related telephone calls from the dealer network. Position requires mechanical knowledge and a pleasant telephone personality. Benefits include health insurance, paid vacations, and paid holidays. Apply in person at

HAMILTON EQUIPMENT, INC.
567 S Reading Road (Rt 272), Ephrata, PA 17522-0478
Telephone: 1-717-733-7951

WANTED

Class "A" C.D.L. Truck Drivers for Regional and Midwest Refrigerated Transport. All handling paid. Top pay and excellent benefits. Assigned late model conventional tractors and all airride fleet. Flexible home time.

CALL
HENDRICKS TRANSPORT, LLC
1-800-400-3004

Help Wanted

Class A Truck Driver
General Production
Order Pickers
Meat Cutters

All positions 1st shift
No Sundays

55 Lower Hillside Road
Stevens, PA
(717) 336-2804



Growing Agri Equipment and Construction Company Needs:

- Field Supervisor
- Parts Counter Salesperson
- Subcontract Framing, Concrete, Block and Siding Crews

Call
A&E Enterprises, Inc.
(717) 274-3488 Ext. 240