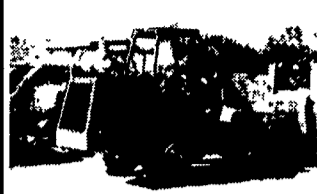
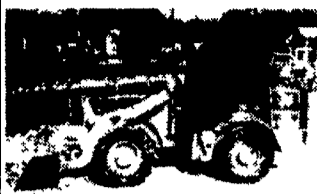


J.L. HOLLINGER & SONS

Construction Equipment Sales
Manheim, PA 17545
717-664-2444
717-664-2637 after 6 p.m.



'94 Prime Mover LD50
 ROPS, 4x4, Like New
\$14,000



'95 JCB 409
 EROPS, GP Bucket
 w/Coupler, Low Hrs.
\$24,000



'93 Case 480F
 EROPS, 2WD, Low Hrs.,
 Rental Return
\$14,000



'85 Lull 644
Highlander II, 6,000 Lbs.
 @ 34', New Dsl. Engine
\$20,000



Case 580B
 2WD, ROPS, Std. Hoe
\$7,700



'88 Case 580K
 2WD, EROPS w/Ext. Hoe
\$15,000



'90 Volvo L-70
 EROPS, GP Bucket,
 3rd Valve
\$20,000



'96 Case 580 Super L
 4x4 EROPS, Std. Hoe,
 V. Good
\$29,500



'86 Case 450C
 6-Way Blade, V. Good
\$15,000



'85 Cat D3B LT
 Custom 75 6-Way Blade
 w/Winch, V Good
\$23,500



'86 Case 580 Super E
 4x4, EROPS, 4 in 1
 Bucket, Ext. Hoe,
 V. Good, Needs Cab Work
\$13,750 as is



'80 Cat D3
Crawler Dozer
 ROPS, 6-Way Blade,
 Low Hrs., 1 Owner
\$12,750



'83 Fiat Allis FR10
 Cab, 4x4, GP Bucket,
 2-1/2 Yd. Bucket
\$13,000



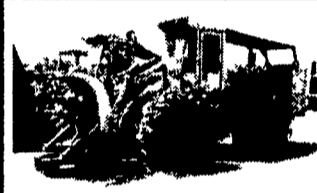
'94 Cat 446B
 TLB, Cab, 4x4, Ext. Hoe
\$36,000



Cat 941B
Crawler/Loader
 4 in 1 Bucket, Cab
\$9,500



'87 Cat D25C
Haul Truck
 Good Cond., 25 Ton
\$47,000



'89 JD 643 Feller
Buncher w/Shear Head,
 Rebuilt Engin, Tires @
 90% w/Chains, V. Good
\$35,000



'90 Cat D7H-II
 ROPS, S/T Blade w/Cat,
 Model 57 Winch, V. Good
\$69,500



'88 Cat 963 LGP
 EROPS, GP Bucket,
 V.G. Cond.
\$56,000



'88 Cat IT 28B
 EROPS, w/Air Coupler,
 GP Bucket, V. Good
\$36,000



Centreville 10 Ton
Tag-a-Long Trl.
 Air Brakes
\$3,200



'96 JD 648G
 Cab, Air, Winch &
 Grapple, New Ruber
\$60,000



'89 JD 555G
 EROPS, GP bucket,
 w/Backhoe Att.
\$29,500



'90 Gehl GX10
 Excavator w/Blade,
 Rubber Tracks
\$6,500



'84 JD 655
Crawler Loader
 ROPS, 4 in 1 Bucket,
 Fair Cond.
\$16,500



'88 Cat 953 LGP
 EROPS, GP bucket,
 V. Good
\$39,500



'94 Cat 325L
 5,000 Hrs., Med Stick,
 Air, V. Good
\$69,500



'96 JD 310D
 Turbo Cab, 4x4, Ext. Hoe,
 4 in 1 Bucket
\$33,500



'96 JD 544G
 Cab w/Air, 3rd Valve,
 GP Bucket
\$65,000



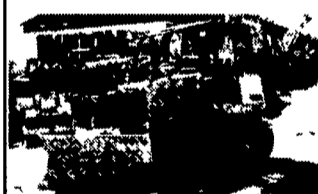
'87 Case 580 Super E
 4WD, EROPS, Ext. Hoe
\$16,750



Beck Tandem Axle
Skidloader Trl.
\$2,100



'87 JD 555B
 ROPS, 4 in Bucket,
 V. Good
\$16,500



'95 Case 650G
 2800 Hrs., ROPS, 6-Way
 Blade, V. Good
\$35,000



'83 Case 850C
 ROPS, 6-Way Blade
 w/Ripper
\$16,500



'86 Cat 953 LGP
 OROPS, GP Bucket,
 Very Clean
\$34,500



'94 Case 1840
 Dsl., Aux. Hyd. Coupler,
 Low Hrs.
\$10,900



'96 Case 580 Super L
 4x4, Ext. Hoe, 2500 Hrs.,
 V. Good
\$29,000



'86 Cat 980C
 EROPS, GP Bucket,
 B.O.C.E., L5 Rubber
 @ 60%
\$60,000



'85 Ford 5610
 w/Tiger Interstate
 Mowers Dsl.
\$9,500



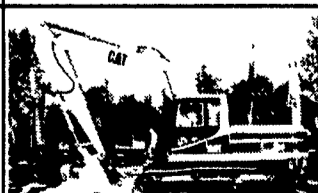
'98 Takeuchi TB020
 Rubber Tracks, Front
 Blade, V. Good Cond
\$10,750



'88 Liebherr 631B
 EROPS, GP Bucket, 6000
 Hrs., 80% Undercarriage
\$23,500



'95 JD 755B
 ROPS, Ripper, New Engine
\$37,500



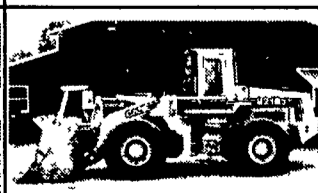
'94 Cat 320L
 Long Stick, 42" Bucket
\$45,000



'80 Cat D6D
 ROPS, S/T Blade,
 V. Good Cond.
\$36,000



'94 Case 550E
 ROPS, 6-Way Blade,
 Rental Return, V. Good,
 Long Track
\$28,000



'94 Case 821B
 EROPS, GP Bucket,
 3rd Valve, V. Good
\$59,000