

## Public Auction Register

Closing Date Monday 5:00 P.M.

of each week's publication

Internet Sale Register will be updated

every Sat. at 2:23 P.M.

### ATTENTION Auctioneers

All sales register info needs complete address, street, town, county & state.

SAT NOV 11 - 9AM Antique & household auction from the estates of Mr. & Mrs. Ken Richards Rehersburg Fire Hall Rehersburg Pa Richard A Kramer AU-003135 L, Rick Kramer AA-002278 L

SAT NOV 11 9AM Tools woodwork equip sm new

manure spreader air compressor lumber rest equip dishes, utensils, milk bottles 576 Spring Valley Rd, Quarryville Pa 3 1/2 miles S of Quarryville off Rt 222 turn right at Village of Mechanic Grove then 1 mile on right By Ronald Bard Snyder's Auction Service AU-003489-L

SAT NOV 11 - 10AM Antiques, furniture, collectibles, guns, ar At 988 Fallowfield Rd, Atglen Pa Robert A & W Jean Powell, owner John J. McGrellis III, auct SAT NOV 11 - 10AM Real estate, timber, sawmill loaders, trailers & trucks Golden Hill Md Jack Brodie Spicer Inc Pete Richardson Auct Sales

SAT NOV 11 - 1AM Train auction Thorofare Fire Hall Thorofare NJ Col Lee M Fox auct

SAT NOV 11 10AM toys & automobilia at the Ridge Fire Co along Rt 23 between Rt 100 & Phoenixville, Pa Ted Maurer auct AU-000593 L

SAT NOV 11 - 11AM Penn Yan (Yates Co) NY Stephen Castner Farm Machinery Auction Pir rung Aucts

SAT NOV 11 11AM Real Estate Auction at 6341 Jackson Drive E Petersburg, Pa Leonard Pomraning owner Susquehanna Auction Team #AU0022762L

## ON SITE PROCTER & GAMBLE SURPLUS AUCTION

CONDUCTED BY RIVENBURG'S AUCTION

Located on Route 87 Mehoopany PA

SAT., NOV. 11, 2000 • 9 AM

with Possible Continuation Next Day

SUN., NOV. 12, 2000 • 11 AM

Directions: take Route 6 to Route 87 @ 2 miles on right.

OVER 6300 ITEMS

**Partial Listing:** (11) air arcs, (5) air compressors (Smith, some electric), (2) bender attachments, Pro Term Beveling tool, Tri Tool pipe bender model 203B, (28) burning outfits (oxy-acc), (15) acetylene regulators, (13) oxygen regulators, beam trolleys, (2) 8 ton Mercury beam trolleys, Gardner Denver model 548 drill, (2) pneumatic scaler, come alongs, cham falls, radios, communication kit, ETCON cable length meter model WL140, (2) cannons, A flame push cart, hydraulic elevating cart, Sprague/Henwood core drill model MDS775, B&D core drill motor model 748, B&D core drill, WEKA core drill model DK 1203, (2) 6 1/4 inch circular saws, (2) 8 1/4" in worm Skill circular saw model HD5860, assortment of drills & drill motors, (7) drill presses, (1) Dynamometer, (1) Kalamazoo saw model 8CD, Greenlee cable bender model 1800, Greenlee clock bender model 555, (1) 3/4" EMT bender, extension cords, (2) 60-100 Amp-440 volt adapters, (1) cherry picker, (1) story pole, (3) extinguisher fill stations, (1) electric motor mixer, (1) gas Stone motor mixer, assortment of gang boxes (some fire proof), (3) concrete saws, (1) AEG 5" dry saw model WS-1200, (9) Field desks, fire extinguishers, (2) generators, (1) 3 jaw gear puller, (1) pipe roll Gruver, (1) gas chain saw, Hilti rotary hammers model TE-72 & TE 92, (1) Hilti shot gun model DX36M, (8) Hilti rotary hammers model TE-5, (6) Hilti rotary hammers model TE-74, (10) other rotary hammers, assortments of hundreds of hand tools, (2) shot guns, (5) Hilti adapters, hydraulic jacks, (2) hydrostatic pumps, (8) hydraulic rams, (2) 10 ton hydraulic ram with 1 3/4" lift, (3) 25 ton hydraulic ram with 6 1/4 stroke, (3) 25 ton hydraulic ram with 4 stroke, (2) 25 ton hydraulic ram with 1 stroke, (1) Ingersol Rand 3/4" impact air gun model 261, (2) rebar/bender cutters, (1) threaded rod cutter, (20) Porta Heaters, (21) knock out punch sets, (2) Sumner Roust A Bout model Z-250, duct lift, (10) 20 foot Economy Lift Hi Jacker model HJ 15-M, (3) lift duct extensions, Step ladders, (2) Ericson low voltage lights, Laser Level, Levelite pocket Laser Level, (3) trash pumps, (2) electric 440 sump pumps, Root 7 hp groud pump, (3) quartz lights, load tester, (1) torpedo level, (1) Hougan mag drill model 10904, (6) mag drills, (2) Jancey Mag base slugger drill model JM 101, (3) Biddle meggers model 212159, (2) phase indicators, (5) wire marker printers, (2) MSA oxygen indicators, mini pencil grinder, Morgan 4" metal roller, mag screwdriver, sling psychrometer, (2) mouse vacuums, mouse vacuum reel, noise bag, (1) grease pump, (1) power pack, soil pipe assy. Tool, (38) port-a-bands, (1) heavy duty band saw, 911) Port-a-band deep throat, (1) port-a band saw, (2) story poles, (5) pencil grinders, (1) P & G made hydraulic punch, plate joiner, Bosch planner, (3) porta powers, portapower pump, 10,000 psi portapower pump, 25 ton portapower pump, pipe stand & rollers, (8) Pony 700 with Dirs 1/2" 2", (73) plum bobs, pipe wrenches, quartz lights, (2) wire jack sets, (7) skate rollers, (8) skates, (2) Miller Life lines model M55, retractable lanyards, rod ovens, (5) MSA Respirators, (15) 10 minute escape respirators, scaffolding squares, skate handles, safety cones, level starret, mash & sledge hammers, pumps, socket sets, (1) Rigid Pipe threader, model 300, (1) Rigid pipe threader model 535, (2) Rigid 2" Universal head models 161 & 141, (2) Stow tampers model VRC60HD, Wacker Tamper model GVR1517, Wisconsin tamper model W1280, tube benders & cutters, soil pipe cutter, work benches, (8) flaring tools, (1) Parker hydraulic flaring tool, (4) tie wrap gun, (1) tensioning tool, (52) tap handles, (2) trowel machines, transfer punch sets, torque wrenches tig torches & regulators, (7) Argon/Co2 flowmeter, (2) Modern plate gobblers model SN41, (2) Minuteman HEPA vacuums, concrete vibrator, Thermalcore Vulcanized iron, wire rope checkers, hundreds of nylon slings, Lift All chain sling

**Vehicles:** 1989 Chrysler Voyager mini van, 1988 Chevy C-70 flatbed truck, 1987 Ford F-350 stake body truck, 1989 Ford F-350 stake body truck, 1987 F-800 Ford dump truck, 1986 F-150 pick up truck, 1991 Chevy S-10 pick up truck, 1987 Ford Ranger pickup truck, 1992 Ford F-150 pick up truck.

**Machinery:** gas & diesel fork lifts, (3) fork lifting attachments, Case 580 back hoe

**Welders:** (2) Syncrowave 300 electric welders, (25) Ideal Arc 250 electric welders, Lincoln gas welder AC225DC, (2) Lincoln Diesel welder model WP 250 D10, (2) trailers, Linde Plasmarc model PCM101, Thermal Arc Plasmarc model 5XR, 8 pac welder, 8 pac Aftek welder model 1066, 8 pac Miller Welder model MARK VIII 2, AGM IND stud welder model 600SS, (2) Lincoln diesel 250 amps welder with highway run gear, Delfa model 300 welder, Enfield Enfusion welder, plus helmets, curtains, screens, wedges.

**Other:** Toilet trailer, Tool Trailer, Construction Trailer

**Terms:** Cash, certified check, or check known by auction, visa/mc/discover. Lic #AU2808-L 10% Buyers Premium.

**Pick up days for merchandise:** Monday November 13  
Tuesday November 14 9AM to 5 PM

Phone (570) 942-6622 or (570) 945-9493

Website: [www.rivenburgsauction.com](http://www.rivenburgsauction.com)

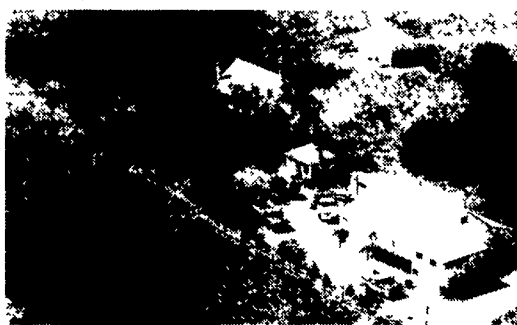
## 5.3 ACRE COUNTRY PROPERTY PENRYN AREA

### J.D. MOWER - PERSONAL PROPERTY PUBLIC AUCTION

SAT., NOVEMBER 25, 2000

Auction Time 8:00 A.M. Real Estate 11:00 A.M.

**DIRECTIONS:** From Litz Route 501 North, left onto Newport Road, go 4 miles to Penryn, turn right onto Penryn Rd then left onto Picnic Grove Road, Penn Township, Lancaster Co., PA



1446 Picnic Grove Road, Manheim, PA (Penryn)

2 1/2 STORY LOG HOUSE

with kitchen with built-in wooden cabinets, pantry, electric range, refrigerator, dining room with built-in china cabinets, large living room with Fisher wood & coal stove, 1/2 bath downstairs **UPSTAIRS:** has 2 bedrooms, could easily be converted back to 3 bedrooms, large new addition bathroom with new vinyl tilt-in windows, full attic, slate roof, aluminum siding, storm windows, partial basement with oil hot water heat, well water, septic system

- \* Pump House
- \* Approx 4 Acres Pasture
- \* 6 Run Dog Kennel
- \* Private Setting

**LARGE 2 STORY BARN:** approx 32'x40' contains garage area, horse stable, hay loft, corn crib plus a fore-bay A barn with lots of possibilities

**NOTE:** Don't miss this quaint country property located along a private road. Many possibilities and plenty of room to expand Zoned R-1 New addition to house not on picture

**OPEN HOUSE:** Saturday, November 4 1 00pm to 3 00pm

Saturday, November 11 1 00pm to 3 00pm

or by appointment for a viewing to see or help to obtain bank financing call Aaron E Martin at 733-3511

**TERMS:** 10% down payment at auction, balance at final settlement on or before January 10, 2001.

**ATTORNEY:** Michael P Kane 299-5251

Auction by

**SCOTT J. & KATHY J. YERGER**

(717) 665-7259



410 West Church Rd  
Ephrata, PA 17522  
(717) 733-3511

## PUBLIC AUCTION

FARM MACHINERY

TRACTORS

RISSLER TMR MIXER

CORN SILAGE

PERSONAL PROPERTY

20x48 GREENHOUSE

TUES., NOV. 14, 2000

Auction Time 9 AM

Location: PO Box 97, Goodville, PA (along Rt 23 in Goodville) From Blue Ball, Rt 23 East, approx 2 mi to farm on left East Earl Twp., Lanc Co

Tractors & Farm Equipment

J.D. 750 Compact Diesel Trac 4x4 - 240 Hrs.

1951 J.D. B 2 Cyl. w/Cult. & 3 Pt.

Kuhn 3-16" Rollover Auto. Reset Plow - like new; 3 pt 7-Tooth Chisel Plow w/depth wheels, Bush Hog 5-Tooth 3 Pt Hi Rise Chisel Plow, Oliver #252 10' Transport Disc, Ford 11' Field Cult w/Buster Bar, JD 3 Sec Harrow, JD FB Grain Drill, (2) 10' Cultpackers, N H 795 Manure Spreader, N H 352 Grinder Mixer, J D 3940 Chopper w/J D 2RN Corn Hd & 5 1/2' Hay Head, Gehl 940 Forage Wagon, N H Forge Wagon, A C Silage Blower, N H 270 Baler, IH 435 Baler w/Thrower - needs work, N H #55 Hay Rake, N H #31 Flail Chopper, Zimm 30' Bale Elevator w/Corn Chute, N I 323 1R Cornpicker, Smoker & Kilbros Bin Wagons, Hardy 3 pt 150 Gal Field Sprayer w/33' Boom, Mayrath 20' Grain Auger 6", Cardinal Chor Boy 18 Elevator, Noble 4 Row & 2 Row Danish Tine Cultivators, J D 400 Rotary Hoe, 2 Row Rotary Hoe, 8' Flexline Harrow, 50 Gal Automatic 3 pt Mist Blower, 1 R PTO Potato Digger, 16' Produce Display Wagon w/Roof; Stauffer 2R Tob Planter, Pequea 12' Utility Trailer w/Title, Rissler #105 TMR Mixer; Rissler 60" Taper Board Feeder, Farm Trailer, 1 1/2T Army Trailer, 8 T Flat Wagon, 1-Hole Corn Sheller, 20x48 Greenhouse w/Fixtures; 500 Gal. Propane Tank; Greenhouse Supplies, 65KW LP Gas Generator on skid, 150 Gal Kero Tank w/Pump, 300 Gal Diesel Fuel Tank on Stand, Assorted Farm Gates, 4 Hives of Bees & Bee Supplies; Corn Silage Out Of 12x50 Stave Silo; Corn Silage Pile; Hay & Straw & Barley.

**SHOP TOOLS:** Atlas Turring Lathe w/Tools, 12 Ton Press, Belsaw & Foley Circular Saw Sharpener, 5 HP Air Comp, Drill Press, Bolt & Nut Bin, Batt. Charger, 55 Gal Drain Oil Barrel w/Pump, Shindawa Chain Saws, Main Line Rototiller, Beachly Trac Cultivator, Sears & Wheelhorse Riders, Dixon #427 Zero Turn w/14 HP Kawasaki Eng Toro Walk Behind Mowers, 36" Roller, 25 Gal Tree Sprayer on wheels, Char Broil & Weber Grills, Wheelbarrows, Stepladders, Ext Ladders, Lumber & Plywood, Wooden Greenhouse Arches - 13 pcs - 14', (6) 24' Wooden Trusses, Steel Pipe, Storm Windows, Reddy Heater, Sm Hand Tools

**HOUSEHOLD ITEMS:** Hotpoint 18 cu ft Refridge, Caloric 30" White Gas Range, Sub Zero Refridge, Gilbralter Coal Stove w/Glass Door, Harman Fireplace Insert, New 52 Gal Hot Water Heater, Lg Braided Rug, Misc Rockers & Chairs, Saus Stuffer, Butter Churn, Picnic Table, China Hutch, Quilt Frames, Settee

**NOTE:** Reason for auction - Owners have bought farm out of state Auction to begin w/wagon items & household goods followed by farm machinery Terms are cash or PA check Food stand

Terms by

**ENOS H. & VERA Z. MARTIN**

717-445-7374

Auction Conducted By  
Randal V Kline, Lloyd Kreider,  
Roy Good, Jr., Auctioneers  
Lic. #2116, #499, #513  
717-445-4309



## TWO PUBLIC AUCTIONS TOY & MODEL AUTOS LIONEL OF ALL KINDS 10 A.M. SATURDAY, NOVEMBER 4, 2000 RIDGE FIRE COMPANY

Along Rt. 23, Between Phoenixville, PA and Rt. 100  
Exhibition: 7-9 PM Friday & 8-10 AM Saturday

Selling in the Pavilion, an exceptional Lionel selection spanning Standard & "O" Gauge production from 1920 to 1970; especially nice, clean trains from the Post War Era 1946 to 1970. Auction also includes surprise appearances from other manufacturers.

On the toy side, in the Blue Room, "like new" used autos: 1:24 scale from Franklin & Danbury Mints - 100 pieces in boxes with paperwork. All kinds of other cars & trucks, too - die cast Matchbox, Dinky, Tootsie, Ertl, Hess & Marx.

615 lots of trains and 450 lots of toys. A 10% buyer's premium will be applied.



**TED MAURER (AU-000593-L)**

Successful Auction Management

1003 Brookwood Drive

Pottstown, PA 19464

Phone: 610-323-1573 or 610-367-5024

Also Fridays & Saturdays at 610-495-5504

Visit our website at [www.maurerail.com](http://www.maurerail.com)