

Indiana-Ohio Direct Hogs
Springfield, IL
October 26, 2000

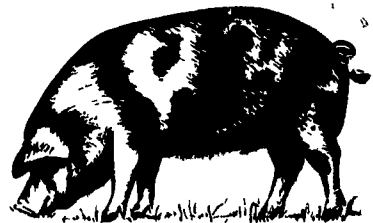
Report Supplied By USDA
Indiana-Ohio Direct Hogs Close
Negotiated sales: 12500 Wk ago: 10400 Yr Ago: 11500 Estimated Daily movement: 30000 Wk ago: 32200 Yr Ago: 29600 Yesterdays actual movement: 30000 Week to date total movement: 124200 Wk ago: 131400 Yr Ago: 129100 Trend: On a carcass basis barrows and gilts .50 to .75 lower.

Demand light to moderate for a moderate run.

MAJORITY OF TODAY'S SALES (185 lb carcass) Percent Country buying points Plant Delivered Lean carcass sales live 74% yld carcass sales live @75% yld 51-52.9(1)47.00 -51.61 34.78 -38.19 47.50 -53.16 35.63 -39.87 mostly 49.50 -51.61 35.50 -37.50 mean 51.24 mean 38.43 - BASE MARKET 49-51 PCT LEAN CARCASS BASIS PLANT DELIVERED(2) 47.5 - 51 WTD AVGnot available Calculated Percent Country buying points Plant Delivered Lean carcass sales live @74% yld carcass sales live @75% yld

55-56.9 50.90 -54.50 37.66 - 40.33 53.78 - 55.16 40.33 - 41.37 53-54.9 49.72 - 53.50 36.79 - 39.59 51.50 - 54.16 38.63 - 40.62 51-52.9(1)47.00 -51.61 34.78 - 38.19 47.50 - 53.16 35.63 - 39.87 49-50.9 45.00 -50.50 33.30 - 37.37 45.50 - 51.00 34.13 - 38.25 47-48.9 43.00 -49.74 31.82 - 36.81 43.50 - 50.24 32.63 - 37.68

Sows: mostly 1.00 lower. US 1-3 300-400 lbs 26.00-29.00 400-500 lbs 29.00-33.00 500-600 lbs 29.00-35.00, mostly 31.00-33.00 few over 600 lbs 32.00-36.00, few 31.00 Boars: under 300 lbs 20.00-26.00; over 300 lbs 10.00-17.00 (1) majority of area hog population average percent lean (2) Based on individual packer buying programs. No premiums or discounts included.



New Holland Feeder Pig Auction
NEW HOLLAND, PA
October 25, 2000

Report Supplied By USDA
FEEDER PIGS WEDNESDAY 348 LAST WEEK 787 LAST YEAR 491

TREND: Compared to last week, feeder pigs sold 8.00-15.00 lower. Trading was moderate for feeders and active for slaughter pigs. This week's offerings were light and slaughter hogs continue to drop in western markets. Around 34 percent of supply returned to farm. All pigs were weighed and graded on arrival and sold by the hundred weight.

HEAD WEIGHT PRICE US 1-2 2 pkg 15 lbs 80.00 69 30-50 lbs 92.00-95.00 12 pkg 47 lbs 60.00 US 2 11 pkg 30 67.00 26 30-70 lbs 30.00-38.00

SLAUGHTER 81 20-25 lbs 140.00-152.00 17 70.00-85.00 50 30-35 lbs 92.00-102.00 2 pkg 67 lbs 38.00 As Is 36 20-25 lbs 105.00-134.00 38 30-105 lbs 35.00-40.00 48 30-90 lbs 25.00-55.00

ALL PIGS CONSIGNED TO WEDNESDAY FEEDER PIG SALE MUST ORIGINATE FROM A QUALIFIED NEGATIVE OR MONITORED HERD.

New Holland Hog Auction
NEW HOLLAND, PA
October 23, 2000

Report Supplied By USDA
HOG RECEIPTS TODAY 863 LAST MONDAY 954 LAST YEAR 1104.

BARROWS AND GILTS: Compared to last week, prices were 2.00-3.00 lower. PERCENT LEAN WEIGHT PRICE 49-54 215-280 lbs 36.35-38.25, mostly 36.35-37.00 Few up to 41.50

45-50 215-285 lbs 34.35-36.85 40-45 285-325 lbs 32.00-35.00 330-415 lbs 25.00-29.10, few to 31.25

Sows: Prices were mostly steady. US 1-3 300-400 lbs 32.00-35.00 400-500 lbs 28.00-32.00 500-650 lbs 35.00-38.00 Boars: 300-700 lbs 17.00-18.00



Wolgemuth Hay
Leola, Pa.

Report Supplied By Auction
Wednesday, Oct. 25, 2000
Hay—Straw—Grain

25 LOTS TOTAL.
ALFALFA: 75.00, 87.00, 112.00.
MIXED HAY: 80.00-162.00.
TIMOTHY: 115.00-140.00.
GRASS: 75.00-150.00.
STRAW: 127.00 AND 1450.00.
CORN: 52.00.
RYE: 1.25.
FIREWOOD: 35.00 LOAD.

Diffenbach Auction Center
New Holland, Pa.

Report Supplied By Auction
Monday, Oct. 23, 2000

TOTAL LOADS: 80.
ALFALFA: 50.00-205.00.
MIXED HAY: 45.00-210.00.
TIMOTHY: 90.00-165.00.
ORCHARDGRASS: 70.00-150.00.
STRAW: 60.00-130.00.
EAR CORN: 50.00-55.00.
OATS: 1.45 BU.
FIREWOOD: 57.00-75.00 LOAD.

Kutztown Produce Hay Auction
Fleetwood, Pa.

Report Supplied By Auction
Saturday, Oct. 21, 2000
Hay—Straw—Grain

22 LOADS.
ALFALFA HAY: 96.00-154.00.
GRASS HAY: 75.00-160.00.
TIMOTHY HAY: 76.00.
MIXED HAY: 60.00-152.00.
OAT STRAW: 70.00-78.00.
HAY: 13.00 LARGE ROUND BALE.
FIREWOOD: 85.00-100.00.
RYE SEED: 3.00 BU.
SALE EVERY SAT., 9 A.M.

Vintage Hay
Vintage, Pa.

Report Supplied by Auction
Thursday, Oct. 26, 2000
Hay—Straw—Grain

ALFALFA: 100.00.
GRASS: 50.00-80.00.
STRAW: 97.00.

Weaverland Hay
New Holland, Pa.

Report Supplied By Auction
Thursday, Oct. 26, 2000
Hay—Straw—Grain

TOTAL LOADS: 35.
ALFALFA: 70.00-95.00.
TIMOTHY HAY: 100.00-142.00.
ORCHARDGRASS: 100.00-160.00.
MIXED HAY: 55.00-160.00.
GRASS: 50.00-110.00.
STRAW: 80.00-132.00.
EAR CORN: 53.00.
FIREWOOD: 47.00-62.00.
RYE SEED: 2.60-2.70 BU.
ROUND BALEAGE: 16.00 BALE.

Green Dragon Hay
Ephrata, Pa.

Report Supplied By Auction
Friday, Oct. 20, 2000
Hay—Straw—Grain

40 LOTS TOTAL.
MIXED HAY: 12 LOTS, 85.00-190.00.
ALFALFA: 90.00, 105.00, 192.00.
TIMOTHY: 8 LOTS, 69.00-152.00.
STRAW: 7 LOTS, 50.00-125.00.
EAR CORN: 112.00.
ORCHARDGRASS: 4 LOTS, 70.00-145.00.
FIREWOOD: 65.00 AND 148.00 LOAD.

Westminster Hay
Westminster, Maryland

Report Supplied By Auction
Tuesday, Oct. 24, 2000
Hay—Straw—Grain

150 LOTS.
ALFALFA: 3.30-4.90 BALE, 18.00-22.00 LARGE ROUND.
MIXED HAY: 1.70-3.60 BALE.
GRASS: 1.00-3.00 BALE, 10.00-15.00 LARGE ROUND.
STRAW: 1.40-2.60 BALE.
MULCH: .50-1.20 BALE.
EAR CORN: 3.50 BAG.
SHELLED CORN: 5.50 BAG.
GROUND EAR CORN: 4.25-5.00 BAG.
FIREWOOD: 50.00-142.00 CORD.

Regional Hay
October 23, 2000

HAY & STRAW MARKET FOR EASTERN PA — (ALL HAY GOOD GRADE & BETTER PRICES PAID BY DEALER AT THE FARM & PER TON) HAY STEADY TO STRONG, STRAW STEADY. ALFALFA 90.00-130.00, FEW REPORTED 150; MIXED HAY 80.00-125.00, FEW REPORTED 140; TIMOTHY 80.00-110.00, FEW REPORTED 140; STRAW 60.00-85.00, MULCH 25.00-40.00.

SUMMARY OF LANCASTER CO. HAY AUCTIONS — FOR WEEK ENDS 10/20/00. PRICES PER TON: 81 LOADS HAY, 19 STRAW & 5 EAR CORN. ALFALFA 110.00-175.00, MIXED HAY 105.00-167.00, TIMOTHY 100.00-175.00, STRAW 90.00-125.00, EAR CORN 74.00-105.00.

SUMMARY OF CENTRAL PA HAY AUCTIONS — FOR WEEK ENDS 10/20/00 PRICES PER TON: 82 LOADS HAY, 13 STRAW & 20 EAR CORN. ALFALFA 60.00-130.00, MIXED HAY 70.00-125.00, TIMOTHY 70.00-110.00, STRAW 70.00-105.00, EAR CORN 60.00-90.00.

Weaverland Hay
New Holland, Pa.

Report Supplied By Auction
Thursday, Oct. 26, 2000
Hay—Straw—Grain

TOTAL LOADS: 35.
ALFALFA: 70.00-95.00.
TIMOTHY HAY: 100.00-142.00.
ORCHARDGRASS: 100.00-160.00.
MIXED HAY: 55.00-160.00.
GRASS: 50.00-110.00.
STRAW: 80.00-132.00.
EAR CORN: 53.00.
FIREWOOD: 47.00-62.00.
RYE SEED: 2.60-2.70 BU.
ROUND BALEAGE: 16.00 BALE.

Morrison's Cove Livestock Hay
Martinsburg, Pa.

Report Supplied By Auction
Monday, Oct. 23, 2000
Hay—Straw—Grain

GRASS: 65.00-95.00.
TIMOTHY: 70.00.
MIXED HAY: 32.50-65.00.
ROUND BALES: 40.00-47.50.
STRAW: 60.00.
WOOD: 30.00 LOAD.
AUCTION EVERY MON., 12:30 P.M.

WANTED COWS

Breeding School will be buying a large order of open cows on

Tues., Oct. 31

Carlisle Livestock Market, Inc.
Exit 12 off I-61 turn South
(717) 249-4511
or Evenings
Jim 248-2359

HAY, STRAW & GRAIN SALE

Every Thursday at 12 NOON

Vintage Sales Stables, Inc.

(Rt. 30, Paradise, PA)
For more information
(717) 442-4181
(717) 768-8204

See Lancaster Farming CowCam

Visit our Website at www.lancasterfarming.com

PENNFIELD In Customer Satisfaction

- Personalized Feeding Rations
- Guaranteed Feed Quality
- Trained Feed Consultants
- No Charge Forage Testing
- Super Flake Corn & Barley
- Grain Bank Program
- 7 Days a Week, 24 Hours A Day Orders and Delivery

PENNFIELD DAIRY FEEDS (ALL NATURAL)

#75041 - 16% FLAKE \$154.75

#75043 - 20% FLAKE \$176.64

#75071 - 32% PELLET \$240.00

#75072 - 38% PELLET \$262.46

Prices are week of 10/30/00 and include 8 ton volume, mid week/early order, 4% cash discount paid 10 days. Prices are delivered to the farm within 75 miles from Mt. Joy, PA.

Call Us Anytime pennfield feeds 1-800-995-0333 www.pennfield.com

VINTAGE SALES STABLES, INC.

NEW MONDAY SALES

AT 10:30 AM
SELLING HEIFERS, BULLS, STEERS, FEEDER & BUTCHER COWS

L. ROBERT FRAME, SR., PRESIDENT
BUS (717) 442-4181 BUS (717) 768-8204
HOME (610) 458-8518

FIELD REPS

KENNETH E. HERSHEY (717) 442-4874
LEON HOOVER (717) 354-5835
BUTCH BROWN (717) 626-5394

TUESDAY SALES

10:30 A.M.
SLAUGHTER CATTLE AUCTION
STEERS, BULLS, HEIFERS, COWS, FEEDER CATTLE

At Approx. 1 PM
Selling Feeders

6:00 P.M.
CALVES, SHEEP, GOATS
*GET CALVES IN EARLY! OUR STATE GRADER STARTS AT 10:30 A.M.

TRUCKING SERVICE AVAIL.
LOCAL & LONG DISTANCE
(RT. 30, 10 MILES EAST OF LANCASTER IN PARADISE, PA)



FLEA MARKET OCT. 28 & 29



COLUMNS

Now Is The Time..... A10
On Being A Farm WifeB5
Family Living Focus.....B7
Ida's Notebook.....B12

DEPARTMENTS

Editorial A10
Farm Calendar A10
Futures A16
Mailbox MarketsB18
Sale ReportsB21
Public Auction RegisterB31
Classified Ads C5
Business News..... D2

HOME & YOUTH

Homestead Notes B2
Home On The RangeB6
Cook's QuestionB8
Kid's KornerB10
You Ask, You AnswerB11
4-H Happenings.....B12

DAIRY

Dairy Stakeholders..... A24
Bucks Holstein A41
Crawford DHIA C2

FEATURES

Granger Of The Year A1
Forestry Conference A1
Help For Dairy Farmers A1
Master Gardeners A25
Poultry Association A29
Ennis Family Farm..... A32
Champs For Hostetter A38
Braumvieh Traits A40
Freed's 65thB4
Top Seamstresses.....B6
State Strangers.....B9
Lancaster 4-H AwardsB14
Somerset 4-H'ersB15
KILE BreedingB16
KILE HorsesB17
NY State Fair C4
KILE Beef D3
Big E Sheep D5
Middletown Grange D6