



Trailer Financing Available or

Truck & Trailer Parts & Accessories
Distributor

HOURS
Mon Tues,
Wed & Fri 8-5,
Thurs 8-8, Sat 8-2

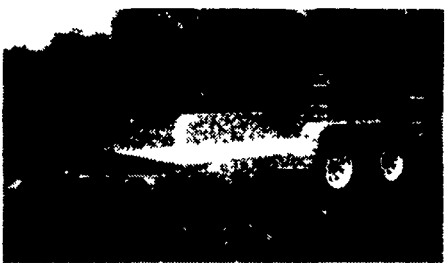
7760 Allentown Blvd. www.allproproducts.com 6250 Carlisle Pike
Mechanicsburg 717-795-9116 Harrisburg 717-671-9115
Trailer Repairs & Fabrication 717-795-9902 Orders 800-622-7003

A-SERIES EQUIPMENT
4'x8' up to 102"x18'



ALL SIZES

SKID STEER EQUIPMENT
12', 14', 16', 18', up to 14,000 GVW



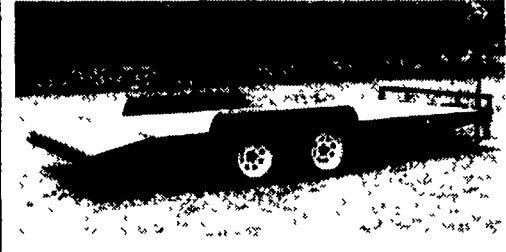
\$695⁰⁰
SPECIAL
w/This Ad

E-Z DUMPER INSERT w/Remote
6000 lbs./5 Cubic Yds.



\$1,695

6.4x16 SKID STEER EQUIPMENT
or Car Hauler w/Plank Deck, 7000 GVW



Phoenix TRAILERS



2000 CHEROKEE WARRIOR
20' Stock Trailer Complete. Rubber Mats, Divider With Outside Release, Plexiglass Slat Closure, 14,000 lb GVW **\$12,265**



WESTERN SNOW PLOWS
Quickly and Easily Removed When Not In Use

FINANCING AVAILABLE - TRADE-INS ACCEPTED



2- Horse Bumper Pull Trailers In Stock
Bison 2-Horse Bumper Pull Trailers In Stock



Cherokee Gooseneck 3 & 4 Horse Trailers, All Aluminum, Ready To Go



50 Enclosed Trailers In Stock



New & Used Open Utility Trailers Various Sizes

YARNALL'S EQUIPMENT CO., INC.

4171 Horseshoe Pike (Rt. 322) Honey Brook, PA 19344
(610) 273-9200 • 1-888-900-7669
Open 6 Days - Til 7:00 P.M. Tuesdays

AL HAMILTON USED TRUCK SALES

P.O. Box 157
55 Doe Run Road, Manheim, PA 17545
Phone: 717-665-7145 Fax: 717-665-2137



'92 FORD LN8000
C&C, 7.8 Ford Diesel, 210 HP, 6 Spd. Trans., Custom Cab, Air Brakes, 234 W.B., 168 C.A., 33,000 GVW **\$18,500**



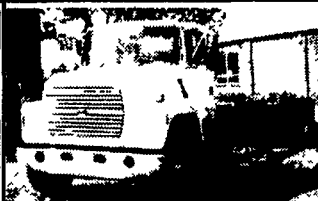
'94 FORD F700
C&C, 429 Gas, 5 Spd Trans., 14,000 Actual Miles, 207 W.B., 140 C.A., Like New **\$17,500**



'94 FORD LN8000
New 10' Dump, 8.3 Cummins 210 HP, 6 Spd Trans., Air Brakes, Custom Int., 35,000 GVW **\$29,500**



'86 FORD LN8000
New 10' Dump, 3208T, 250 HP, 5 Spd. Trans., 2 Spd. Rear, Custom Int., 33,000 GVW **\$19,500**



'95 FORD LN8000
C&C, 8.3 Cummins, 210 HP, 6 Sp. Trans., Custom Int., Air Brakes, A/C, 260 W.B., 192 C.A., 35,000 GVW **\$23,500**



'94 FORD LNT 9000 C&C
L-10 Cummins 280 HP, 9 Spd. Trans., Air Brakes, A/C, 264 WB, 192" C.A., 58,000 GVW **\$35,000**



'87 FORD LN 8000 C&C
7.8L Ford Diesel, 240 HP, 6 Spd. Trans, Custom Cab, A/C, Air Brakes, 222 W.B., 156 C.A., 33,000 GVW **\$16,500**



'93 INT. 4900
w/18' Morgan Box & Lift Gate, 8' High, 102" Wide, DT-466, 5-Spd. Trans., 35,000 GVW, A/C, Air Brakes **\$19,500**



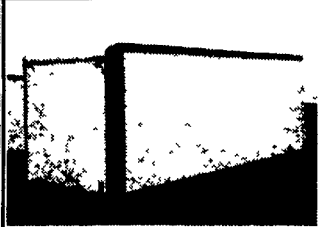
'93 INT. 4900
Tandem C&C, DT-466, 250 HP, 254" WB, 7 Spd Trans, 186 C.A., 58,000 G.V.W **\$32,500**



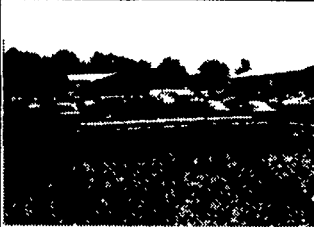
'93 INT 4700
16' Van Body w/Lift Gate, DTA 360, 170 HP, Hyd. Brakes, A/C, 25,500 GVW, 5-Spd. Trans. **\$15,500**



'89 FORD LN8000
New 10' Dump, 7.8L Engine, 240HP, 6-Spd. Trans., 33,000 GVW **\$21,500**



USED VAN BODIES
18'-26' Starting **\$2,000**
1 - 18' Hackney Reefer Body w/MD1 Thermo King, Good Working Condition **\$3,500**



'98 EAGER BEAVER
10 HA-PT, 22' Deck, 6' Ramps, 102 Wide, Air Brakes, 25,000 GVW, Brand New **\$9,500**



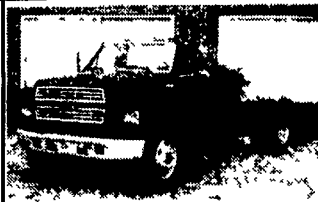
'85 INT. 1700 16' FLAT DUMP
9L Engine, 5 Spd. Trans., Hyd Brakes, 25,000 GVW **\$14,500**



'95 INT. 4700 C&C
DT408, 5 Spd Trans, Hyd. Brakes, Custom Int., A/C, WB168, CA 108, 25,500 GVW **\$15,500**



'92 GMC TOP KICK
22' Van Body, 3116 Cat, 6 Spd Trans., PS, AB, Lift Axle, 52,000 GVW, Low Miles **\$28,500**



'93 FORD F-600 C&C
5.9 Cummins, 160 HP, 5-Spd. Trans., Hyd Brakes, A/C, 174" W.B., 108 CA, 25,500 GVW **\$14,500**



'94 FORD LNT 8000
26' Van Body, Lift Gate, Side Door, 8.3 Cummins, 225 HP, 9-Spd Trans, Custom Cab, A/C, 58,000 GVW **\$35,500**



'95 INT. 4900 C&C
DT-466, 210 HP, 6-Spd. Trans, Custom Int., A/C, 254" W.B., 185 C.A., Air Brakes, 35,000 GVW **\$23,500**



'94 FORD F600 C&C
5.9 Cummins, 160HP, 5-Spd Trans, 2-Spd Rear, Hyd. Brakes, A/C, Custom Cab, 174" W.B 104 C.A., 26,000 GVW **\$16,500**

"CLEANEST TRUCKS AROUND"