

TRUCKS AND TRAILERS

1990 Ford F150 Lariat, new V8, auto, AC, needs paint & tailgate, \$1500. York 717-332-7733

2000 Collin-Arndt alum stock trailer, gooseneck, double-deck, 22 ft long, 7 1/2 wide, 7 1/2 high, deck included, wood floor w/ mats, \$10,500. 570-649-6436

9 ton tri-axle General trailer, 22' flat top, steel ramps, elec brakes, tires ex, \$3500. 610-756-6610

1956 GMC Cab & Chassis, No Rust, Good to Restore \$1,000/obo 973-875-9899

81 Int'l 9670 400 Cummins 15spd, 11-22-5, Insp. Good Cond \$4,000/obo; 72 GMC Astro 400 Cummins, 13spd 11-22-5, Good Farm Truck or Restoration. \$3500; Also Wetline off this truck \$500 717-582-2348 after 6PM

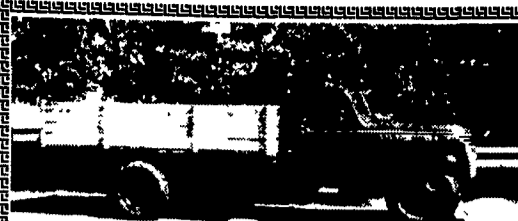
1987 GMC General tandem axle dump truck, 400 Cummins, 15' steel bed, trailer hitch, \$15,000 obo. 717-354-4160

97 F250HD Supercab diesel, auto, 8' bed, 4WD, 4:10 rear, tow hitch, gooseneck ball, 29,000 ml., \$25,000. 717/264-6181.

78 Chevy C70, scissors high lift box & dump, exc. for coal & construction, excellent no rust; 81 GMC tandem, 15' stone box 3yrs old, 238 Detroit, no rust, excellent. 570-966-0883 after 7pm.

Aluminum dump trailer, Parker 24', barn gate, coal chute & dump, good rubber, good condition, \$4000 OBO. Pull behind paver box, \$250 OBO. 908-454-6242.

2000 gooseneck trailer, 102x24, 10" I-beam, 14,000 GVWR, fold-over spring asst. ramps, 235-85R16 10-ply on 16" 8 lug whls, \$3735. 609-965-4527



1946 CHEVROLET
4 Spd., Green/Black Fenders, Totally Restored In And Out
\$10,000
Call After 7 P.M. M-F
Anytime Sat., Sun. **(540) 364-2668**

BIRCHWOOD AUTO SALES
717/866-5000

- 1997 CHEVROLET 3500 EXPRESS CARGO VAN, 350, AT, AC, 9500 GVWR, White, 56,000 Miles..... \$14,900
- 1996 FORD RANGER XLT, X Cab, 2WD, 2.3, 4 Cyl, 5 Spd, AC, Cass, Alloys, Black, 57,000 Miles.... \$7,900
- 1995 NISSAN XE, Excab, 2WD, 3.0 V6, 5spd, AC, PW, Mirrors, Tilt, Cruise, Cass, Alloys, Black, 78,000 Miles..... \$7,800
- 1994 GMC SONOMA, Xcab, 2Wd, 2.2 LT, 5 Spd, AC, CASS, Alloys, 70,000 Miles, Silver. \$6,900
- 1991 CHEVROLET 1500 SILVERADO, 2WD, 350, V8, AT, AC, PW, PL, Tilt, Cruise, Cass., Alloys, Topper, Blue/White, 67,000 Miles \$8,900
- 1990 FORD AEROSTAR, Cargo Van, 3.0 V6, AT, AM/FM, White, 50,000 Miles \$3,900
- 1987 ISUZU PUP, 2WD, 2.3 LT, AT, AC, FM, Power Steering and Brakes, Topper, Blue, 82,000 Miles..... \$3,995
- 1987 DODGE RAM 150 LE, 2WD, 318 V8, AT, AC, PW, PL, Tilt, Cruise, Cass, Alloys, Tutone Tan, 91,000 Miles..... \$3,700

CALL FOR SALE PRICES ON CARS AND SUVs
WE ALSO BUY CLEAN USED TRUCKS,
OLD OR NEW,
GAS OR DIESEL

(717)
866-5000



Myerstown, PA

1986 Int S1700, single axle, 10' dump, barn door, central hyd, pintle hook, air & elec hookup, \$13,500. 610-562-5186

'97 Toyota 4 runner, SR5, evergreen, ex cond, extras, \$21,500. Call 215-541-0420 ask for Bob

'95 Dakota pickup, 4x4 V-6, high miles, exc cond, \$6,500. 717-865-2022.

'95 Dakota pickup, 4x4 V-6, high miles, exc cond, \$6,500. 717-865-2022.

NORTH EAST ENTERPRISES

WORLD'S LARGEST STOCKING LANDOLL And TRAIL-EZE DEALER!

SALES - SERVICE - PARTS - RENTALS







New Fontaine Specialized 35, 50 & 55 Ton Detachable Gooseneck. Many Options Available. Call For Your Best Price.



2000 Trail-Eze 20 Ton Sliding Axle - Tilt Deck Trailer, Pintle Hitch Trailer. 30' Deck, Air Brakes, In Stock!!



2000 Trail-Eze 20 & 25 Ton Heavy Duty Tilt Deck Trailer, Pintle Hitch, Air Brakes, In Stock Now!!



New "2000" Landoll 323AG-48 Detachable 35 Ton Air Ride, 28x102" Drop Side with 24" Pull-Out Side Extensions, Self-Contained.

CALL TOLL FREE 1-877-526-3655

Ask for WAYNE or JULIE

E-mail: wayne@neent.com or julie@rjhmgt.com



www.beasleyford.com
1801 WHITEFORD ROAD, YORK
Mt. Zion Road Exit of Route 30
Phone (717) 755-2911



SALES:
Monday-Friday: 9AM-9PM
Saturday: 9AM-5PM

SERVICE:
Mon/Wed/Fri: 7:30AM-5PM
Tues/Thurs: 7:30AM-7PM

COMMERCIAL TRUCKS:
Mon-Friday: 7:30AM-7PM

Art may not represent actual sale vehicles

 <p>2001 FORD F150 CREW CAB XLT 3 In Stock, Choose From Either 4.6 V8 • 5.4 V8, 5.4L V-8, Trailer Tow, CD Changer, Cargo Cage, #017072-0</p>	 <p>2001 FORD ECONOLINE HALFBACK Half Luxury, Half Utility, #016010-0</p>	 <p>2001 FORD F250 REG. CAB 4x4 SUPER DUTY XLT Trim, 7.3 Power Stroke Diesel, Auto, Off-Road Pkg., 8,800 GVW, #017046-0</p>	 <p>2000 FORD F350 SUPER CAB DUALY 4x4 158" Wheel Base, XLT Trim, 7.3 Power Stroke Diesel, 6-Speed, Power Take Off, #007394-0</p>	 <p>2000 FORD F350 CREW CAB DUALY 172" Wheel Base Power Stroke Diesel, #007415-0</p>
 <p>1997 FORD SUPER DUTY F250 SUPER CAB 4x4 XLT Trim, V-8, All Power Options, 24,000 Miles, Green, #9599-0 \$22,500</p>	 <p>1998 FORD RANGER SUPER CAB 4x4 XLT, Trim, Flare Side, 5 Speed, 4L Eng, CD Stock #9578-1 \$16,550</p>	 <p>1999 FORD E-350 CARGO VAN V8, Auto, Cruise & Tilt, Glass Side & Rear, 26,000 Miles</p>	 <p>1999 FORD SUPER DUTY F250 4x4 XLT Trim, Auto, V-8, All Power Options, 28,400 Miles, Red, #9603-0 Reduced</p>	 <p>1999 FORD SUPER DUTY F250 SUPER CAB XLT Trim, Auto, Diesel, All Power Options, 27,600 Miles, Red, \$28,499-Reduced</p>
 <p>2000 E450 PAR VAN 16' W/B 176, Color White, Engine 7.3L Diesel, Auto Trans., GVW 14,050</p>	 <p>2000 F650 CREW CAB GVW 26,000, W/B 266", CA 150", Engine Cat 3206B, 190 HP, Transmission 6 Speed</p>	 <p>"Must Go" 2000 FORD F350 S/W 4x2 Color White, Auto 5.4 V-8, XLT Trim, AC, AM/FM/Cass., GVW 9,900, 9' Utility</p>	 <p>2000 F650 REG CAB Color White, Trim XLT, GVW 26,000, W/B 260", CA 186", Engine Cat Diesel/3126B, HP 190, Trans. 6 Speed Manual</p>	 <p>"Only 1 Left" 2000 F550 4x2 W/B 165", CA 84", Color White, Engine 7.3 Diesel, Trans. Auto 4-Speed, GVW 14,500</p>