

32 MISCELLANEOUS

175,000 BTU, Well-McLain, LP gas boiler w/natural gas regulator, \$425. No Sunday calls 570-524-7998

1 Seated fiberglass Menonite carriage, \$1450, delivered to Lancaster Co. 570-524-7998

1946 Original mahogany Christcraft boat, ready for restoration, \$2000. York. 717-332-7733

Large dust collector 15 hp, auto shaker 21 bag, Binks 36" paint booth fan 2 hp new & scales. 856-232-7686.

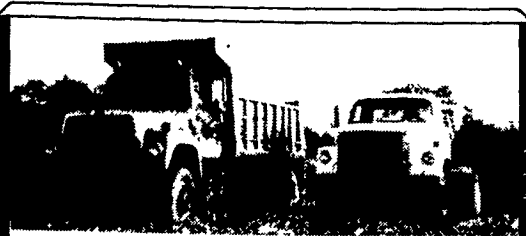
8X10' Walk-in cooler, 8x10' walk-in freezer. Like new cond. 18' Styer double duty dell case. 717-656-7024.

Wanted: Complete honeybee business for my farm. 856-785-1996.

Cummins BC Series Mdl 6RTA 5.9 Turbo Charge Power Unit w/Straight Clutch, Use for Power Plant or Repower your Tractor or Dodge Ram Pick Up. 185HP at 2600 RPM. Call for Price Between 7AM-12PM. Lanc., Co., 610-593-6112

Solar Heat Gen. elect. mod T-C 100, 8 vacuum tube collectors 35x43 + cabinet with controls. 908-453-2088

35 TRUCKS AND TRAILERS



1978 Ford 8000 T/A dump, 671 detroit, 13 spd, 14ft bed tardeum lock, fair condition. \$8,750 obo.

1974 Int. 2070A S/A road tractor 671 detriot, 5/2 speed, air brakes Jake brake, will accommodate 10' dump, good condition. \$2,750/obo. 540-459-5975

ADVERTISED SPECIALS

- 1994 Ford Bronco XLT 4x4, V8, Auto, Red Raspberry, All Power, Leather ..... \$11,900
- 1994 Toyota 4 Runner, SR5, 4x4, Red, V6, 5 Spd, Leather, All Power, Sunroof. .... \$13,900
- 1993 Chevy Tk. Ex. Cab 1500 4x4 Z71, Blue & Silver, V8, Auto, AC, PW, PB, PS, PDL ..... \$14,900
- 1991 GMC Tk. Ex. Cab 2500 4x4, Gray & Silver, V8, AT, AC, T/C, PW, PDL ..... \$10,900 with Plow \$11,500

WORK SPECIAL

- 1988 Chevy Tk Crew Cab 2x4, White, V8, 4 Spd., PS, PB, AC ..... \$3,500
- 1985 Ford Ranger 2x4, Red, 4 Cyl., Auto, PS, PB. .... \$1,900
- 1980 Dodge Tk Sportsman 150 Tk., Green, 6 Cyl., 4 Spd., PS, PB ..... \$1,000

HOLLIDAY AUTO SALES

(717) 295-5583

A Complete Service Garage PA State Insp

35 TRUCKS AND TRAILERS

BUY, SELL, TRADE OR RENT THROUGH THE CLASSIFIED ADS

PHONE: 717-626-1164 or 717-394-3047 FAX 717-733-6058 Mon., Tues., Wed., Fri. 8 AM to 5 PM; Thurs. 7 AM to 5 PM



4294 E. HARRISBURG PIKE DEPARTMENT LF CATALOG MIDDLETOWN, PA 17057 (717) 944-0318 Route 230 Between Elizabethtown & Middletown

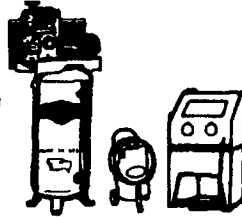
FREE CATALOG CALL OR WRITE NOW!!

MOST CLASS III HITCHES

\$79<sup>99</sup> to \$89<sup>99</sup>

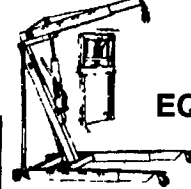


SAND BLASTERS & BLAST CABINETS

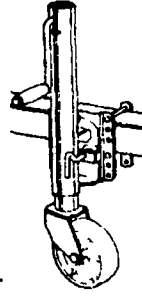


NEW GAS TANKS, SAVE \$\$\$

NEW RADIATORS



TOOLS AND EQUIPMENT



AUTOBODY PARTS, PAINTS & SUPPLIES

BUILD OR REPAIR YOUR TRAILER. WE HAVE PARTS.



USED 4x4's Pickup's, Bronco's & Blazer - Call For Our Low Prices



NEW UTILITY TRAILERS 3,000 GVW, Extra Heavy Frames w/Treated Lumber Deck, Lights, Chains, Etc Included!!! 5'x10' Deck.....\$775 6'4"x12' Deck.....\$899 Add-On Landscape Ramp/Gate.....\$145

WE BUILD OUR OWN TRAILERS



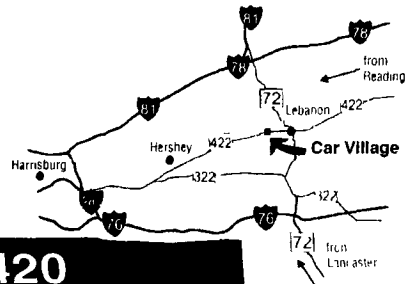
"NEW" 16' Deck Car Hauler Has Two 24" Wide Diamond Steel Runners Tube Steel Frame 4-Wheel Brakes Safety Breakaway Kit & Full Lighting Beavertail & Ramps, Removable Left Fender & More For \$1,799

Hours: Tues.-Fri. 9 AM - 6 PM Saturday 9 AM - 2 PM Closed: Sunday & Monday

Business Hours: Mon.-Fri. 9 to 9; Sat. 9-4

2300 W. CUMBERLAND ST. (Rt. 422) LEBANON, PA 17042 (Across From Lebanon Valley Mall)

CAR VILLAGE HEAVY DUTY TRUCKS



PHONE 717-274-2000 Toll Free 1-800-650-1420



\$28,900 2000 FORD F250 QUAD CAB 4 WHEEL DRIVE Great Price on a Nice Truck Only 3,000 Miles, Remaining New TK Warranty, Powerstroke Diesel, AT, AC



6 SP POWERSTROKE, 99 FORD F250 4x4, Excellent Tow Machine, Powerstroke Diesel, 6 Sp Trans, Loaded XLT, 40/20/40 Seat, Limited Slip, 3 73 Gear, Alu. Wheels - \$28,900



5 SPEED - 1 TON 97 FORD F350 XLT 4 Wheel Drive, Solid Front Axle, Lock Out Hubs, Dual Tanks, Beautiful Two-Tone Paint



4X4 DUALY 98 DODGE 3500 Cummins Diesel, 5 Sp Laramie SLT, A/C, Full Power, 4 10 Gear, Only 30,000 Miles, Remainder New TK Warranty, Great Tow Machine



BIG BAD DODGE, 2000 QUAD CAB DUALY 4 WHEEL DRIVE LIKE NEW, All Factory Warranties, Only 11,000 Miles, 24 Valve Cummins AT, A/C, All Options, Chrome Wheels, Tow Pkg, 4 10 Gears & Dana Axles, All The Good Stuff



DUMPING FLATBED - 95 CHEVY H.D. 3500 Nice, Only 44,000 Miles, 454 Gas, 5 Sp Trans., A/C, Chrome Simulators, 12 Foot Steel Bed, New Insp, Ready To Go



99 FORD F250 4X4 Good Looker, Only 42,000 Miles, Powerstroke Turbo Diesel, AT, A/C Comfortable 40/20/40 Seat, Aluminum Wheels, Heavy 8800 GVW



QUAD CAB SHORTBED 4 WHEEL DRIVE 98 DODGE 2500 24 Valve Cummins Diesel, 5 SP Trans, A/C, Chrome Wheels, Tow Pkg., Nice Driver



GAS 4X4 97 FORD F250 Heavy Duty, 3/4 Ton, Only 46,000 Clean Miles, 351 Fuel Inj., V8, AT, A/C, Limited Slip 4 10 Gear, Dual Tank, Priced Right Only \$18,900



5 SP CUMMINS 97 DODGE 2500 4X4 Only 12,000 Miles, Cummins Turbo Diesel, A/C, Frt & Rear Dana axles, Chrome Wheels, Just Like New



5 SP CLUB CAB 97 DODGE 2500 4 Wheel Drive, Hard To Find, 5 SP Cummins, Diesel, A/C, Tow Pkg., 65,000 Miles, Real Clean



FLATBED DUMP, 95 CHEVY TILTMASER 4 Cyl. Intercooled Turbo Diesel, AT, 12 Ft. Bed, Steel Floor, Pull Out Ramps, Runs & Works Well



93 DODGE CLUB CAB DUALY 2 Wheel Drive, Great Tow Machine, Strong Cummins Turbo Diesel, 5 Sp Trans. Real Clean Inside & Out, 98,000 Original Miles \$16,900



14 FT FLATBED, 98 CHEVY HD 3500 Awesome Tk., 15,000 G.V.W., 19.5 Rubber, Vortec 454 V8, Auto, A/C, 30,000 Clean Miles



17' ALUMINUM DUMP BODY 99 ISUZU NPR Only 15,000 Miles, Turbo Diesel, AT, A/C Multi-Purpose Body



\$8,900 93 FORD F250 4 WHEEL DRIVE Heavy Duty, 3/4 Ton, V8, 5 Sp Trans., Lock Out Hubs, Great Work Truck



CREW CAB 4X4, 97 FORD F350 XLT Nice, Clean, Good Running Truck, Powerstroke Diesel, AT, Loaded XLT, Lock Out Hubs, Aluminum Wheels, Limited Slip Gear, Check It Out



4 DOOR 4X4, 96 FORD F250 XLT They Don't Come Any Nicer, Perfect Inside & Out, Only 35,000 Miles, 460 V8, AT, A/C, Loaded XLT, Aluminum Wheels



DIESEL CARGO VANS We Have 2 - 2000 Ford E-350 & 1998 Ford E350, Powerstroke Turbo Diesel, Auto, A/C, Remainder New Tk Warranty, Call For Details



AUTO 1 TON 4X4 97 FORD F350's 2 Available, Powerstroke Turbo Diesel, AT, A/C Dual Tank, Solid Front Axle



99 FORD 450 CREW CAB 4 Wheel Drive, Rare Truck, Powerstroke Turbo Diesel, AT, A/C, Chrome Simulators, Low Profile Trailer Tow Body



98 DODGE 2500 4X4 - 5 SP. CUMMINS Nice, Clean Truck, Only 37,000 Miles, Cummins Turbo Diesel, 5 Sp., Tow Pkg., Remainder New Tk Warranty



\$3,900 82 CHEVY 4-WHEEL DRIVE Diesel Power, Auto, Excellent Body, Runs Well



THE NICEST ONE ANYWHERE! 97 FORD F250 SUPER CAB - 4 WHEEL DRIVE It is Perfect! You Must See! 21,000 Miles, Loaded, All Options, 351 F1 V8, AT, A/C, Aluminum Wheels, Dual Tanks & Lots More



96 FORD F250 SUPER CAB 4X4 Look At This One! Only 34,000 Miles, Heavy Duty 3/4 Ton Powerstroke Diesel, 5 Sp., A/C, 4 10 Gear, Lots of Power



550 CHASSIS CAB - 99 FORD SUPER DUTY Heavy 17,500 GVW, 201 WB, Remaining New Truck Warranty, Powerstroke Turbo Diesel, 6 Sp., A/C, AM/FM Radio, Like New



SUPER DUTY DUMP - 97 FORD Super Clean, Super Nice, Only 12,700 Miles, You Won't Find Any Nicer, Powerstroke, AT, 10 Ft. Body, Heavy 15,000 GVW



2 WHEEL DRIVE - 99 FORD F250 XL Package, A/C, 6 Speed Trans., Powerstroke Turbo Diesel, Limited Slip Axle, Like New, All New Truck Warranties



4X4 DUMP 2000 FORD F350 Like New, Only 2,400 Miles, Powerstroke Turbo Diesel, 6 Sp., A/C, New Truck Warranty



\$28,500 99 DODGE 2500 Quad Cab Pickup, 4 Wheel Drive, 24 Valve Cummins, Runs Real Strong, AT, A/C Tilt Cruise, Power Mirror, Locks & Windows, Gorgeous Interior, Tow Pkg., Chrome Wheels