

35

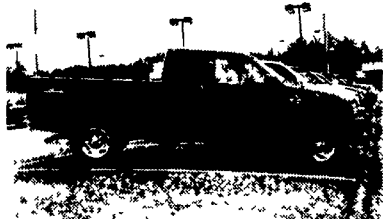
TRUCKS AND TRAILERS

CHAPMAN
Auto Group

CHAPMAN
AUTO GROUP



95 JEEP 4x4
AT, A/C, Low Miles, #P4541



98 FORD F150
Extend Cab, 4x4, Off Road Pkg., 5-Speed



97 NISSAN PATHFINDER LE
Leather, Moon Roof, Auto, Air, CD #P4538



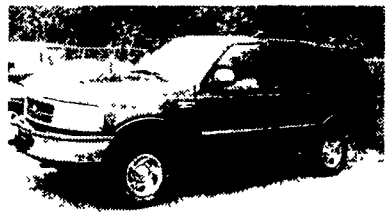
2000 NISSAN FRONTIER CREW CAB
4x4, V6, Auto, Loaded, Off Road Pkg., #P4537



98 FORD EXPEDITION XLT
Rear A/C, 3rd Seat, CD Changer, 17" Wheels, Running Boards, Perfect Family SUV



97 FORD F150 SUPER CAB
Lariat, 5.4L V8, AT, A/C, 2WD, Most Options, 25,000 Miles, Black, #P4474
\$20,998



2000 FORD RANGER
4x4, Low Miles



2000 FORD RANGER
XLT, Extend Cab, 4x4, Loaded

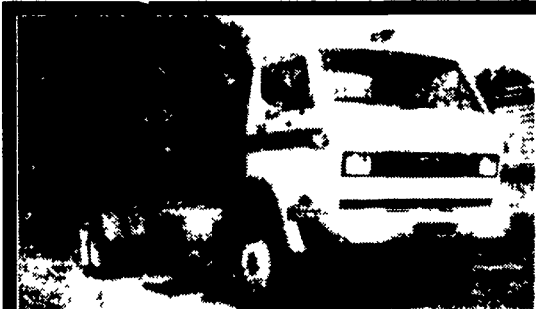


2000 FORD EXPLORER XLT
4x4, One Owner

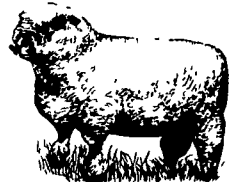


1992 GMC Topkick LoPro, 23,900 lb., GVW, 24 ft. Morgan Box, 366 V8, 4-Spd. Allison, AT, A/C, 140,000 Miles, New Brakes and Tires, Runs Excellent, Looks Good. **\$10,900**

717-361-9296



1990 GMC TOPKICK
26,000 GVW, 9 ft. Heil Dump, Tool Box, Pintle Hitch and Receiver, Elec. Brake Controller, 366 V8, 5 Spd., Great Shape!
\$15,000
410-357-4700



31 NOTICE

ADVERTISEMENT FOR BIDS

Notice is hereby given that sealed bids will be received in the Administrator's Office, 1st Floor, Municipal Building, 1117 Route 130 North, Robbinsville, Mercer County, New Jersey 08691 until 10:00 a.m. on Tuesday, November 21, 2000, and will be publicly read immediately thereafter for the following

"Sale of Township Owned Deed Restricted Farmland Known as Block 19, Lot 6"

Bid documents may be obtained during office hours (8:30 A.M. to 4:30 P.M.) Bids may be rejected if not submitted within time, date and at place designated and if not accompanied by a certified check, cashier's check or bid bond as specified in the bid document

Bidders are required to comply with the requirements of PL 1975, c 127 (NJAC 17:27) Any or all bids may be rejected, and an award made in whole or in part

Township of Washington
Administrator's Office
Richard G. VanNoy
Administrator

27 PETS

AKC Collie Stud Service
Nice Markings, from good stock
717/284-5146

WANTED

Rottweiler Puppies, Will Pick Up
Call Lillian
1-800-349-9970

- * (5) Double Galvanized HD Animal Cages on Wheels w/Trays, 4' wx3'dx6'6"h, \$250/ea,
- * (3) HD Animal Cages, Chainlink Sides & Top on Wheels, 9'6"lx36"hx3'8"d, total ht 5'10", \$300/ea
- * (2) Sets S/S Small Animal Cages on Wheels, 33'wx21"dx6'7"h. 48 Pens/Unit. \$150/Set

Pictures Available
Lan Co, PA **717-786-7824**

WANTED

AKC Puppies and Cute Mixed Breeds For Resale
Pampered Pup Kennels
(800) 307-7877

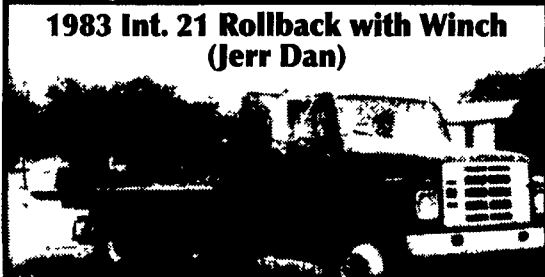
32 MISCELLANEOUS

LIVE GAME FISH Fingerlings and Adults, Large and Small Mouth Bass, Spotted and Rock Bass, Bream Crappies, Trout, Channel Cats, Bullheads, Walleyes, Perch, Minnows, Northern, Pickerel, Muskies, Red Gills, Mulletts, Carp, Eels, Turtles, Frogs, Israeli Carp Also Aquatic Plants and Water Lilies. EDUCATIONAL CATALOG \$2.00 Truck, Air and Parcel Post Delivery
ZETT'S FISH HATCHERIES
Specialists
Phone: 814-345-5357

- Generator set, 15 Kw Kohler, Waukesha Eng, propane, 3 Ph. 120/208 Volts... **\$2,200**
- Generator set, 25 Kw Kohler, Hercules Eng Gas, 3 Ph 120/230 Volts . **\$2,800**
- Generator set, 50 Kw Hol-Gar, Gas, 3 Ph 240/480 Volts, on trailer . **\$2,500**
- Generator set, 12.5 Kw, Hatz diesel, 1 Ph 120/240 Volts, On trailer . **\$1,800**
- Generator, 150 Kw, 3 Ph. 2-Bearing . **\$1,200**
- Lighting unit, 2 Kw, Gas, Portable..... **\$1,100**
- Lighting unit, 1 Cyl. Diesel, 2 lights, portable . **\$1,300**
- Abrasive wide belt sander, Sanding Master, 48" double belt . **\$5,500**
- Air Compressor, Worthington, 40 Hp Electric, complete **\$1,800**
- Air Compressor, Speed Aire, 2-10 Hp units on tank, 3 Ph **\$1,800**
- Jig Bore, Fosdick Sn 2222124, digital readout, NICE!... **\$5,000**
- Press, 150 ton, Hydraulic, 4'x8' Plywood Press.... **\$2,800**
- Roller, Walk behind, Hatz Diesel, Vibrator... **\$2,500**
- Crane Magnet, 42" **\$1,200**
- Crane Scales, 10,000#, Digital. . . **\$650**
- Loader, 175 Michigan, GM Diesel, Runs and Operates **\$3,500**
- Forklift, 15,000# Yale, Air Tires, Propane **\$3,500**
- Concrete Saw, 16" Diamond blade, gas powered, w/water attachment **\$1,600**
- Solid rubber tires for Ford Tractor, complete set . . . **\$400**
- White cedar shingles, 5/8" (15 Sq) **\$100/Square**

717/354-3105

35 TRUCKS AND TRAILERS



1983 Int. 21 Rollback with Winch (Jerr Dan)

7 Spd. Trans, 2 Spd. Rear D.T. 466, Air Brakes, 35,000 GVW, Clean **\$13,500**

Contact: Webb's Super-Gro Prod. Inc., Mill Hill, PA **717-726-4150**



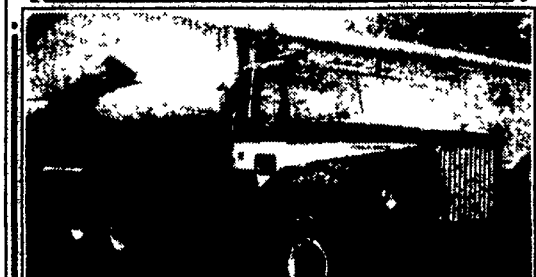
1984 GMC Top Kick 7000, 3208 Cat Diesel, 32,200 GVW
\$3,500

717/354-4966



1990 International Dump 4600, Fold Down Sides, Diesel, Auto Tool Boxes, 2 Hitches, Plow Frame, Brake, Controller, Low Miles, Great Shape
\$18,900 Or Best Offer

908-369-5899



1978 Autocar Manure Truck. Inspected, 3800 Gal. Tank. Priced at **\$11,000**

717/626-8191