

Poultry Manure Management, Use Strategies Focus Of National Symposium

(Continued from Page A1)

morning to about 270 registered producers, agents, and other agri-industry professionals at the National Poultry Waste Management Symposium at the Sheraton Fontainebleau Hotel in Ocean City, Md.

In one area of North Carolina, broiler complexes turn out much manure. To some, that's a problem. But 35 miles east or north, said Carpenter, "farmers are crying for poultry manure," he said. "It's a matter of getting it to them."

It can be economical, according to resource management experts, to transport manure 100-350 miles if used as fertilizer and 300 miles if used as a feed. But processors must alter the form into something landscapers or feed handlers can use.

Processors can pelletize the manure, chemically enhancing it for fertilizer. The manure can even be used in potting soil mixtures, can be fed to cattle, and can be used as soil additive or as fuel.

Making use of the resource, while a challenge now, could be a nonissue in 5-10 years, the way the conversion technology is progressing, according to the North Carolina agent. The prob-

lem, Carpenter noted, "will be solved and then we can move onto other things. The technology is there, we just have to find out what it is."

He mentioned several producers across the country that generate manure and sell directly to farmers who use it as a directly applied fertilizer. One, Herbrucks Eggs in Michigan, manages more than a million layers and has enough demand for manure that they could sell "ten times as much," Carpenter said. "There's a lot of demand for the use of the product on corn in western Michigan."

Sparboe, in Iowa, has a 10-year contract with a grain company to take the manure. Sparboe gets a premium for a manure with high phosphorous levels, because the farmland in some parts of Iowa needs it.

A hatchery in west central North Carolina ships poultry manure to landscapers in the Raleigh, N.C. region. About 50,000 tons of manure per year from the hatchery are shipped to landscapers and for other uses.

Other companies have been selling to large home improvement store chains for compost, potting soil, and mulch. Golf

(Turn to Page A34)



Andy Rogowski with Daylay Egg Farm, West Mansfield, Ohio, center with white shirt, spoke at the symposium Monday. Daylay has about three million birds, including 2.6 million layers and 610 pullets on four farms. The farm direct-markets composted poultry manure as a soil additive.

5 Minutes is equal to a 4 mile walk!

"The CHI MACHINE"

Over 160,000 CHI MACHINES being sold EVERY MONTH!

The Sun Harmony Chi Machine is backed with 38 Years of Experience & Research With Medical Patents.

Erich from Colorado: "I am over 60 years young. I use the CHI MACHINE 8 to 10 minutes twice a day. I have relief from the pain and stiffness of arthritis, bad knees, legs, ankles and back."

FREE Information Meeting

Leola Family Restaurant - Mon., Nov. 20 - 7:30 pm
One Free "CHI" Given Away

717-656-6408 or 1-800-237-0400



The Fullers of Leola & Belinda Clark
93 W. Main St. (Rt. 23), Leola, PA 17540
www.chi4life.com/ginny



It Does The Work... You Get The Benefits!

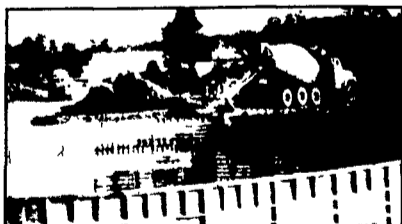
- Lose Weight
- Relieves Stress
- Relaxes Muscles
- Improves Circulation
- Increases Energy
- Improves Muscle Tone, Joints and Ligaments
- Improves Digestion and More!

POURED SOLID CONCRETE STORAGE SYSTEMS

17 Years Experience In Pouring Concrete Manure Pits!



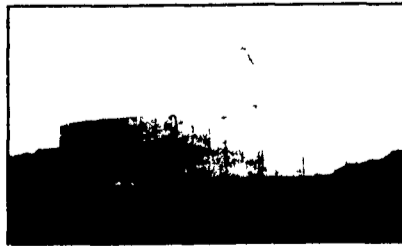
Far Left: 1-Million Gallon Circular Manure Storage Tank
Far Right: 2 Silage Pits In-Barn Manure Receiving Pit



Construction Of Partially In-Ground Liquid Manure Tank - 400,000 Gallons



300' Long Manure Pit For Hog Confinement



Above Ground Liquid Manure Tank 425,000 Gallons

CONCRETE PUMPING SERVICE AVAILABLE



Mixer And Boom Trucks



92' Boom Placing Concrete



Placing Concrete On Site

Take the questions out of your new construction.
Call Balmer Bros. for quality engineered walls.

All sizes available round or rectangular

Invest in Quality - It will last a lifetime.

Balmer Bros.

CONCRETE WORK, INC.

243 Miller Road
Akron, PA 17501

(717) 733-0353
6:30 AM - 3:30 PM

(717) 859-2074
After 6:00 PM



AGRICULTURAL ENGINEERING CONSULTANTS

"CALL US TO DESIGN YOUR NEXT BUILDING PROJECT"

FARMSTEAD PLANNING
BUILDING DESIGN
BLUEPRINT DRAFTING
VENTILATION DESIGN
DAIRY FACILITIES DESIGN

Timber Tech Engineering, Inc.
P.O. Box 145
254 West Franklin Street
Womelsdorf, PA 19567
PH: (610) 589-4589
FAX: (610) 589-5384

