

Junior Breeding Sheep Champions Announced At KILE

(Continued from Page A23)

Lane Farm WL388.

Corriedale junior breeding sheep champion ram went to Kyle Feldman of Newtown, with Frankie. Reserve was awarded to Billy Howe of Wayland, N.Y., exhibiting 06.

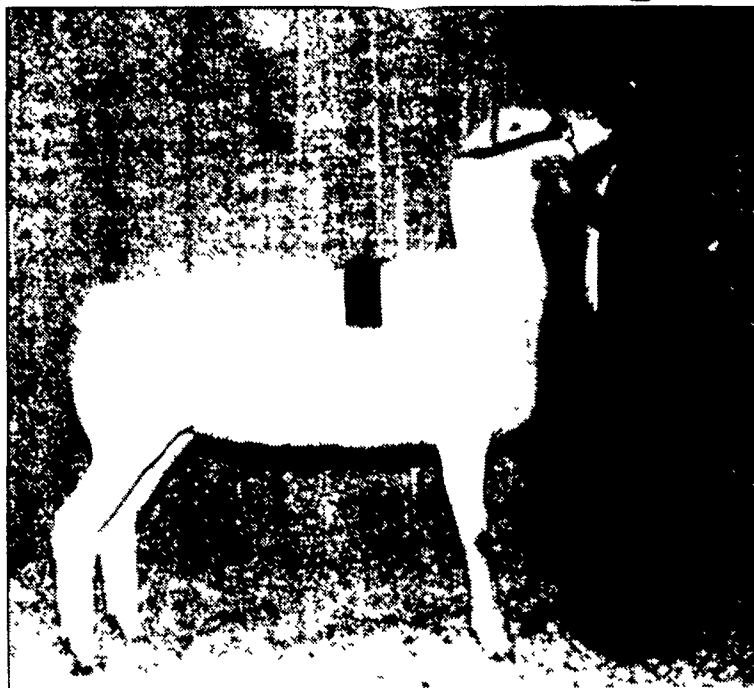
Howe also took champion ewe with 07. Jeff Koch of Limekiln won reserve with Natasha.

Shane Conaway Newville, took the Suffolk junior breeding sheep champion ram with Pine Haven 00P1096. Reserve went to Ginlip Farm of Groton, N.Y., showing a spring ram lamb.

Champion ewe was awarded to Conaway showing Pine Haven 00-1107. Reserve went to Katrina Frey of Quarryville with Breezeview 15.

Stacey Johnson of Minerva, Ohio, was awarded the Oxford junior breeding sheep champion ram with Johnson 509. There wasn't a reserve champion ram.

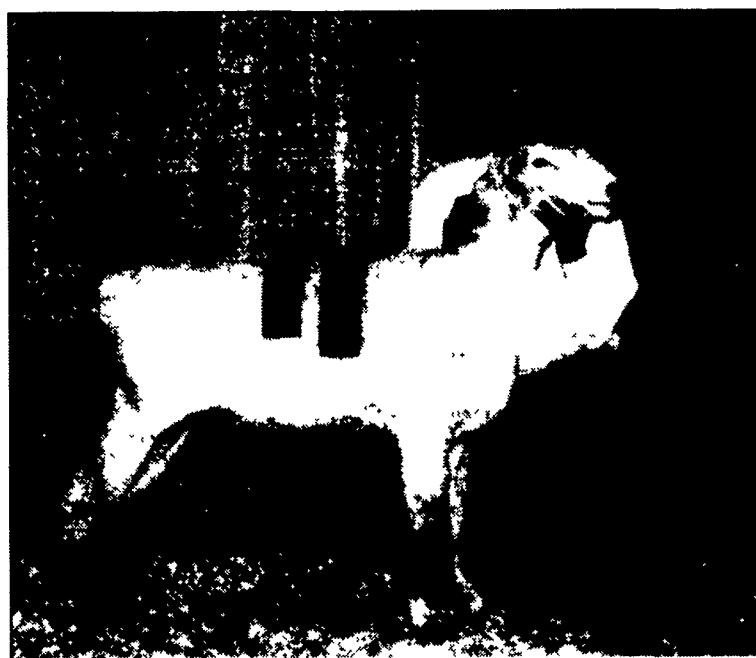
In addition, Stacey took champion ewe with Johnson



2000 Dorset junior breeding sheep grand champion ewe, Lindsey Beatty.

507. She also won reserve champion ewe with Johnson 508.

Following is a list of show placings.



2000 Corriedale junior breeding sheep grand champion ewe, Billy Howe, Wayland, N.Y.

KILE JUNIOR BREEDING SHEEP

SHOW RESULTS

2000 CHEVIOT

JUNIOR BREEDING SHEEP

Class 502-Spring ram lamb: 1. Tony Haugh. 2. Tony Haugh.
Class 503-Champion ram: Tony Haugh.
Class 504-Reserve champion ram: Tony Haugh.
Class 505-Yearling ewe: 1. Alyssa N Poorman. 2. Tony Haugh. 3. Tony Haugh.
Class 507-Spring ewe lamb: 1. Tony Haugh. 2. Tony Haugh.
Class 508-Champion ewe: 1. Alyssa N. Poorman.
Class 509-Reserve champion ewe: 1. Tony Haugh.

2000 CORRIEDALE JUNIOR BREEDING SHEEP

Class 522-Spring ram lamb: 1. Kyle Feldman. 2. Billy Howe. 3. Brent Grice.
Class 523-Champion ram: Kyle Feldman.
Class 524-Reserve champion ram: Billy Howe.
Class 525-Yearling ewe: 1. Jeff Koch. 2. Alice M. Phillips. 3. Kyle Feldman.
Class 526-Fall ewe lamb: 1. Kate Painter. 2. Brent Grice. 3. Brent Grice.
Class 527-Novice ewe lamb: 1. Megan Heath. 2. Jeff Koch. 3. Zion's Bounty.
Class 528-Spring ewe lamb: 1. Billy Howe. 2. Megan Heath. 3. Jeff Koch.
Champion ewe: Billy Howe.
Reserve champion ewe: Jeff Koch.

2000 DORSET - JUNIOR BREEDING SHEEP

Class 531-Fall ram lamb: 1. Lindsey Beatty. 2. Lindsey Beatty. 3. Jennifer Zimmerman.
Class 532-Spring ram lamb: 1. Ruzowicz Dorsets. 2. Bridget McConn. 3. Laura Hunter.
Class 533-Champion ram: Lindsey Beatty.
Class 534-Reserve champion ram: Lindsey Beatty.
Class 535-Yearling ewe: 1. Lindsey Beatty. 2. Bridget McConn. 3. Lindsey Beatty.
Class 536-Fall ewe lamb: 1. Lindsey Beatty. 2. Laura Hunter. 3. Laura Hunter.
Class 537-Spring ewe lamb: 1. Thomas Beatty. 2. Bridget McConn. 3. Lindsey Beatty.
Class 538-Champion ewe: Lindsey Beatty.
Class 539-Reserve champion ewe: Bridget McConn.

2000 HAMPSHIRE - JUNIOR BREEDING SHEEP

Class 541-Fall ram lamb: Robin L. Harkins.
Class 542-Spring ram lamb: 1. Sulfur Run Farm. 2. Sulfur Run Farm.
Class 543-Champion ram: Sulfur Run Farm.
Class 544-Reserve champion ram: Robin L. Harkins.
Class 545-Yearling ewe: 1. Sulfur Run Farm. 2. Sulfur Run Farm. 3. Robin L. Harkins.
Class 546-Fall ewe lamb: 1. Robin L. Harkins.
Class 547-Spring ewe lamb: 1. Sulfur Run Farm. 2. Amber Lattnr. 3. Joshua Howe.
Class 548-Champion ewe: Sulfur Run Farm.
Class 549-Reserve champion ewe: Sulfur Run Farm.

2000 MERINO - JUNIOR BREEDING SHEEP

Class 551-Fall ram lamb: 1. Randy Frame. 2. Kyle Stout. 3. Natasha Fahmi.
Class 552-Spring ram lamb: 1. Kyle Stout. 2. Randy Frame. 3. Darren Crouse.
Class 553-Champion ram: Randy Frame.
Class 554-Reserve champion ram: Kyle Stout.
Class 555-Yearling ewe: 1. Kyle Stout. 2. Randy Frame. 3. Randy Frame.
Class 556-Fall ewe lamb: 1. Randy Frame. 2. Kyle Stout. 3. Randy Frame.
Class 557-Spring ewe lamb: 1. Randy Frame. 2. Kyle Stout. 3. Randy Frame.
Class 558-Champion ewe: Kyle Stout.
Class 559-Reserve champion ewe: Randy Frame.

2000 MONTDALE - JUNIOR BREEDING SHEEP

Class 562-Spring ram lamb: 1. Sara Lutz. 2. Sara Lutz. 3. Ronald Lee Ferguson.

(Turn to Page A33)

SEEDWAY TRIPLE CROWN

For Hard Hitting Silage Performance!

E390L

98 day

"Leafy" gene hybrid

#1 in Penn State University zone one silage trials for three consecutive years ('97, '98, '99)

E409L

100 day

"Leafy" gene hybrid

High silage yield potential
Excellent forage quality profile

E670L

108 day

"Leafy" gene hybrid

Medium stature, good ear size
Outstanding yield & quality



Other Heavy Hitters In The Seedway/Asgrow Lineup!

E680

110 day, "multipurpose" hybrid, silage & grain production. Gray Leaf Spot tolerance.

E705

111 day, "multipurpose" hybrid, high silage & grain yield potential. Plot topper at **James Long Farm, Greencastle, PA**, 9.21 ton/acre dry matter yield (harvested 9-5-00) and at the **Ray Horst Farm, Waynesboro, PA** with 9.19 ton/acre dry matter yield (harvested 9-8-00). Versatile and consistent!

RX708

108 day, excellent grain hybrid for maturity, very good standability, emergence, seedling vigor & disease tolerance.



MIFFLINBURG, PA..... 800 - 338 - 2137

MECHANICSBURG, PA... 877 - 788 - 8982

YORK, PA..... 800 - 836 - 3720

EMMAUS, PA..... 800 - 225 - 4131