

35

TRUCKS AND TRAILERS



1998 Int. 4700 Low Profile (Loaded) (Nice)
 With DT-466 E Engine, 25,200 GVW, Rest Rite Sleeper, JerrDan 22' Rollback Modl 22AW5 w/3000 lb Car Lift (Rear) & Light Bar, Cruise Control, Heated Mirrors (West Coast), Tinted Glass, Air Ride Rear Bed Suspension, 2-50 Gal Fuel Tanks, 2-4' Aluminum Tool Boxes, Driver & Passenger Air Ride Seats, Tilt & Up & Down Steering, Air Horns, Radio & CB, 6&1 Speed Trans, Differential Lock, AC, Power Steering, Power Windows, Sun Viser, Bug Reflector
Must See To Appreciate
Call 717-626-1151

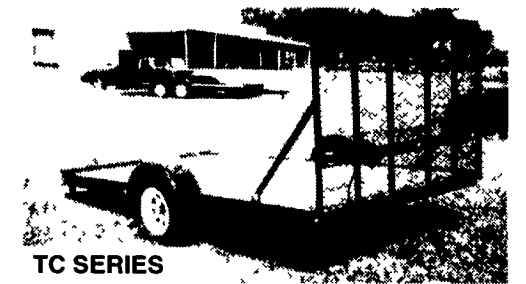
USED TRUCKS FOR SALE

- 1999 FORD F350 QUAD CAB, Power Stroke Diesel, 6-Speed, 4x4, XLT 95K Miles . . . **\$24,900**
- 1999 FORD F250 QUAD CAB, 2WD, 5 4 V8, AT, 116K Miles **COMING IN**
- 1997 FORD MAXIVAN, AT, 5 4L V8, 15 Passenger, 21K miles **\$18,900 \$16,900**
- 1994 FORD F450 SUPER DUTY, 2WD, 12' Box, 5 Spd Diesel, No Air, 68,000 Miles **\$14,500**
 (Without Box) **\$13,500**
- 1993 CHEVY S10, 2 8 6 Cyl., 5-Spd., No AC, 75K Miles **\$3,900**
- 1989 DODGE MAXIVAN, 15 Passenger, AT, A/C, 139K Miles **\$3,500**
- 1987 CHEV. C30 DUALY, 8ft Bed Setup for Towing, 4 Spd., 2WD, No AC **\$5,500**

SCHAEFFERTOWN AUTO & TRUCK SALES

Rt. 501, 1-1/2 miles South of Schaefferstown
717-949-2812

Zimmerman Custom Built Utility Trailers



TC SERIES



GOOSENECKS



RT SERIES



FRT SERIES

RT and FRT Series Trailers Available in 5000# thru 12,000# GVW. We Also Build Other Models, Sizes, and Capacities. Call For Information.

ZIMMERMAN MANUFACTURING LLC

125 KING COURT • NEW HOLLAND, PA 17557-9212
 717-354-9611 • Toll Free (877) 456-7126

Contact Us For Literature Or The Dealer Nearest You!

NORTH EAST ENTERPRISES

WORLD'S LARGEST STOCKING LANDOLL And TRAIL-EZE DEALER!
SALES - SERVICE - PARTS - RENTALS



New Fontaine Specialized 35, 50 & 55 Ton Detachable Gooseneck. Many Options Available. Call For Your Best Price.



2000 Trail-Eze 20 Ton Sliding Axle - Tilt Deck Trailer, Pintle Hitch Trailer. 30' Deck, Air Brakes, In Stock!!



2000 Trail-Eze 20 & 25 Ton Heavy Duty Tilt Deck Trailer, Pintle Hitch, Air Brakes, In Stock Now!!



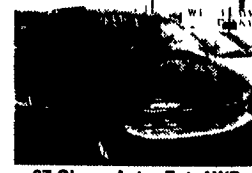
New "2000" Landoll 323AG-48 Detachable 35 Ton Air Ride, 28x102" Drop Side with 24" Pull-Out Side Extensions, Self-Contained.

CALL TOLL FREE 1-877-526-3655

Ask for WAYNE or JULIE

E-mail: wayne@neent.com or julie@rjhmgt.com

WILLIAM H. WESSELS USED CARS



97 Chevy Astro Ext. AWD Van, V6, Auto, Dual AC, Quad Seats, 68,000 Miles **\$13,900**



97 Ford F250 4x4 XLT, 460 V8, Auto, AC, 29,312 Miles - Nice! **\$23,900**



1927 Hupmobile, Original Except For Paint, Very Solid, Drives Well **\$8,990**



2000 Dodge Ram 1500 Quad Cab, 4x4, 5.9 V-8, PW&L, T&C, Red **\$23,900**



97 Chevy 15 Pass Van, V8, Auto, AC, 24,210 Miles **\$16,900**



96 Ford F250 Ex. Cab, Long Bed, 4x4, 460 V-8, Auto, AC, 81,000 Miles **\$17,900**



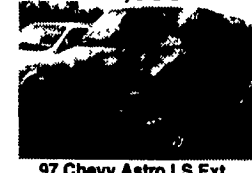
87 Chevy C10, Very Nice, Original, Only 80,000 Miles **\$4,990**



96 Ford F250 XL, 460 V-8, Auto, AC, 81,207 Miles **\$17,900**



99 Dodge Grand Caravan, 44,000 MI. **\$15,900**



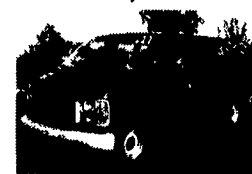
97 Chevy Astro LS Ext. Van, V6, Auto, AC, Nicely Equipped, Local Trade, 51,622 Miles **\$12,900**



93 Volvo 20' Stake Truck, 6 Speed, 3116 Cat Eng., Power Lift Gate **\$13,900**



95 Ford F250 4x4, V8, Auto, AC, 112,207 Miles **\$8,990**



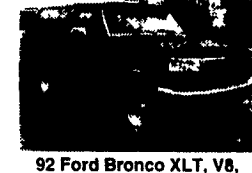
98 Chevy G 1500 Cargo Van V6, AT, 52,000 Miles **\$9,900**



95 Mitsubishi 20' Box, 5 Speed, 6 Cyl. Diesel, 81,000 Miles **\$15,900**



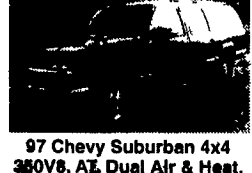
95 Ford F Series, 24' Box, Cummins Diesel, Auto, PS, AC, 26,000 GVW, 134,000 Miles, Non-CDL **\$14,900**



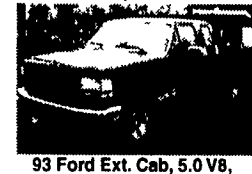
92 Ford Bronco XLT, V8, Auto, AC, Local Trade, 97,614 Miles **\$6,990**



95 International 24' Box Truck, 6 cyl. Diesel, AC, 7 speed, 167,318 Miles, Curb Door, 32,200 GVW **\$16,900**



97 Chevy Suburban 4x4 350V8, AT, Dual Air & Heat, 34,560 Miles **\$23,900**



93 Ford Ext. Cab, 5.0 V8, AC, 5 Speed, 4x2, 143,207 Miles **\$5,990**



92 International Tractor **\$13,900**



97 GMC Yukon SLT, 4x4, 34,000 MI. **\$20,900**



97 Ford F250 XL, 5.8 V-8, Auto, AC, 91,207 Miles, 8600 GVW **\$14,900**



93 Chevy, 15 Pass. Van, Dual Air, 81,000 MI. **\$8,900**



95 Isuzu 14' Stake Diesel, 5 Speed, 141,000 Miles **\$12,900**



77 Chevy Flat Bed Dump, Nice Older Truck **\$6,990**



93 Oskosh 14' Passenger w/Wheelchair Lift Shuttle Bus, Cummins Diesel, 1 Owner, 94,408 Miles - Nice **\$14,900**



97 International 9400 Eagle, Cummins M14, Air Ride, 1 Owner, 126,000 Miles, Factory Warranty **\$49,900**



95 Ford F450 Super Duty 8' Box w/Lift Gate, Power Stroke Diesel, Auto, AC, 113,278 Miles **\$11,900**



94 GMC 14' Box Truck, 350 V8, Auto, 117,000 Miles, 14,000 GVW **\$7,990**



96 GMC K1500 Long Bed, Ex. Cab, 4x4, 96,107 Miles **\$14,990**



94 Ford E350 12 Pass Van, V8, Auto, Dual AC, 39,380 Miles **\$11,900**



93 GMC White DT80 12.7L, 500,000 Miles, Others To Choose From **\$14,900**



97 Chevy Tahoe LS 4x4, V8, Auto, AC, 75,260 Miles **\$16,900**

WILLIAM H. WESSELS USED CARS

811 Route 15 Dillsburg, PA
1-800-440-4433 1-717-432-2918
 Notary Public - Temporary Tags