

Free to good home, Siberian Husky, need firmness 570-758-3250.

Border Collie & Black Lab mix puppies for sale, 8 wks old. Only good home need apply. If no answer, lv message, 717-862-1815.

AKC Collie puppies, sable & white, Vet checked, \$350. 717-436-9798

Available Now, Great Pyrennes Puppies, \$100-\$150. Huntingdon, PA, 1-800-485-0729.

**WANTED**

Rottweiler Puppies, Will Pick Up Call Lillian 1-800-349-9970

Church variety sale: Sat., Nov. 4th 9AM - 1PM at 105 N. Bridge St., Elkton, MD Clothes, hsehd items, cookbooks 4 sale.

**LEGAL NOTICE**

**TRUCK, SNOWPLOW & CINDER SPREADER FOR SALE**

Colerain Township Board of Supervisors, Lancaster County, 1803 Kirkwood Pike, Kirkwood, PA 17536 is accepting sealed bids for a 1992 GMC Dump Truck, Diamond Snow Plow, 8'6" and a new Monroe Tail Gate Cinder Spreader. Truck, is 12,000 gross weight - 6.2 Liter Engine - 80,000 miles. Truck, snow plow and cinder spreader will be sold "as is". bids will be received until 12:00 Noon on Friday, November 3, 2000. Bids will be opened and read by the Supervisors on Friday, November 3, 2000 at 12:00 Noon and awarded at the Regular Meeting of the Supervisors to be held on Monday, November 6, 2000 beginning at 7:30 PM.

Inspections may be made by contacting the township office on Tuesday thru Thursday 7:30 am - 4:00 pm by calling (717) 529-2570. Bids must be on form supplied by the Township. Contact the office at 1803 Kirkwood Pike, Kirkwood, PA 17536 for a complete set of bid and instructions.

The municipality reserves the right to reject any or all proposals.

COLERAIN TOWNSHIP BD. OF SUPVS.

Carlton P. Groff, Chm. Martha M. Kepler, Sec



**1989 Trailer**  
38,000 GVW, Air Brake, Pintal Hook, 20 ft. Metal Deck, 5 ft. Beaver, Needs Paint  
**\$2,900**  
**717-486-8508**



**717-774-5590**  
300 6 cyl., 4 Spd., PS, PB, Some Rust But Runs Great! \$1250. Hurry!  
**Double -D - Auto's 717-774-5590**  
York County



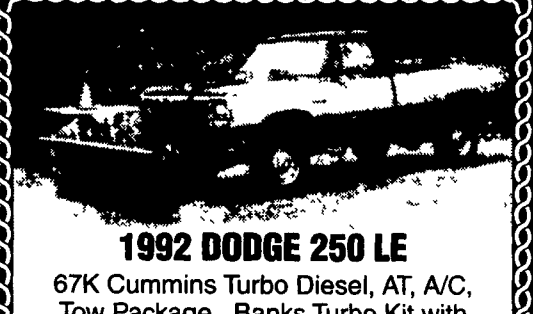
**'87 PETERBILT**, Rebuilt 8.3 Cummins, 210 HP, 6 Spd., 29,700 GVW, Good Condition - **\$8,900 OBO**  
**(717) 626-1394**



**1978 Autocar Manure Truck. Inspected, 3800 Gal. Tank. Priced at \$11,000**  
**717/626-8191**



1992 GMC Topkick LoPro, 23,900 lb., GVW, 24 ft. Morgan Box, 366 V8, 4-Spd. Allison, AT, A/C, 140,000 Miles, New Brakes and Tires, Runs Excellent, Looks Good. **\*10,900**  
**717-361-9296**



**1992 DODGE 250 LE**  
67K Cummins Turbo Diesel, AT, A/C, Tow Package, Banks Turbo Kit with 3" Exhausts, Brand New 8 1/2 Foot Western Pro Plow **\$16,800**  
**845-355-6800**

**Providence**

Chrysler • Plymouth • Dodge • Jeep  
Part of the Lancaster County Motors Family of Dealerships

**NEW 2001 DODGE RAM REG CAB 2500 SLT 4x4**  
Cummins Turbo Diesel auto trailer tow engine block heater fog lamps bedliner #10889  
**MSRP: \$33,950**  
-\$3,850 Providence Disc, -\$1,000 Factory Rebate, -\$500 Farm Bureau Rebate  
**NOW \$28,600!**

**NEW 2001 DODGE RAM 2500 QUAD CAB SLT 4x4**  
Cummins Turbo Diesel sport pkg auto trailer tow camper special #10659  
**MSRP: \$36,800**  
-\$4,150 Providence Discount, -\$1,000 Factory Rebate, -\$500 Farm Bureau Rebate  
**NOW ONLY \$31,150!**

**NEW 2001 DODGE RAM CLUB CAB ST 4x4**  
Automatic A/C tilt cruise rear slider bedliner much more! #10556  
**WAS \$26,295. NOW \$20,961! YOU SAVE \$5,334!**

**PRE-OWNED SPOTLIGHT!**  
'98 Dodge RAM QUAD CAB SLT 4x4 Black sport model Cummins Turbo Diesel  
**'97 Dodge RAM CLUB CAB SLT 4x4 White Cummins Turbo Diesel**  
**NOW ONLY \$28,250! NOW ONLY \$25,950!**

**SALES MON-FRI: 9AM-9PM SATURDAY 9AM-4PM**  
**Call Toll-Free 877-288-9996 or Phone 284-9900**  
804 Lancaster Pike, Quarryville Rt. 272, Just South of Lancaster  
[www.providenceautos.com](http://www.providenceautos.com)  
e-mail: [Vehicles@lannews.infi.net](mailto:Vehicles@lannews.infi.net)



**1997 DODGE SLT 3500**  
Dual Wheel Club Cab, 4x4, 5.9 Cummins Turbo Diesel, Auto, PS, PB, PW, PDL, Cruise, Tilt, Air, AM-FM Cass, New Radials, 93,000 Miles, Black, Ex. Cond..... **\$19,900**  
**A & J AUTO SALES**  
798 E. Main St., Rt. 322 East Ephrata, PA 17522 **717-733-2873**

**YORK MACK YORK GMC TRUCK**  
55 S FAYETTE ST YORK, PA 17404-0833  
**(717) 792-2636 - 800-930-2636**  
JOHN BRANT

**1990 IVECO**  
16' Refrigerated Body, Diesel, 5 Speed **\$4,900**  
**Just Traded**

**85 MACK RWS 788 LST**  
350 HP, 10 Speed, 60" Sleeper, Air Ride, Alum Wheels

**WM. COHEN & SONS, INC.**  
**"THE TRUCK PARTS STORE"**  
HEAVY DUTY TRUCK PARTS - NEW & USED - REBUILT REARS & TRANSMISSIONS  
**(610) 269-1298 Fax (610) 269-0787** [www.cohentruckparts.com](http://www.cohentruckparts.com)

**11.1 60 series Detroit engines**  
**12.7 60 series Detroit engines**  
**8.2 non-turbo Detroit engines**

**1985 Mack Superliner**  
V8 Mack 4 Valve Engine, 7 Spd Trans, Mack Rears on Camelback Suspension, 11x24 5 Tires On Aluminum Budds

**Ingersoll Rand Air Compressor,**  
Type 30, 15 HP 3 Phase

**1994 Isuzu Model NRR**  
6 Cylinder, Auto, 1400 Aluminum Tank with Pump, 13,250 GVW, 17,438 Miles

**Forklifts For Sale**

**Hyster 2,000 lb capacity, 3 wheeler, propane gas, solid tires, 92" fork height, 48" forks**

**Towmotor 4,000 lb capacity, 2 stage mast, 108" fork height, 42" forks, solid tires**

**Towmotor 2,000 lb capacity, 106" fork height, 42" forks, solid tires**

**200 Gal. & 550 Gal. Plastic Tanks For Sale**

**12' Reefer Body,**  
under body refrigeration unit, Uses 220 electric. Has damage.

**Michigan Loader Model L30**  
Quick Coupler. Comes With 1 Yard Bucket and 60" Forks, Runs Excellent

**4 I-Beams,**  
49' Long, 28" High w/12-1/2" Web

**Clark Crane, 14 Ton Capacity**  
4-53 Detroit, 60' boom, 14.00x24 tires, runs good, serial #720

**1992 GMC Topkick LoPro, 23,900 lb., GVW, 24 ft. Morgan Box, 366 V8, 4-Spd. Allison, AT, A/C, 140,000 Miles, New Brakes and Tires, Runs Excellent, Looks Good. \*10,900**  
**717-361-9296**

**1992 Dodge 250 LE**  
67K Cummins Turbo Diesel, AT, A/C, Tow Package, Banks Turbo Kit with 3" Exhausts, Brand New 8 1/2 Foot Western Pro Plow **\$16,800**  
**845-355-6800**

**Aluminum Tanker/Trailers**  
7500 gal. and up

**(9) 40' - 45' 1970's & Newer Steel Flatbed Trailers** (also have drop check trailers) some have sliding tandems, all in good condition **\$2,500/Ea. and Up**

**91 Isuzu NPR, 4 cyl. turbo-diesel, auto, 14' reefer body, 110 electric, 195,969 mi**

**94 IH Model 4900**  
DT466 engine, 5 spd, single rear, air brakes, A/C, 32,900 GVW, double frame, 11x22 5 Budds, 254" WB

**New Flatbeds Available**  
Sizes currently available are 12', 14', 20', 22' and 24' Racks are also available