

J.L. HOLLINGER & SONS

Construction Equipment Sales

Manheim, PA 17545

717-664-2444

717-664-2637 after 6 p.m.



'88 Cat 963 LGP
EROPS, GP Bucket,
Very Good Cond.
\$56,000



'90 Case 455C
Crawler Loader, ROPS,
Very Good Cond.
\$16,000



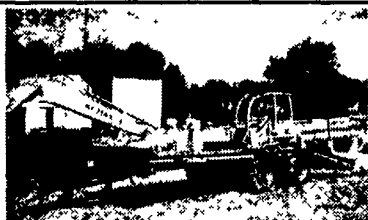
'88 Cat IT 28B
EROPS, w/Air Coupler,
GP Bucket, Very Good
\$36,000



'95 Hyundai 130LC
Robotex Long Stick, Thumb
Very Good
\$23,500



'94 Cat IT 18F
4000 Hrs., Coupler Bucket &
Fork, Radial Rubber
\$43,000



**Centreville 10-Ton
Tag-a-Long Trailer**
Air Brakes
\$3,200



'96 John Deere 648G
Cab, Air, Winch & Grapple,
New Rubber
\$60,000



'89 JD 555G
EROPS, GP Bucket,
w/Backhoe Att.
\$29,500



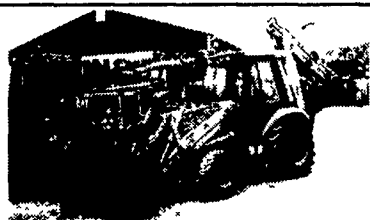
'90 Gehl GX 10
Excavator w/Blade,
Rubber Tracks
\$6,500



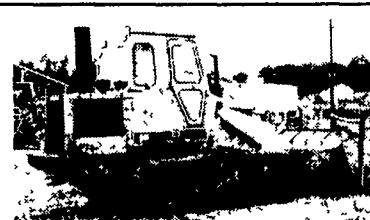
'84 John Deere 655
Crawler Loader, ROPS,
4-in-1 Bucket, Fair Cond.
\$16,500



'95 John Deere 310D
Turbo, 2WD, Cab, 4-in-1
Bucket, Standard Hoe,
Low Hrs., County Owned
\$24,000



'89 Case 580K
Cab, 4x4, Ext. Hoe, 4500 Hrs.
\$19,000



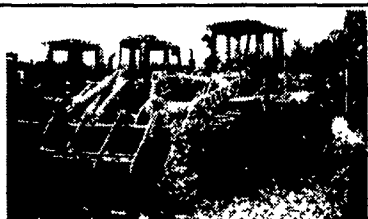
'88 Cat 953 LGP
EROPS, GP Bucket,
Very Good
\$39,500



'94 Cat 325L
5000 Hrs., Med. Stick,
Air, Very Good
\$69,500



'96 John Deere 310D
Turbo, Cab, 4x4, Ext. Hoe,
4-in-1 Bucket
\$33,500



'96 John Deere 544G
Cab w/Air, 3rd Valve,
GP Bucket
\$65,000



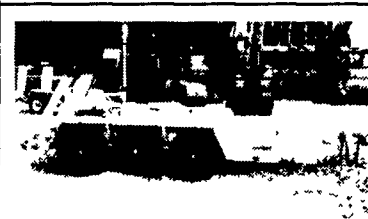
'89 Komatsu PC150 LC-3
1 Owner, Low Hrs., Aux. Hyd
\$37,500



'87 Case 580 Super E
4WD, EROPS, Ext. Hoe
\$18,000



**Beck Tandem Axle
Skid Loader Trailer**
\$2,100



**Beck 3-Axle
Skid Loader Trailer**
\$2,300



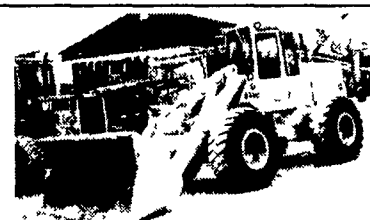
'87 John Deere 555B
ROPS, 4-in-1 Bucket,
Very Good
\$16,500



'95 Case 650G
2800 Hrs., ROPS, 6-Way Blade,
Very Good
\$35,000



'83 Case 850C
ROPS, 6-Way Blade w/Ripper
\$16,500



'85 JD 644C
EROPS, GP Bucket, Coupler
\$25,000



Marklift 62 Manlift
w/Gas Engine & 4WD
\$10,500



'86 Cat D25C Haul Truck
4x4, 25 Ton, Tires @70%
\$46,500



'86 Cat 953 LGP
EROPS, GP Bucket,
Very Clean
\$34,500



'94 Case 1840
Dsl., Aux. Hyd., Coupler,
Low Hrs.
\$10,900



'96 Case 580 Super L
4x4 Ext. Hoe, 2500 Hrs.,
Very Good
\$29,000



'89 John Deere 643
Feller Buncher, w/Shear Head,
Rebuilt Engine, Tires @ 90%
w/Chains, Very Good
\$35,000



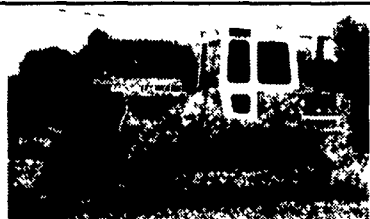
'86 Cat 980C
EROPS, GP Bucket, B.O.C.E.,
L5 Rubber @ 60%
\$60,000



'98 Takeuchi TB020
Rubber Tracks, Front Blade,
Very Good Cond.
\$12,000



'85 Ford 5610
w/Tiger Interstater Mowers,
Dsl.
\$9,500



'88 Liebherr 631B
EROPS, GP Bucket, 6,000 Hrs.
80% Undercarriage
\$23,500



'95 John Deere 755B
ROPS, Ripper, New Engine
\$37,500



'94 Cat 320L
Long Stick, 42" Bucket
\$45,000



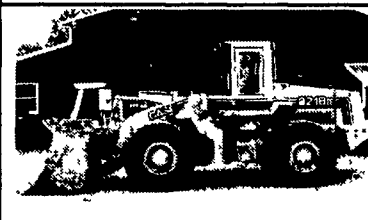
'94 Case 550E
ROPS, 6-Way Blade, Rental
Return, Very Good, Long Track
\$28,000



'80 Cat D6D
ROPS, S/T Blade,
Very Good Cond.
\$36,000



'90 Cat D7H-II
ROPS, S/T Blade, w/Cat Model
57 Winch, Very Good
\$69,500



'94 Case 821B
EROPS, GP Bucket, 3rd Valve,
Very Good
\$59,000