

KILE Selects Sheep Breed Winners

(Continued from Page C3)

Stout owned the grand champion ewe. Reserve champion was owned by Midnight Merinos of Pleasant Valley, N.Y.

Hampshires

Hope's Hampshires's, Knoxville, Md., received several awards from the Hampshire Breeding Sheep Show at KILE.

The farm also received premier breeder and exhibitor of the show.

In the ram classes, grand champion was Hope 00-15-NNP-TW of Hope's Hampshires. Reserve went to Fought 9207 pf Sulfur Run Farm, Carlisle.

In the ewe classes, grand champion sale ewe was Lytle 00-966-AI-NNP of Lytle's Hampshires, New London. Reserve champion was Fleener 9909 TW owned by Tim and Sarah Fleener of Robesonia. Lytle's Hampshires received grand champion recognition with Lytle 99-923-AI NNP TW. Reserve was Fought 993 pf Sulfur Run Farm, Carlisle.

Hope's Hampshires exhibited the exhibitor's flock.

Montadale

Salfner Montadales of Warwick, Md. walked away with the grand champion ram and grand champion ewe at KILE.

Grand champion ram was Alfner 1483-G-00 owned by Salfner Montadales. Reserve

champion was S Blair 173G, owned by Little Rest Farm of London, Ohio.

In the ewe and sale ewe classes, grand champion sale ewe and reserve sale ewe were given to Weston Farm of Gen Arm, Md. Grand champion was 661 and reserve was 665. Salfner 1424-G was named grand champion ewe owned by Salfner Montadales. 661 of Weston Farm received reserve.

Premier breeder and exhibitor was Salfner Montadales.

Oxford

Stacey Johnson of Minerva, Ohio, won the Oxford breeding sheep champion ram, showing Johnson 509 at KILE.

Everett Oxfords of Upper Blaer Eddy won reserve with Everett 9935.

Champion ewe was awarded to Everett Oxfords, exhibiting Everett 9918. They also won reserve with Everett 0038.

Stacey Johnson of Minerva, Ohio, took premier exhibitor with Johnson 507. And premier breeder went to Everett Oxfords, with Everett 0038.

Rambouillet

Powell Rambouillets of Rome, won the Rambouillet breeding sheep champion ram, reserve champion ram, champion ewe, reserve champion ewe, premier exhibitor, and premier breeder at KILE.

Shropshire

Shropshire Breeding Sheep Show was conducted at KILE.

Grand champion ram was owned by Bryant Shrops of Fredericktown, Ohio. Reserve was WS 2005 owned by Wey Shropshires, Bernville.

In the ewe division, grand champion sale ewe was 9925, owned by JL&GL Diehl of Deerfield, Ohio. Marci Estock of Louisville, Ohio, won reserve sale ewe.

Tel Farms of Bunker Hill, W. Va. won grand champion ewe with Lefevre 0007 NNP. Reserve was Ewe Brigich JL 99-08.

Premier breeder and exhibitor was Wey Shropshires, Bernville. Exhibitor's flock went to Wey Shropshires.

Southdown

Southdown Breeding Sheep Show was conducted on Oct. 6 at KILE.

Grand champion ram was Duron Howard 0026, owned by Bill George Leib of Mechanicsburg. Reserve honors went to Trostle's Livestock of Red Lion, with her spring ram lamb.

Grand champion sale ewe was Choma 0013, owned by Claudette Choma of Stafford Springs, Ct. Reserve sale ewe was MHS 9909 of the Milton Hershey School, Hershey.

Grand champion ewe was Choma 9920, owned by Claudette Choma. Reserve went to Duron Howard 0152 from the Bill George Lieb Farm.

Premier breeder and exhibitor awards went to Claudette Choma who also won exhibitor's flock.

Suffolk

Breezeview Farm of Altgen, received grand champion ram honors with their spring ram lamb Breezeview 8. Reserve went to Spinning Acres of Middletown, Ohio, with their 1-year-old ram.

Grand champion sale ewe was 578-99, owned by James Hefner of Lima, Ohio. Mitchell Estock of Louisville, Ohio, received reserve with 30.

Grand champion ewe was Pine Haven 00-1107, owned by Shane Conaway of Newville. Reserve grand champion ewe honors went to Breezeview 13.

Premier breeder and exhibitor awards went to Breezeview Farm of Atglen. Breezeview Farms also showed the exhibitor's flock.

Tunis

B-Bar Stock Farms of East Chatham, N.Y., has continued in their success this year at KILE.

After winning several champion awards at the Eastern States Exposition in Massachusetts, B-Bar Stock Farms continued their successful show season with several more champion Tunis and the receiving of the premier breeder and exhibitor awards.

In response to the award, Bob Bartholomew of B-Bar Stock said, "This has been a very successful show season for the farm this year. And this is the first time we have ever received premier breeder and exhibitor."

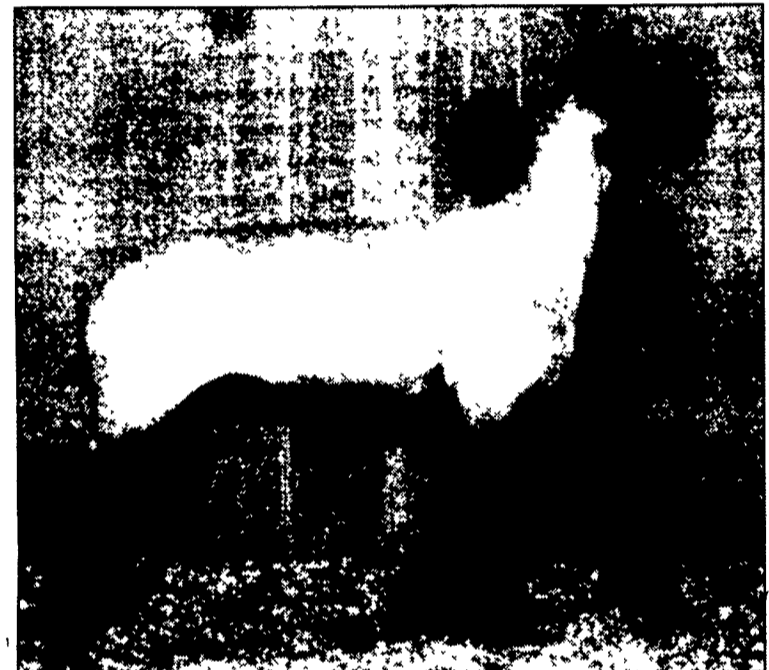
In the ram classes, Unzicker 86 of B-Bar Stock received grand champion. Reserve was Mayes 890 of B-Bar Stock Farm.

In the ewe classes, Knapp Time 85, owned by Cannon Knapp of York, N.Y., was selected champion. Reserve was Bartholomew 0001 owned by B-Bar Stock Farm.

Following is a list of show placings.



2000 Corriedale open breeding champion ewe, Ben and Mary Bow, exhibitors, Anville. From left, Ben, Melanie, and Mary Bow.



2000 Shropshire open breeding sheep grand champion ram, Bryant Shrops, Fredericktown, Ohio.



2000 Southdown breeding sheep champion ram, Bill George Leib, Mechanicsburg.



2000 Hampshire open breeding sheep reserve champion ewe, Robin Harkins.

KILE OPEN SHEEP SHOW RESULTS

- 2000 CHEVIOT - BREEDING SHEEP**
- Class 1-Ram one year and under two: 1. Lo-Ke Cheviots. 2. Scott Farms. 3. Lo-Ke Cheviots.
 - Class 3-Ram spring lamb: 1. Lo-Ke Cheviots. 2. Scott Farms. 3. Erdenheim Farm.
 - Class 5-Pair of ram lambs: 1. Lo-Ke Cheviots. 2. Scott Farms. 3. Erdenheim Farm.
 - Class 6-Champion ram: Lo-Ke Cheviots.
 - Class 7-Reserve champion ram: Lo-Ke Cheviots.
 - Class 9-Ewe one year and under two: 1. Erdenheim Farm. 2. Lo-Ke Cheviots. 3. Erdenheim Farm.
 - Class 10-Pair of yearling ewes: 1. Erdenheim Farm. 2. Lo-Ke Cheviots. 3. Scott Farms.
 - Class 12-Fall lamb ewe: 1. Lo-Ke Cheviots.
 - Class 14-Early spring lamb ewe: 1. Lo-Ke Cheviots. 2. Lo-Ke Cheviots. 3. Erdenheim Farm.
 - Class 15-Late spring lamb ewe: 1. Lo-Ke Cheviots. 2. Erdenheim Farm. 3. White Birch Farm.
 - Class 16-Pair of ewe lambs: 1. Lo-Ke Cheviots. 2. Erdenheim Farm. 3. White Birch Farm.
 - Class 19-Champion ewe: Erdenheim Farm.
 - Class 20-Reserve champion ewe: Lo-Ke Cheviots.
 - Class 21-Exhibitor's flock: 1. Lo-Ke Cheviots. 2. Erdenheim Farm. 3. Scott Farms.
 - Class 22-Premier exhibitor: Lo-Ke Cheviots.
 - Class 23-Premier breeder: Lo-Ke Cheviots.
- 2000 COLUMBIA - BREEDING SHEEP**
- Class 31-One year and under two ram: 1. Knapp Time Farm. 2. Down Valley Farm. 3. Down Valley Farm.
 - Class 32-Fall lamb ram: 1. K&S Maplewood Acres. 2. Down Valley Farm. 3. Down Valley Farm.
 - Class 33-Spring lamb ram: 1. K&S Maplewood Acres. 2. Carpenter/Columbias. 3. Knapp Time Farm.
 - Class 35-Pair of ram lambs: 1. K&S Maplewood Acres. 2. Down Valley Farm. 3. Knapp Time Farm.
 - Class 36-Champion ram: Knapp Time Farm.
 - Class 37-Reserve champion ram: K&S Maplewood Acres.

- Class 39-One year and under two: 1. K&S Maplewood Acres. 2. Knapp Time Farm. 3. Carpenter/Columbias.
 - Class 40-Pair of yearling ewes: 1. K&S Maplewood Acres. 2. Knapp Time Farm. 3. Salfner Montadales.
 - Class 42-Fall lamb ewe: 1. Knapp Time Farm. 2. Down Valley Farm. 3. K&S Maplewood Acres.
 - Class 44-Early spring lamb ewe: 1. K&S Maplewood Acres. 2. Down Valley Farm. 3. K&S Maplewood Acres.
 - Class 45-Late spring lamb ewe: 1. Knapp Time Farm. 2. Down Valley Farm. 3. Hampson Farm.
 - Class 46-Pair of ewe lambs: 1. Knapp Time Farm. 2. K&S Maplewood Acres. 3. Down Valley Farm.
 - Class 49-Champion ewe: Knapp Time Farm.
 - Class 50-Reserve champion ewe: K&S Maplewood Acres.
 - Class 51-Exhibitor's flock: 1. K&S Maplewood Acres. 2. Knapp Time Farm. 3. Down Valley Farm.
 - Class 52-Premier exhibitor: K&S Maplewood Acres.
 - Class 53-Premier breeder: K&S Maplewood Acres.
- 2000 CORRIEDALE - BREEDING SHEEP**
- Class 61-One year and under two ram: 1. K&K Corriedales. 2. Limekiln Corriedales. 3. Joy-Lan Acres.
 - Class 62-Fall lamb ram: 1. Ruppert's Corriedale. 2. Apple Hill Farm. 3. Gerald Thoma.
 - Class 63-Spring lamb ram: 1. Ben and Mary Bow and Family. 2. K&K Corriedales. 3. Ben and Mary Bow and Family.
 - Class 65-Pair of ram lambs: 1. Ben and Mary Bow and Family. 2. Limekiln Corriedales. 3. K&K Corriedales.
 - Class 66-Champion ram: Ben and Mary Bow and Family.
 - Class 67-Reserve champion ram: Ruppert's Corriedale.
 - Class 68-Ewe one year and under two sale: 1. Balsam Spring Farm. 2. Balsam Spring Farm. 3. Gerald Thoma.
 - Class 69-One year and under two ewe: 1. Ben and Mary Bow and Family. 2. K&K Corriedales. 3. Ben and Mary Bow and Family.
 - Class 70-Pair of yearling ewes: 1. Ben and Mary Bow and Family. 2. K&K Corriedales. 3. Limekiln Corriedales.