

## Public Auction Register

Closing Date Monday 5:00 P.M.

of each week's publication

Internet Sale Register will be updated every Sat. at 2:23 P.M.

### ATTENTION Auctioneers

All sales register info needs complete address, street, town, county & state.

SAT OCT 14 - 9AM Tools, tractor, Bush Hog, JD riding mower, farm items, Ford Explorer, sailboat antiques, furniture At 1865 Shumaker Rd., Manheim, Rapho Twp Lanc Co, Pa For Loraine Nixon Shenk Auction Co AU-003704-L

SAT OCT 14 - 9AM William Weiss Estate Vehicles, Guns, Lumber, carpenter & mechanics tools 341 Schoolhouse Rd., S Londonberry Twp, Palmyra, Leb Co Pa By Cindy Skinner, executrix Harry H Bachman auct

SAT OCT 14 - 9AM Construction equipment, building supplies, office equipment, furniture & riding mower 94 Buckwalter Rd., E. East Coventry Twp, Chester Co By Christian N Lennbach Horning Farm Agency, Inc 610-286-5183

OCT 14 - 9AM - 2nd day auction of 3 generations of antiques at the Mt. Airy fire hall, 880 Durlach Rd., Stevens By Gilbert J. Paul, Aaron F. Martin Auction Service

SAT OCT 14 - 9:30AM Tractors, grain equip, combine, farm equip, cattle equip., tools & misc, trucks & cattle trailer At Beaver Fairgrounds in Beaver Springs, Pa Walnut Acres Organic Farm LLC Ken Smith AU-867-L

SAT OCT 14 - 9:30AM Annual Fall Auction used inventory reduction consignments welcome 5109 State Route 22 Salem New York Salem Farm Supply

SAT OCT 14 - 9:30AM Farm Equip Crops Woodworking Equip., HH Goods 100 Carlisle Rd Newville PA for Gerald & Emily Lehman by Martin's Auction Service

SAT OCT 14 - Real estate (2 separate tracts) brick rancher on 1/2 acre & 1 8 acre tract 128 Center Ave Terre Hill Personal property tools, furniture Rt 897 N to Terre Hill, turn left Main turn right Center By Paul A & Edna M Weber Kline, Kreider & Good, aucts

SAT OCT 14 - 8:30AM Modern ranch house, collectibles, firearms, furniture, vehicles, farm tractor, lawn tractor, misc tools Between Mandata and Red Cross on St Rt 225 Box 1456, Herndon, Pa Arthur "Art Hildegard Wetzel, owner Romber & Associates Aucts AU3719L, AU3702L, AA2661L

SAT OCT 14 - 8:30AM 2 1/2 story brick house, furniture, antiques, property 228 Doe Run Rd., Manheim, Pa For Edith Fahnestock John D Stouffer Auct

SAT OCT 14 - 9AM Municipal surplus & contractor equip auction, trucks, equip, P U S cars Erie Co Fairgrounds Rt 62, Hamburg, NY Roy Teitsworth, Inc auct

SAT OCT 14 - 9AM Farm machinery, tools & farm related, boat, lawn & garden, household items 8 mi N of Exit 14 of the PA

Tumpike Dorothy Briggs, owner J Randall Speer AU002027L & Mark Neil AU003699L

SAT OCT 14 - 9AM Antiques & collectibles, tractor & farm equip, tools, equip & guns, household items 4 miles N of Heginns and 3 miles S of Pitman Samuel & Anna M Klock, owners Mike Delbert auct AU-1599L

SAT OCT 14 - 9AM Tractors, trucks, trailers, tools, machinery Rt 42 between Catawissa, Pa & Numidia, Pa Marvin Bittner estate George J Henry AU-001528-L George R Henry, AU-003519-L

SAT OCT 14 - 9AM Real estate and household goods At 118 W Metzlers Rd., Ephrata By Phyllis L Homberger Robert E. Jeffrey R & Michael L Martin aucts AU000580L

SAT OCT 14 - 9AM West Fallowfield Christian School Country Auction West Side of Rt 41 in Atglen, Pa Leon Kurtz, Orpha Longenecker, Steve Petersheim & J Omar Stoltzfus, aucts

SAT OCT 14 - 9AM 565 W Swartzville Rd., Reinholds, Lanc Co Real estate, 4 1/2 acres, gun, Farmall Cub tractor, mechanic tools David Snyder Estate Art Pannebecker Auct Serv AU1476-L

SAT OCT 14 - 9AM Real Estate, Furniture, Household, Antiques Rte 655, One miles S of Allensville, PA Estate of Mrs G Elrose (Ruth A) Yoder Mark Glick Auctioneer AU-349-L

SAT OCT 14 - 9:30AM Reichs Ford Truck & Tractor at Frederick Fairgrounds, Frederick, Md J G Cochran, aucts

SAT OCT 14 9:30AM Farm machinery of Helen Feltenberger at Penns Valley Livestock, Centre Hall Mel Hoover & John Esh, aucts #AU2055L

## PUBLIC AUCTION

of  
**6 Parcel Real Estate**  
**Saturday, Nov. 4, 2000**  
**at 11:00 AM**

Located 1 mile north of Geigertown along Rt 82, Robeson Twp, Berks Co



**PARCEL #1:** 2-1/2 Sty Sandstone House: 1st Fl has eat-in kit w/cherry cabinets, 4 additional rms, 2 FP, and 1 BA. 2nd Fl has 4 BD, 2 w/FP, and 1BA, 1/2 Basement. Oil H/W baseboard heat.

**22'x40' in-ground pool, Hay Creek and lg spring fed pond, 3.8 Ac**

**5 Bldg Lots from 1.2 Ac. Partly wooded.**

**Open House:** Sat., Oct. 7th and 14th from 1-3 PM or anytime by appointment. Call auctioneers at (610) 286-5183.

**Terms:** 10% down day of sale; settlement within 45 days

**Terms By: FORREST CRAMP**



Merle Eberly AU-2417-L • Alvin Horning AU-0433-L

Elton Horning AU-0434-L

Route 23 Morgantown, PA 19543 (610) 286-5183

## 6 Acre Farmette PUBLIC AUCTION SAT., OCT. 21, 2000 12 PM



**101 Camp Strauss Road  
Fredericksburg, PA 17026  
Bethel Township, Lebanon County**

**DIRECTIONS:** 1 mile North of Fredericksburg on Mechanic Street, left on Mountain Road for 3 miles. Property at the intersection of Mountain Road and Camp Strauss Road, see signs.

**REAL ESTATE:** Consists of a 2-1/2 story frame 2072 sq. ft. farmhouse with wrap around porches, 4 bedrooms, bath, living room, dining room, kitchen, den. 32x48 bank barn, 26x36 implement shed, various other outbuildings, orchard, mature trees, fenced in meadow area. Beautiful country setting.

**INSPECTION** by calling Auctioneer.

**TERMS:** 10% down day of auction, balance due in 45 days at Final Settlement.

**OWNER:** Michael C. Deparolis

**ATTORNEY:** Nancy M. Vickers, Esquire

**AUCTION CONDUCTED BY:**  
**NELSON L. EBERSOLE AUCTIONEER**  
LICENSE # - AU-001307-L  
PHONE (717) 867-5221 FAX (717) 867-5606  
30 WEST MAIN STREET, ANNVILLE, PA 17003

## 3 ACRE M/L COUNTRY PROPERTY EAST EARL TOWNSHIP J.D. RIDING MOWER FURNITURE PUBLIC AUCTION

**Thurs., Oct. 19, 2000**  
**Auction Time 4:00 P.M.**  
**Real Estate 5:00 P.M.**

**DIRECTIONS:** 1.4 miles east of Blue Ball along Rt. 322, East Earl Township, Lancaster Co., PA.



## 4977 Division Highway, East Earl 2-1/2 STORY FRAME HOUSE

with a large eat-in kitchen with Kountry Kraft custom kitchen cabinets, with built-in oven, stove & refrigerator; living room; parlor; den with built-in cabinets; foyer with open stairway, pantry, laundry/mud room; bathroom on 1st floor **UPSTAIRS:** has 3 bedrooms plus a nursery, full bathroom, attic storage, electric baseboard heat, vinyl & alum siding, large porch, full basement

- \* Macadam driveway
- \* Well with new pump
- \* Public sewer
- \* Mature shade
- \* Vinyl tilt-in windows
- \* Maintenance free exterior

**LARGE GARAGE/SHOP:** Approx. 24'x36' with 2-car garage shop area could house horses, 2nd floor above garage, forebay, plus another 2-car garage with attached dog kennel

**John Deere 165 Hydro, Riding Mower w/Bagger**  
**FURNITURE:** 5 Spindle Back Chairs, 1-green 1-flowered LR Suite, 3 Ebersole Painted PB Chairs, Loveseat, Recliner, Rocker, Single Box Spring & Mattress lk new, Chest of Drawers, Patio Furniture, Pie Crust Table, Dropleaf Stand, End Table & Lamps, Mirrors. Be prompt, very few items to sell!

**APPLIANCES:** Whirlpool Washer & Dryer Set, Chest Freezer

**NOTE:** Lots of possibilities for this property with approx 220' of road frontage and over 900' deep Property is Zoned RL residential and is in good condition. **Room for horses.**

For appoint to see or help to obtain bank financing call Aaron E. Martin at (717) 733-3511

**TERMS:** 10% down payment at auction, balance at final settlement on or before December 1, 2000  
Attorney Linda Kling 354-4456

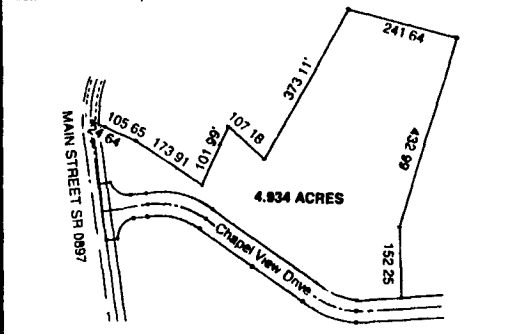
**Auction by**  
**IRENE M. RUTT**  
(717) 354-7185



410 West Church Rd., Ephrata, PA 17522  
(717) 733-3511

## 4.9 ACRE BUILDING LOT West Cocalico Township PUBLIC AUCTION SAT., OCT. 21, 2000 Auction Time 2:00 P.M.

**Directions:** From Denver take Ridge Road, turn left onto Route 897 then right onto Chapel View Dr to lot on left Lancaster Co., PA



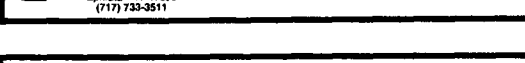
4.934 ACRE LOT would be great for location for horses OR lot has lots of road frontage and 2 sewer hookups available Great for single family, duplex, apartments or professional offices, check with the township concerning your needs. Would make a great large lot with privacy or could be subdivided Lot is zoned R-1 and has public water & sewer available

**LOT INSPECTION:** Sat, October 7, 1 00 PM. to 3 00 PM

**TERMS:** 15% down payment at auction, balance on or before December 30, 2000

Attorney Michael P Kane 299-5251

**Auction By**  
**DANIEL E. MARTIN**  
(717) 335-0386



410 West Church Rd, Ephrata PA 17522 (717) 733-3511

## "Horst Auctioneers" PUBLIC SALE

**OUTSTANDING 122 ACRE  
LANCASTER COUNTY FARM**

**Farm Equipment, Tools,  
Primitives, Household Goods**

**Rapho Township  
THURS., NOV. 2, 2000  
11:00 AM**

**REAL ESTATE AT 1 PM**  
(Sale To Start w/sm. Tools & Household Goods. Farm At 1 P.M. Followed Immediately By Farm Equipment.)

**Located at 1272 Auction Rd., Rapho Twp., Lancaster County, PA (adjacent To The Penn State Ag. Research Farm, Just Off Erisman Rd.)**

**122 ACRE LANCASTER COUNTY FARM  
w/GOOD SET OF BUILDINGS**

**LG. 2 1/2 STORY BRICK FARMHOUSE -**

**First Floor - Living Room; Dining Room; Family Room; Sm. Office; Lg. Eat-In Kitchen; Lg. Utility/Laundry Room w/Walk-In Fireplace & Full Bathroom. Second Floor Contains 5 Bedrooms & Full Bathroom. Automatic Coal Stoker Hot Water Furnace; 200 Amp Electric Service; Strong Well & Pressure System; 200 Amp Electric Service; 50'X80' BANK BARN (w/20'x24' Addition) Fenced-In Loafing Pen; 18'X50' ATTACHED 2 STORY CHICKEN HOUSE; (2) 10'X40' SILOS; 23'X36' CORN & IMPLEMENT BARN; 30'X40' IMPLEMENT BARN; 32'X60' TOBACCO SHED; 24'X40' BLOCK 4 CAR GARAGE; FARM SIZE - 122 TOTAL ACRES M/L; w/Chickies Creek; 108 TILLABLE ACRES (w/Nice Level Fields & Long Rows.) Approx. 10 acre Meadow (w/Denlinger Run) Buildings Are Set 3/10 Of A Mile Off Auction Rd. w/A Blacktop Lane Driveways and Parking Areas.**

**ZONED - Agriculture (Farm Has Been Placed In The Lancaster Farmland Trust.) Setting Between Manheim & Mount Joy. Be Sure To Inspect This Farm!**

**OPEN HOUSE - Saturday, October 14 & Saturday, October 21 From 1 P.M. To 3 P.M. Or Call (717) 665-4960 Or Auctioneers At (717) 738-3080.**

**FARM EQUIPMENT; TOOLS & PRIMITIVES; HOUSEHOLD GOODS**

**TERMS OF REAL ESTATE SALE - 10% down Payment Day of Sale, Settlement Between Jan. 1 & Feb. 28, 2001.**

**No Out Of State Checks Without Prior Approval. Young & Young, Atty.**

**Sale For:**  
**RICHARD K. & REBA M. METZLER**

**HORST AUCTS.**  
AU438L  
(717) 738-3080  
Fax # (717) 738-2132  
"VOICES OF EXPERIENCE"

T. Glenn Timothy G. Thomas A.

## Public Auction

**SATURDAY  
OCTOBER 21, 2000  
9:00 AM**

**ROY E. BLAUCH ESTATE**

**MACHINISTS TOOLS AND EQUIPMENT - GUNS**

**LOCATION:** 7040 Bates Drive, Annville, N. Annville Township, Lebanon Co., Pa From Rt 422 in Annville at traffic light - North 3 3 miles on Rt 934 - left .8 mile on Palmyra/Bellegrove Rd -right 1 mile on Steelstown Rd -bear left on Bates Drive and proceed 2 mile to auction site on left

Craftsman 12" x 36" metal lathe, Craftsman 16 spd drill press, Belsaw Sharpall, Rockwell-Delta sander/grinder, scroll saw, shaper, (5) elec drills, 15 & 18 drawer metal cabinets, Starrett machinists tools inc levels, gauges, micrometers, indicators, etc., pipe threader, vise, 1/4 to 3/4 socket sets, lathe attachments, cutters, chucks, dogs, tools, milling pcs, etc., lots of drill bits, Estwing hammers, wood lathe turning tools, Jacobs drill chucks, clamps, letter & number sets, reamers, lots of tap & die sets, grinding & wire brush wheels, Vernier height gauge w/case, depth, drill, wire & screw gauges, protractors; carpenters caliper rule, sliding T bevel, low angle block plane, 59 pc. metric tap & die set, 6" dial calipers, wrench sets, gear puller, Snap On, Miller Falls, Crescent, Bonney, S-K hand tools etc., machinists magazines; lathe books, tool books, hand grinder, lawnmower manuals, wooden H&R boker plane; Sargent plane, old tools, Red Chief corn sheller and many other unlisted items **NOTE: Nice, clean items.**

**GUNS - 12 00 model 37A Win 20 ga single shot, Windsor 16 ga double barrel-take-down-new in box (with reserve), model 60 Marlin 22 semi auto w/scope, 12 ga Iver Johnson single shot, model 88 H&R Topper 12 ga. single shot, AMMO-Win Leader, Win Western, Western, Rem Peters, Sears, Bulls Eye air shot, Game News; '49 license; Bushnell binoculars, match holder w/compass, Bear glass powered 64" 58# bow, arrows, Swenson snow shoes and other items**

**TERMS:** Cash or good local check Auction beginning with box lots Real clean items Roy took good care of his tools Guns and large equipment to be sold at 12 00 noon Toilet facilities Food by Bellegrove Fire Company Inspection of items after 7:00 auction day only Plenty of off street parking

**Auction by Executrices**  
**NORENE SHUEY and**  
**CAROLINE WAGNER**

**HARRY H. BACHMAN**  
AU 0000311 AUCTIONEER  
2051 HORSESHOE PIKE  
ANNVILLE, PA 17003-8850  
(717) 867-1809

