

## Public Auction Register

Closing Date Monday 5:00 P.M.  
of each week's publication

SAT OCT 7-9AM Knebel Farm Auction, 18C to present operation will be sold to the bare walls Knebel Mill Rd., Hereford, Berks Co., Pa Barry Hurchalla, auct AU-1902-L

SAT OCT 7-9AM Antique, Carnival glass, hit & miss engine parts, tools, furniture At 2609 Tunnel Hill Rd., Lebanon By Virginia Blouch Nelson L. Ebersole, auct AU-001307-L

SAT OCT 7-10AM Automotive transmission service business equip Formally Norm's Trans mission Service, 10 Walnut St Scranton, Pa Col Steve Sitar & Co Auct AU2124-L

SAT OCT 7-10AM Train truck, farm toys Elizabethville Banquet Center, 290 W Broad St, Elizabethville, Pa Arthur "Art Hildegard Wetzek, owner Romberger aucts AU3719L, AU3702L, AA2661L

SAT OCT 7-10AM Cowboy and Western Memorabilia, Miller's Auction Center, Bethel, Pa Dwight D Miller AU-2414-L, Dave Ebersole AU-0246-L

SAT OCT 7-10AM In the blue room Final Northeast Hobby Shop liquidation auction & in the pavilion 600 lots of electric trains At The Ridge Fire Co along Rt 23 between Rt 100 & Phoenixville, Pa Ted Maurer, auct AU-000593-L

SAT OCT 7-10AM Machine shop equip 2063 Bustleton Rd., Burlington, NJ Allen's Auction Service

SAT OCT 7-10AM Heifer Sale New Holland Sales Stables, 101 W Fulton St., New Holland, Pa

SAT OCT 7-1030AM Dozer, tractors, tools, bid supplies Bradford, Steuben Co., NY Rich Machuga, owner Pirrung Auct

SAT OCT 7-11AM Dairy Herd Dispersal, Tyler Hill, Wayne Co John Swendsen, owner Wayne Weaver, auct 984-L

SAT OCT 7-12 Noon Bakery Equip Auction, Troutman's Bakery, Millersburg, Pa Mark Baranowski, auct

SAT OCT 7-7 PM Belknap Livestock Auction Dayton, Pa Fall Feeder Cattle Sale Belknap Livestock Auction Inc Kevin Hines AU2549-L, Chris Rowe AU2551L

SAT OCT 7 & SAT OCT 14-9AM Brucklacher Estate Auction, real estate blacksmith items, antiques, collectibles and household items 60 Academy Rd., cogan Station, Pa Arthur Auct AU-001752-L

SAT OCT 7 & SAT OCT 14-8AM Estate of Martha Rosenberger Old original Oliver dealer store stock, furniture, antiques & collectible, dishes, tools, farm equip, manuals & books, pedal car On Site at 123 S Baltimore St in Dillsburg, Pa Shirley I Krader, executrix Little like Eichelberger auct AU-001954-L

SUN OCT 8-10AM Antiques, guns, sleighs, collectables, tools, coins At 536 Walnut St., Howard, Pa Centre Co Ron J & Ron S Gilligan AU339L & AU3430L

OCT 8, 14, 15, 21, 22, 28, 29 & NOV 15-10AM Each Eight Day Auction Ed Hart's Gun Supply and Sporting Goods Store Bath, Steuben Co., NY Owned by Edwin L. Hart Enterprises, Inc Pirrung Aucts AY-000205-L

MON OCT 9-830AM Antique cars and parts auction, George H Knick Jr Estate, 816 Lincoln St., Duncannon, Pa Cindy Fendon AU-0003412-L, RC Auctin Co AY-000238-L

MON OCT 9-9AM Fine china & glassware, furniture, primitives in Cumberland Co at the Carlisle Eagle's Club picnic grounds, Wolf Bridge Rd., Carlisle, Pa Fahnestock's Auction Service AU-2553-L

MON OCT 9-9AM Tools & sporting equip 38 Blunston Lane, Hellam, Pa Beulah Heidelbaugh, seller Blaine Rentzel AU#761, Todd Hatterer AU3440, Dave Conely AU#3269, aucts

MON OCT 9-1200 Collection of toy farm equip At Murry Auction Emponum, 23 N Water St, Lutz, Pa Elmer Murry Auct AU648L

MON OCT 9-6PM Coin Collection at Springetts Fire Co Social Hall, 3013 E Market St., York, Pa Gilbert & Gilbert Aucts #336, #2256

TUES OCT 10-9AM Tractors, hay equip, vehicles, tools Estate of James K Hooper White Oak School Rd., Shrewsbury, Pa York Co Rentzel's Auction Service AU#761, AU#3269

TUES OCT 10-10AM Oriental rugs, plywood, carpet, cabinets, 87 Chevy Astor van, tools, paint, restaurant & office equip, doors, windows, tile, etc 1825 E Boston Ave., Philadelphia, Pa Wm F Conly & Son, Inc

TUES OCT 10-1130AM Spirit-Maple Holsteins complete milking herd & select breed heifer dispersal At Kling's Sale Barn, 15 miles N of Carlisle, on Rt 74 at Landisburg, Pa Timothy & Karen Kauffman, owners Kling's Auctions, Inc Pa Lic #00500

TUES OCT 10-12 Noon, Farm & shop equip 137 Penn Nursery Rd., Rt 322 Potters Mills, Centre Co Ziegler Auction Co #2120-L

TUES OCT 10-430PM Freight Auction, at Cross Keys Auction Center one mile N of Duyncansville, Pa Office Furniture Col KR Miller, Jr Auct AU000613L

TUES OCT 10-745 PM Feeder Cattle Sale Westminster Livestock Auction

WED OCT 11-10AM For the estate of Barbara and Jack Bowman, 374 Gerloff Rd., Limerick Kathy Maurer Auct AU003006-L

WED OCT 11-1PM Antiques & Collectibles, tobacco & cigarette tins At the Beaver Fairgrounds, Beaver Springs, Pa Kenneth E Hassinger AU-001532-L & Neil A Courtney AU-002651-L

WED OCT 11-1PM Real Estate on 45+ Acres, 10114 Great Cove Road, near Needmore, PA J.G. Cochran Auct

WED OCT 11-2PM Antiques, household goods, collectibles, clocks, music boxes & tools held at Horst Auction Center, at the corner of Rt 322 & Durlach Rd., Ephrata, Lanc Co., Pa Horst Aucts

WED OCT 11-230PM Brad Smith Auction Co for Grace A & Larry Smith 5 miles S of Red Lion along Rt 74 Brad & Pat Smith aucts RY10-L

## PUBLIC AUCTION Sat., November 4, 2000 at 9:00 a.m.

Located in Washington Township, Northumberland County, from Harrisburg travel 40 miles North on Route 147 to Route 225 North. Go 3 miles North on 225 turning at Red Cross Road. Go 1-1/2 miles turn right onto Rebeck Farm Road. Go 2 miles on Rebeck Farm Road to auction site. Watch for auction signs.

### REAL ESTATE - 98 Acre Farm

Located in Washington Township, Northumberland County, consisting of 98 acres, more or less, with 52 acres tillable. There is a 2 story farm house, bank barn & other outbuildings. Home has well & septic. If you are looking for a farm, inspect this one, arrange your financing & plan to buy on auction day.

TERMS: 10% down day of auction & balance within 45 days. Real Estate to be offered at 12:00 noon. For showing of Real estate contact 570-758-4951.

Owner: SARAH BORKOSKI and The Late Robert Borkoski

AUCTIONEERS:  
Roger A. Lauver Dean E. Longacre  
#AU-002634-L  
R.R. #3, Box 196-C  
Selinsgrove, PA 17870  
(570) 374-3793

Owner and Auctioneers Not Responsible For Accidents.

## PUBLIC AUCTION JOHN M. HESS AUCTION SERVICE, INC. ANTIQUES AND HOUSEHOLD GOODS

located at Wolgemuth Auction Center, 109 N. Maple Ave., Leola, PA

MON., OCT. 16, 2000 3:00 P.M.

APPLIANCES: New side-by-side refrigerator, wall mounted oven, microwave, used washer and dryer, two (2) refrigerators, air conditioner.

FURNITURE: Two (2) oak dressers, blanket chest, washstand, queen brass bed, queen box spring and mattress, clothes tree, plank bottom rockers, child's rocker, small end tables, plant stands, small school desk, like-new oak kitchen table and four (4) chairs, bookcases, nice sofa, many more items too numerous to mention!

HOUSEHOLD ITEMS & ANTIQUES: Sixteen (16) early noidders, including Orioles, Steelers, Browns, Baltimore Colts, Eagles; Pillsbury cookie jar with salt and pepper and canister, rare Sprout cookie jar and salt/pepper, early Little Golden books, Fire king, including jadeite and carnival, Depression glass, mixing bowls, hook rugs, large peanut butter glasses, McCoy cookie jar, cake plate, marbles, post cards, nesting chickens, eight (8) neon beer lights and other beer advertising trays and signs, linens, chenille bedspread, ship clock, cuckoo clock, iris glass, silver plate flatware, Lancaster Co. milk bottles, many crocks and jugs, sheet music, black amethyst, motion light clock, fishing rods, electric roaster, Hubley items, including Hubley models and tractor, Lefton Christmas holly pattern, Fiesta casserole dish, Smith glass, miscellaneous small hand tools, Funks tin corn signs, many more items!

OVER 100 BOX LOTS SOLD AT 3:00 PM!! AUCTIONEER'S NOTE AND TERMS: This is only a partial listing. Consignments welcome - please call soon! Cash, good PA checks, or auctioneer approved out-of-state checks only! For more details and pictures, see our Website at [www.hess-auction.com](http://www.hess-auction.com)

JOHN AU-003484-L  
DENNIS & BOB WOLGEMUTH  
**John M. Hess**  
AUCTION SERVICE INC

WOLGEMUTH AUCTION (#2357)  
Call John  
AUCTION HOUSE 717-656-2947

## ESTATE AUCTION REAL ESTATE & MACHINE SHOP

527 Almonesson Rd., Almonesson N.J.

Directions: Rt. 42 Three-Miles East of Walt Whitman Bridge Almonesson Exit. Left at Dead End Stop, and Then Right at Light (Almonesson Road). Property 100 Yards On Right.

SATURDAY, OCTOBER 21st 9:00 A.M.

### MACHINE SHOP TOOLS

Bridgeport, Cincinnati, Rosenfors Milling Machines, Hipromac, TOS - Trenching, Clousing Lathes, Sanford, Brown and Sharpe, Porter Surface Grinders, Walker Turner, Boice Crane, Cimaf, Delta Rockwell Tabletop and Floor Model Drill Presses, Leonard Grind, Delta, Black Diamond Grinders, Gilbarco 200 lb. Compressor, Ercolite A.C. Welder, Portamatic Air Lift, Veit and Young Tapping Machine, Vices, Precision Gages, Press and Young Sheet Metal Punch, Belt Sanders, Cooling Tanks, Metal Dust Collectors, Plus Hundreds and Hundreds of Accessories, Tools etc. This is a must for the shop owner!

Auction Note: All Tools and Machinery are in Immaculate Condition.

AUTO: 1987 BUICK GRAND NATIONAL LIMITED EDITION BLACK ON BLACK 3.8 LITER TURBO 6K ORIGINAL MILES

10% Buyers Premium

**RON RHOADS**  
AUCTIONEER  
DOUGLASSVILLE, PA  
610-385-4818  
WEB: [www.echant.com](http://www.echant.com)

Eileen Rhoads  
AU003750L

Ron Rhoads  
AU002045L

## PUBLIC AUCTION SAT., OCT. 21, 2000 9:30 AM

Machine Lathes, Overhead Manual Cranes, Strag-Mill Sawmill, Hours of New Nuts, Bolts, Pins, Breakers, Air & Hyd. Hoses, Tools, Salvage, Scrap, Floor Model Tools

Ron Gilligan & Son Auctioneering will conduct a public auction for Mr. Mark Jovich, located along Rt. 322 Clearfield, Pa. (From State College take Rt. 322 W and go past Clearfield Mall on right and continue under overpass. Auction on right at old Harbison Walker bldgs.) For sale will be the following:

Warner & Swasey Torque Lathe M-470 w/new 16" 4 Jaw Head, Monarch Production Lathe w/new 16" Head, Lincoln 3 Phase Ideal Arc CV-300 Wire Feed Welder (Nice), Lrg. Comm. Punch Press 3 Phase w/Tooling Punches, Lrg. Overhead Manual Crane, 4 Ton Overhead Crane, 2 Lrg. 440 Elec. Hanging Winches, Aircro 3 Phase Welder, Champer Machine For Pallets, Floor Mod. Drill Presses, Brudi Hyd. Fork Lift Attach., Hyd. Forklift Barrel Lift Attach. Niagara 4' Elec. Shear, 2-140 HP Multi Purpose Diesel Motors w/Clutches, Table Saw, Milwaukee Boring Machine (As Is).... Strag-Mill Sawmill w/Live Deck Can Be Converted To Gas - Run w/ 2-20 HP Elec. Motors (Works Good)

1988 Chevrolet Camaro V-6 5 Spd Trans. - Red - Approx. 65,000 Miles, New SS Airlines, Hyd. Hoses & Air Hoses, Hundreds and Hundreds Of Boxes Of Nuts, Bolts, Brackets, Washers, Pins, Elec. Items, 90 AMP Breakers, Springs, Pulleys, Truck Parts, Valve Stems, Switch Boxes, Pipe Hangers, Cases of Solder, Saw Blades, File Cabinets, Lots of Steel Shelving, Port. Engine Lift, Little Giant #67 1/2 Tap & Die Set, New Cyl. Kits For Wisconsin 4 Cyl. Eng., 3 Pt. Hitch Arms, 10", 13", 15" Forklift Intertubes, Air Gauges, Oil gauges, Porta-Power, Buckets of Cable Clamps, Lots of Metal Cabinets, Lrg. Rolls of Cable, Conduit, Iron Grates, Iron Steps, Skids of Bricks, Numerous Gear Boxes - 5 HP Etc. Many Many 3 Phase Motor From 2 HP to 150 HP, 3 Phase 220 Starters, 5 HP Gear Boxes, S. Steel Lift Cables, Gear Reducers, Shaker Screens, Rail R. Ties, Belt Conveyor, Sm. Conveyor, Plus Many Other Items Too Numerous To Mention. This is a Brief Listing as it will be a Full Day Auction.

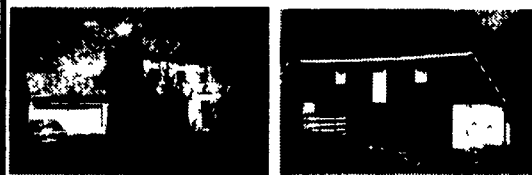
Terms: Cash or Check - Day Of Auction  
Auction By: MR. MARK JOVICH 814-857-7584

AUCTIONEERS:  
RON J. & RON S. GILLIGAN  
#AU339-L & #AU3430-L

Food & Job Johnny Available - Tents If Needed  
Owner or Auctioneer Not Responsible in Case of Accident.  
All Oral Info Day of Auction  
Takes Precedence Over All Written Ads

## PUBLIC AUCTION VALUABLE REAL ESTATE 44 ACRE FARM - CUSTOM BUILT 4 BDRM. DWL. WARWICK TWP. - LOG CABIN RD. WED., NOV. 1, 2000 1 PM

LOCATION: 1015 Log Cabin Rd From Akron take Rt. 272 South turn right onto Rose Hill Rd turn left onto Log Cabin Rd cross covered bridge to property on right, Warwick Twp., Lanc Co



Real Estate consists of custom built "one owner" 2 story alum sided 4 bdrm 2 1/2 bath house w/country eat-in kitchen w/ cherry raised panel cabinets, adjoining family room w/stone fireplace, formal dining rm., living rm 1st floor laundry & 1/2 bath Approx 2200 sq ft living area, oil forced air heat system & central air cond 2-car garage w/overhead storage Full bsmt., brick patio & deck

BARN - Frame & stone heifer barn w/well & pressure sys., frame equip and corn barn 44 ACRES of level to rolling land w/approx 35 acres tillable Over 2000' frontage along Log Cabin Rd

NOTE: House features maintenance free exterior, insulated windows Fantastic country view overlooking Cocalico Creek & covered bridge Extremely unique country property w/picturesque setting minutes off Rt 272 & Rt 222 by pass Inspection by appointment or open house on Sats., Oct 14, 21 & 28 from 1-4 PM For color brochure, land plotting, financing call auctioneers at 717-445-4309 or 717-733-1006

Terms by:

**W. L. LAWRENCE, SR. & RUTH E. LAWRENCE**

Mark James, Atty.

Auction conducted by  
Randal V Kline, Lloyd Kreider  
Roy Good, Jr., Auctioneers  
Lic #2116, #513, #499  
717-445-4309



## PUBLIC SALE

Saturday, October 21st 8:30 A.M.

Public sale of tools, equipment, vehicles, cabinet, wood & household goods for the estate of William Hasket located 416 Watsons Mill Rd., Alloway Twp, NJ.

Directions: Rt. 40 to Rt. 77 South to Rt. 611 West (Shirley-Aldine Rd.) go 2.8 miles to Rt. 672 (Watsons Mill Rd.) Turn Right for 1 mile. From Woodstown take S. Main St. to Yorktown Rd. (Rt. 672 south) continue 5.5 miles. Watch for sale signs.

Tools & Equipment: 1990 Silverado 1500 pickup, 96,000 miles with auto, A.C., auto, garage kept, 1977 Cad. Coupe DeVille 103,000 miles fully equipped, excellent cond., International model 460 tractor, new Honda 13 hp generator on cart (never used), industrial log splitter on wheels, 18" Rockwell planer, Rockwell table saw, radial armsaw, 10' single axle trailer, band saw, shaper, 12" jointer, bench grinder, wood lathe, drill press, air comp, anvil, wood ext. & step ladders, Snapper mower, yard cart, wheelbarrows, yard tools, misc. antique tools, broad ax, fro's, beam bore, pine tool boxes, hand cult. & planters, hay forks, scales, spring wagon, trunks, jacks, furniture & "C" clamps, chain saws strap hinges, hardware, work benches & utility tables, bag carts, corn sheller, wood planes, cement mixer, wagon wheels, etc.

Approx. 5000 board feet of oak, cherry, walnut, base, cedar cabinet wood. All rough cut 1"-2"&3" wide as 18" all cured 10 to 30 years.

Household: 2 mahog. end tables, mahog. dresser & mirror, mahog. shelf, sofa & chs., 1&2 gal. jugs, misc. dishes, canning jars, file cabinets, 4 wood pumps, 5 decoys, lg. coll. of books (Zane Grey, coll. library of Civil War, Classic of Old West, etc.), call. of Hess trucks, coll. of trains incl. many Lionel, Lionel ZW Transformer, approx. 100 collector plates, selection of antiques for refinishing, file cabinets, linens, school desk, RR signal lights, pot belly stove, and much more.

Terms of Sale: Cash preferred. N.J. checks accepted with proper I.D. Out of state checks must be accompanied by a "current bank of letter of credit". 10% Buyers Premium for all purchases.

Removal and payment in full day of sale. Held Rain or Shine. Refreshments available. Limited parking on premises. Inspection is Friday, Oct. 20th 9 AM to 3 PM

Bob Brooks, Auctioneer  
856-694-2960 Tele:  
856-694-1028 Fax: