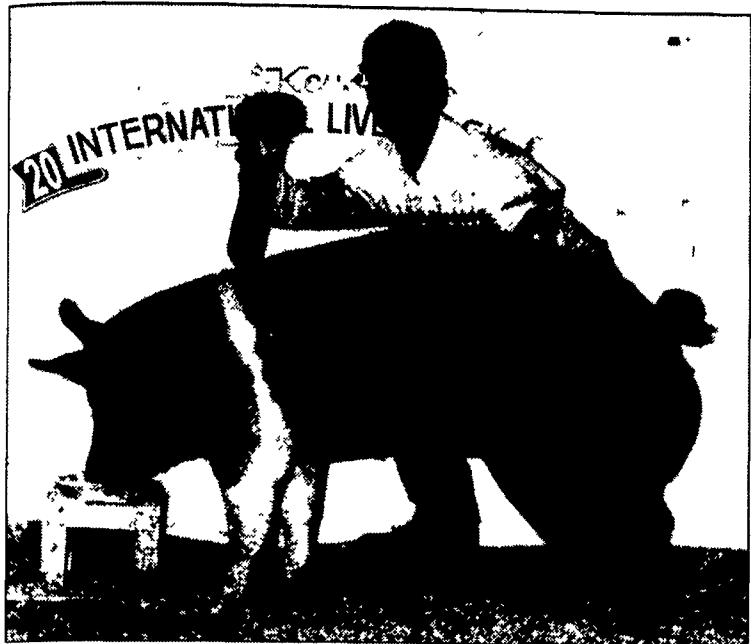


# Swine Champions Announced

(Continued from Page A25)



Hampshire open breeding champion gilt. David Holloway (shown in photo) David and Betty Holloway, exhibitors, Glen Rock.

**Poland China**  
Lovell Maple Spring of Linden, won the Poland China breeding swine champion gilt Melo Miss Notch. They also won reserve champion gilt with ZBOS 3-10. Bennecoff's Hogs of Kutztown, won premier exhibitor with Bal-Pop.

Champion boar was awarded to KC Farm of Wackersville, Md., showing KWB. Reserve champion boar went to Bennecoff's Hogs of Kutztown, exhibiting Pop Concrete.

**Spotted Swine**

Leon S. Blouse of Sykesville, won the Spotted Swine breeding swine champion gilt showing 13-9 at KILE. Redding Spot Farm of Kenton, Ohio, won reserve champion gilt exhibiting 3-9. Premier exhibitor went to Lazarus Brothers of Germansville.

Champion boar was awarded to Redding Spot Farm of Kenton, Ohio, showing 19-6. Reserve champion boar went to Larry Robinson of Delta, exhibiting 2-6.

**Yorkshire**

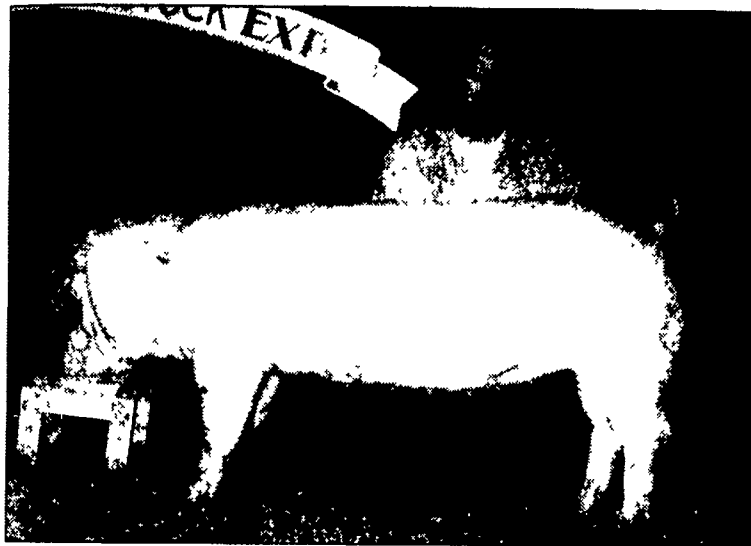
Three "D" Stock Farm of Larwill, Ind., won the Yorkshire breeding swine champion gilt showing EN 105-5 at KILE.

Wilson Farm Yorkshire of New Freedom, won reserve champion gilt and premier exhibitor with WWYO Miss Total Package 13-10.

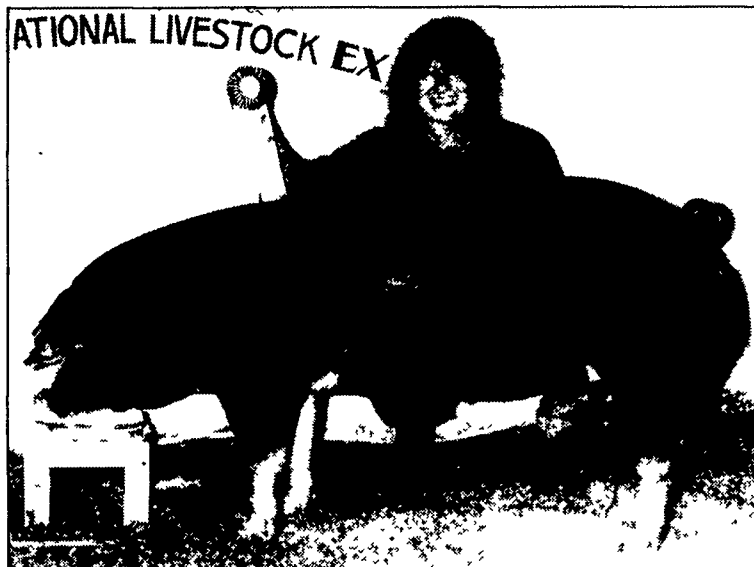
Champion boar was awarded to Three "D" Stock Farm of Larwill, Ind., showing EN 76-1. Reserve champion boar went to Wilson Farm Yorkshire of New Freedom, exhibiting WWYO No Mercy.



Poland China open breeding champion gilt. Annette Lovell (shown in photo), Melanda Lovell, exhibitor, Linden.



Landrace open breeding champion gilt. Heidi and Tyler Ricks, exhibitors, Eolia, Mo.



Spotted Swine open breeding champion gilt. Amy Lowmaster (shown in photo), Leon Blouse, exhibitor, Sykesville.

(Turn to Page A28)

**new hours!** **TOOL & MACHINERY SUPPLIES & SERVICES** **BIGGER!**  
Trade Market & Consignment Auction  
For more information call 717-363-6466

Trade Market October 19 (11AM-8PM) & 20 (8AM-4PM)

Auction: Friday starting at 9:00 AM

Paradise Sales Barn, Lancaster County, PA (Approximately 8 miles east of Lancaster PA, turn left on Meadow Lane, behind Leacock Presbyterian Church)

**THESE STANDHOLDERS HOPE TO SEE YOU THERE—**

- AFS Dust Collection Systems
- Amsoil Synthetic Lubricant Dealer
- Apple Fasteners, Inc.
- Avis Insurance
- Bald Eagle Finishing Systems
- Bank of Lancaster County
- Beiler Hydraulics
- Bingaman & Son Lumber, Inc.
- Blue Ball Machine Co. Inc.
- Custom Wood Products
- DS Machine Shop
- Diesel Power Supply
- Excel Performance Products
- Fesseden Hall Inc.
- Gehman Accounting
- Glick Tool & Machine Co.
- H. M. Stauffer & Sons, Inc.
- Hermance Machine Co.
- Imperial Diesel Machinery
- Jancy Engineering



- Keystone Air Power/Hydra Power
- Lanco Hydraulic Services
- Meadow Valley Machinery
- Millway Home Improvements
- Nu-Tec Tooling Co., Inc.
- Old Mill Woodcraft
- PA Mennonite Credit Union
- Paneling Sales
- Plain Communities Business Exchange
- PowTran International Co. Inc.
- Reiffen Rubber
- Rosewood Design
- R. W. Connection
- Safeguard Business Systems
- Sam's Mechanical Service
- The DavCo Family, Inc.
- Thomas Goldkamp Inc.
- Walter & Jackson Inc.
- Woodworkers World
- Woodwright Stains & Finishes
- Zimmermans Auto Body



Inspect new products, equipment and supplies from various **WOODWORKING & METAL WORKING MANUFACTURERS, SUPPLIERS, AND DEALERS.**

**Register for Many Door Prizes!**

Learn about various business services available from **ACCOUNTING FIRMS, BANKS, CREDIT UNIONS, INSURANCE COMPANIES, AND OTHER SERVICE PROVIDERS.**



**TimberLeads**  
"Money DOES Grow on Trees"<sup>®</sup>  
The best price for your standing timber may come from a buyer 100 miles away! One **FREE** call to TimberLeads connects you to timber buyers in Central PA. Our **FREE** service can help you receive a competitive price for the timber on your land. Landowners call TimberLeads today!  
**1-877-386-7595**  
[www.timberleads.com](http://www.timberleads.com)

**See Us About The New I.H. Rissler 2000 Series**  
**Hog Tiger Mixer**  
**GOOD USED MIXERS FOR SALE**

- Oswalt 230 Trailer Mixer In Working Cond
- 150 Rissler Mixer (Good Condition) **SOLD**
- 135 Rissler Mixer
- New 300 Oswalt Mixer
- 100' center charge Jamesway Feeder
- VanDale 3400 Manure Tanker (New)
- Starline Rollermill
- Starline Centrak 18 ft Ring Drive Unloader
- 24 Ft Big Jim Unloader
- Patz 24 Ft. Ring Drive Unloader New in 1994 (In Good Condition)

**All In Good Condition**  
★ **STAR SILO** ★  
Myerstown, PA  
**800-431-7709**