

# EBY *The Source*

## for Grain & Bulk Commodity Transportation Equipment

### **EBY AGRI** **BULK COMMODITY TRAILERS**

#### **NEW 2001 EBY "LIGHTWEIGHT" MOVING FLOORS IN STOCK FOR IMMEDIATE DELIVERY**

- 46' x 96" x 13' White Side, Double Wall, Spread Axle
- 46' x 96" x 13' White Side, Single Wall, Air-Ride Slider
- 45' x 102" x 12'6" White Side, Double Wall, Air-Ride Slider

#### **USED TRAILERS**

- 1995 Wilkens, 45' Air-Ride Spread
- 1993 Wilkens, 45' Air-Ride
- 1984 Dorsey, 42' Keith Walking Floor
- 1985 Trailmobile, 40' Keith Walking Floor

#### **ALUMINUM RUNNING FLOOR BODY AVAILABLE FOR IMMEDIATE DELIVERY**

- New 26' x 96" x 90" Body, Keith Floor, setting on Used 1990 Mack DM 6885, Excellent Condition

#### **ALUMINUM GRAIN BODIES BY EBY LET US BUILD ONE FOR YOU!**

- Lengths Available: 12' to 24'
- Widths: 96" or 102"
- Side Heights: 48", 54" and 60"
- Tailgates: Top hinge, top and bottom, and side hinge
- Hydraulic silage tailgate
- Quality Harsh Hoists



#### **TIMPTE GRAIN HOPPERS**

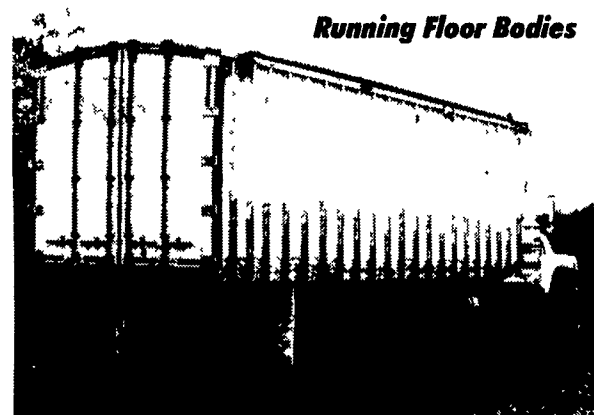
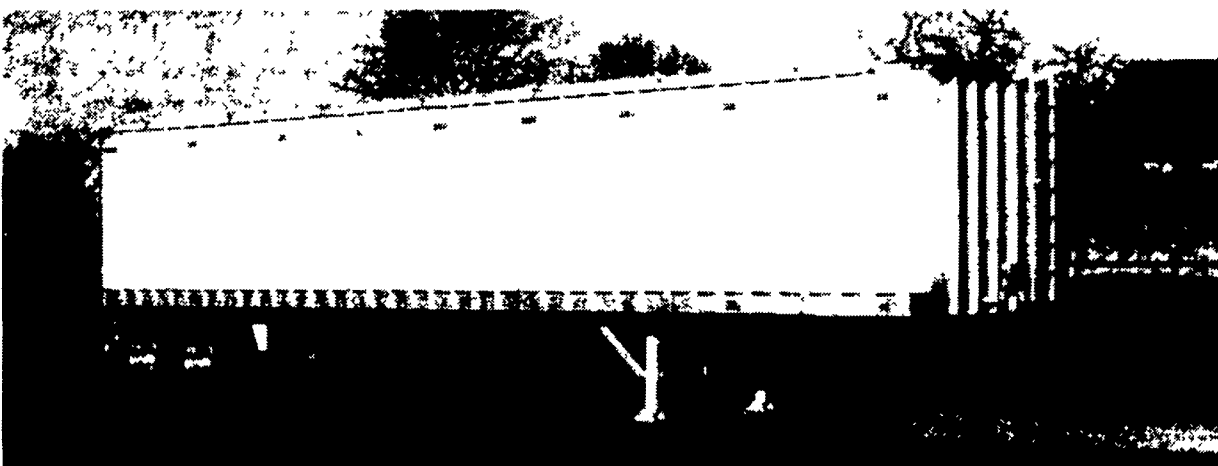
- Standard Sizes: 33'5", 38', 40', 42'2", & 45'
- Side Heights: 66", 72", 78", 84" & 90"

#### **USED HOPPERS**

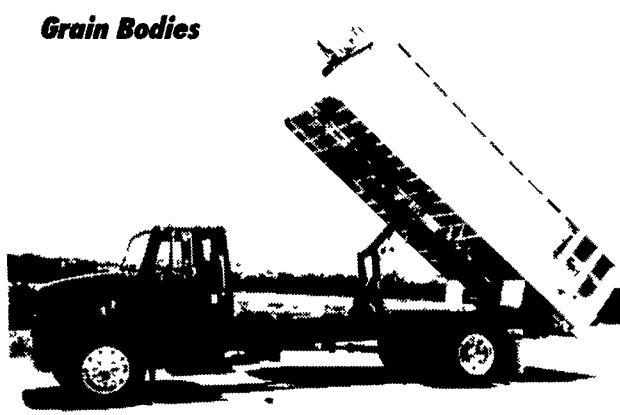
- 1998 Steel Wheeler, 40' x 96" x 66"
- 1998 Timppte, 42' x 96" x 66"
- 1992 Wilson, 43' x 102" x 78"
- 1985 Steel Agri-Trader, 40' x 96" x 66"



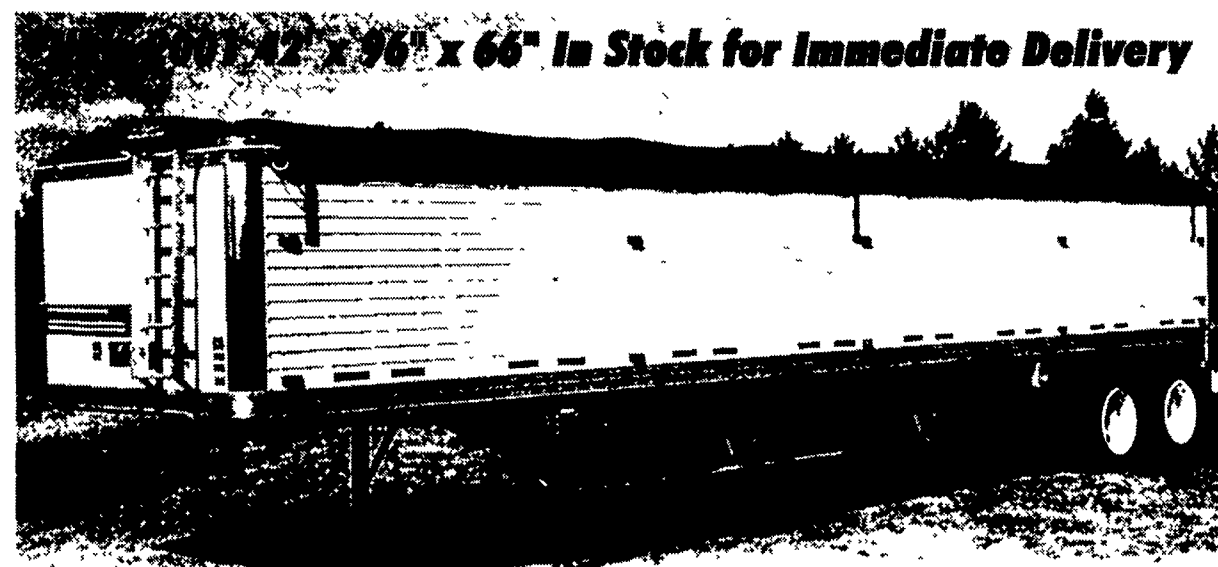
Available in Double Wall Smooth Side



Running Floor Bodies



Grain Bodies



2001 42' x 96" x 66" In Stock for Immediate Delivery

**M.H. EBY, INC.**  
**Blue Ball, PA**  
**800-292-4752**  
**717-354-4971**  
**sales@mheby.com**  
**www.mheby.com**