

**AS YOU HARVEST, TAKE SPECIAL NOTE OF YOUR CORN AND BEAN STANDS. ARE YOU FINDING PICKET FENCE STANDS? IF NOT, CONTACT BINKLEY & HURST BROS. TODAY FOR A PLANTER CHECK-UP!**

*When you talk about transport, wider is NOT better!  
Move from planting position to transport in SECONDS, from your tractor seat!  
**KINZE gives you the only swing frame planter on the market today!***

**BINKLEY & HURST BROS. INC. HAS THE ANSWERS TO YOUR PLANTER NEEDS - INCLUDING A SPECIAL TIME-LIMITED DISCOUNT ORDERING PROGRAM! DON'T SETTLE FOR LESS! BUY THE BEST!**

**NICE SELECTION OF NEW KINZE PLANTERS IN STOCK!**

**What makes a KINZE 3000 Planter stand head & shoulders above the competitive crowd?  
Let's count the ways...**

- 1. The deepest manufacturer's discounts in company history! HUGE SAVINGS!**
- 2. The traditional easy access, superior servability and incomparable narrow transport! \*6, 8, 12, 16 row planters travel roadways at 11'6".**
- 3. The new 3000 Series row unit has stood the test in rough & rocky no-til challenges this spring. \*You can purchase your new KINZE planter with utmost confidence.**
- 4. Resale value on 2000 Series planters is climbing consistently year-to-year. \*The demand for the best in used planters means now is a great time to trade up!**
- 5. Service after the sale is our guarantee! \*We put our name and reputation on the line to keep your planter running!**

#### **Twin-Line® Planters**

**...from the field to the road in seconds**

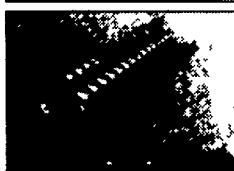
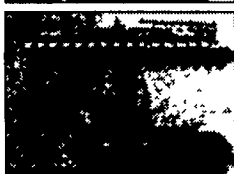
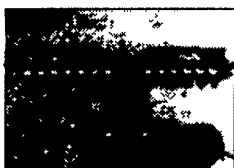
**KINZE's Exclusive Rotating In-Line Transport:** the only system that offers you narrow transport on large planters equipped with narrow row Interplant® or fertilizer options. As narrow as most tractor duals

The unique, patented hydraulic "lift & rotate" system features a rugged, heavy-duty stainless steel clad center post (on both 3500 and 3600 models) which rotates on large tapered bearings seated at the base of the post (Model 3400 uses a parallel linkage system with dual lift cylinders)

• **UHMW plastic pads glide up and down** against the smoothly machined surface. Absolutely no lubrication is required (3500 and 3600)

• **A self-contained counter-balance valve** in the lift cylinder provides additional safety when the planter is in the raised position. The planter will not lower without hydraulic pressure from the tractor. (3400 and 3500)

• **A Spring-loaded latch/hook** secures the planter while it's in the fully raised position by locking the toolbar in place (3600)



**For Expert Planter Sales & Technical Service  
Always See BINKLEY & HURST BROS. Inc.**



**Configurations Available from  
4x30" thru 31x15" Rows**

**PRECISION + SIMPLICITY =  
KINZE 3000 SERIES PLANTERS**

**- Ask about our 10" & 20" capability -**

**Now is an excellent time to let us  
up-time your used planter for spring...  
...with a complete checkup  
on your planter's seed  
metering systems.**

We offer the most accurate, full-service seed meter test facility around. Plus, the parts, service support and experience you need to operate efficiently. We test brush-type seed meters, as well as finger pickup corn metering systems. Fine-tune your planter's metering system, before you plant, to ensure population accuracy for top yield performance results.

**See us today! We do Case IH - New Idea - John Deere - Kinze  
A Binkley & Hurst Up-Time Pays Big Dividends!  
Make Your Appointment Now! Call 1-800-414-4705**



# KINZE®

**The Best In Planters ~ Now Even Better!**

## PRECISION & Simplicity

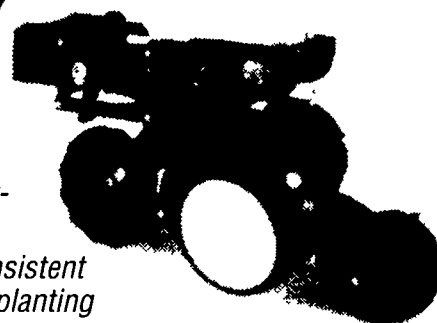
**FEATURING ...**

**The New KINZE® EVOLUTION SERIES Row Unit.**

Totally redesigned for longer life, simplified adjustments and smoother, more dependable operation.

**NEW!** Load-equalizing depth/gauge wheels for consistent seed placement, even in heavy residue or rugged planting conditions.

**NEW!** Seed hopper design with 18% more capacity (1.9 bu).



**KINZE  
3000**

4-Row & 6-Row

**KINZE  
3500**

6-Row & 8-Row  
11'6" Transport

**KINZE  
3600**

12-Row & 16-Row  
11'6" Transport

**LIQ./DRY FERT \* INSECTICIDE \* INTERPLANT 15" CORN or BEANS**

**BINKLEY & HURST  
BROS. INC.**

133 Rothsville Station Rd.  
P.O. Box 0395, Lititz, PA 17543-0395  
(717) 626-4705 • 1-800-414-4705  
Fax 717-626-0996

