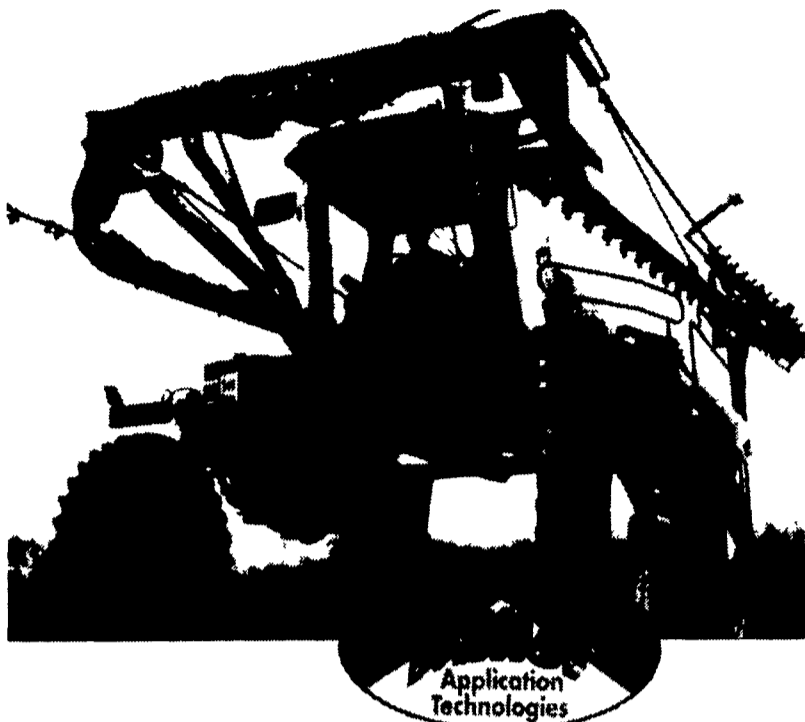




# MILLER PRO



**HEAR WHAT SOME OF OUR CUSTOMERS SAY ABOUT THE NITRO**

*"Smooth boom suspension coupled with unmatched turning radius and high crop clearance makes a machine that is super productive even in mature crops."*

Bob Galetta  
Atlantic Blueberry Farms  
Hammonton, NJ

*"The Nitro is a super machine and is backed by a super dealer. Messick's parts & service is first class!"*

Robert Burchett  
Maple Spring Farms  
Airville, PA

*"A-1 machine! Front-mount boom gives exceptional visibility, and makes for fast, efficient spraying. The Nitro makes spraying fun!"*

Jim Miller  
Kreider Farms  
Manheim, PA

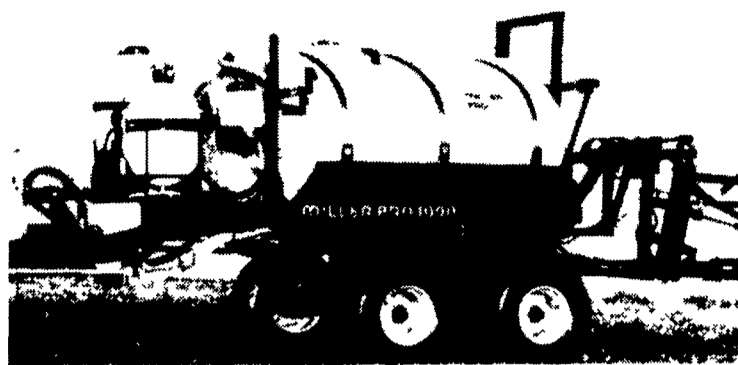
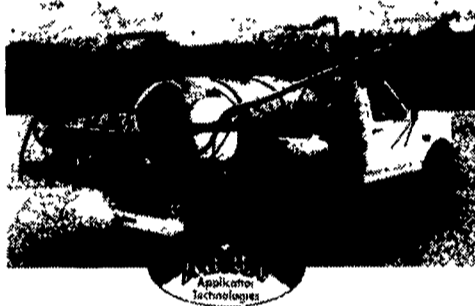
*"Great Boom ride & visibility! Also doubles as a floater... we put 75GPA on at over 5 MPH"*  
Dorsey Owings  
Owings & Sons  
Millington, MD

Explosive power and capacity take shape in the NITRO™, built for full season application in the row with *adjust-on-the-go* wheel spacing. Unobstructed 6' clear span profile. Deluxe Series cab for superb visibility of front mounted boom. *Air-Flex™* suspension and 50/50 weight distribution.

**Precision control. Driving Performance.**

- Load Sensing Hydraulics
- Insta-Response Monitoring
- High Performance Hydraulic Pumps
- Joystick Finger-Tip Precision Control
- Hydraulic Fold Booms
- Exclusive Field Cushion™ Boom Suspension

## NITRO



## The Sprayer of Choice

**Built To Your Specs:** Hydraulic Fold Booms, Chemical Indicator, Rinse Tank, Raven Radar, Fence Row Kit, Foam Marker

## THE RIDE OF YOUR LIFE!

Liquid & Dry Boxes

silverwheels

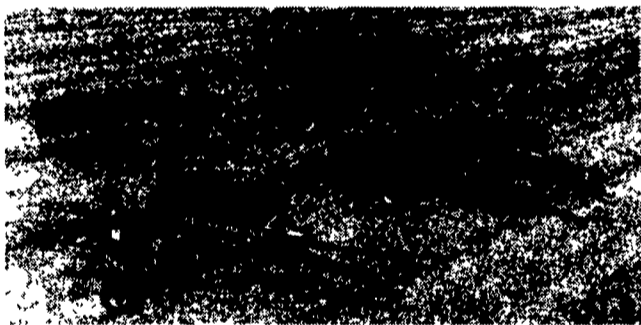


The Silver Wheels™ CenterRide™ Chassis

more money

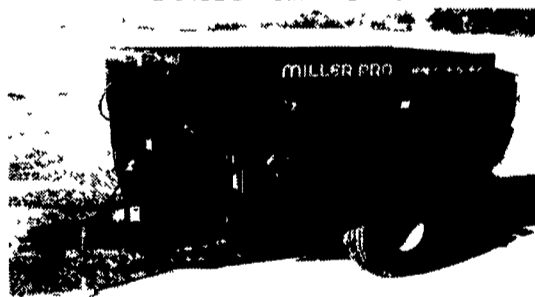


## Rotary Cam Action Rakes

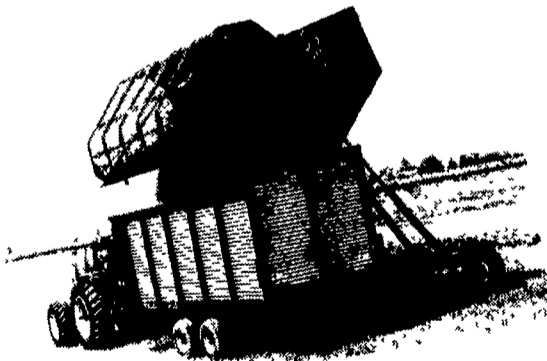
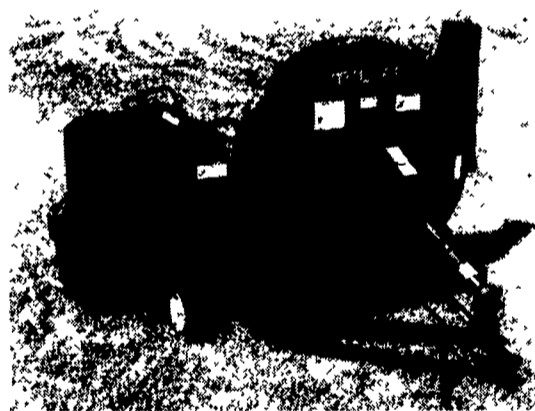


**We Are Your Only Full Line Miller Dealer**

## TMR Mixers



## 1060 Blower



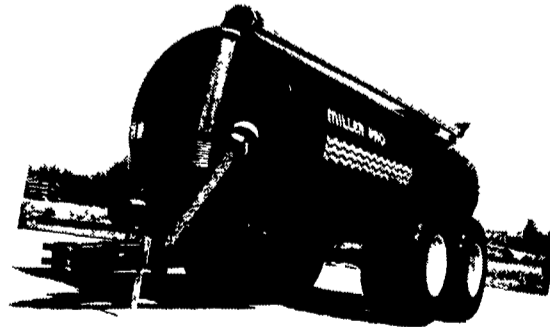
**Dump Boxes & Tandem Trailer Style Wagons**

## AVALANCHE™

Power Merger



Power Merging Options



**Manure Tankers & Pumps**  
5200 gal. in stock

**FALL SPECIAL**

**ORDER BEFORE OCT. 27, 2000 FOR BIGGEST SAVINGS\$**

RD #1, Box 225A, Route 30  
Abbottstown, PA 17301  
717-259-6617

**MESSICK'S**  
SERVING TWO LOCATIONS

Rheems Exit - Route 283  
Elizabethtown, PA 17022  
717-367-1319 717-653-8867