

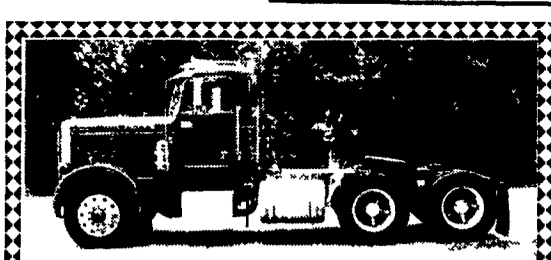
**1987 Ford LTL9000 Truck Tractor, CAT 3406, 350 HP, 13 Sp. Trans., PS, A/C, Engine Brake, 40K RA Air Ride Susp.....\$12,500**

**1985 Rogers 40 Ton Lowboy Trailer, T/A Wet-line, 22' Deck, All Matched Tires, Straight & Clean.....\$16,000**

**Curry Supply Co., Curryville, PA  
1-800-345-2829**

**EQUIPMENT FOR SALE**  
 1- 1994 WL900 Kenworth 425 Cat, Loaded, 13 Speed, AC, PS  
 1- 1994 T600 Kenworth 425 Cat, 9 Speed w/Aerocab  
 1- 1986 T600 Day Cab, 350 Cummins, 9 Speed  
 1- 1994 Freightliner Cabover, 365 Cat, 9 Speed  
 1- 1991 Utility Drop Deck, Taut Liner 48x102, Air Ride  
 3- Trailmobile 48x102, Air Ride  
 1- 1986 Mack MS 250, Straight Truck  
 1- 1990 Kenworth Truck Tractor, 400 Detroit, 9 Spd.  
 1- 1995 Kenworth Truck Tractor, 425 Detroit, 9 Spd.  
 ♦ Financing Available ♦

**Curran Inc.**  
 2719 Delta Road, Brogue, PA 17309  
**717-927-9244**



**1979 PETERBILT 359 TRACTOR**  
**496,000 Miles. 32,000 Miles on 400 Big Cam Major Rebuild, 34,000 Miles on Trans & Clutch. Frame Rails Replaced 1993. This Truck Can Still Make Money.**  
**\$7,900 OBO**  
**717/898-8122**

**35 TRUCKS AND TRAILERS**

1988 Mack Superliner, exc cond, must see! 570-224-4662.

1962 B-61 Mack boom truck, 50' stick height, inspected, good cond., \$8900. 215-766-0564.

1988 Freightliner, C/O tractor, exc cond, \$8,000. 1998 Fruehauf, flatbed trailer, 10248 air ride, spread axle, \$13,000. 1979 Fruehauf flatbed trailer 9640, \$3,500. 570-965-2008.

Mack Used Truck Parts for Sale. Mack trucks bought complete or parts. Aluminum dump trailers, many sizes. Reasonable Prices. 1-888-625-6485

1987 Volvo White tractor, single axle or with tag axle, conventional, 320 Detroit, good cond. \$4800. 717-776-7725

New 2001 Barrett alum stock trailer, 8x28. 570-398-2688

'84 Int S1900 C&C, 466, 5 spd, 26,000 GVW, 150" C/A, \$4200. 717-463-3938 No Sunday Calls

1986 GMC pickup w/ flatbed, 6.2L engine, auto., 4WD, good truck for farm use, \$1800. Call Kevin at 410-658-5518.

'93 Freightliner FLD120 double bunk. '75 Trailco alum dump trailer, tri-axle. 973-875-4900 days 973-875-6251 eves

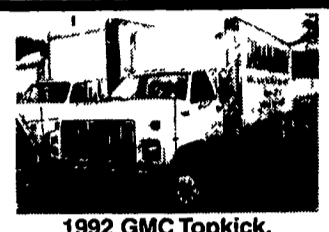
'70 Ford C800 20' feed van body, feed blower, dump, \$800. 717-872-2781

1981 Ford L9000 tandem axle road tractor, \$7500 OBO. 717/292-4241.

'85 IH 1700 truck, 9L dsl, 16' stake dump, pintle hook, new paint, 108k mi, ex cond. \$12,500. 610-775-8856



**1986 Int. 9670**  
 Cab Over, 6x4, Air Brakes, 350 Cummins - Fuller 10 Speed  
**\$6,900 \$5,200**



**1992 GMC Topkick,**  
 20,600 GVW, 5 Speed Cat Engine, A/C in Cab & in Insulated Body with Racks  
**\$8,900**



**1995 UD #2600**  
 25,995 GVW, 18 Ft. Van Body  
**\$24,900 \$23,900**



**1993 GMC Diesel**  
 w/14' Van Body, Auto Trans., AM/FM, 14,250 GVWR  
**\$8,900 \$8,599**



**1999 (New) Nissan UD 1800,**  
 175 HP, 6-Speed, 16 ft. Stake Dump Body  
**\$31,900**



**2000 UD #2000**  
 19,500 GVW, 20' Steel Rollback with Wheel Lift, Loaded  
**\$47,350**

**INTERNATIONAL CENTRAL GARAGE, Inc. UD TRUCKS**  
 South 2nd St. (Rt. 419) Womelsdorf (Berks Co.) Pa  
**610-589-4581 or 800-860-4581**

**BIRCHWOOD AUTO SALES 717/949-6513**

1998 FORD F150 XLT, 2WD, 4.2 V6, AT, AC, PW, PL, PM, Tilt, Cruise, Cass, Alloys, Sharp Truck! Black, 39,900 Miles **\$14,500**

1995 FORD RANGER XL, Ex Cab, 2WD, 3.0 V6, AC Mag Wheels, Alarm, Tarp, Red, 74,000 Miles, Sharp Truck! **\$7,900**

1993 FORD F-150 XLT, XCab, 2WD, 302 V8, AT, AC, PW, PL, PM, Tilt, Cruise, Cass, Red/Grey, One Owner, 25,000 Miles **\$13,900**

1992 CHEVROLET S-10, 2WD, 2.8 V6, 5 Spd, AC, Cass, Red/White, 88,000 Miles **\$4,500**

1988 CHEVROLET 1500 CHEYENNE, 4x4, 305 V8, AT, AM/FM, Black, 69,000 Miles **\$6,900**

1988 CHEVROLET SCOTSDALE 2500, 6.2 Diesel, Ex Cab, 4x4, 4 Spd, AC, PW, PL, Tilt, Cass, Cruise, Red/White, 107,000 Miles **\$8,500**

1988 FORD F-150 XLT, Ex Cab, 4x4, 302 V8, AT, AC, PW, PL, Tilt, Cruise, Cass, Red/White **\$6,900**

1987 FORD F-150 XL, 2WD, 300 6 Cyl, Cass, Delays, 77,000 Miles, Red **\$2,900**

CALL ABOUT OUR LINE UP OF SUVs  
 WE ALSO BUY CLEAN USED TRUCKS, OLD OR NEW, GAS OR DIESEL



(717) 949-6513  
 Schaefferstown, PA

**AL HAMILTON USED TRUCK SALES**

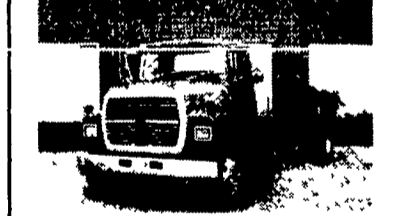
P.O. Box 157 • 55 Doe Run Road • Manheim, PA 17545

**Phone: 717-665-7145 • Fax 717-665-2137**

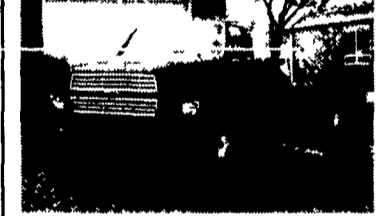
★★ "CLEANEST TRUCKS AROUND" ★★  
**SUMMER SALE All Prices Reduced!**



**'95 INT. 4700 C&C**  
 DT408, 5 Spd. Trans, Hyd. Brakes, Custom Int., A/C, WB 168, CA 108, 25,500 GVW  
**\$22,500**



**'92 FORD LN8000**  
 C&C, 7.8 Ford Diesel, 210 HP, 6 Spd. Trans, Custom Cab, Air Brakes, 234 W.B., 168 C.A., 33,000 GVW **\$18,500**



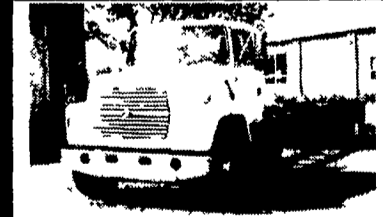
**'94 FORD F700**  
 C&C, 429 Gas, 5 Spd. Trans., 14,000 Actual Miles, 207 W.B., 140 C.A., Like New **\$19,500**



**'94 FORD LN8000**  
 New 10' Dump, 8.3 Cummins 210 HP, 6 Spd. Trans., Air Brakes, Custom Int, 35,000 GVW **\$29,500**



**'86 FORD LN8000**  
 New 10' Dump, 3208T, 250 HP, 5 Spd. Trans., 2 Spd Rear, Custom Int., 33,000 GVW **\$19,500**



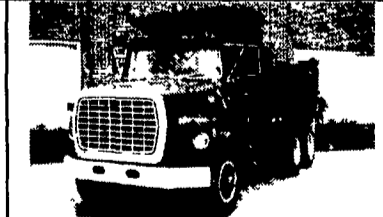
**'95 FORD LN8000**  
 C&C, 8.3 Cummins, 210 HP, 6 Sp Trans, Custom Int., Air Brakes, A/C, 260 W B, 192 C.A., 35,000 GVW **\$23,500**



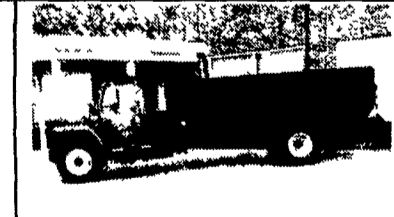
**'93 INT. 4900**  
 w/18' Morgan Box & Lift Gate, 8' High, 102" Wide, DT-466, 5-Spd Trans, 35,000 GVW, A/C, Air Brakes **\$19,500**



**'93 INT 4900**  
 C&C, DT 466, 6 Spd. Trans, Custom Int., A/C, 32,000 GVW, 254 W.B., 186 C.A **\$19,500**



**'78 FORD LTS 9000**  
 15' Dump, 6-71 Detroit, 4x4 Trans, 60,000 GVW, Nice Older Truck **\$12,500**



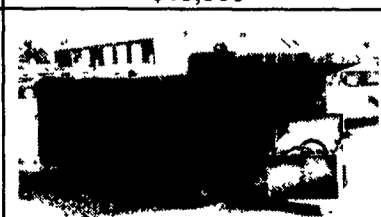
**'85 INT. 1700 16' FLAT DUMP**  
 9L Engine, 5 Spd Trans, Hyd Brakes, 25,000 GVW **\$14,500**



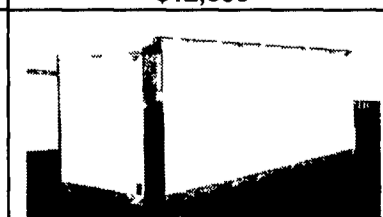
**'93 INT 4700**  
 16' Van Body w/Lift Gate, DTA 360, 170 HP, Hyd. Brakes, A/C, 25,500 GVW **\$15,500**



**'89 FORD LN8000**  
 New 10' Dump, 7.8L Engine, 240HP, 6-Spd. Trans, 33,000 GVW **\$21,500**



**14' J& DUMP**  
 w/Hoist & Pump, Barn Door **\$3,500**



**USED VAN BODIES**  
 18-22-24 (1) 24' w/96" Door Starting **\$2,000**



**'98 EAGER BEAVER**  
 10 HA-PT, 22' Deck, 6' Ramps, 102 Wide, Air Brakes, 25,000 GVW, Brand New **\$9,500**