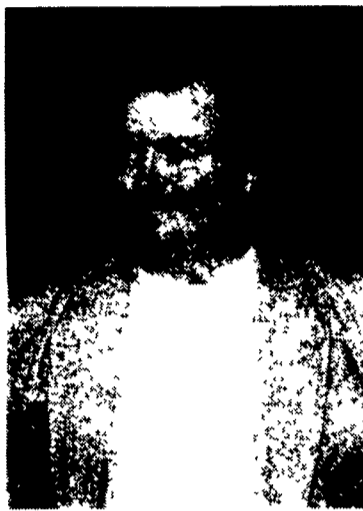


Livermore Joins Blue Seal As Dairy Sales Rep.

LONDONDERRY, N.H. — David S. Livermore, Shippenburg, Pa., has recently joined Blue Seal as a dairy sales representative, serving customers out of Blue Seal's Hagerstown, Md. mill.

A graduate of Penn State University, Livermore served in a similar capacity with another major feed company before coming to Blue Seal.

Blue Seal Feeds, Inc. is headquartered in Londonderry, New Hampshire and is affiliated with Kent Feeds, Inc. in the Midwestern states and Evergreen Mill, Inc. in the southwest. Blue Seal manufacturers feed for horses, dairy cattle, livestock, poultry, pets, and wild birds.



David S. Livermore

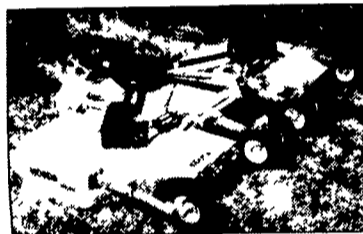
Flexible Wing Rotary Cutter Features Design Improvements For Less Downtime

ROCKFORD, Ill. — Woods Equipment Company has introduced the improved Batwing 3180 Series 3, a heavy-duty 15-foot flexible wing rotary cutter that offers exceptional cutting performance in contract mowing and agricultural applications.

Ideal for production agriculture, highway right-of-ways, and other municipal bid jobs, the 3180 Series 3 features the bottom side, heavy-gauge, high strength steel box frame construction that provides a strong deck structure, so the top of the deck is free of structural components.

"Because the top deck is smooth, it sheds water and debris," said Kirt Swanson, product manager of the Batwing line. "This prevents corrosion, and can add to the life of the machine."

The machine has several design features that enhance cutting efficiency and long life. These include a gearbox shield redesigned into one piece that flips up intact for easy maintenance. Deck protection plates have been added to prevent deck damage from a bent blade, and a Constant Velocity (C.V.) input



The Batwing 3180 Series 3 flexible wing rotary cutter from Woods Equipment Company features a bottom side, heavy gauge, high strength steel box frame construction that provides a strong deck structure.

driveline is upgraded to Category 6 Heavy, the highest in the industry. Also new for 2000 is a redesigned one-piece ductile iron spring-loaded wheel arm for increased durability.

Other features of the Batwing 3180 Series 3 include a 180-inch cutting width and a blade tip speed of 16,000-feet per minute. "We designed the Series 3 with a blade tip speed that would ensure the highest quality cut from a rotary cutter," said Swanson. "For our customers, this means a near finish-quality cut, even in brush of up to three-

DES MOINES, Iowa — Richard D. Schmalz, Doylestown, Pa., was recognized recently as a 1999 National Grain Sorghum Producers (NGSP) Yield Contest winner. The award presentation was made earlier this year during the NGSP annual conference in Corpus Christi, Texas.

The 14th annual NGSP Yield Contest recognized 100 state winners and 15 national winners in six divisions: non-irrigated and irrigated conventional tillage, non-irrigated no-till, non-irrigated and irrigated mulch-till, and irrigated ridge-till.

As a nine-time NGSP yield contestant, Schmalz placed first in both the state no-till non-irrigated and mulch-till non-irrigated divisions. Pioneer® brand 8699 gave him the winning grain sorghum yield of 52.19 bushels per acre and 31.89 bushels per acre respectively.

"I selected Pioneer 8699 because I was informed that it was a good hybrid for growing conditions in our area," said Schmalz. He and his wife Carole raise corn, sorghum, and wheat.

Not all fields have the same production capacity, so management decisions including seed selection and irrigation play a large role in determining grain sorghum yield, said John Muen-

inches in diameter."

The Batwing 3180 Series 3 features Woods' patented Intra-Drive gearbox, which eliminates the need for a splitter gearbox. This results in shorter wing drivelines and fewer moving parts for low maintenance and increased reliability. All Intra-Drive gearboxes feature heavy-duty 2½-inch diameter output shafts and double spindle shaft seals, and are backed by a 36-month warranty.

The 3180 Series 3 offers a 13-inch deep deck. This depth increases cut material capacity and reduces clogging. Also, the under-deck baffling controls material flow for excellent clippings distribution.

Willmar Eagle Sprayer Has Full-Authority Electronic Powertrain

ATLANTA, Ga. — "The new 1200 gallon Willmar® Eagle® 8600 sprayer is the most powerful, response-automated, traction-controlled, and versatile Fieldstar Precision Agriculture System equipped applicator in the world today," said Daryl Patten, Willmar general mar-



Richard D. Schmalz, Doylestown, placed first in both the state no-till non-irrigated and mulch-till non-irrigated divisions of the 1999 National Grain Sorghum Producers (NGSP) Yield Contest. From left, Carol Bannon, Pioneer agronomy manager from Skaneateles, N.Y. with Carole and Richard Schmalz.

kenberger, sorghum product manager at Pioneer Hi-Bred International, Inc. "We're pleased that our hybrids achieve winning yields. Pioneer is proud to recognize Richard and Carole as yield contest winners."

More information on

Skid-Steer Loaders Increase Operator Comfort

FARGO, N.D. — Bobcat Company announced the availability of an air-conditioning system for its enclosed-cab 863, 873, and 963 skid-steer loaders and 864 compact track loader.

This factory-installed air-conditioning option enhances operator comfort in hot climates without adding external components to the loader design.

Conveniently located on the upper left of the cab, the new Bobcat® air-conditioning control panel features a temperature control dial and three-speed fan dial, which can lower cab temperature up to 30 degrees Fahrenheit. With the panel's center rocker switch, an operator can easily turn the air-conditioning compressor on and off. For optimal operator comfort, four adjustable air vents

direct the air according to operator preference.

Unlike other add-on air-conditioning units, the Bobcat air-conditioning panel does not affect loader cab height or operator visibility. Each component of the system is protected within the loader framer, ensuring operator comfort without sacrificing loader design.

The air-conditioning draws a maximum of 3.5 hp from the engine while removing a minimum of 17,000 BTUs per hour of heat from the cab. The unit uses 25 percent fresh air and 75 percent recirculated air.

The air-conditioning system joins the list of next-generation operator comfort features in Bobcat's recently introduced G-Series line, including the factory-installed heating option.



New 1,200-gallon, 280-hp Willmar Eagle 8600 Sprayer features full-authority electronic powertrain control of engine, transmission, traction, and spray pump to ensure accurate application in varying field and speed conditions.

culture system, including Differential Global Positioning System (DGPS), information recorded previously can be used with the Eagle 8600 to vary application rates and log information necessary for management decisions.

The Fieldstar system can also import data from any other precision agriculture system, giving custom applicators great versatility in working with farmers. The Fieldstar DGPS receiver is also lightbar compatible, extending operator field time and improving navigation accuracy.

Pharmacia Announces Animal Health Leadership Appointments

PEAPACK, N.J. — Pharmacia Corporation announced the appointment of George Gunn, BVM&S, as president, animal health worldwide.

Gunn joins Pharmacia from Johnson & Johnson, where he has served in leadership positions in various J&J businesses since 1986. He has held a number of positions with the animal health business, including vice president of animal health, Europe. Most recently, Gunn was director, professional sales and marketing, for the McNeil consumer nutritional business.

Gunn began his professional career in private veterinary practice in Scotland, and subsequently worked for six years

with the Ministry of Agriculture, Fisheries and Food in the United Kingdom. He joined the Wellcome Foundation in 1983 as veterinary adviser in the U.K.

"George is a proven leader with a passion for animal health, and he brings a solid global perspective to our business," said Stephen P. MacMillan, sector vice president, global speciality operations, Pharmacia Corporation. "He is an exceptional team builder with a keen ability to focus on key initiatives that can significantly grow our global animal health business."

Gunn earned his veterinary degree in 1973 and obtained an advanced veterinary degree in 1970 from Edinburgh University.

Pharmacia also announced the appointment of Julia Stephanus as vice president, companion animal group. Stephanus has more than 11 years of animal health marketing experience in positions of increasing responsibility, most recently serving as director and group leader of the companion animal business of Pfizer, Inc. Stephanus has a bachelor's degree from Indiana University. Stephanus will report directly to Gunn.

In announcing its new appointments, Pharmacia announced that Peter Croden, the company's current president animal health, will leave Pharmacia effective Sept. 30.

keting manager.

The Eagle 8600 sprayer is powered by a new Cummins® 280 hp Quantum System diesel engine, (optional 340 hp available), with full-authority electronic powertrain that controls the engine, transmission, traction, and spray pump to ensure accurate application in varying field and speed conditions.

As field conditions change, the Total Control System (TCS) electronic control module regulates the amount of hydraulic oil directed to the transmission and wheel motors to deliver constant traction. Working in concert with the TCS, the patented split axle, four-wheel independent AireGlide suspension smoothes out the bumps for real riding comfort.

The Eagle 8600 is Fieldstar Ready. When equipped with an AGCO Fieldstar Precision Agri-

See
**Lancaster
Farming
CowCam**
Visit our Website
at www.lancasterfarming.com