

STOLTZFUS TRACTOR SERVICE

Rebuilding engines, transmissions,
PTO's, Tune-ups.

1715 Beaver Valley Pike,
Strasburg, PA 17579

717-786-0256

Amos Stoltzfus
"15 Years Experience"

IH 1460 COMBINE

Hoovers 2000 U P LIME

175 ft S20

GRAIN TANK

863 CORN HEAD

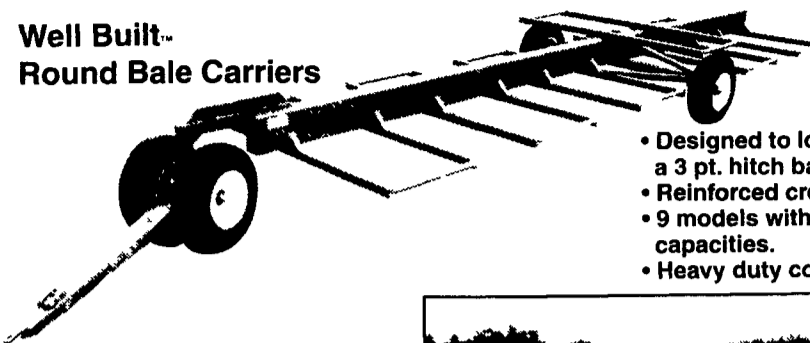
\$19,000

717-733-8246

Well Built™ to Handle Your Hay

Trust Your Most Important Forage Crop to Stoltzfus Mfg.

**Well Built-
Round Bale Carriers**

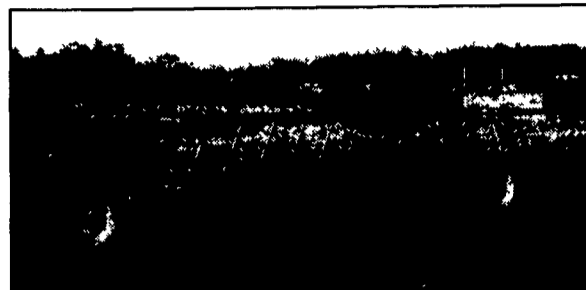


- Designed to load & unload with a 3 pt. hitch bale spear.
- Reinforced cross members.
- 9 models with 6, 8 or 10 bale capacities.
- Heavy duty construction.

Well Built- Feeders:

- Built tough for long life!
- Available in a variety of lengths.
- Adjustable slant bar or self-locking head locks.
- Ideal for cattle in either feedlots or meadows.

Shown Well Built™ Slant Bar Feeder



Gates • Slant bar Sections • Head locks • Gutter grates



For a free brochure or more information call 610/273-3603

540 White School Rd
Honey Brook, PA 19344
610/273-3603

156 Pompey Hill Rd
Stoytown, PA 15563
814/893-5086

DEALER INQUIRIES INVITED • CUSTOM WAGONS A SPECIALTY

**GET PRECISE
APPLICATION CONTROL**

New Holland side-delivery spreaders provide the most material control. Whether you're light top dressing, laying down a heavy layer, or anything in between, the Model 3110 puts the right amount of material right where you need it.

- Handles a wide variety of material – slurry, gutter material, cow manure, even poultry litter.
- V-tank design delivers material to the auger fast.
- Heavy-duty round-core auger produces less drag.
- Double-acting hydraulic cylinder moves auger up and down to keep material flowing.
- Hydraulic gate and specially designed expeller give precise application control.
- Backed by a 10-year warranty against tank rust-through.

See us for all your spreader needs.

New Holland Box Spreaders also in stock.



NEW HOLLAND



QUALITY USED EQUIPMENT FOR SALE

- NH L553 Skid Loader
- (2) NH LX485 Skid Loaders
- MF 520 12 ft Disc Harrow
- Oliver 253 14 ft. Disc Harrow
- JD 885 No-Till 4-Row Cultivator
- JD 27 14 ft. Flail Shredder
- (4) NH 492 Haybine
- NH 1495 Haybine
- NH 499 Haybine
- NH 1495 Haybine-For Parts
- Case IH 8340 Mower Conditioner
- NI 279 Cuditioner
- NH 846 Round Baler
- Hesston 555T Round Baler, Used One Year \$6,995

HARVESTING EQUIPMENT

- NH 28 Blower
- NH 900 Harvester
- Gehl 1060 Harvester w/3RN Corn Head & 7' Hay P/U

**Add up the
Super Boom™ advantages**

No skid steer compares to a New Holland LS 160 SuperBoom™. Add up the advantages:

- **Superior visibility:** no rear frame towers in your way.
- **Unbeatable stability:** longer wheelbase and lower center of gravity make Super Boom a productive, comfortable, safe machine.
- **Faster speeds:** the fastest ground speeds in the industry for quicker cycle times.
- **Unequaled dump height & reach:** vertical boom lift path makes it the best.
- **Pound for pound, better lift capacity:** Super Boom gives you more lift capacity per pound of total machine weight.
- **The most attachments:** More than 60 attachments available with more coming all the time. Super Boom™ also works with most competitive attachments.

Stop by today and see for yourself why no other skid steer can compare. LS160 in stock, now-ready to test drive.



NEW HOLLAND



BHM FARM & LAWN EQUIP.

SALES - PARTS - SERVICE
Route 934 - 2 Miles North of Annville, PA
Telephone 717-867-2211

LEHIGH AG EQUIPMENT, INC.

John Deere



PRE-OWNED EQUIPMENT

TRACTORS

- JD 9100, 260 HP, 1523 Hrs., 4 Outlets, (8) 20.8-38 Radials (80%)..... **Coming In**
- JD 7810 MFWD Duals Loaded, 150 HP..... **Coming In**

CORN COMBINES/HEADS

- JD 9400 Corn Combine..... **CALL**
- (2) JD 9500 Corn Combines (1994) w/chopper, 1-1310 Separator Hrs., 1-1335 Separator Hrs..... **Choice \$86,000 \$79,000**
- JD 918 Flex Head..... **Coming In**
- JD 643 Corn Head..... **Coming In**
- JD 643 Corn Head, Oil Bath, Low Tin..... **\$7,500**
- JD 643 Corn Head, Oil Bath, Low Tin..... **\$8,500**
- JD 643 Corn head, Oil Bath, Low Tin..... **\$7,900**
- JD 216 Flex Head Reconditioned..... **Call**

PLANTERS/DRILLS

- (2) JD 450 10' Drills, 7-1/2" Spacing, Press Wheels..... **Call**
- JD 450 12' Drill, 7-1/2" Spacing, Press Wheels..... **\$5,500**
- JD 7200, 12 Row, Flex Fold, Frame Mtd. Coulters, Liq. Fert., Vacuum..... **Coming In**
- JD 7200 6R, Liq. Fert, Inst. Frame Mtd Coulters..... **Coming In**
- Int. Soybean Special 24x6 Press Wheels (Like New)..... **\$4,100**

TILLAGE EQUIPMENT

- IH 710 6 Bottom, 16" Furrow Plow w/Hillside Hitch (sharp)..... **\$3,500**

SELF-PROPELLED SPRAYERS

- GMC Diesel Truck Unit, 1200 Gal. Stainless Steel, 60' Booms, Flo Max Agitator, Foam Markers, Ground Driven John Blue Pump, Semi Floater Tires, Acremeter, Nice Paint..... **\$7,500**

HAY/FORAGE EQUIPMENT

- Triumph 6 Ft. Sickle Bar Mower, Hyd. Drive PTO Pump w/reservoir..... **\$995**
- JD 3940 PTO Forage Harvester..... **\$3,500**
- New Idea 406 Rake, 9.5' Working, Dolly and Regular Hitch, New Teeth, Nice..... **\$2,500 \$1,500**
- NH 499 Rake..... **Coming In**
- JD 348 Baler w/40 Ejector, Elec. Controls..... **Coming In**

LAWN & GARDEN TRACTORS

- JD STX 38..... **\$900**
- JD STX 38 w/Bagger..... **\$795**
- JD STX 38 5-Spd..... **\$1,569**
- JD LX172, 14 Hp, 38" Mower..... **\$1,795**
- JD LX178, 38" Deck, Bagger 1997..... **\$2,999**
- Kubota T1400H 40" Deck, Hydro, Bagger & Mulch Kit..... **\$1,895**
- JD F1145, 72", 4WD, Diesel..... **\$13,995 \$12,995**
- Troy-Bilt Mulcher 13.5 Hp, Hydro..... **\$1,449**
- Middleworth Zero Turn Mower, 46" Deck..... **\$1,499**

WALK-BEHIND MOWERS

- JD 14SZ 21" W/bagger..... **\$449**



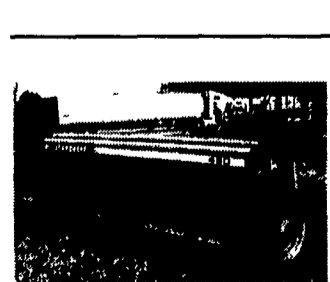
- (2) JD 9500 Corn Combines, 1994, w/Chopper
- (1) 1310 Separator Hrs.
- (1) 1335 Separator Hrs.
- Choice \$86,000



JD LX178, 38" Deck, Bagger, 1997, \$2,999



JD 3940 PTO Forage Harvester



JD 450 12 ft. Drill, 7-1/2" Spacing, Press Wheels \$5,500

Ruppsville Road (Off Old 22 near Kuhnsville and Fogelsville), Allentown
HOURS: Mon.-Fri. 7:30 AM to 5:30 PM; Sat. 7:30 AM to 3:00 PM

(610) 398-2553 (800) 779-3616

fax (610) 398-0650

website www.lehighag.com

