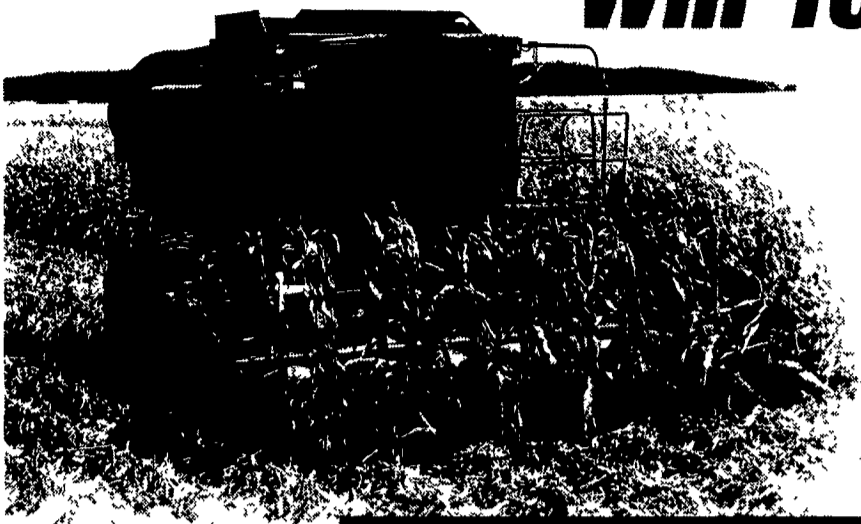


From Harvest To Tillage This

Will Your Combine Handle This Year's Crop?



Build Equity with a Used Combine

Buying a used combine has never been easier thanks to Hooper's special Waiver + Warranty + Guarantee program. This special limited-time program applies to the following Hooper used combines.

THE HOOBER Waiver + Warranty + Guarantee Program

- **Waiver - Waiver** of interest until September 1, 2001
- **Warranty** - A 100% driveline parts **warranty** for 200 hours or thru December 31, 2000... whichever comes first.
- **Guarantee** - Purchase a used combine by October 31, 2000 and Hooper will **guarantee** you a trade-in value of 80% when you upgrade to the next series of combines from Hooper in 2001*.

**Trade guarantee is for the year 2001. Machine must be in similar operating condition.*

Waiver of Interest on Used Combines Until 9/1/2001

Financing Available On All Used Combines From Hooper

1. Interest Waiver Till 9/1/01 with Balance at Standard Rate for Up to 60 Months Total
 - OR
 2. Fixed Low Rate Financing of 4.9% for 36 Months
Fixed Low Rate Financing of 5.9% for 48 Months
Fixed Low Rate Financing of 6.9% for 60 Months
- FINANCING OPTIONS SUBJECT TO CHANGE WITHOUT NOTICE

All Combines are **LOCALLY** Traded Hooper Combines.

- A 21511 1987 CIH - Auto Hdr Control, Tire
- A 16020 1984 IH
- A 17263 1985 IH
- A 22233 1978 IH
- A 22345 1981 IH
- B 17290 1981 IH
- B 18618 1980 IH
- C 30220 1982 IH
- C 15098 1984 IH
- B 18509 1983 IH
- B 17353 1990 CIH
- A 22725 1990 CIH

USED TRACTORS

- | | | |
|---------------------------|----------------------------|-----------------------------|
| A 23288 CIH 4230 MFD ROPS | B 40048 CIH C50 MFD ROPS | A 23287 IH HY 100 ROPS |
| B 40256 CIH 5120 2WD Cab | B 22937 CIH MX 150 MFD Cab | A 23313 IH Super M |
| A 23187 CIH 5140 2WD Cab | A 22784 CIH MX 200 MFD Cab | C 31567 Steiger ST 251 4WD |
| B 19890 CIH 5230 MFD Cab | B 19947 CIH MX 240 MFD | A 23031 Steiger ST 280 |
| C 23186 CIH 5250 | B 40566 CIH MX 240 MFD | C 19589 JD 4560 2WD Cab |
| B 40441 CIH 5250 MFD Cab | B 40462 IH 1086 | B 19587 JD 4560 2WD Cab |
| C 19501 CIH 7110 2WD | C 22860 IH 1086 Cab | A 22559 JD 4650 MFD Cab |
| A 23004 CIH 7120 2WD Cab | A 17811 IH 1086 Cab | B 19590 JD 8400 MFD Cab |
| B 19583 CIH 7120 2WD Cab | A 23190 IH 1086 Cab | C 23046 Case 2590 2WD |
| B 19582 CIH 7120 2WD Cab | B 40092 IH 1486 Cab | B 40271 Case 3294 |
| B 19586 CIH 7140 MFD Cab | B 40463 IH 1586 | B 19898 Case 800 |
| B 40422 CIH 7140 | C 31092 IH 3788 MFD Cab | B 40415 Case 2090 |
| B 40119 CIH 7220 MFD | B 40472 IH 424 | C 31551 Farnall Cub w/Mwr |
| B 19217 CIH 7240 MFD | B 19599 IH 460 D | C 31554 Farnall Cub w/Mwr |
| B 18836 CIH 7250 MFD | C 19755 IH 464 2WD | B 40414 DB 995 |
| B 40565 CIH 8930 MFD | C 31519 IH 656 D | B 19689 Ford 2110 |
| B 40408 CIH 9180 Cab | A 19381 IH 656 H | C 31457 MF 165 |
| A 23476 CIH 9280 4WD | B 40457 IH 674 w/Ldr | C 31481 MF 4840 MFD |
| C 31566 CIH 9350 4WD | A 23312 IH 706 | B 17109 CIH 1840 Skidsteer |
| A 23336 CIH 9370 4WD Quad | C 19554 IH 886 2WD ROPS | C 40023 CIH 1840 Skidsteer |
| | | C 31450 CIH 1845C Skidsteer |



A 23031 Steiger ST280, 4276 Hours, Tires Front - 23 1x34, Rear - 23.1 x 34, Dual Wheels, 280 HP



B 19217 1997 CIH 7240 MFD Cab, 2209 Hours, 20.8 x 42 Duals, 185 HP



B 17774 1997 CIH 8920 MFD Cab, 2073 Hrs, 18.4x42 Duals, 155 HP



A 23004 1988 CIH 7120 2WD Cab, 4935 Hours, Tires Front - 14Lx16 1 - New, Rear - 20 8x38, 3 Pt, 151 HP



A 17811 1979 IH 1086 2WD Cab, 4534 Hrs, Tires: Front - 11.00x16, Rear-20.8x38, 540/1000 Pto, 131 HP



C 19554 1977 IH 886 2WD ROPS, 4205 Hours, Tires Rear - 18.4x34, Diesel, 540 Pto, Rebuilt Engine, 90 HP

Financing Available On All Used Tractors From Hooper

Special Programs Available for Under 100 HP Tractors

- 1) 6 Month Interest Waiver
- 2) Fixed Low Rate Financing - as Low as 7.9% for 36 Months
- 3) Split Rate Financing - 5.25% for the First 12 Months
- 4) Lease Options

Special Programs Available for 100+ HP Tractors

- 1) 6 Month Interest Waiver
- 2) Fixed Low Rate Financing - as Low as 6.9% for 36 Months
- 3) Split Rate Financing - 4.9% for the First 12 Months
- 4) Lease Options

Financing Options Subject to Change Without Notice

Hooper

LOC TAG

- B 22821
 - C 23106
 - A 23079
 - B 21878
 - A 23080
 - C 22673
 - C 21888
 - A 21890
 - A 22107
 - A 21899
 - A 17186
 - C 17230
 - A 17331
 - B 17595
 - C 22155
 - A 22461
- *Estimated h*

Call a Hooper

USED DISCS

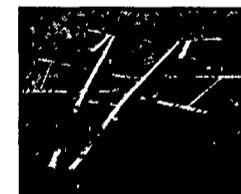
- | | |
|------------------------|--------------------------|
| B 40303 CIH 496 | B 19435 KR 4918 27' |
| B 18976 IH 496 34' | A 23270 KR 4921 Disc |
| A 23238 IH 475 | B 19610 KR 4942 WR 22 5' |
| A 23172 KR 1577 | B 19354 MF 820 23' |
| A 23166 KR 2483 NR | B 16620 ML 28' |
| B 18970 KR 4907 25' | A 23477 Pittsb 13' Disc |
| 40492 KR 4907-25' Disc | B 19711 TW 58102 20' |
| B 19694 KR 4915A | A 23231 TW 12' |

USED HAY & FORAGE

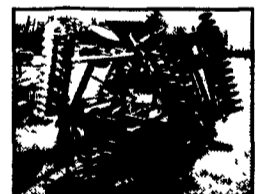
- | | |
|---------------------------------|--------------------------------|
| B 40139 CIH 8545 Baler | C 31455 CIH 8830 Mower Cond |
| B 18906 CIH 8580 Baler | B 40078 CIH DC515 Mower Cond |
| A 40030 CIH 8585 Baler | C 22296 JD 1470 12' Mower Cond |
| A 23165 Hstn 4900 Baler | A 22880 NH 1431 12' Mower Cond |
| B 40324 Hstn 4900 Baler | A 23226 NH 499 Mower Cond |
| C 31177 IH 435 Baler w/Thrower | A 23323 NH 499 Mower Cond |
| C 23191 JD 530 Round Baler | B 40455 NH 488 Mower Cond |
| A 19959 NH 650 Round Baler | A 23279 NH 40 Blower |
| B 17722 CIH 1490 12' Mower Cond | |



A 22955 DMI Tiger II 5 Shank Subsoiler, Auto-Reset, 12' Working Width, SALE PRICE \$8,500



B 19636 DMI 530 Subsoiler w/ Disc Gangs on Front, Lead Shanks, Disc Levelers on Rear, Field Ready, SALE PRICE \$17,500



B 19435 Krause 4918 27' Disc, Standard Gang, Center & Wing Duals, Packer Hitch & Hoses, New Blades, SALE PRICE \$9,900

USED TILLAGE

- | | |
|-------------------------------|------------------------------------|
| A 23010 IH 183 4RN Cultivator | B 19359 DMI 25 Crumbler |
| B 18068 MF 18 Cultivator | B 17326 UM 29 Basket |
| B 18067 UM Cultivator | B 18505 BR 5 Shnk Subsoiler |
| B 19931 KR 3115A Landsman | DMI 500 3 Arm Subsoiler |
| B 22431 KR 6331 Landsman | B 19636 DMI 530B Subsoiler |
| B 40325 SF 4324 24' Landsman | DMI HD 3pt Subsoiler |
| B 17476 IH 145 4x18 Plow | A 23032 DMI 7 Shnk Subsoiler |
| B 17477 IH 145 4x18 Plow | B 22866 DMI 7 Shk 730 EcoLo-Tiger |
| C 31569 IH 510 4X16 Plow | B 19409 DMI ET500 Subsoiler |
| A 23289 IH 700 Plow | A 22955 DMI 5 Shnk Tiger II Subslr |
| B 17038 IH 710 Plow | BR CPP 10 Chisel Plow |
| C 31568 IH 710 8X18 Plow | B 40252 DMI 11 Slicer Chisel Plow |
| B 40428 CIH 720 6 x 18 Plow | C 19130 FR 10 12 Chisel Plow |
| B 19994 BR 15 Cultmulcher | A 23196 KR 2860 Chisel Plow |
| C 31456 BR 12 Cultpacker | B 40416 Lulist 12' Chisel Plow |
| A 23282 DL 19' Packer | A 23474 SF 4212-09 Chisel Plow |
| A 19932 BR 16 Packer | |

USED PLANTERS AND DRILLS

- | | |
|-------------------------------|----------------------------------|
| B 17790 IH 800 6RN Planter | B 16662 GP 15' Drill |
| C 23011 IH 800 4RN Planter | B 40206 GP 15' Drill w/Hitch |
| C 31352 IH 800 6RN Planter | B 40446 GP 20' NT Drill |
| B 19754 JD 7000 8R Planter | A 23029 GP 400782 24' Drill |
| B 16778 JD 7240 8R Planter | B 18940 GP 30' Drill |
| A 23468 Kinze 2500 8R Planter | B40420 GP 30' Conventional Drill |
| B 19387 WH 5100F 8RN Planter | B 40207 IH 510 Drill |
| B 30373 WH 5400 6RN Planter | B 40208 IH 510 Drill |
| B 40436 CIH 5100 Twin Drill | C 22782 JD 8300 21x7 Drill |
| A 23119 GP 10' EW NT Drill | A 22883 JD 8350 12' Drill |
| A 23472 GP 10' EW NT Drill | C 31560 JD 8250 14X7 Drill |



A 22970 1998 CIH 2388 2WD, 1029 Hours, Field Tracker, Specialty Rotor, Rock Trap, GLM, Chopper, Tires: Drive - 30.5 x 32, Steer - 14.9 x 24



A 23062 1995 CIH 2188 2WD, 1810 Hours, Field Tracker, Specialty Rotor, Rock Trap, GLM, Chopper, Tires: Drive - 30.5 x 32, Steer - 14.9 x 24



B 40060 1987 CIH 1680 2WD, 3061 Hours, Standard Rotor, Auto Header Control, Chaff Spreader, Tires: Drive - 30.5 x 32, Steer - 18.4 x 16 1

- A** INTERCOURSE, PA
800 732-0017
- B** MIDDLETOWN, DE
800 341-4028
- C** McALISTERVILLE, PA
800 433-6679

HOOBER

HOOBER, Inc
THREE LOCATIONS

For a complete Hooper inventory visit our web