

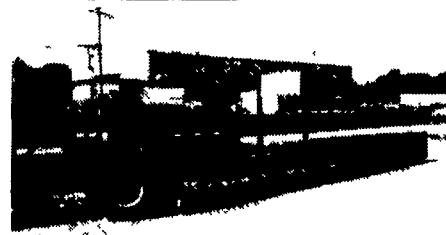
1987 AUTOCAR DK64B



1987 VOLVO-WHITE



1987 CUSTOM 20-TON



1995 FONTAINE 48'



INTERNATIONAL M-623



1979 INTERNATIONAL F2674



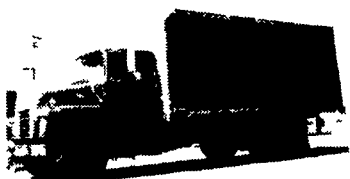
1985 GMC BRIGADIER, w/NATIONAL CRANE



CHEVROLET KODIAK XL



1930 FORD MODEL A, RESTORED



FORD 7000



(1 OF 4) 1987 HACKNEYS



LANDPRIDE 15-48

A LARGE AUCTION

Reichs Ford Truck & Tractor

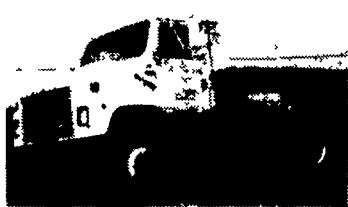
1990 INTERNATIONAL 8200 Tandem, 200 Duramax, 6-spd., air ride, slider; 1987 INTERNATIONAL 9370 Eagle, sleeper, 425 Cat, 15-spd., air ride; 1984 MACK ROBERT, 300 Mackodyne, 6-spd., tandem, 36 rear; 1982 FORD LN9000, single-axle, 240 Cummins, 7-spd.; 1987 INTERNATIONAL 8-2678, single-axle, L-10-270L, 7-spd., air ride, dump valve, wet-line, sliding 1st wheel/house trailer hitch, many extras; (2) Yard lockers, Ford gas engines, AT; 1988 CHEVROLET C-70 Goose-neck Tractor, Cat 3206, 5 & 2, air brakes, 8' flat bed, very clean; 1987 VOLVO-WHITE Conventional Sleeper, Detroit, air ride, loaded.

(8) ROAD TRACTORS
 1990 GREAT DANE 48' x 102" Trailer, slider, Thermo-King, recent DOT; 1987 TRAILMOBILE 48' x 98" Trailer, slider, carrier, recent DOT; (4) 1987 HACKNEY 24' Reefer Bodies, 48" roll-up rear doors, side doors, Carrier Mistral 800 units; 14' HACKNEY Reefer Body, roll-up door; 1979 Ford LN-9000 Tandem, 22' Hackney refrigerated, Cummins, 10-spd.; (8) Various THERMO-KING Refrigerated Takeout Units.

(9) REFRIGERATED
 1983 FORD F-250 4x4 Pickup, Meyer snow plow, slide-in dump bed; 1985 DODGE 250 4x4 Pickup; (2) 1981 GMC 1/2-Ton Pickups, V-8, AT, 8' bed; 1979 GMC 3/4-Ton Pickup, V-8, AT, runs every day; 1990 CHEVROLET S-10 Ext. Cab Pickup, V-8, AT, AC; 1989 GMC 2500 VAN, V-8, AT, AC, complete set of shelving; 1993 CHEVROLET 3500 Van, dual wheels, 13M GVW, shelving, ideal plumber's or electrician's truck, And Other Trucks.

(10) PICKUP TRUCKS & VANS
 1930 FORD Model A Dump Truck, restored, excellent condition, MACK B61 Tractor, single-axle, 1955 DIAMOND T-Single-Axle Tractor; (2) INTERNATIONAL KB-7s, chassis and cabs, 1960 REO Single-Axle Tractor, Gold comet, 1962 FREIGHTLINER, NH195, 5 & 4, wrecked, MACK B61 Tandem Chassis.

(50) TRAILERS
 1995 FONTAINE 48' Drop-Deck Flat, air ride, spread-axle, 22 5 L-Pro radial tires, 1992 FRUEHAUF 45' Flat Trailer, spread-axle, air



1987 INTERNATIONAL S2375



INTERNATIONAL S1924, LOW MILEAGE



1990 INTERNATIONAL 4700



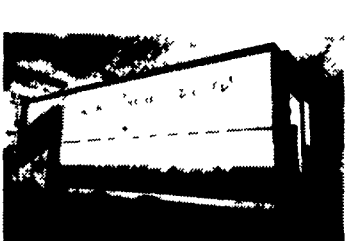
1996 INTERNATIONAL 4700



1996 INTERNATIONAL 4700



(APPROX. 50) TRAILERS OF VARIOUS MAKES & MODELS



(1 OF 4) 1987 24' HACKNEYS

(8) ROAD TRACTORS
 1990 INTERNATIONAL 8200 Tandem, 200 Duramax, 6-spd., air ride, slider; 1987 INTERNATIONAL 9370 Eagle, sleeper, 425 Cat, 15-spd., air ride; 1984 MACK ROBERT, 300 Mackodyne, 6-spd., tandem, 36 rear; 1982 FORD LN9000, single-axle, 240 Cummins, 7-spd.; 1987 INTERNATIONAL 8-2678, single-axle, L-10-270L, 7-spd., air ride, dump valve, wet-line, sliding 1st wheel/house trailer hitch, many extras; (2) Yard lockers, Ford gas engines, AT; 1988 CHEVROLET C-70 Goose-neck Tractor, Cat 3206, 5 & 2, air brakes, 8' flat bed, very clean; 1987 VOLVO-WHITE Conventional Sleeper, Detroit, air ride, loaded.

(9) REFRIGERATED
 1983 FORD F-250 4x4 Pickup, Meyer snow plow, slide-in dump bed; 1985 DODGE 250 4x4 Pickup; (2) 1981 GMC 1/2-Ton Pickups, V-8, AT, 8' bed; 1979 GMC 3/4-Ton Pickup, V-8, AT, runs every day; 1990 CHEVROLET S-10 Ext. Cab Pickup, V-8, AT, AC; 1989 GMC 2500 VAN, V-8, AT, AC, complete set of shelving; 1993 CHEVROLET 3500 Van, dual wheels, 13M GVW, shelving, ideal plumber's or electrician's truck, And Other Trucks.

(10) PICKUP TRUCKS & VANS
 1930 FORD Model A Dump Truck, restored, excellent condition, MACK B61 Tractor, single-axle, 1955 DIAMOND T-Single-Axle Tractor; (2) INTERNATIONAL KB-7s, chassis and cabs, 1960 REO Single-Axle Tractor, Gold comet, 1962 FREIGHTLINER, NH195, 5 & 4, wrecked, MACK B61 Tandem Chassis.

(50) TRAILERS
 1995 FONTAINE 48' Drop-Deck Flat, air ride, spread-axle, 22 5 L-Pro radial tires, 1992 FRUEHAUF 45' Flat Trailer, spread-axle, air

NEW & USED TRUCK & TRAILER PARTS
 2-Spd. Rears; 4-, 5-, 6-, 9-, 10- and 13-Spd. Transmissions; Tandem Rears; ROCKWELL S5HD 44M Assembly; Truck Suspensions; Trailer Axles; PTO's; Fuel Tanks; Tool Boxes; Gas and Diesel Engines; Engine Parts; Bell Housing; Seats; Truck Pneumatic Blowers; Injection Pumps; Truck Frames; Chains; Air Compressors; INTERNATIONAL Truck Doors and Hoods; A large Quantity of New CHEVROLET and GMC Parts; New INTERNATIONAL and FORD Parts; New, Used and Recapped Tires; Aluminum Wheels; Hydraulic Jacks; Transmission Jacks; Tools; Lift Gates; Radiators; 5 Hp. Shop Air Compressor; Filters; And Hundreds of New and Used Take-Off Parts and Accessories.

EXITS 55/56 INTERSTATE 70 INSPECTION: FRIDAY, OCTOBER 13th • 9 A.M. to 4 P.M. DIRECTIONS: The auction will be held at the Frederick Fairgrounds in Frederick, Maryland. From westbound Interstate 70, take Exit 56 onto Route 144 or East Patrick Street. From eastbound Interstate 70, take Exit 55 onto South Street to Franklin to the Fairgrounds. TERMS include cash or approved check on day of auction with positive identification required for registration. Not responsible for accidents. Food and facilities available on-site.



BOBCAT 763, BOBCAT 743 NISSAN 3-STAGE MAST BOBCAT 3023



NEW HOLLAND L785



NO BUYER'S PREMIUM
 JAMES G. COCHRAN • CEO/AUCTIONEER - THOMAS E. BIKLE • DIRECTOR OF MARKETING

J.G. Cochran

Professional Construction & Industrial Equipment Auctioneers

7704 Mapleville Rd., P.O. Box 222, Boonsboro, MD 21713-0222 • (301) 739-0538 • TOLL FREE (MD) 1-800-310-2844 • FAX (301) 432-2844
 NATIONALLY RECOGNIZED - AWARD-WINNING AUCTIONEERS SINCE 1972

