

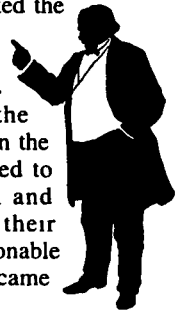


OCTOBER 9-15, 2000

FULL HUNTER'S MOON, OCTOBER 13.

**TUXEDO INVENTED**

On October 10, 1886, in Tuxedo Park, New York, men's fashions took a step—well, either forward or backward, depending upon your point of view. That was the day Griswold Lorillard invented the tuxedo. The word comes from *P'tuksit*, the Delaware Indian word for "wolf." The Delawares divided themselves into three groups, with the turtle, the turkey, and the wolf as their totems. In the 18th century, the word was anglicized to *Tuxedo*, from which Tuxedo Park and Tuxedo Lake, in New York, took their names. When the area became a fashionable resort, the tuxedo—without tails—became the mode of dressing down!



*Every generation laughs at the old fashions but religiously follows the new.*

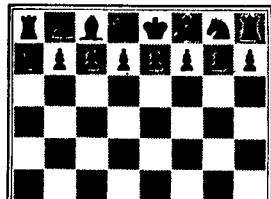
—Henry David Thoreau

**TIP OF THE WEEK**

To clean silver, wrap it securely in tin foil and add baking soda and water. Soak for 20 minutes, then polish.

**CHESS PIE**

- 1/4 cup (1/2 stick) butter
- 1/2 cup white sugar
- 1 cup brown sugar
- pinch of salt
- 3 eggs
- 1-1/2 teaspoons vanilla extract
- 2 tablespoons flour
- 1/2 cup cream
- 1 cup chopped pecans
- 1 unbaked 9-inch pie shell



ingredients and pour into the pie shell. Bake at 375°F for about 35 minutes, or until an inserted toothpick comes out clean.

Makes 6 to 8 servings.

www.almanac.com

**The OLD FARMER'S WEATHER PROVERBS**



*If the full Moon rises red, expect wind.*

*Three white frosts, then a storm.*



**NOW ON SALE**

The Old Farmer's Almanac 2001 Edition Available in bookstores and on newsstands, or mail a check or money order for \$6.94 to The Old Farmer's Almanac, Dept UF, P.O. Box 520, Dublin, NH 03444, or call 800-729-9265, ext 220

**Pa. Weekly**

13 Livestock Auctions Friday, Sept. 29

Report Supplied By PDA

**13 LIVESTOCK AUCTIONS**

**CATTLE** 5166...Compared with 4722 head last week and 5047 head a year ago. Slaughter steers .50 to 1.50, spots 3.00 higher on Kosher type animals, sl. heifers mostly 1.00 to 3.00 higher, sl. cows uneven with a weak undertone, sl. bulls steady to weak.

**SLAUGHTER STEERS:** High Choice and Prime 2-4 65.85-71.85, Choice 1-3 64.50-67.75, few late week sales to 69.50, Select and Low Choice 2-3 62.00-65.50, Select 1-3 58.00-64.50, Standard 1-2 51.50-58.00.

**HOLSTEINS:** High Choice and Prime 2-3 60.75-62.25, Choice 2-3 54.25-61.00, Select 1-2 51.25-55.75, Standard 1-2 45.00-50.00.

**HEIFERS:** Choice few Prime 2-4 63.25-67.50, Select 1-3 58.00-63.75, Standard 1-2 48.00-57.25.

**COWS:** Breakers 75-80% lean 39.00-44.75, Boners 80-85% lean 35.00-40.75, Lean 85-90% lean 31.00-37.50. Shells 30.00 and down.

**BULLOCKS:** Select 1-3 56.00-61.75. **BULLS:** Yield Grade 1 1000-2500 lbs 49.00-54.75, Yield Grade 2 900-2400 lbs 43.00-49.00.

**FEEDER CATTLE:** **STEERS:** Medium and Large 1 300-500 lbs 85.00-98.00, 500-700 lbs 73.00-86.00, Medium and Large 2 300-500 lbs 79.00-88.00, 500-700 lbs 66.00-79.00; **HEIFERS:** Medium and Large 1 300-500 lbs 74.00-90.00, 500-700 lbs 70.00-78.00, Medium and Large 2 300-500 lbs 63.00-80.00,

500-700 lbs 55.00-74.00; **BULLS:** Medium and Large 1 300-500 lbs 77.00-91.00, 500-700 lbs 71.00-87.00, Medium and Large 2 300-500 lbs 65.00-78.00.

**CALVES** 3432...Compared with 3118 head last week and 4025 head a year ago. Vealers mostly steady...**VEALERS:** Choice 130-310 lbs 85.00-92.00, Good 120-290 lbs 61.00-84.00, Standard and Good 75-115 lbs 35.00-60.00, Utility 50-100 lbs 10.00-35.00; **FARM CALVES:** Holstein bull calves 5.00 to 20.00 higher, Holstein heifers 20.00 higher continuing to push the price limits. No 1 Holstein bulls 90-125 lbs 115.00-170.00, few late sales to 180.00. No 2 80-125 lbs 70.00-127.00, No 1 Holstein heifers 80-115 lbs 290.00-460.00, No 2 80-120 lbs 150.00-300.00.

**Beef type bulls and heifers** 75-135 lbs 100.00-170.00.

**HOGS** 1394...Compared with 1321 head last week and 1566 head a year ago. Barrows and gilts .75 to 1.00 higher, sows steady to 1.00 lower. **BARROWS AND GILTS:** 49-54% lean 220-265 lbs 38.10-41.75, 45-50% lean 220-275 lbs 37.00-39.00, 40-45% lean 240-300 lbs 32.60-37.00. **SOWS:** US 1-3 300-500 lbs 30.00-34.00, 500-700 lbs 34.00-37.00. **BOARS:** 15.00-17.00.

**FEEDER PIGS** 386...Compared with 201 head last week and 387 head a year ago. US 1-3 30-45 lbs 12.00-26.00, 45-70 lbs 40.00-57.50- per head.

**SHEEP** 1324...Compared with 1523 head last week and 1987 head a year ago. Slaughter lambs 5.00 to 15.00 higher...**SLAUGHTER LAMBS:** Choice 40-70 lbs 100.00-135.00, 70-110 lbs 85.00-110.00, 110-140 lbs 75.00-90.00, Good and Choice 40-80 lbs 62.50-85.00.

**SLAUGHTER SHEEP:** 30.00-50.00. **TWO GRADED FEEDER PIG SALE** 1093...Compared with 846 last week and 848 head a year ago...Feeder pigs steady to 10.00 lower...US 1-2 30-40 lbs 107.00-111.00, 40-50 lbs 85.00-105.00, 50-75 lbs 75.00-96.00; US 2 30-45 lbs 81.00-100.00, 45-60 lbs 62.00-86.00; Slaughter: 20-35 lbs 110.00-1775.00, 40-75 lbs 45.00-66.00- per cwt.

**New Holland Dairy**

New Holland Sales Stables Report Supplied by Auction Wednesday, Oct. 4, 2000

182 DAIRY COWS, 96 HEIFERS, 12 BULLS. MARKET STEADY. LOCAL FRESH COWS 410.00-1500.00, FEW 1525.00-1600.00. LOCAL SPRINGERS 835.00-1225.00. BETTER FRESH COWS 1600.00-1800.00. LARGE HEIFERS 1325.00-1460.00, 2 AT 1500.00 AND 1510.00, SMALL 835.00-1250.00. SHORTBRED HEIFERS 600.00-1175.00, FEW 1275.00-1300.00. OPEN BREEDING AGE HEIFERS 885.00-1025.00. BULLS 410.00-735.00, PUREBREDS 310.00-760.00. 2 HERDS 450.00-1450.00. UPSTATE LOADS FRESH 925.00-1500.00, 2 AT 1650.00. 13 HEAD FRESH HEIFERS 1050.00-1675.00. FRESH HEIFERS 725.00-1575.00, 1 AT 1800.00. SMALL OPEN HEIFERS 485.00-785.00.

**Free Enterprise...**



Two words that business people around the world take very seriously. Members of the Pennsylvania Livestock Auction Association take free enterprise very seriously too. They realize that producers have a choice when it comes time to buy and sell livestock and they are dedicated to making sure that producers can take advantage of the free enterprise system in the best way possible... at the local auction market.

Pennsylvania livestock markets strive to provide you with the kind of service you deserve as a business person and a friend. You can be assured that the honesty, integrity and solid marketing fundamentals found at your local market will ensure nothing less than the true market value for your livestock.

**PA LIVESTOCK AUCTION ASSOCIATION MEMBERS**

- Belleville Livestock Market, Inc.**  
570-935-2146  
Belleville
- Eighty-Four Auction Sales, Inc.**  
412-222-9965  
Eighty-Four
- Middleburg Auction Sales, Inc.**  
570-837-2222  
Middleburg
- Dewart Livestock Market, Inc.**  
570-538-9835  
Dewart
- New Holland Sales Stables, Inc.**  
717-354-4341  
New Holland
- Pennsylvania Livestock Auction, Inc.**  
412-627-9585  
Waynesburg
- Jersey Shore Livestock, Inc.**  
570-398-0111  
Jersey Shore
- Greencastle Livestock Market, Inc.**  
717-597-2171  
Greencastle
- Lancaster Stockyards, Inc.**  
717-394-2619  
Lancaster
- Leesport Farmers Market, Inc.**  
610-926-1307  
Leesport
- Mercer Livestock Auction, Inc.**  
412-662-2910  
Mercer
- New Wilmington Livestock Auction, Inc.**  
412-946-2921  
New Wilmington
- Union City Livestock Auction**  
814-438-3481  
Union City
- Carlisle Livestock Market, Inc.**  
717-249-4511  
Carlisle
- Valley Stockyards, Inc.**  
570-888-9333  
Athens
- Meadville Livestock Auction**  
814-763-2240  
Conneautville
- Morrison Cove Livestock Auction**  
814-793-2311  
Claysburg

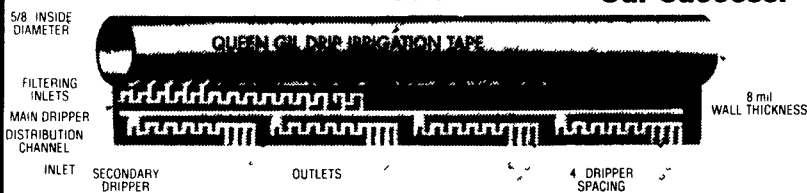
**IDEAL LEAF TOBACCO COMPANY**

If you farm tobacco and have old 609 tobacco on your farm or 41 type tobacco, please drop us a card telling how much you have. I have someone that could possibly be interested in the year old tobacco. Ideal Leaf Tobacco Co. is also considering opening a tobacco auction at Kirkwood.

**Ideal Leaf Tobacco Co.**  
Rt. 3 Box 208, Farmville, VA 23901

**Irrigation... Not Irritation!**

Your Benefit From the **QUEEN GIL Tape Created Our Success!**



**DRIPPERS EVERY 4 INCHES = 16 GPH, 32 GPH, 64 GPH PER 100 FEET!**

Thousands of professional farmers worldwide have abandoned their old fashioned drip tapes in favor of **Queen-Gil Drip Irrigation Tape**. The **Queen-Gil Drip Tape** Provides Higher Quality, Higher Yields, Better Crops - maximizing your "per-acre" profit potential!

Very attractive price!  
10 drippers per yard  
8 mil wall thickness  
inside diameter 5/8  
Available in 1650 3300  
and 6 600 foot rolls

WHOLESALE RETAIL  
**Martin's Produce Supplies**  
625 Britton Rd. • Shippensburg, PA 17257  
**(717) 532-5918**  
**TOLL FREE 1-888-381-8641**