

USED TRUCKS FOR SALE

1997 FORD MAXIVAN, AT, 5.4L V8,
15 Passenger, 21K miles **\$18,900 \$16,900**
1996 FORD F250, Ext Cab 4x4, Power Stroke Diesel,
5-Spd, No A/C, Short Bed, Red, 72K Miles **\$17,500**
1995 DODGE RAM 2500 4x4, AT, A/C, Cummins Turbo
Diesel, 8800 GVW, Blue, 67K Miles **\$16,800**
1995 DODGE RAM 2500 4x4, Cummins Diesel,
AT, A/C, PW, PL, Black & Beige, 111K Miles **\$15,700**
1994 DODGE RAM 2500, Cummins Diesel,
2WD, AT, A/C, Green, 157K Miles **\$9,500**
1994 FORD F450 SUPER DUTY, 2WD, 12' Box,
5 Spd Diesel, No Air, 68,000 Miles **\$14,500**
(Without Box) **\$13,500**
1989 DODGE MAXIVAN, 15 Passenger, AT, A/C,
139K Miles **\$3,500**
1987 CHEV. C30 DUALY, 8ft Bed Setup for Towing,
4 Spd, 2WD, No A/C **\$5,500**

SCHAEFFERSTOWN AUTO & TRUCK SALES

Rt. 501, 1-1/2 miles South of
Schaefferstown
717-949-2812

66 Montone Dump Trailer
28' \$1500; 75 Trans-Craft
Drop Deck 44' \$1,000
215-249-1826

2000 36 ft., Gooseneck flat
bed w/ramps, tool box,
spare tire, exc. cond.,
\$6,900 (717)354-7992.

2000 Econolite, 23 ft., 12
ton trailer, air brakes,
exc. cond., w/spare tire,
r a m p s \$ 6 , 9 0 0
(717)354-7992.

97 Dodge Dakota CC 4x4
SLT V6, AT, all power
equip fiberglass Tonneau
cover, other accessories,
44,300 mi., ABS fog LTS,
ex. cond. \$17,100
(717)485-5390.

22' Van body, Morgan,
FRP., ex cond, \$1500.
410-810-2883

1979 Volvo F611, 20'
body, 28,000 gvw, in-
cludes shelving for potted
& tray plants, runs great,
\$2700 OBO. GBF
717-768-8127.

1977 Chevy cattle truck,
12' alum box, good cond,
motor needs work.
717-867-2489

1993 Kenworth T600, 15'
steel dump, 4.0 Detroit,
560 Jake, \$28,000.
304-229-1218

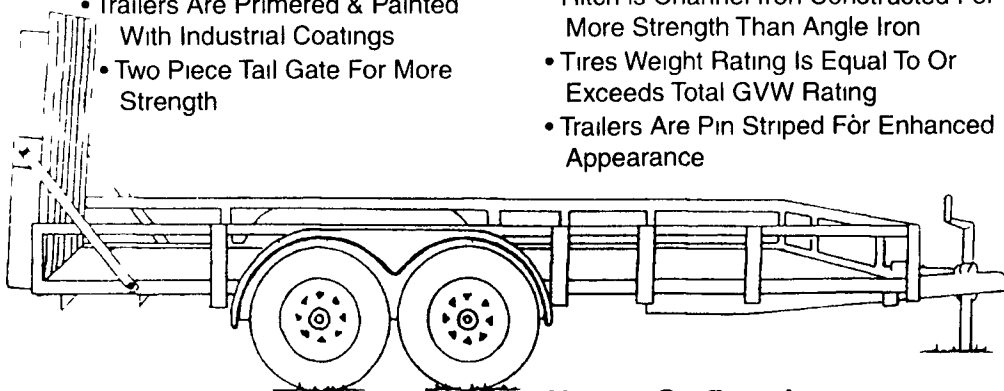
1997 Peterbilt 379, 430 De-
troit, 560, 63" bunk, super
10 trans, all alum wheels,
Jake 58,000. 304-229-1218

16' truck bed, 42" sides
w/grain chute, \$250. Lanc
Co. 717-284-2115.

Why Buy A PA International Trailer?

- 6 Month Trailer Warranty
- Tire Warranty In Writing
- Dexter Axles With 1-Year Warranty
- Tear Drop Fenders For Added Strength
- Flooring Is 2" Hemlock Planking
- DOT Approved Lights Are Better Protected
- All Wiring Is Run Through Conduit
- Trailers Are Primered & Painted With Industrial Coatings
- Two Piece Tail Gate For More Strength

- 1" Solid Pin For Gate Hinge Is More Reliable
- 2000' Jack With Bottom Foot & Emergency Break Away Kit Installed
- Includes Safety Chains & Tie Down Pockets
- Bottom Of Trailer Is Primered & Painted, Not Left Unfinished
- Hitch Is Channel Iron Constructed For More Strength Than Angle Iron
- Tires Weight Rating Is Equal To Or Exceeds Total GVW Rating
- Trailers Are Pin Striped For Enhanced Appearance



Notary On Premises
Temp. Tags Available

Over
300
Trailers
In Stock!

KUTZ FARM EQUIPMENT, INC.

Pine Grove, PA • 570-345-4882

Over
40 Models
Including
Dumps!

Providence

Chrysler • Plymouth • Dodge • Jeep
Part of the Lancaster County Motors Family of Dealerships

NEW 2001 DODGE RAM REG CAB 2500 SLT 4x4

Cummins Turbo Diesel auto
trailer tow engine block heater
fog lamps bedliner #10889
MSRP: \$33,950.
-\$3,850 Providence Disc.
-\$1,000 Factory Rebate.
-\$500 Farm Bureau Rebate
NOW \$28,600!



NEW 2001 DODGE RAM 2500 QUAD CAB SLT 4x4

Cummins Turbo Diesel sport pkg auto trailer tow camper special #10659
MSRP: \$36,800, -\$4,150 Providence Discount,
-\$1,000 Factory Rebate, -\$500 Farm Bureau Rebate
YOU PAY ONLY \$31,150!

PRE-OWNED SPECIALS!

'99 Dodge RAM SLT QUAD CAB 2500 4x4
Cummins Turbo Diesel! Sport pkg, auto, tow pkg, 17K miles!
NOW ONLY \$29,350!

'97 Dodge RAM CLUB CAB SLT 4x4
Cummins Turbo Diesel! 5 speed, A/C, PW, PL, cruise, matching cap!
NOW ONLY \$23,850!

'99 Dodge RAM REGULAR CAB SLT 4x4
5 speed, A/C, leather, power windows/locks, only 12K miles!
NOW ONLY \$22,250!

SALES MON-FRI: 9AM-9PM
HOURS: SATURDAY
9AM-4PM

Call Toll-Free **877-288-9996**
or Phone **284-9900**

804 Lancaster Pike, Quarryville
Rt. 272, Just South of Lancaster
www.providenceautos.com
e-mail: Vehicles@lannews.infi.net

Only 10 Minutes
East of Lancaster
1-800-223-KEIM

(717) 768-8225
(800) 223-KEIM

RT. 30 Lincoln Highway East
Paradise, PA 17562



89 CHEVY S10 BLAZER
2 Door, 4x4, 6 Cyl,
AT, A/C, PW, PL,
89,000 Orig Miles, P2107
\$5,900



**(2) BOSS 8 ft.
SNOW PLOWS**
New & Almost New
Starting at **\$2,495**



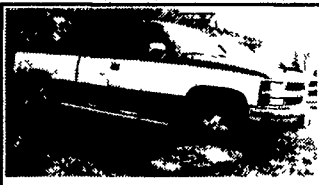
**(2) 2000 CHEVY G30 CUT
AWAY HIGH CUBE VANS**
14' & 16' Bodies, 350, AT, A/C,
Both White



98 CHEVY K2500 4X4
Extend Cab, 350 V8, AT, A/C,
PW, PL, 36,000 Mi, White



NEW 99 CHEVY 1 TON
Reg Cab 2WD, Stake Body,
350 V8, AT, A/C
MSRP \$27,206 Sale **\$20,572**



**94 CHEVY FULL SIZE
EXTENDED CAB**
4x4, 8 Cyl, AT, A/C,
PW, PL, #00442A
\$15,900



**98 CHEVY FULL SIZE
EXTENDED CAB**
2WD, 8 Cyl, AT, A/C, PW, PL,
Cass, 23,000 Mi
\$19,900



91 CHEVY K1500 4x4
Extend Cab, 350 V8, AT, A/C,
PW, PL, Cass, Black & Gray
\$9,900



HOSTETLER

Truck Bodies & Trailers

717-667-3921

Milroy Exit off Rt 322
Between Lewistown & State College



1982 4 Horse King Trailer, Large Dressing
Room Rear Ramp Solid Condition
\$2,795

**Financing
&
Leasing
Available**



Moritz Skid Loader Trailers 82 Wide Between
Fenders Rubber Torsion Axles Treated Pine Floor
10 000# Drop Leg Jack Spare Wheel & Tire Adj
Coupler 10 000 GVW Available in 7 Colors
16 Long **\$2,875**
18 Long **\$3,030**



Moritz Slant Load Bumper Pull Live stock
Trailers Dressing Room 7 High Starting at
2 Horse **\$3,650**
3 Horse **\$3,950**



Corn Pro Bumper Pull Livestock Trailer Corn
Pro Rubber Torsion Axles Treated Pine Floor
6 x16 3500# Axles **\$3,575**
6 8 Wide x 16 Long 3500#Axles **\$3,825**
6 8 Wide x 16 Long 6000#Axles **\$4,195**



EZ Dumper 5 x8 Dump Trailer Single Axle
5000# GVW Electric Hydraulic Hoist
\$2,895

FEATURE TRAILER

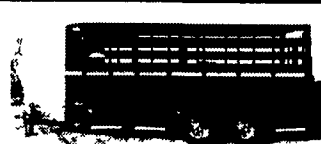
EBY ALUMINUM BUMPER PULL LIVESTOCK TRAILER



**Rubber Torsion Axles,
1/2 Slider on Rear,
Divider Gate, Escape Door,
6'8" Wide x 6'6" High x 16' Long**
SPECIAL \$7,995



Chevy Dually Pick Up Beds with
Fiberglass Leer Cap, New Condition
With Tailgate & Taillights.
\$1,095



New Design Moritz Livestock Trailers Semi
Round Front, New Sides and Rear
6 x16 7000# GVW **\$3,575**
6 8 x 16 Long 7000# GVW **\$3,775**



Used 16' Deck Over Trailer Like New
Condition, Heavy Jack, Adj Coupler,
10,000# GVW, Electric Brakes
\$2,995



Ford 4000 Tractor, 4 Cylinder Gas, Three
Point Hitch, PTO, Shuttle Shift, 6' Bucket
\$3,800



12 Eby Cattle Truck Bed, Roll Up Rear &
Drop Ramp, Fits 1 Ton Truck with 84" CA
\$2,995



E Z DUMPER TRUCK INSERT DUMP
6 000# Capacity, Self Contained
\$1,895