

**Okla. National Stockyards**

Oklahoma City, OK  
October 4, 2000

Report Supplied By USDA

Oklahoma National Stockyards - Weekly Cattle Summary

Compared to last week: Steer calves steady to 3.00 lower, heifer calves steady with last week's decline. Feeder cattle steady in limited trade. Demand light to moderate for calves. Supply mostly calves. Yearlings in light supply, particularly those suited for northern feedlots. Early season wheat grazing prospects are very questionable given dry conditions throughout major grazing belt.

Many feedlots already stuffed with calves. Thus calf outlets are fairly narrow and calf run is well underway. Calf quality plain through attractive. Quality of yearlings plain, few loads attractive. Calves in medium to fleshy conditions. Feeders in slightly thin to moderate flesh. Calf weigh-ups mostly average; yearling cattle in average to full condition.

Lean slaughter cows and slaughter bulls 1.50-2.00 lower; boner and breaker cows steady. Demand good for better cows, light for thin cows and bulls. Southern packers out of the market as fall culling season is underway. Majority of cows traveling to far north to kill. Plenty of cows returned to country for another try at raising a calf but good quality types scarce. Total of 715 cows and bulls sold with 40 percent going to packers.

Receipts this week 11,150; last week 8,838; last year 9,808.

Supply consisted of 53% yearlings and calves over 600 lbs; 41% calves under 600 lbs; 6% cows and bulls. Heifers comprised 36% of feeder and calf supply.

Prices follow with weighted average weight and price in parenthesis.

Feeder Steers: Medium and Large 1: Calves: 350-400 lbs (386 lbs) 108.00-110.00 (109.38); 400-450 lbs (428 lbs) 99.00-109.00 (101.33); 450-500 lbs (475 lbs) 95.00-101.00 (97.31); 500-550 lbs

(532 lbs) 91.00-99.00 (93.73); 550-600 lbs (576 lbs) 86.00-94.50 (89.54); 600-650 lbs (616 lbs) 84.00-91.00 (88.43); 650-700 lbs (676 lbs) 81.50-87.00 (85.12); Yearlings: 600-650 lbs (641 lbs) 87.00-93.00 (89.61); 650-700 lbs (672 lbs) 86.75-93.00 (89.45); 700-750 lbs (720 lbs) 84.00-89.00 (86.86); 750-800 lbs (770 lbs) 83.50-87.50 (85.72); 800-850 lbs (818 lbs) 81.00-84.00 (83.42); 850-900 lbs (862 lbs) 77.00-82.75 (80.32); 900-950 lbs (915 lbs) 75.50-77.50 (77.16).

Holsteins Large 3 600-650 lbs (621 lbs) 64.00-66.50 (65.14).

Feeder Heifers: Medium and Large 1: Calves: 350-400 lbs (397 lbs) 92.50-94.50 (93.39); 400-450 lbs (422 lbs) 85.00-95.00 (89.35); 450-500 lbs (473 lbs) 83.00-88.75 (86.58); 500-550 lbs (529 lbs) 81.75-87.50 (84.82); 550-600 lbs (571 lbs) 82.00-87.75 (84.91); 600-650 lbs (620 lbs) 78.25-85.50 (81.12); Yearlings: 600-650 lbs (626 lbs) 82.75-86.00 (83.22); 650-700 lbs (673 lbs) 81.50-84.25 (83.38); 700-750 lbs (728 lbs) 78.25-81.50 (79.76); 750-800 lbs (766 lbs) 76.25-78.00 (77.65), fleshy 750-800 73.00-77.00.

Slaughter Cows: Head %Lean Weight Average Dress High Dress Low Dress Breaker 58 75-80% 1000-1500 36.00-39.50 38.50-42.00 36.50 Boner 127 80-85% 900-1500 35.50-39.00 38.50-43.50 31.00-35.75 Lean 111 85-90% 850-1300 34.50-36.50 36.50-41.00 28.00-33.00 Light 16 85-90% 725-875 29.00-30.00 25.00-28.00

Slaughter Bulls: Head Weight Average Dress High Dress Low Dress Yield Grade 1-2 28 1300-2100 44.00-47.50 47.00-51.50 39.00-44.50

Estimated dressed cost at Oklahoma National Stockyards: Lean 74.20, light weights 67.85; Boners 74.55; Breakers 72.90. Bulls 83.10.

Replacement Cows: Pretested for bangs, pregnancy, and age Medium and Large 1 Age Weight Months Bred Quality Price 3-6 yr old 925-1250 5-6 months Avg, blacks 560.00-630.00 3-6 yr old 950-1250 5-6 months Avg quality 475.00-520.00.

**Westminster Livestock**

Hagerstown, Maryland

Report Supplied by Auction

Tuesday, October 3, 2000

SLAUGHTER: 99 HEAD, 1.00-2.00 LOWER. UTILITY 37.00-41.00, HIGH DRESSING TO 42.75, CANNERS 32.00-36.00, SHELLY 32.00 DOWN.

BULLS: 14 HEAD. YG#1 47.00-52.75, 1 AT 54.00; YG#2 43.00-47.00.

FED STEERS: 14 HEAD, NO HIGH CHOICE OR PRIME. CHOICE 1250 LBS. TO 67.25, LOW CHOICE 1400-1500 LBS. TO 62.75, HIGH CHOICE TO PRIME HOLSTEINS 57.50-61.75.

FED HEIFERS: SELECT 1100-1300 LBS. 54.50-62.00; 1 CHOICE 930 LBS. AT 58.00.

CALVES: 136 HEAD. GOOD 85-120 LBS. 50.00-67.00, HOSLSTEIN BULLS RETURNING TO FARM. LIGHTWEIGHTS HIGHER. #1 90-125 LBS. 120.00-140.00, FEW TO 149.00, 80-90 LBS. 90.00-122.00; #2 90-120 LBS. 90.00-120.00, 80-90 LBS. 70.00-90.00; HOLSTEIN HEIFERS NO TOPS OFFERED #1 85-120 LBS. 315.00-345.00; #2 180.00-300.00; BEEF X BULLS AND HEIFERS #1 85-125 LBS. 160.00-177.00, #2 100.00-135.00.

BUTCHER HOGS: 28 HEAD, 3.00-4.00 HIGHER. #1 AND 240-265 LBS. TO 43.00; #1 AND 3 215-260 LBS. 38.00-40.00, 270-310 LBS. 35.00-38.00.

SOWS: 11 HEAD. 300-500 LBS. 30.00-32.35, 500-650 LBS. 33.00-36.00.

BOARS: 1686 LBS. AT 15.75.

STOCK CATTLE: 231 HEAD,

ACTIVE BIDDING ON BETTER QUALITY. STEERS MED. AND LARGE FRAME 300-400 LBS. 95.00-102.00, 400-600 LBS. 75.00-86.00, 600-700 LBS. 65.00-77.00, 900-1000 LBS. 60.00-67.50.

HEIFERS: 200-400 LBS. 75.00-95.00, 400-500 LBS. 73.00-87.00, 500-600 LBS. 70.00-80.00, 600-800 LBS. 61.00-75.00.

BULLS: 200-400 LBS. 85.00-108.00, 400-500 LBS. 80.00-97.00, 500-700 LBS. 69.00-82.00, 700-800 LBS. 60.00-66.00.

SHEEP: 23 HEAD. 100-180 LBS. 33.00-49.00, HEAVYWEIGHTS 20.00-35.00.

LAMBS: 89 HEAD. HIGH CHOICE TO PRIME 100-120 LBS. 75.00-86.00, 80-100 LBS. 84.00-93.00, 60-80 LBS. 95.00-112.00; FEW LATE 80.00-87.00.

GOATS: 109 HEAD. LARGE BIL-LIES 75.00-100.00, MEDIUM 60.00-70.00, SMALL FLESHY 40.00-57.00, KIDS 15.00-35.00.

PIGS AND SHOATS: 86 HEAD. BY THE HEAD, 15 HEAD 35-45 LBS. 31.00-38.00, BY THE LB. 17 HEAD 40-50 LBS. 72.00-87.00, 17 HEAD 55-65 LBS. 78.00-86.00; 9 HEAD #2 62 LBS. AT 63.00; 120-160 LBS. 48.00-54.00; 4-H GILTS 190-210 LBS. 44.00-48.00.

NEXT TUES., OCT. 10, SPECIAL FEEDER CATTLE SALE, APPROX. 8 P.M.

**New Wilmington Livestock Auction**

New Wilmington, Pa.

Monday, Oct. 2, 2000

Report Supplied By PDA

CATTLE 133...(PDA). SLAUGHTER STEERS: one High Choice 2-4 1355 lbs 66.00. HEIFERS: couple High Choice 2-4 1220 & 1280 lbs 64.00 & 64.25. SLAUGHTER COWS: Breakers 75-80% lean 38.00-43.50, Boners 80-85% lean 36.00-39.25, Lean 85-90% lean 32.00-

36.00. Shells down to 20.00.

BULLS: few Yield Grade 1-2 1195-1775 lbs 42.00-47.00.

FEEDER CATTLE: STEERS: few Large 2 250-450 lbs 58.00-62.50, Medium 1-2 250-500 lbs 76.00-85.00, couple 94.00, 600-850 lbs 57.50-76.00; HEIFERS: few Medium 1 305-540 lbs 76.00-86.00, few Medium 2 580-770 lbs 58.00-62.00; BULLS: few Medium 2 270-365 lbs 52.00-66.00.

CALVES 130...VEALERS: Standard and Good 70-95 lbs 40.00-50.00, Utility 50-70 lbs 30.00-35.00.

FARM CALVES: No 1 Holstein bulls 90-125 lbs 127.50-162.50, No 2 80-115 lbs 80.00-132.50; few No 1 Holstein heifers 90-120 lbs 305.00-370.00, few No 2 115-165 lbs 80.00-230.00.

Few beef type bulls and heifers 190-230 lbs 80.00-94.00, few 70-110 lbs 125.00-175.00.

HOGS 119...BARROWS AND GILTS: 49-54% lean 230-260 lbs 44.00-44.75, 45-50% lean 220-250 lbs 39.50-42.75, few 40-45% lean 230-290 lbs 39.50-39.75.

SOWS: few US 1-3 325-425 lbs 30.00-39.00, few 500-650 lbs 40.00-41.25.

BOARS: few 215-270 lbs 18.50-29.00, few 310-620 lbs 16.00-19.75.

FEEDER PIGS 36...US 1-3 50-60 lbs 20.00-33.00- per head. US 1-3 125-175 lbs 30.00-42.50- per cwt.

SHEEP 100...SLAUGHTER LAMBS: High Choice and Prime 70-90 lbs 80.00-90.00, Choice 100-145 lbs 65.00-88.00, 45-95 lbs 60.00-75.00.

SLAUGHTER SHEEP: 30.00-55.00 mostly 30.00-44.00.

GOATS 27...(All sold by the head). Few Large Billies 39.00-75.00, few Medium 27.00-50.00, one Large Nanny 48.00, few Medium 24.00-28.00, Large Kids 23.00-53.00, one Small 18.00.

**THINK OF MANURE? THINK MID-ATLANTIC!**

**Used/Rental Liquid Manure Equipment**

**SPREADERS**

(2) Houle 6,300 Gal w/28Lx26, Brakes, Lights, Etc Both Are Rental Units **Call For More Info**  
Houle 3,850 Gal w/23 1x26 Tires, Brakes, Rental Unit **CALL**  
Houle 3,150 Gal w/23 1x26 Tires, Rental Unit **CALL**  
New Idea Model 3222 with Lid, Excellent Shape, 16 5x16.5 Tires **\$10,950 Compare to New Price!**  
3,000 Gal Tank on Badger Running Gear, 21 5x16 1 Tires, Rear Pump, Great Shape! **\$5,500**  
Better Built 3350 Gal **\$4,500**

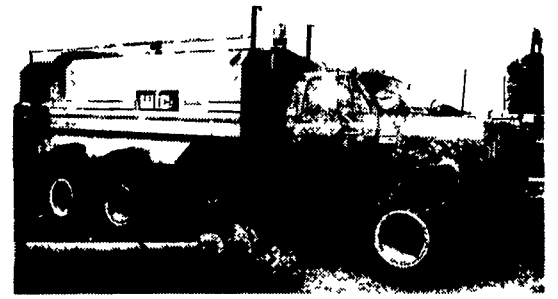
**PUMPS**

(2) Houle Maxi Pumps, 28" **CALL**  
(2) Houle Super Pumps for 8' Pits Both in Good Condition With New Parts **\$3,000 Each**  
Houle Irrigation Pumps, on trailers, hyd. primers **CALL**  
Houle 32' and 42' Agi Pumps **\$7,500 to \$10,000**  
1998 Houle 8/12' Super Pump, Rental Unit **\$6,950**  
1997 Houle 42' Agitator **\$5,500**

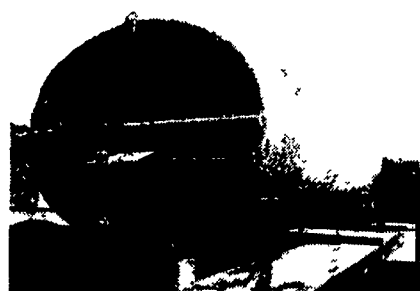
**MISCELLANEOUS**

Rubber Tire Scrapers, 3 pt. & Skid Steer; Also Push Blades  
CADMAN Hard Hose Reels 3250, 3250XL, 3750 **CALL**  
Ever Rain Irrigation Reel, 4"x1300' Engine Drive **\$10,750**  
Long 1560 Irrigation Reel, 3-3/4" x 1200' Hose, Engine Drive, Manure or Water **\$7,175**  
150 HP John Deere Engine w/Houle Manure Irrigation Pump **CALL**  
**Check Our Website For Updated Equipment**  
[www.MidAtlanticAgri.com](http://www.MidAtlanticAgri.com)

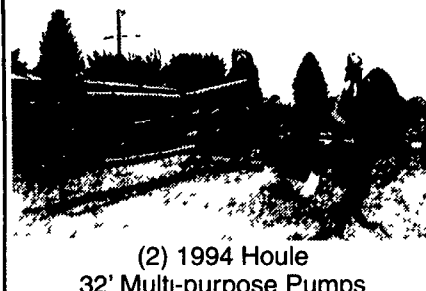
**Wet Weather Special**



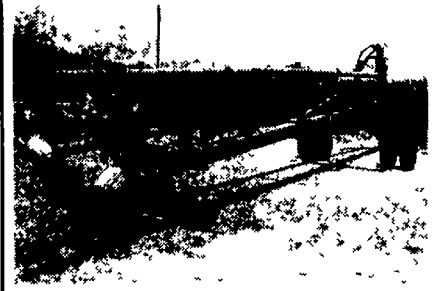
**1979 GMC Tandem**  
w/427 Ci Engine, 13 Speed Trans,  
48x31 Rear Tires, 42x25 Front w/3,600  
Gal. Wic Tank  
**\$12,250**



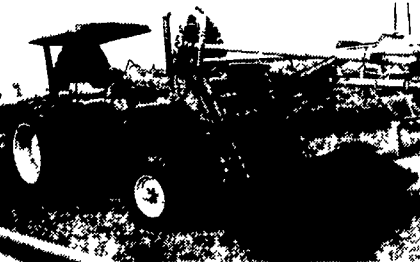
Van Dale 3,000 Gal. Truck Mount Tank, Good Condition **\$1,950**



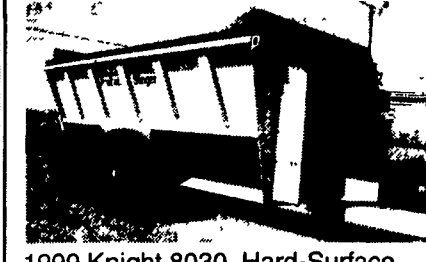
(2) 1994 Houle 32' Multi-purpose Pumps  
(1) As Is **\$1,250**  
(1) Ready to Pump **\$7,250**



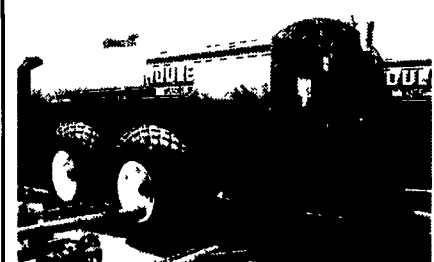
Houle 42' Lagoon Pump, Good Condition **\$6,250**



JD 2555 Tractor w/JD 245 Loader, 4500+ Hrs **\$16,900**



1999 Knight 8030, Hard-Surface Hammers, 21.5x16.1 Tires, Left Over Unit-Needs To Go...One Unit Only At **\$18,800**



2000 Houle 3850 Gal., 23.1x26 Tires, Brakes & Lights, Rental.

**SUB-ZERO**

Heating Outdoor Wood Furnaces featuring...



- Quality
- Design
- Convenience
- Comfort
- 230-800 Gal Water Jackets
- 300,000 - 1.3 Mil Maximum B T U Ratings
- Setting the Quality and Efficiency Standards of the Industry

Thousands of stoves in service across the USA & Canada all bearing the PFS Seal of Distinction and meeting the environmental, safety and quality control codes of both countries

Avoid high heating costs with this stove.

For more information contact

**JAMES SENSENIG**

632 Elysburg Rd., Danville, PA 17821  
570/672-1096



**WOOD/COAL BURNING STOVES**

We have been proudly serving your needs for "22 Years"

Come visit our showroom.

- See our quality:
- Wood Stoves
  - Coal Stoves
  - Insert Models
  - Cook Stoves

Dealer Inquiries Welcome

Made in York County, PA  
**(717) 432-9788**

**Top Volume**



Dealer In North America

4019 Ashville Rd., Quarryville, PA 17566

800-222-2948 • 717-529-2782

MID-ATLANTIC **agri systems**



Alley Scrapers • Barn Cleaners • Piston Pumps • Separators • Lagoon and Pit Pumps • Tank Spreaders • Transfer Pumps • Agitators • Flush Valves • Flush Pumps

Alley Scrapers • Barn Cleaners • Piston Pumps • Separators • Lagoon and Pit Pumps • Tank Spreaders • Transfer Pumps • Agitators • Flush Valves • Flush Pumps