



WENGER'S OF MYERSTOWN

CONSTRUCTION EQUIPMENT & PARTS

800-552-5080 • Nights 717-272-9583

Rt. 501 South Myerstown, PA 17067

HOURS: Mon-Fri • 7:30-5:00 Saturday • 7:30-Noon

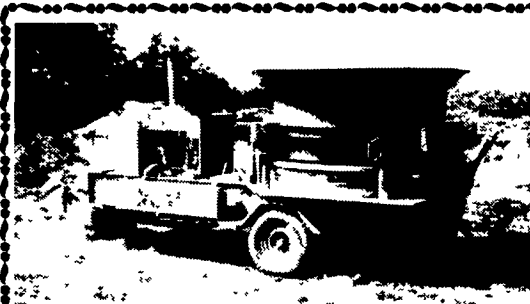
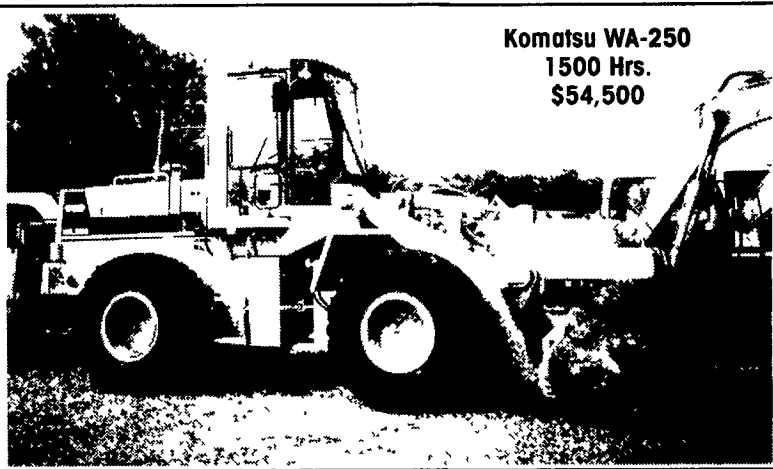
www.wengers.com

kbaum@wengers.com

Case 590 Turbo
\$26,500



Komatsu WA-250
1500 Hrs.
\$54,500



900 Orig. Hours, 4 Cylinder John Deere Motor, Excellent Condition

\$28,000⁰⁰ OBO

(570) 833-2756



1994 KOMATSU WA250-1 Rubber Tired
LOADER, 2 5 Yard Bucket, 4WD, Articulated,
Hours 6900 **\$49,500**

Curry Supply Co., Curryville, PA
1-800-345-2829

#7368	Case 1840 Unloader, 1995, Aux Hyd Dirt Bucket, 1650 Hrs	\$10,900
#7364	Case 95XT Unloader, 1997, Cab w/Heat Hyd Coupler, 82" Bucket, 1550 Hrs	\$27,900
#7362	JD 410 Loader Backhoe, 1978, 2WD, Canopy, Standard, 3100 Hrs	\$12,900
#7366	JD 310 Loader Backhoe, 2WD, Canopy, 14' Hoe, Excellent Cond, 2840 Hrs	\$10,900
#7269	Case 680K Loader Backhoe, 1987, 2WD, Cab, Ext Hoe, 5900 Hrs	\$15,900
#7265	Case 580K Loader Backhoe, 1990, 4WD, Canopy, Ext Hoe, 4900 Hrs	\$22,500
#7270	Case 580SE Loader Backhoe, 1985, 2WD, Cab, Standard	\$14,900
#7078	Case 450 Crawler Dozer, u/c Good, 5,000 Hrs	\$14,500
#7015	Case 570XLT Loader, 1995, 4WD, Cab, 3 pt, 2,500 Hrs	\$25,000
#6814	Vibromax 252 Roller, Dual Drum	\$12,000
#6534	Bobcat 763 Unloader, Aux Hyd, 78" Bkt, 1,800 Hrs	\$13,900
#6678	Case 1840 Unloader, 1994, Aux Hyd Dirt Bkt, 1,718 Hrs	\$11,900
#6796	Case 1840 Unloader, 1996, Aux Hyd Dirt Bkt, 2,660 Hrs	\$12,900
#5182	Case 1845C Unloader, 1989, Aux Hyd, UT Bkt, 2,500 Hrs	\$12,500

Vernon E. Stup Co.

5859 Urbana Pike, Frederick, MD 21701
301-663-3185

PA TRACK & WELDING UNDERCARRIAGE SALE

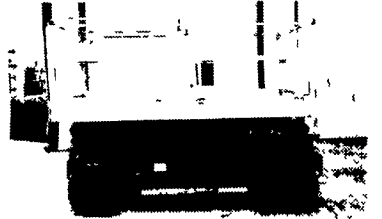
- 1 Set JD-450B/C/D/E Track Groups, New P&B Regrousered Pads, Ready To Install. \$1,450/set
- 1 Set D-3/B/C Track Groups, 60% Rails, Turned Sait P&B, NEW Pads \$1,600/set
- 1 Set D-4/D-4D Track Groups, Turned P & B 18" Pads, \$900/set
- 2 Sets 953/B NEW Track Groups, Pro-Line Sait Rails, 20" Bar Pads, 40 Link, Assembled \$4,750/set
- 1 Set 955K/L/953/B NEW Track Groups Pro-Line Sait Rails 15" 2 Bar "Cat" Hi-Profile Pads, Assembled, \$4,400/set
- 1 Set 977L NEW Cat Tracks, 39 Link Pro-Line Sait Rails, Assembled w/18" 2 Bar Pads \$6,900/set

Call 1-888-387-2510

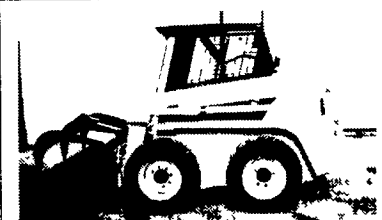
100% Financing w/Good Credit at 9% Int.



Cat E120 Hydraulic Ex. 1989 New Paint, Nice.....\$26,500



1996 Snorkel Scissor Lift, 4x4, 1300 Hrs., 4' Platform Ext.....\$8,500



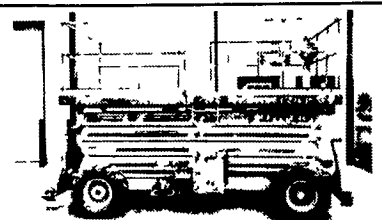
1999 Gehl 4835, 287 Hrs., w/Grapple Bucket or Regular Bucket...\$14,750



98 Cat D4C w/Ripper, 2300 Hrs.....\$48,000



87 Cat 140G, Cab & Scarifier, Real Clean.....\$63,000



JLG 40' Scissor Lift, 4 Cylinder Ford.....\$7,500

95 JD 310D, Tractor Loader Backhoe, Cab, 4x4. . . . \$28,500

CRAWLER LOADER

Komatsu B57S Crawler Loader w/Less than 500 Hrs. on New Cummins Engine... \$17,900

95 JD 455G Crawler Loader, 2200 Hrs., New Paint..... \$32,500

GRADERS

Dynapack Double Drum 66" Roller with Vibrator w/Cat Diesel, New Paint..... \$12,500

WHEEL LOADERS

Cat 920 Wheel Loader, New Rubber & Paint, Pallet Fork, 3rd Valve \$17,500

Case W20B, Good Rubber..... \$15,500

Allis 745, 70% Rubber, 4 5 Yd. Bucket, L~~ift~~ter, 26" Rubber..... \$16,500

LIFT EQUIPMENT

Grove 66 Ft. 4x4 Manlift \$18,000 \$15,000

Grove 45 Ft. 2x4 with 1700 Hrs. \$15,500 \$14,500

Simon 66 4x4 Manlift..... \$17,000 \$15,000

AA Equipment

717/529-2512

No Sunday Calls

1797 Robert Fulton Hwy., Quarryville, PA 17566

• We Buy & Sell • Financing Available

JERRE MARTIN REPAIR

391 N. Farmersville Rd., Ephrata, PA 17522

(Just minutes off RT 222)

(717) 859-3283

Sales Service

Rentals Repairs



'93 Case 580 Super K, 3400 Hrs. \$23,000



'90 Cat 953, New U/C \$47,000



CAT D3 6-Way Blade \$9,500



'81 Cat 943 \$27,500

Financing Available

All Machines Listed For Sale Are Also For Rent

Road Service Available Now
Custom Repairs On All Makes Construction Equipment

WE ARE BUYERS FOR LATE MODEL CONSTRUCTION EQUIPMENT NEEDING REPAIRS

Case 455C crawler loader w/ripper.....	\$16,000	'89 JD 455G crawler loader backhoe, cleaned & painted.....	\$32,500
(2) Case 1845 C's Choice.....	\$9,500	Choice of 2 '84 JD 510B 2x4 Std. Hoe.....	\$13,500
'86 Cat D4H, Excellent.....	\$32,000	JD 544A Wheel Loader.....	\$11,500
'97 Cat 933 crawler loader, 1500 hrs.....	\$32,000	'90 JD 555G, excellent.....	\$32,000
'86 Cat 953 Crawler Loader, cleaned & painted.....	\$37,000	JD 644B wheel loader.....	\$22,000
Cat 955K, 85J Series, Rebuilt Motor U/C 50%.....	\$15,000	JD 644C wheel loader, good cond.....	\$30,000
Cat 955L crawler loader, 13X series, new U/C, completely rebuilt, cleaned & painted.....	\$32,000	'85 Fiat Allis FL5 4 In 1, 1200 Hrs.....	\$16,000
Cat 955L crawler loader, new U/C.....	\$24,000	New Demaco thumblon for excavators, starting at.....	\$1,000
Cat 955H Crawler Loader, Pedal Steer.....	\$9,500	Assortment of demolition hammer, approx. 3000 lbs.....	\$11,000
'90 Cat 963 crawler loader, OROPS, good cond.....	\$56,000	'90 NH 785 skid loader.....	\$10,500
'95 Cat 939, good cond.....	\$38,000	Liebherr 611.....	\$16,000
'94 Cat 963.....	\$65,000	13' quick attach head for MF 300, 410, 510 combine....	\$400
'85 JD 350C.....	\$13,500	Available: Rebuilt exchange motor for Cat 953.....	\$5,000/Exchange
JD 450G crawler w/6 way blade.....	\$29,000		