

Midwest Grain Body 20', 52" Metal Sides, Gallion 20 Ton Scissor Hoist, Excellent Condition, Always Sheded
(302) 654-4789



99 Chevrolet 3500 Cargo Van, White, 350 AT, AC, 11,917 Mi., R Front Susp. and Side Damage, PA Salvage Cert.
\$6,900 570-437-3848

Quic 'n' Easy
 RECEIVER HITCH BY DMI
The Latest In-Tow-Vation!

Cushioned 2" Receiver Hitch

- Fits under your truck bumper, mounting directly to your truck frame
- Brings the receiver to your load - extends 7" and swings 12"
- Exclusive Proximity Hook-up - one person gets it right the first time
- Spring "Cush n" takes the push/pull out of towing, lowering stress on the driver and truck drive train
- Tows whatever your truck is rated to tow - exceeds Class IV certification
- Accepts a variety of adapters drawbar, ball, step-up or step-down, pintle hook and weight distribution system

Never Miss a Hitch Again. DMI

Weaver Distributing
1-800-Weaver-D
 125 Blue Mountain Rd., Fredericksburg, PA 17026

T6' grain body, 12 ton hoist, all good cond, asking \$1150. 717-786-1119

'93 Int. single axle dump, NEW 10' body, 350 hp, \$21,500.; Also '91 Int. single axle dump, NEW 10' body, 350 hp, \$19,500. Curry Supply Co. 1-800-345-2829

1997 Dodge Ram SLT Dsl 5Spd, 3500 Reg Cab, 4WD Blue/Silver \$19,500. 717-475-5761.

84 Ford LN9000 S/A 3406 Cat, VG cond, \$6,000. 79 Ford LN9000 S/A 8V 71 Def. recent O.H., VG cond., \$5,000. 62 4500 gal. S.S. tank trailer, fair cond., \$3,500. All prices neg., 610-285-6451 evenings.

MOTORS
 New & Rebuilt
 350, 366, 427, 454
 6.2 Diesels
Rebuilt & Used
 Will Install
717-762-6415

FORD 1985
FLATBED
DUMP
 New Alum. Sides,
 New Paint,
 23,500 GVW
(717) 354-0316

EBY
USED EQUIPMENT

LIVESTOCK BODIES

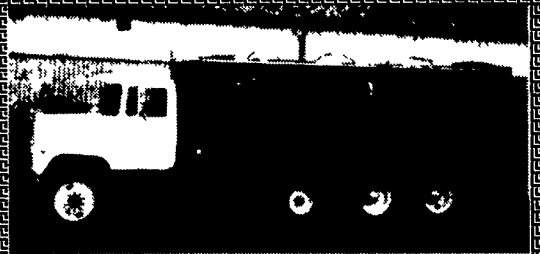
- 12'x96"x6'9" Eby
- 14'x96"x6'3" Eby
- 9'x94"x6'9" Eby w/Deck Rail
- 19'x96" Eby w/Deck Rail
- 10'x96"x6'6" Eby

Above Bodies Would Make Great Poultry Bodies

TRAILERS

- 1995 Barrett 20'x8'x6'6"
- 1989 Featherlite 20'x7'x6'6" Alum. Gooseneck
- 1985 4 Star Alum. 12'x7' x6'9" Bumper Hitch

M.H. EBY, INC.
 1194 Main St. (Route 23)
 Blue Ball, PA 17506
 (717) 354-4971
 (800) 292-4752
 4435 State Route 29
 West Jefferson, OH 43162
 (614) 879-6901
 (800) 752-0507



1983 Mack Truck, Good Condition, 20 Foot Bed **\$14,500.00**
 Please call Eddie or Frank
 @ 301-663-4678 or 1-800-732-1545
EDDIE MERCER AGRI-SERVICES, INC.
 Frederick, Maryland



Ford A-62 Wheel Loader
 1.5 yrd Bucket, Heavy Duty Forks, 2500 hrs. No Rust, Farm Machine Has Never Seen Salt, Excellent Cond. **\$16,500**
Call Scott 908-782-7658

FARM DUMP TRAILERS
 (Direct from the Manufacturer)

6-Ton Dump Trailer

- 10 ft. x 7 ft.
- Floating Tandem Axle
- 3 ft. Front, 3 ft. Tailgate & Grain Chute
- 16 in. Extendable Sides
- 10 ga. Floor & Sides
- 11Lx15 Flotation Tires
- 2-Way 4 in. x 24 in. Hydraulic Cylinder includes hoses

7-Ton Road Dump Trailer

- Fifth wheel or bumper type
- 16 ft. x 8 ft. deck 3 ft. front rack and pockets side & back
- D.C. hydraulic pump & battery mounted in locking tool box.
- 12 ton drop leg jack
- 10 ga. floor
- 6x3x3/16 tube main frame
- Sealed beam lighting
- 7000 lbs. per axle rating
- Electric brakes on both axle
- 16" tires on white spoked rims
- \$6400 U.S. delivered in Northeast U.S.A.

BERKELMAN'S WELDING
 RR 7, AYLMEER, ONTARIO, CANADA N5H 2R6
(519) 765-4230

BRENNER PHONE: 717-232-4271 www.brennerdodge.com Fax: 717-233-8221

RON JACKMAN Business Link Account Manager **RAY MARINO** Business Link Account Manager

The New Commercial Sales Group
 Harrisburg's Only BusinessLink Dealer "Saving the Small Business Owner Time, Money & Hassles!"

2001 DODGE RAM 2500 QUAD CAB SLT 4x4
 Hi-Output Cummins Turbo Diesel, 6 Spd., A/C, Most Options, \$20,999

2001 DODGE RAM 3500 QUAD CAB 4x4
 Dually, SLT, Cummins Turbo Diesel, 6 Spd., A/C, Most Options

2001 DODGE RAM 3500 QUAD CAB DUALY
 Cummins Turbo Diesel, A/C, SLT

NEW RAM PICK-UP TRUCKS
REBATES UP TO \$2,000

PRE-OWNED TRUCKS

- 1995 Chevrolet 1500 Silverado, Black, 105,620 Mi., AT, AC, 4WD
- 1997 Chevrolet Blazer, Red, 61,421 Mi., 4 WD, AT, PW
- 1994 Chevrolet 1500 4x4, Green, 102,095 Mi., AT, 8 Cyl.
- 1995 Dodge Dakota Club Cab 4x4, Green/Gray, 73,900 Mi., AT, 8 Cyl.
- 1994 Dodge 1500 SLT 4x4, Black, 54,564 Mi., AT, 8 Cyl.
- 1998 Dodge 2500 SLT 4x4, Red, 31,405, AT, 8 Cyl.
- 1996 Dodge Ram 1500, Red, 59,188, AT, 8 Cyl.
- 1994 Dodge Dakota SLT C.C., Red, 70,000, AT, 8 Cyl.
- 1995 Dodge Dakota SLT, Green, 108,000, AT, 8 Cyl.

1812-1830 Paxton St., Harrisburg, PA 17104

WHEN AGRICULTURE IS YOUR LIFE,

BODIES

Eby's complete line includes models for every requirement:

- Gooseneck Trailers** - Lengths 14-32', Widths 7', 7'6", 8' and 8'6".
- Bumper Hitch Trailers** - Lengths 12' - 18'
- Grain Bodies** - Lengths to 24', plus landscape and general purpose dumps to 12'
- Flatbed Bodies** - Lengths to 32' in 5 widths
- Landscape Bodies** - Lengths to 12'

GOOSENECKS

BUMPER HITCHES

EBY

Blue Ball, PA
800-292-4752

For quality equipment and customer service that works as hard as you do, nobody offers more than EBY.

THE EQUIPMENT CHOICE IS EBY.