

27 PETS

AKC Collie Stud Service
Nice Markings,
from good stock
717/284-5146

AKC POMERANIAN STUD SERVICE
Cream Colored
717/569-3508

WANTED
Rottweiler Puppies,
Will Pick Up
Call Lillian
1-800-349-9970

WANTED PUPPIES
Pure & Mixed Litter
lots for resale for
companion pets
JACK'S DOG FARM
215-766-8802
or
215-766-8840
leave message
Tues.-Sat. 9 am - 5 pm

PUPS WANTED
Puppies. Call when pups
are 4 weeks old for best
pickup results
All Dogs Must Be
Free of Bugs
I buy pure & mixed breeds
anywhere in Penna.
CASH PAID
No pups over
8 weeks old wanted.
Now Picking Up Pups in
Cumberland, Franklin,
Union, Dauphin and all
of Central PA
Call Jo Jo
609-452-9291
410-778-1429
Call before 8 am for best
results - keep initial
PS \$10 Prize if you
have 5 pups to sell &
put this coupon
in my hand

31 NOTICE

INVITATION FOR BIDS

The Cumberland County Conservation District is requesting bids for an Ag Waste Storage Facility to be funded in part by the Chesapeake Bay Program

Construction of this project is expected to begin during October of 2000. The site is located in West Pennsboro Township, Cumberland County.

The site showing for this project is October 13 at 10:00 a.m. Prospective contractors will receive a bid package which contains instructions to bidders, a sample contract form, the plans and specifications for the project, and a bid sheet. Small and minority businesses and woman's business enterprises are encouraged to respond to this invitation for bids.

Sealed bids will be accepted until the public bid opening at 10:00 a.m. October 27, 2000 at the conservation district office. To obtain a bid package contact Charles Markle at

Cumberland County Conservation District
43 Brookwood Ave. Suite 4
Carlisle Pa 17013
(717) 240-7812
(fax) 240-7813

35 TRUCKS AND TRAILERS

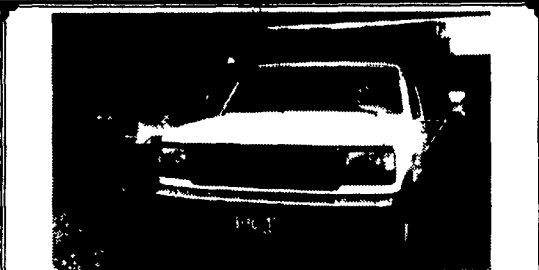
Truck For Sale

1974 Mack Flatbed, 237 Engine, 5 Speed,
Power Steering, Single Axel,
33,000 GVW 20' HD Bed, Good Tires,
Air Ride Seat, AM/FM Cassette,
180,000 Orig Miles, Ready for the Road - \$4,200
Belleville, PA

Call 1-888-387-2510



'95 Hack Centeride Floater: DT 466, 653 Allison, 1800 gal., 65' booms, Durco, Ravens 460, SS foam/rise/educter, Goodyear XT's, 85%, Excellent Condition
717/375-2229 PA

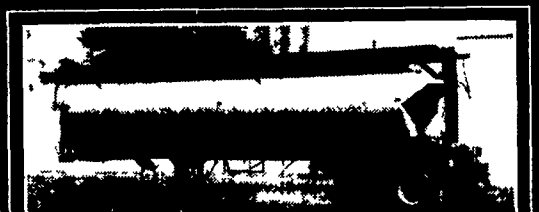


Ford 1994 Super Duty Power Stroke Diesel, 5 speed 10' dump with 9' Western power angle snow plow and Western slide in salt spreader, Reese receiver, Original owner, very nice truck
\$19,500. O.B.O.
410/893-5077

RENT ME



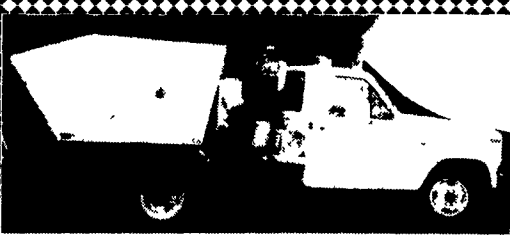
48' Drop Deck Trailer
Air Ride, Heavy Duty Ramps, chains & straps.
\$40/day, no mileage charge
New Holland, PA
717-354-3199



1988 WALINGA 32 FOOT ALUMINUM HOPPER BLOWER TRAILER
with auger, 8 compartments, 11x24.5 tires,
\$26,000 OBO
Phone **717-867-4624**
Mark Hershey Farms, Inc.



1993 GVM HY-VOLUME SPRAYER
7.3 diesel, 5 spd. trans., 9.00x20 tire package,
540 gal. S.S. tank, S.S. plumbing, 50 ft hyd booms,
foam marker, very good condition - low miles
(717) 354-4996



SUPER VAC
1981 FORD 350
80k original miles, runs good
\$2,500
Bucks County
215-794-4006



1987 Volvo, 18' Lightweight Steel Box,
New Hoist, Rebuilt 300 HP Engine,
New Clutch, 8 Speed LL Trans., New Tires
All Around, New A/C, Electric Tarp,
18K Front, 46K Rears, 268K Miles.
\$25,500 OBO
(610) 373-0990

CASH FOR USED DIESEL TRUCKS!

- WE NEED 1/2 TON TO ONE TON:
- FORD DIESELS
 - SUPERCABS
 - CREW CABS
 - DODGE CUMMINS
 - 2WD OR 4X4
 - DUALIES
 - DUMPS
 - UTILITY BODY
 - FLAT BEDS
 - CAB & CHASSIS
 - SUPER DUTIES

LOW MILEAGE ONLY PLEASE
Before you sell or trade your diesel in
somewhere else for LESS.
CALL US!
We Pay More for Used Diesel Trucks Than Anyone.
800-363-2767 TRY US!
or
610-678-3243
Ask for Smokey or Kay
KELLER BROS. RD 7, Box 405
Lebanon, PA 17042

EQUIPMENT FOR SALE

- 1- 1986 T600 Day Cab, 350 Cummins, 9 Speed
- 1- 1994 Freightliner Cabover, 365 Cat, 9 Speed
- 1- 1991 Utility Drop Deck, Taut Liner 48x102, Air Ride
- 2- 1995 Dorsey Reefer Trailer without units 48x102, Air Ride
- 1- 1995 Dorsey Reefer, SBII Thermo King, 48x102, Air Ride
- 3- Trailmobile 48x102, Air Ride
- 1- 1986 Mack MS 250, Straight Truck
- 1- 1990 Kenworth Truck Tractor, 400 Detroit, 9 Spd.
- 1- 1995 Kenworth Truck Tractor, 425 Detroit, 9 Spd.

Curran Inc.
2719 Della Road, Brogue, PA 17309
717-927-9244

ALUM-LINE, INC.
The Leader in Heavy Duty Construction
"More Trailer - Less Money"

All-Aluminum Livestock Trailers, Bumpers & Goosenecks • 8' to 39' Lengths • Double Deck Package Available

"The Finest Truck Bed You'll Own"

All-Aluminum Stake Body Beds • 6' To 24' Lengths • Many Standard & Optional Features • All Types of Tool Boxes

Also from Alum-Line, a complete line of aluminum pickup boxes and truck tool boxes
Wolfe Auction
9801 Hansonville Rd.
Frederick, MD 21702
800-443-9580

FOR SALE

1991 CH613 Mack, E7 300 Eng., 9-Speed Fuller, Air Ride & Susp. 24.5 Disc Wheels. 65% Rubber. Excellent Condition.
\$12,500.00 Firm. • 570-465-3589

1989 Iveco 23-16 Cab & Chassis, 23,000 GVW, 6 Cylinder Turbo Diesel, Exhaust Brake, Fresh in Frame Overhaul, 189,000 Miles, Will Fit 20' Body
\$5,700 OBO
Call **717-786-0300** evenings

1975 Chevy C-60
replaced 350 eng, 12' bed w/side doors, just inspected, new starter, alternator, battery & master cyl., runs great.
Asking \$1,000 OBO

1985 Ford Truck Econoline
350, 13' bed w/side doors, just inspected, new tires & battery, runs great.
Asking \$2,000 OBO.

Call **Scott**
717-336-2277

P.T.S. Pierce's Trailer Sales
SCHAEFFERSTOWN PA
(717) 949-3246

By mail 709 W Main, Newmanstown, PA 17073 8953

Pierce's Trailer Sales
Authorized Dealer for
MONARCH, MORITZ, PA INTL.
thoroughbred horse trailers stock trailers utility, dump, flat-bed, and equipment trailers

BIRCHWOOD AUTO SALES
717/949-6513

1998 FORD F150 XLT, 2WD, 4.2 V6, AT AC PW, PL, PM, Tilt, Cruise, Cass, Alloys, Sharp Truck! Black, 39,900 Miles **\$14,500**

1997 DODGE RAM 1500 SPORT, 4x4 Ex Cab 318 V8, AT, AC, PW, PL, PM, Tilt, CD, Cruise Alloys, Red, 59,000 Miles **\$17,500**

1995 FORD RANGER XL, Ex Cab 2WD 3.0 V6, AC, Mag Wheels, Alarm, Tarp, Red 74,000 Miles, Sharp Truck! **\$8,900**

1994 DODGE RAM 2500, 4x4, 360 V8 AT AC, Tilt, Cruise, Cass, White, 63,000 Miles **\$9,900**

1993 FORD F-150 XLT, X Cab, 2WD, 302 V8, AT, AC, PW, PL, PM, Tilt, Cruise, Cass, Red/Grey, One Owner, 25,000 Miles **\$13,900**

1992 CHEVROLET S-10, 2WD, 2.8 V6, 5 Spd, AC, Cass, Red/White, 88,000 Miles **\$4,500**

1988 CHEVROLET SCOTTSDALE 2500, 6.2 Diesel, Ex Cab, 4x4, 5 Spd, AC, PW, PL, Tilt, Cass, Cruise, Red/White, 107,000 Miles **\$8,500**

1987 FORD F-150 XL, 2WD, 300 6 Cyl, Cass, Delays, 77,000 Miles, Red **\$2,900**

WE ALSO BUY CLEAN USED TRUCKS, OLD OR NEW, GAS OR DIESEL

(717) 949-6513

Birchwood
Auto & Truck Sales
Schaefferstown, PA