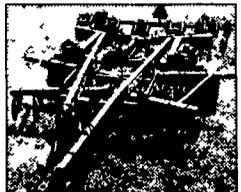
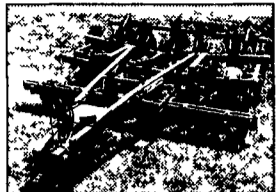


Get Equipped for Fall



B 19636 DMI 530 Subsoiler w/ Disc Gangs on Front, Lead Shanks, Disc Levelers on Rear. Field Ready. SALE PRICE \$17,500



B 22866 DMI 730 7 Shank Eco-Low-Tiger Chisel Plow w/ Lead Shanks, Disc Attachment, Rear Leveler, Excellent Condition, WAS \$13,900, IS \$12,900



A 22955 DMI Tiger II 5 Shank Subsoiler, Auto-Reset, 12' Working Width. SALE PRICE \$8,500



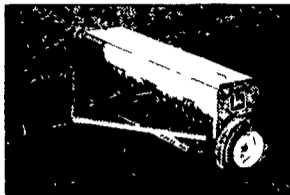
B 19435 Krause 4918 27' Disc, Standard Gang, Center & Wing Duals, Packer Hitch & Hoses, New Blades, SALE PRICE \$9,900



B 22431 Krause 6331 31' Landstar, Field Finisher w/ Star Wheels, For High Residue Management, SALE PRICE \$24,500



B 19354 MF 820 23' Rockflex Disc, 9 1/2" Spacing, 2 1/2" Blades, Duals on Center, Singles on Wings, SALE PRICE \$5,900



C 22782 JD 8300 21 x 7 Conventional Drill, Double Disc Operators, 2 Row Track Eliminator, Cylinder & Hoses, WAS \$3,000, IS \$2,500



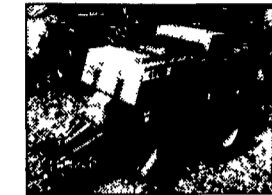
B 19196 JD 455 30' Conventional 3 Section Folding Drill, 6" Spacing, 4 x 12 Press Wheels, WAS \$15,500, IS \$14,500



A 22883 JD 8350 12' Conventional Drill, 24 x 6. Double Disc Openers, Excellent Condition, SALE PRICE \$3,500



B 18906 1991 CIH 8580 Baler, Makes 4x4x8, 60,635 Bales. SALE PRICE \$29,000



A 23165 1988 Hesston 4900 Baler, 4' x 4' Bales, Apx 30,000 Bales, Rebuilt, SALE PRICE \$32,500



A 19959 1993 NH 650 Round Baler, 4' x 6', Hydraulic Tie, SALE PRICE \$9,950

USED HAY & FORAGE

- B 40139 CIH 8545 Baler
- B 18906 CIH 8580 Baler
- A 40030 CIH 8585 Baler
- A 23165 Hstn 4900 Baler
- B 40324 Hstn 4900 Baler
- C 31177 IH 435 Baler w/Thrower
- A 23191 JD 530 Round Baler
- A 19959 NH 650 Round Baler
- B 17722 CIH 1490 12' Mower Cond
- C 31455 CIH 8830 Mower Cond
- B 40078 CIH DC515 Mower Cond
- C 22296 JD 1470 12' Mower Cond
- A 22880 NH 1431 12' Mower Cond
- A 23226 NH 499 Mower Cond

USED TILLAGE

- A 23101 IH 183 4RN Cultivator
- B 18068 MF 18 Cultivator
- B 18067 UM Cultivator
- B 19931 KR 3115A Landsman
- B 22431 KR 6331 Landstar
- B 40325 SF 4324 24' Landsman
- B 18870 CIH 720 OL Plow

USED PLANTERS & DRILLS

- B 17476 IH 145 4x18 Plow
- B 17477 IH 145 4x18 Plow
- B 17038 IH 710 Plow
- B 19994 BR 15 Cultmulcher
- C 31456 BR 12 Cultipacker
- B 19932 BR 16 Packer
- B 23133 BR 27 Packer
- B 19359 DMI 25 Crumbler
- B 17325 UM 29 Basket
- B 17326 UM 29 Basket
- B 18505 BR 5 Shnk Subsoiler
- A 18868 DMI 500 3 Arm Subsoiler
- B 19636 DMI 530B Subsoiler
- A 23032 DMI 7 Shnk Subsoiler
- B 22866 DMI 7 Shnk 730 Eco-Low-Tiger
- B 19409 DMI ET500 Subsoiler
- A 22955 DMI 5 Shnk Tiger II Subsoiler
- C 19710 BR CPP 10 Chisel Plow
- B 40252 IH 11 Slicer Chisel Plow
- C 19130 FR 10 12 Chisel Plow
- A 23196 KR 2860 Chisel Plow

JUST TRADED

How to the Middleboro Store	How to the Middleboro Store
40492 KR 4807-23 Plow	23213 IH 706 Tractor
40495 JD 7723 4WD Combine	23213 IH Super M Tractor
40513 IH 1440 Combine	23223 NH 499 Mower Conditioner
40420 GP 30' Conventional Drill	23228 IH 1420 Combine
40422 CH 7140 MFD Tractor	23230 SF 4000 Disc
40428 CIH 720 6 x 18 Plow	23232 NH 40 Blower
40436 CIH 5100 Twin Drill	23232 DL 12' Plow
40441 CH 5280 MFD Tractor	23232 IH 2188 Combine
40416 LH 12' Chisel Plow Full-Type	23237 IH 100 Heavy Tractor
40417 LH 12' Chisel Plow Spt	23236 CH 4230 MFD Tractor
40418 JD 1180 Tractor	23236 NH 700 Plow
40430 JD LF Drop Spreader	How to the Middleboro Store
40446 GP 20' NT Drill	31559 CH 1020-28 Platform
40455 NH 488 Mower Conditioner	31580 JD 8250 1400' Single Disk Drill
40457 IH 674 Tractor w/Loader	31581 FM Cub w/80' Undermount Mower
40462 IH 1086 Tractor	31554 FM Cub w/48' Mott Flail Mower
40463 IH 1586 Tractor	31557 CH 2166 Combine
40472 FR 18' Ditcher	31558 CH 1020-20 Platform

How to the Intercourse Store

23468 Kinze 2500 8R Planter
23472 GP 10' EW NT Drill

USED DISCS

- B 40303 CIH 496
- B 18976 IH 496 34'
- A 23238 IH 475

Waiver

Build

Buying a used... special Waiver... time program

Waiver

- Waiver
- Warrant
- thru Dec
- Guarant
- Hoover v
- upgrade

C 21934 1982 IH

A 16020 1984 IH

B 18597 1984 IH

A 17263 1985 IH

B 17866 1982 IH

A 22233 1978 IH

C 30220 1982 IH

A 15098 1984 IH

B 18509 1983 IH

A 20240 1984 IH

B 15933 1989 CIH

B 17353 1990 CIH

Waiver of on Used C Until 9/1

Financing Available Combines For 1. Interest Waiver with Balance at S for Up to 60 Mon

2. Fixed Low Rate 4.9% for 36 M Fixed Low Rate 5.9% for 48 M

Fixed Low Rate 6.9% for 60 M FINANCING OPTION CHANGE WITH



A 23031 Steiger ST280, 4276 Hours, Tires Front - 23 1x34, Rear - 23 1 x 34, Dual Wheels, 280 HP



B 19217 1997 CIH 7240 MFD Cab, 2209 Hours, 20 8 x 42 Duals, 195 HP



A 22559 1983 JD 4650 MFD Cab, 5800 Hours, Tires Front - 18 4x26, Rear-20 8x38, 540/1000 Pto, 165 HP



A 22784 1999 CIH MX 200 MFD Cab, 513 Hrs, 18 4x42 Duals, 165 HP



B 19587 1992 JD 4560 2WD Cab, 1806 Hrs, 18 4x46 Duals, 156 HP



B 17774 1997 CIH 8920 MFD Cab, 2073 Hrs, 18 4x42 Duals, 155 HP



A 23004 1988 CIH 7120 2WD Cab, 4935 Hours, Tires Front - 14Lx16 1 - New, Rear - 20 8x38, 3 Pt., 151 HP



A 17811 1979 IH 1086 2WD Cab, 4534 Hrs, Tires Front - 11 00x16, Rear-20 8x38, 540/1000 Pto, 131 HP



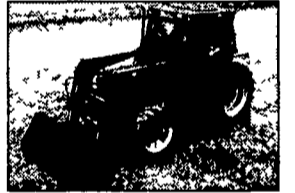
C 19501 1989 CIH 7110 2WD Cab, 2531 Hrs, 18 4x38 Duals, 131 HP



B 19890 1996 CIH 5230 MFD Cab, 1775 Hours, 18 4 x 34 Duals, 90 HP



C 19554 1977 IH 886 2WD ROPS, 4205 Hours, Tires Rear - 18 4x34, Diesel, 540 Pto, Rebuilt Engine, 90 HP



C 31472 1988 CIH 885x1 MFD Cab w/ 2255 Loader, 2809 Hours, Top Link, SMV, Manuals in Cab

150 + HORSEPOWER

NO.	YR	MAKE	DESCRIPTION	HP
A 23031	ST	280 4WD, 4276 Hours, 23 1 x 34 Duals,	280 HP	
B 19203	1978	Vers 875 Cab, 3901 Hours, 20 8 Rear Tires,	247 HP	
B 19590	1996	JD 8400 MFD Cab, 2386 Hours, 18 4 x 46 Duals,	225 HP	
B 18836	1995	CIH 7250 MFD Cab, 1745 Hours, 20 8 x 42 Duals,	215 HP	
B 19947	1999	CIH MX 240 MFD Cab, 459 Hours,	205 HP	
B 19217	1997	CIH 7240 MFD Cab, 2209 Hours, 20 8 x 42 Duals,	195 HP	
C 23046	1979	Case 2590 2WD Cab, 6636 Hours, 20 8 x 38 Duals,	180 HP	
C 31092	1980	IH 3788 MFD Cab, 6627 Hours, 20 8 x 38 Rear Tires,	170 HP	
A 22559	1983	JD 4650 MFD Cab, 5800 Hours, 20 8 x 38 Duals,	165 HP	
A 22784	1999	CIH MX 200 MFD Cab, 513 Hours, 18 4 x 42 Duals,	165 HP	
C 19589	1992	JD 4560 2WD Cab, 2280 Hours, 18 4 x 46 Rear Tires,	156 HP	
B 19587	1992	JD 4560 2WD Cab, 1806 Hours, 18 4 x 46 Duals,	156 HP	
B 17774	1997	CIH 8920 MFD Cab, 2073 Hours, 18 4 x 42 Duals,	155 HP	
B 40119	1994	CIH 7220 MFD Cab, 2550 Hours, 18 4 x 42 Rear Tires,	155 HP	
A 23004	1988	CIH 7120 2WD Cab, 4935 Hours, 20 8 x 38 Rear Tires,	151 HP	
B 19583	1991	CIH 7120 2WD Cab, 2115 Hours, 18 4 x 46 Rear Tires,	151 HP	
B 19582	1991	CIH 7120 2WD Cab, 3093 Hours, 18 4 x 46 Rear Tires,	151 HP	

100-150 HORSEPOWER

NO.	YR	MAKE	DESCRIPTION	HP
B 40463	IH	1586 Tractor,	145 HP	
B 40092	IH	1486 2WD,	145 HP	
C 19501	1989	CIH 7110 2WD Cab, 2531 Hours, 18 4 x 38 Duals,	131 HP	
A 17811	1979	IH 1086 2WD Cab, 4534 Hours, 20 8 x 38 Rear Tires,	131 HP	
C 22860	1976	IH 1086 2WD Cab, 4962 Hours, 20 8 x 38 Rear Tires,	131 HP	
A 23190	1980	IH 1086 2WD, 5072 Hours, 18 4 x 38 Rear Tires,	131 HP	
B 40462	IH	1086 Tractor	131 HP	
B 22937	1999	CIH MX 150 MFD Cab, 491 Hours,	130 HP	
A 23186	1993	CIH 5250 MFD Cab, 3201 Hours, 18 4 x 38 Rear Tires,	112 HP	
B 40441	1997	CIH 5250 MFD Tractor, 1300 Hours,	112 HP	

Less Than 100 HORSEPOWER

NO.	YR	MAKE	DESCRIPTION	HP
A 23187	1991	CIH 5140 2WD Cab w/Ldr, 4013 Hours, 18 4 x 38 Tires,	94 HP	
B 19890	1996	CIH 5230 MFD Cab, 1775 Hours, 18 4 x 34 Duals,	90 HP	
A 23288	1995	CIH 4230 MFD Tractor, With 2255 Loader, 397 Hours,	90 HP	
C 19554	1977	IH 886 2WD Cab, 4205 Hours, 18 4 x 34 Rear Tires,	90 HP	
A 23312	IH	706 Tractor		
A 19381	1969	IH 656H W/Ldr, Diesel, 15 5 x 38 Rear Tires,	66 HP	
C 31519	1966	IH 656D, 15.5 x 38 Rear Tires,	66 HP	
B 19599	1960	IH 460D, 18.4 x 38 Rear Tires,	52 HP	
C 19755	1976	IH 464, Gear, 7800 Hours, 14 9 x 28 Rear Tires,	46 HP	
B 40048	1999	CIH C50 MFD ROPS w/Ldr, 222 Hours, 14 9x28 Tires,	40 HP	
B 19898	Case	800, Gear, Gas, 15 5 x 38 Rear Tires		

Financing Available On All Used Tractors From Hooper

Special Programs Available for Under 100 HP Tractors:
 1) 6 Month Interest Waiver
 2) Fixed Low Rate Financing - as Low as 4.9% for 36 Months
 3) Split Rate Financing - 5.25% for the First 12 Months
 4) Lease Options

Special Programs Available for 100+ HP Tractors:
 1) 6 Month Interest Waiver
 2) Fixed Low Rate Financing - as Low as 4.9% for 36 Months
 3) Split Rate Financing - 5.25% for the First 12 Months
 4) Lease Options

Call a Hooper Salesman Today For Details
 Financing Options Subject to Change Without Notice

A INTERCOURSE, PA
800 732-0017
 MIDDLETOWN, DE
B **800 341-4028**
 McALISTERVILLE, PA
C **800 433-6679**

HOOBER

HOOBER, Inc
 THREE LOCATIONS

Farm Machinery Runs Better With Hooper's ADVANCED MACHINERY SERVICE

For a complete list of Hooper inventory, visit our web site.