

Special Monthly Greencastle Livestock Sale

Greencastle, Pa.
 Report Supplied by Auction
 Friday, Sept. 15, 2000
 264 HEAD.
 STEERS: 200-300 LBS. 82.00-108.00,
 300-500 LBS. 80.00-101.00, 500-700
 LBS. 76.00-93.00, 700-900 LBS. 70.00-
 84.00, 900-1000 LBS. 62.00-69.00.
 HOLSTEIN STEERS: 200-400 LBS.
 70.00-80.00, 400-500 LBS. 65.00-78.00,
 500-700 LBS. 63.00-74.50, 700-900 LBS.
 60.00-68.00.
 HEIFERS: 200-300 LBS. 80.00-
 100.00, 300-500 LBS. 80.00-96.00, 500-
 700 LBS. 75.00-89.00, 700-900 LBS.
 70.00-79.00, 900-1000 LBS. 60.00-66.00.
 BULLS: 200-300 LBS. 84.00-99.00,

300-500 LBS. 80.00-97.50, 500-700 LBS.
 70.00-85.00, 700-900 LBS. 60.00-67.50,
 900-1000 LBS. 54.00-60.00.
 HOLSTEIN BULLS: 450-650 LBS.
 58.00-67.50.
 NEXT SALE FRI., OCT. 6, 7:15 P.M.
 2 SALES IN OCT., 2 SALES IN NOV.

Pa. Grain

September 18, 2000

Report Supplied By PDA

COMPARED TO LAST MONDAY'S
 MARKET FOR EASTERN AND CENTRAL
 PENNSYLVANIA: CORN
 STEADY TO .10 LOWER WITH NEW
 CROP EXPECTED BY MID-WEEK,
 WHEAT VERY UNEVEN, .06
 HIGHER TO .10 LOWER, BARLEY
 AND OATS STEADY, SOYBEANS .10
 TO .20 LOWER, EAR CORN STEADY

TO 5.00 LOWER. PRICES PAID DE-
 LIVERED TO DEALERS DOCK, ALL
 PRICES PER BUSHEL, EXCEPT EAR
 CORN PER TON.
 SOUTHEASTERN PENNSYLVANIA
 CORN NO. 2-Y RANGE 1.78-2.05,
 FEW REPORTED 2.12, AVERAGE
 1.97, CONTRACT FOR HARVEST
 1.72-1.88; WHEAT NO. 2 RANGE 1.99-
 2.32, AVERAGE 2.10, CONTRACT
 FOR HARVEST 2.59-2.74, BARLEY
 NO. 3 RANGE 1.30-1.45, AVERAGE
 1.39, OATS NO. 2 RANGE 1.40-1.50,
 AVERAGE 1.42; SOYBEANS RANGE
 4.37-4.64; AVERAGE 4.49, CON-
 TRACT FOR HARVEST 4.49-4.63;
 FEW REPORTED GR. SORGHUM
 RANGE 1.73, AVERAGE 1.73; EAR
 CORN RANGE 50.00-65.00, AVER-

AGE 55.60; AVERAGE MOISTURE
 NEW EAR CORN RANGE 45.00-50.00,
 AVERAGE 48.70.

AVERAGE 48.70.

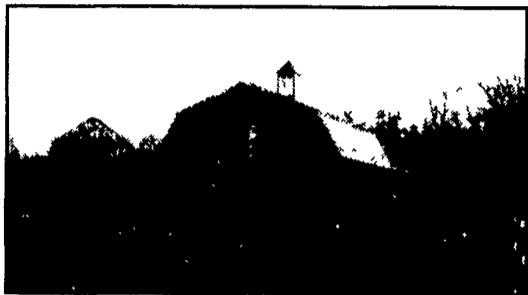
WESTERN PENNSYLVANIA
 CORN NO. 2 RANGE 2.00-2.10, AV-
 ERAGE 2.02; WHEAT NO. 2 RANGE
 2.05-2.08, AVERAGE 2.07; BARLEY
 NO. 3 RANGE 1.35, AVERAGE 1.35;
 OATS NO. 2 RANGE 1.10-1.40, AVER-
 AGE 1.26; SOYBEANS NO. 1 RANGE
 4.28, AVERAGE 4.28; CORN RANGE
 75.00, AVERAGE 75.00.

CENTRAL PENNSYLVANIA
 CORN NO. 2-Y RANGE 1.85-2.12,
 AVERAGE 2.03; WHEAT NO. 2
 RANGE 1.90-2.00, AVERAGE 1.93;
 BARLEY NO. 3 RANGE 1.35-1.40, AV-
 ERAGE 1.38; OATS NO. 2 RANGE
 1.20-1.35, AVERAGE 1.29; SOYBEANS
 RANGE 4.23-4.50, AVERAGE 4.34;
 EAR CORN RANGE 58.00-70.00, AV-
 ERAGE 65.75.

LEHIGH VALLEY AREA
 CORN NO. 2-Y RANGE 1.95-2.16,
 AVERAGE 2.00; WHEAT NO. 2
 RANGE 2.00-2.25, AVERAGE 2.13;

(Turn to Page A30)

**"Let Us Assist
 You In The
 Design Of
 Your Next
 Building
 Project."**



Timber Tech Engineering, Inc.

CONSULTANT ENGINEERS

254 W. Franklin Street
 Womelsdorf, PA 19567

(610) 589-4589

(610) 589-5384 FAX



BUILDING & FACILITIES PLANNING

**Not a Seed
 of Doubt.**



Through exhaustive testing and development on over 200 working farms in the Northeast and Mid-Atlantic, Agway's agronomic experts have removed the doubt from choosing seed corn hybrids. All Agway hybrids have been tested for success on farms just like yours, capitalizing on the latest genetic advancements and production practices.

For example: AG5496 features natural corn borer tolerance, fast dry-down, vigorous early growth and superior late season plant intactness. AG6399Bt contains the YieldGard® gene for locations where potential for European corn borer damage is high. It's an excellent choice for early planting, conservation tillage and easy harvesting.

So plant success, not doubt. Give us a call today for more information on how we can provide practical, proven seed solutions that help turn your toughest growing challenges into profitable results.

AGWAY

Practical Solutions.
 Profitable Results.

WWW.AGWAYFARMSEED.COM

YieldGard is a registered trademark of, and used under license from, Monsanto Company

EMHERR
Complete Grain Bin Equipment Store

GSI provides personal service to every customer. That keeps us one step ahead of the rest.

- Weight-Tronix Feed Mill
- Transport Augers
- Bucket Elevators
- Stirring Systems
- Utility Augers
- Feed Bins
- Wet Tanks
- Grain Bins
- Air Drying Systems
- Grain Dryers
- Parts & Motors

GSI AIRSTREAM

 AUTOMATIC BATCH OR CONTINUOUS FLOW GRAIN DRYERS	 EASY ACCESS WALK-IN DOOR
 GSI AGRIFLOOR SYSTEMS	 CENTRIFUGAL FANS
 GRILLED VENT	 AIRSTREAM GRAIN SPREADERS
 AIRSTREAM VANE-AXIAL FANS	 WITH VANE-AXIAL HEATERS

GRAIN SAVER Heavy Duty Grain Auger COMMERCIAL HEAVY DUTY SEALED BEARING FULLY ADJUSTABLE MOTORMOUNT

HEAVY DUTY 3/4" THREADED HEIGHT ADJUSTMENT

HEAVY DUTY SPIDER CAGE GUARD 10 GA. HEAVY DUTY FLIGHTING 14 GA. GALVANIZED TUBING 13 SIZE B 1 OR 2 GROOVE PULLEY

4"x11" starting at \$139⁹⁹

DURABLE ONE PIECE MOTOR MOUNT DURABLE ABS SPOUT POWDER COAT LONG LASTING

MODEL 40 GRAIN CLEANER
 Also available up to 3,000 bu/hr. capacity
 In Stock Now.
 Call For Pricing **Sukup**

FASTIR™ STIRRING MACHINE

★Full Line Parts Dept.★
 ★Sell, Service & Install★

Approx. 5 mi. South of Lancaster on Rt. 272
 14 Herrville Road
 Willow Street, PA 17584
 Ph. 717-464-3321 or Toll Free 800-732-0053
 Mon.-Fri. 6:30 am to 8 pm
 Sat. 7:30 am to 6 pm
 Sun. Closed

EMHERR
 EQUIPMENT, INC.
 FARM & HOME CENTER

VISA
 MasterCard
 Discover
 American Express

ACE Hardware
 UPS Shipping Point
 Not responsible for typographical errors
 9/23