

**TRUCKS AND TRAILERS**



**TEN 1994 FREIGHTLINER FLD12064**, 48" SC, 400 HP Cummins or Detroit, GREAT STARTER TRUCK,

\$869.79/Month  
OAC  
CALL FOR DETAILS



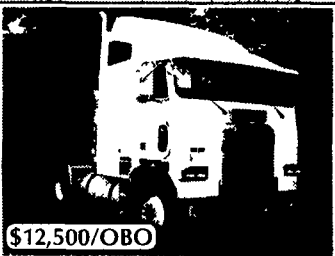
**1989 FORD Model 700** Cargo Van, White In Color, 228 Wheel Base, Ford 16TD Engine w/170 HP, Ford 5 Spd. Transmission, 4 10 Gear Ratio, PS, Spring Suspension, Dual 40 Gal Steel Tanks, All Steel Wheels w/22 5 Tires

Stock #M03340



**USED 1997 FREIGHTLINER FL70**, Green Conv., Single Drive Axle, 168 WB, 4.88 Gear Ratio, Caterpillar CFE 275HP Engine, Allison 6 Speed Auto Trans., All Alum. Wheels, 2 Steel 75 Gal Fuel Tanks, Reese Ball Hitch In Fixed Position, Air Ride Susp., PS

Stock #748317



**USED 1993 FREIGHTLINER FLA104064T** cabover w/double bunk sleeper, Detroit series 60 350HP eng, Fuller 9 spd trans, PS, 219 wheel base, 3 36 gear ratio, color white, dual 150 alum tanks, 22 5LP tires on all steel wheels, ASF fixed fifth wheel, air ride suspension

Stock #420885



**2000 NEW UNIT FREIGHTLINER, FL1125D**, white, conventional dump truck, 200 wheel base, Caterpillar C12 engine, 430 HP, with engine brake, Rockwell 10 speed transmission, all aluminum wheels, 4 89 Gear ratio, dual 70 gal. aluminum fuel tanks. Stock #F04930



**2000 NEW UNIT FREIGHTLINER FL80**, white, conventional straight truck, 204 wheel base, Caterpillar CFE 250 HT engine, 250 HP, no engine brake, Fuller 6 spd. transmission, all steel wheels, 5.29 gear ratio, 1-100 gal. fuel tank. Several in stock! 26,000 to 33,000 GVW

Stock #F40499

Since 1967



**DUTCHMANS FREIGHTLINER**

PA Turnpike Exit 21, Denver, PA 17517

Phone (717) 336-2867 or (800) 769-9887



**97 CHEVY C2500 CHEYENNE** 4x2, 350 Vortec, AT, A/C, AM-FM Cas, Cruise, Tilt 8600 GVW, 3 73 Rear, 42,000 Mi., White

\$13,900



**98 CHEVY K2500 SILVERADO EXTENDED CAB** 4x4 350 Vortec, AT, A/C, PW, PDL, Cass & CD, Tilt, Cruise, 8600 GVW, 3 73 Ltd Slip Rear, 23,000 Mi., Dark Green

\$22,900

**MARTIN'S AUTO SALES**

1025 W. Main St. New Holland, PA 17557

(717) 656-6621

**LEFEVER BROS. CHEVROLET GEO.**

YOUR DIRECT LINE TO GENUINE GM PARTS

(800) 533-3837

When you call the number listed above, you'll reach our wholesale parts specialists, who can help you keep your GM repair work moving quickly.

Ask about:

- Specializing in GM Medium Duty Trucks, Current and Obsolete.
- \$500,000 Parts Inventory.
- Parts Locator for Those Hard to Find Items.
- We Ship Anywhere, Local Delivery Available.
- Experienced, Knowledgeable Personnel.

Mon, Tues, Thurs, Fri  
7 30 a m - 4 30 p m  
Weds 7 30 a m - 8 30 p m  
Major Credit Cards Accepted

(717) 432-9697

Quality Dealer Since 1921

406 U.S. Rt. 15, Dillsburg, PA 17019



Nothing's better than an original.



Trailer Financing Available or

Truck & Trailer Parts & Accessories Distributor

**HOURS**  
Mon, Tues, Wed, & Fri 8-5,  
Thurs 8-8, Sat 8-2

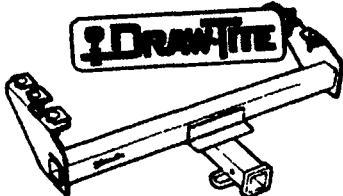
7760 Allentown Blvd.  
Harrisburg 717-671-9115

6250 Carlisle Pike  
Mechanicsburg 717-795-9116

Trailer Repairs & Fabrication 717-795-9902  
Orders 800-622-7003



**WORTHINGTON TRAILERS**  
Snowmobile Trailer w/Lift Top All Aluminum w/Front Acc. Door



ALL CLASS OF HITCHES

A.R.E. TRUCK CAP & LIDS • TRUCK ACCESSORIES



SNOW PLOWS by Meyer

- ◆ Trip Edge Design
- ◆ More Pronounced Blade Curve
- ◆ Lift Unit - Electric Hydraulic
- ◆ Pull-Away™ Mounting & Easy Hitch Attaching System
- ◆ Diamond Snow Plows Meet Your Demand
- ◆ All Sizes To Fit The Following Vehicles:  
Sub Compact SUVs & Pickups  
Mid Size SUVs & Pickups  
Full Size SUVs, Pickups, Commercial

Authorized Sales & Service

DIAMOND HAS SPREADERS...



...AT THE RIGHT PRICE

STANDARD FEATURES

- ◆ Self Contained
- ◆ 2 Yard Capacity
- ◆ 8' Length for Heavy Duty Pickups
- ◆ Variety of Options
- ◆ In Cab Electric Speed Control
- ◆ 10.5 HP Commercial Grade Briggs & Stratton Gas Engine
- ◆ All Sizes

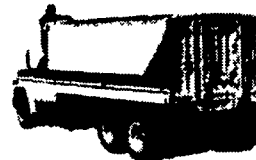
DRAW-TITE HITCH & TOWING PRODUCTS

BEDLINERS • SNOW PLOWS

TRAILER PARTS & ACCESSORIES • TRAILER INSPECTION & SERVICE

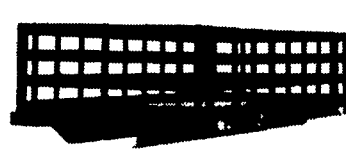
**Obeco IT'S THE BEST PLATFORM MONEY CAN BUY... AND IT'S PART OF EVERY OBECO TRUCK BODY BUILT**

**OBECO STAKELESS**



Maximum grain capacity Rugged construction 14-gauge, 60" seamless steel, Die-formed vertical ribs on 12" centers, 3-way rear-gate system Truck lengths 18', 20', 22', 24' Height 60"

**STEEL CITY STAKES**



Adapts perfectly to several hauling needs 16-gauge corrugated steel slats welded to 14-inch gauge steel stakes Lengths: 8-24 feet Height 40" Also available with hardwood slats riveted to hardwood stakes

**OBECO STEEL SIDES**



Big load muscle 16-gauge, cold-rolled, die-formed, corrugated steel Optional foldowns, top-tops. Available lengths: 8'-24' Available heights: 40", 48", 54"

**OBECO HOISTS**



Matched to your hauling needs! Twin Cylinder models designed for bodies up to 24' and capacities of 32 tons. Single cylinder hoists, up to 16', capacities up to 21 tons



**UNI SYSTEM**



**ANNVILLE EQUIPMENT CO.**

470 Palmyra-Bellgrove Road, Annaville, PA 17003  
717-867-4631 1-800-233-0520

We provide parts & service for new leader spreaders. Building the best since 1939.