

BUY, SELL, TRADE OR RENT THROUGH THE  
**CLASSIFIED ADS**

**CHAPMAN**

FORD LINCOLN MERCURY NISSAN

**LEBANON**

717-272-7671

Parts Dept. Open Daily 8-5  
Sat. 8-12 717-273-8168



20th & Cumberland Sts.

Rt. 422 West

9-9 Daily, 9-5 Sat.



**New 2000 FORD HARLEY  
DAVIDSON F150**  
Super Cab, Loaded, Black



**98 NISSAN FRONTIER**  
5-Spd., Air, Low Miles



**97 FORD F150 SUPER CAB**  
Lariat, 5.4L V8, AT, A/C, 2WD, Most  
Options, 25,000 Miles, Black, #P4474  
**\$20,998**



**2000 NISSAN FRONTIER  
CREW CAB** 4x4, V6, Auto, Loaded,  
Off Road Pkg., #P4537



**95 JEEP 4x4**  
AT, A/C, Low Miles, #P4541



**97 FORD EXPLORER  
SPORT**  
4x4, Loaded, #PL4488A



**97 NISSAN PATHFINDER LE**  
Leather, Moon Roof, Auto, Air, CD  
#P4538



**99 FORD EXPEDITION**  
Leather, Moon Roof, 3rd Seat,  
One Owner #P4540



**93 CHEVY S-10 4x4**  
Auto, Air, Must See

**Credit Problems? Call 1-888 CARS 4 You**  
**TRUCKS - UTILITY VEHICLES - TRUCKS**



**1987 Volvo, 18' Lightweight Steel Box.**  
New Hoist, Rebuilt 300 HP Engine,  
New Clutch, 8 Speed LL Trans., New Tires  
All Around, New A/C, Electric Tarp,  
18K Front, 46K Rears, 268K Miles.  
\$25,500 OBO  
**(610) 373-0990**

**RIVER'S TRUCK CENTER, INC.**

**W** 2975 Cape Horn Road  
Red Lion, PA 17356  
**(717) 244-4903**  
Now Providers of New Western Star Trucks, Slots Available



**1979 RAVENS 40'**  
Aluminum Flatbed Trailer  
w/Sides and Tarp, Good  
Tires, Many Uses



**1987 MACK TANDEM  
AXLE DAY CAB**  
E-6 275, 5 Speed, Air  
Ride, Aluminum Wheels,  
Low Miles, Clean **\$10,900**



**2001 WESTERN STAR 3700**  
Cat 3126 @ 275 HP,  
9 Speed, 33,000 GVW,  
Air Brakes, 10' Dump  
Body, A/C, Pintle Hook,  
Ready to go!



**1979 MACK MR, Diesel,**  
5 Speed, 33,000 GVW,  
Good Tires, 2000 Gallon  
Pumper Tank And Hoses  
Call

Call for this and all of your Western Star needs!

**AL HAMILTON USED TRUCK SALES**

P.O. Box 157 • 55 Doe Run Road • Manheim, PA 17545

Phone: 717-665-7145 • Fax 717-665-2137

★★ "CLEANEST TRUCKS AROUND" ★★  
**SUMMER SALE All Prices Reduced!**



**'95 INT. 4700 C&C**  
DT408, 5 Spd. Trans, Hyd.  
Brakes, Custom Int., A/C,  
WB 168, CA 108, 25,500 GVW  
**\$22,500**



**'92 FORD LN8000**  
C&C, 7.8 Ford Diesel, 210 HP,  
6 Spd. Trans., Custom Cab, Air  
Brakes, 234 W.B., 168 C.A.,  
33,000 GVW **\$18,500**



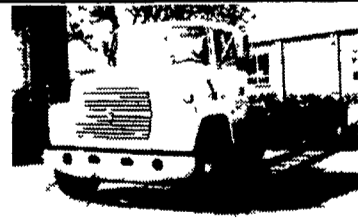
**'94 FORD F700**  
C&C, 429 Gas, 5 Spd. Trans.,  
14,000 Actual Miles, 207 W.B.,  
140 C.A., Like New  
**\$19,500**



**'84 INT. 1900**  
12' Grain Body Dump, DT466,  
210 HP, 5 Spd Trans., 2 Spd.  
Rear, Hyd Brakes, 25,500 GVW  
**\$4,500**



**'87 FORD LN 8000 C&C**  
7.8L Ford Diesel, 240 HP, 6 Spd  
Trans, Custom Cab, A/C, Air  
Brakes, 222 W.B., 156 C.A.,  
33,000 GVW **\$16,500**



**'95 FORD LN8000**  
C&C, 8.3 Cummins, 210 HP,  
6 Sp. Trans., Custom Int.,  
Air Brakes, A/C, 260 W.B.,  
192 C.A., 35,000 GVW **\$23,500**



**'93 INT. 4900**  
w/18' Morgan Box & Lift Gate, 8'  
High, 102" Wide, DT-466, 5-Spd.  
Trans., 35,000 GVW, A/C, Air  
Brakes **\$19,500**



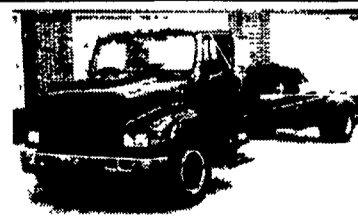
**'93 INT 4900**  
C&C, DT 466, 6 Spd Trans.,  
Custom Int., A/C, 32,000 GVW,  
254 W.B., 186 C.A.  
**\$19,500**



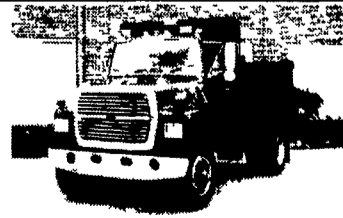
**'78 FORD LTS 9000**  
15' Dump, 6-71 Detroit, 4x4  
Trans, 60,000 GVW,  
Nice Older Truck  
**\$12,500**



**'85 INT. 1700 16' FLAT DUMP**  
9L Engine, 5 Spd Trans., Hyd  
Brakes, 25,000 GVW  
**\$14,500**



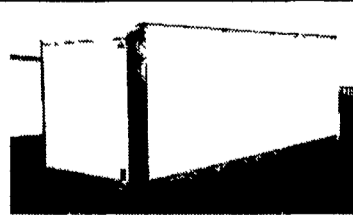
**'94 INT. 4700 C & C**  
DT408, 5 Spd. Trans,  
Hyd. Brakes, A/C, 254 W.B.,  
186 C.A., 25,500 GVW  
**\$21,500**



**'89 FORD LN8000**  
New 10' Dump, 7.8L Engine,  
240HP, 6-Spd. Trans.,  
33,000 GVW  
**\$21,500**



**'96 INT. 4900 C&C**  
DT 466E, 250 HP, 6+1 Trans,  
Air Brakes, A/C, Custom Int  
WB 254, CA 186, 33,000 GVW  
**\$26,500**



**USED VAN BODIES**  
18-22-24 (1) 24' w/96" Door  
**Starting \$2,000**



**'98 EAGER BEAVER**  
10 HA-PT, 22' Deck, 6' Ramps,  
102 Wide, Air Brakes,  
25,000 GVW, Brand New  
**\$9,500**