

**32A ANTIQUES**

Model T Ford Motors w/ Transmissions. Narrow & Wides Bands. Good Running Cond., 717-362-3402

**33 RECREATIONAL VEHICLES**

2000 travel trailer, 42', 2BR, 2 slide outs, washer/dryer, C/A, awning, many extras, \$18,500. 717-665-9624.

Honda Recon ATV, 2000, 250CC, 2x4, \$2800 obo. red, like new. Bucks Co 215-860-6501 eves

**35 TRUCKS AND TRAILERS**

22' Van body, Morgan, FRP, ex cond, \$1500. 410-810-2883

1999 F350 XLT extended cab, power stroke dsl, 4x4, dual rear whl, automatic, loaded, 13k miles, \$31,000. 717-656-2623

16' truck bed, 42" sides w/grain chute, \$250. Lanc Co 717-284-2115.

'77 Int. tri-axle 18' alum dump, Cummins, 13 spd RR. \$6000 obo. '73 Mack DM tri-axle, 16' alum dump, inspected, \$9000 obo. 717-597-5623

1985 Freightliner conventional 3406 Cat, 15spd, 60" sleeper, long wheel base would make good cab & chassis for 20' dump. 717-597-5623.

1986 Dodge 350 Flat Bed Dump Truck 4spd Rebuilt Eng. Must See \$6600 215-784-9292

Volvo Truck 20' Van Body, 29,000 GVW 102K Actual Mi. 717-993-2375

Fontaine air slide 5th wheel, best offer. 610-932-8999

'89 Ford Super Duty, mason dump, 460, 5 spd, 45k miles, snowplow, & tailgate spreader, \$8500. 610-269-3442

94 Ford pickup F250 long bed, ext. cab, XLT, 4WD, 5spd, loaded, 106k, \$9900 OBO. 610/913-8370 eves.

Ford 1977 F-250 4WD 4spd 400 Motor, Great Mechanical w/8' Service Body \$1500 717-382-1489

69 Chevy 3/4 ton pickup, rear duals, \$3500 OBO. 410-692-9221 after 6pm.

\*400 Mack Eng, Comp. Rebuilt w/Only 21K MI on Rebuilt. Mack 40K LB Air Ride Susp; \*93 Mack CH-613 Elite Int. 48" Sleeper E7-350 Eng, 9Spd, Exc Shape. 717-359-9355

96 Ford F350, power stroke dsl, XLT, crew cab, full bed, 2WD, PL, PW, auto., keyless entry, 58,000m, \$19,900. 410/329-5013.

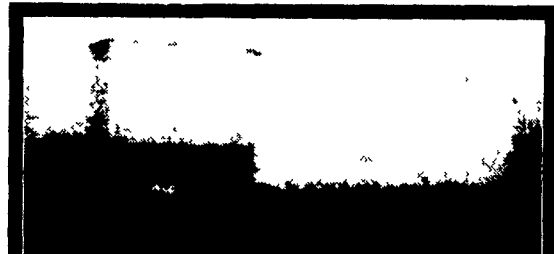
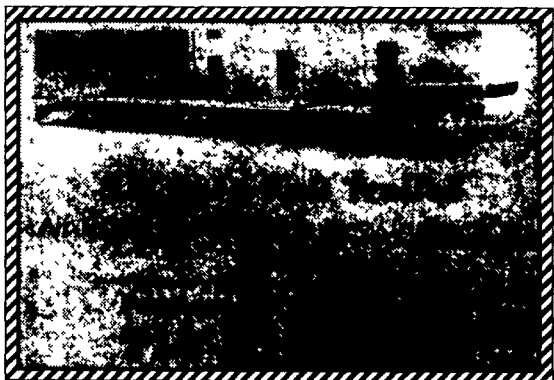
Peterbilt 1978 double bunk COE, recent rebuilt 400 BC Cummings, 13 spd, wetline, 75% brakes & tires, no caps, vg cond, inspected, \$6500. 610-469-0593

'90 Ford XL F350 single rear whl. w/8' Reading utility body, 351 auto, PS, PB, air, AM-FM, 9,000 GVW, 86,000 one owner miles, new radials, red, excellent condition, \$7,900. 717-733-2873

'87 Suburban GMC 4WD, reliable, roof rack, new tires, towing pkg, running boards, needs paint, 160k miles, \$2500. 610-286-1655 day; 610-942-4370 eves

Gooseneck trailer 20', new tires, elect winch for flex axles. 814-674-8119.

'86 Ford LTL9000, 400 Cat, Jake brake, sleeper, 13 spd, make offer. '85 Timpfe reefer, 46x96', good floor, can be used for potato hauling! 717-468-1884



**1998 CAR MATE GOOSENECK TRAILER**  
8' wide, 8' high, 28' deck, 36' total, steel floor, side door, elec. brakes, 8k oil bath axles, hyd. elec. legs, lift to dock high - **\$5,500**  
**(717) 432-1095 • Dillsburg**

**East Coast Trailers**  
Honesdale, PA • 570-729-8870

25' 20,000 lb. gooseneck.....\$5,300  
23' 14,000 lb. gooseneck.....\$3,595  
Other Models & Sizes in Stock

**1990 F150 XLT Lariat**  
77,800 Miles, 4 Wheel Drive, A/C, Auto  
**\$7,500**  
**(570) 754-7022**

Isuzu FSR dsl, 1987 w/16' steel dump body, 4' sides, barn door back, good dependable truck, 160,000 ml, needs brakes, \$5500. 410-239-9555.

'99 20' Gooseneck trailer w/4' Beavertail ramps, 12,000 GVW, used 3 months, \$3400. 410-848-1330

**1997 FORD F350**

7.3 Diesel Engine, Automatic Transmission  
**\$17,900 Or Best Offer**  
**Farmersville Equipment**  
**717-354-2150**

**BOWERS USED CARS INC.**  
Route 30 West of Abbottstown, PA  
7015 York Rd. 717-624-7072  
www.bowersusedcars.com

	<b>98 CHEVY K1500 SILVERADO CLUB CAB 4X4</b> 3rd Dr 350V8 Auto, PS PB, AC PW&L, R Title, 52,000 Miles Very Nice Truck <b>\$16,900</b>		<b>90 CHEVY 3500</b> Ext Cab Silverado, 4x4, 454 V8, Auto Equipped <b>\$8,995</b>
	<b>98 FORD EXPEDITION XLT</b> 5.4 V8, Triton, Equipped 3rd Seat <b>\$18,500</b>		<b>1997 DAYBREAK BY DAMON</b> 33' Motor Home, 460 V-8 Ford, Central AC & Heat Rear Camera Driver Door 17,000 Miles <b>\$34,900</b>
	<b>94 CHEVY ASTRO EXT VAN AWD</b> Gladiator Pkg Equipped, 112,000 Miles <b>\$6,995</b>		<b>94 CHEVY 1500</b> V6 5 Speed PS PB <b>\$4,995</b>
	<b>97 DODGE CARAVAN</b> 1 Owner, V6 A PS PB AC PW & L 103,000 Miles <b>\$7,995</b>		<b>95 FORD EXPLORER XLT</b> 4x4 V6 Auto PS PB AC Equipped 119,000 Miles <b>\$9,995</b>
	<b>93 CHEVY S10 BLAZER TAHOE LT</b> 4 Dr V6 Auto AC PS PB Equipped 94,000 Miles <b>\$6,995</b>		<b>97 FORD F150 XLT</b> 4x4, Ex Cab 3rd Door, V8 Auto PS, PB AC 104,000 Miles <b>\$15,900</b>
	<b>89 GMC 1500 SLE JIMMY 4x4</b> 350 V8, Auto AC PS PB Mint Cond <b>\$5,995</b>		<b>97 FORD F150 LARIAT</b> Ex Cab 3rd Dr 8' Bed 5.4 V8 Auto AC PW&L 41,000 Miles <b>\$18,900</b>
	<b>99 SKI-DOO MACHZ</b> Rotax 800 Triple 1,000 Miles <b>\$6,500/OBO</b>		<b>92 FORD RANGER CLUB CAB 4X4</b> V-6 Auto PS PB, AC PW&L 93,000 Miles <b>\$6,995</b>
	<b>86 Ford F600 15' Box</b> V-8 Gas 5 Speed, 21,200 GVW New PA Inspection Very Good Truck <b>\$4,000</b>		

**USED TRUCKS & CARS**

	<b>94 Mazda B4000, 4x4, V6, 5 Sp, AM/FM CD, PS, PB, PL, PW, A/C, Tilt, 6 mo. 6500 mi warranty</b> <b>\$10,450 or \$3,135 Down</b>		<b>89 Mazda B2200 Short Bed, 4 Cyl, 5 Sp, 3 Mo, 3500 Mi Warranty \$3,250 or \$975 Down</b>
--	--	--	--

**Vans Available For Amish Hauling. Cars, Trucks & Vans in Every Price Range Financing Available. Tag, Title & Notary Service**

**Dozens of Cars & Trucks - Call For Complete Listing**

**88 GMC S15, 5 sp, 4 cyl, w/cap \$2,450 or \$735 Down**

**CAR CORRAL**  
925 Robert Fuiton Hwy, Quarryville, PA 17566  
**717-786-5131**  
Mon-Thurs 9-8, Fri 9-9, Sat 9-5

**FOR SALE**

**95 GMC HD 3500 CHASSIS CAB, 6.5 High Output Turbo Diesel, AT, A/C, Heavy 15,000 GVW, 161 W.B., 84" C.A., Waiting For Your Body \$14,900**

**95 CHEVY HD 3500 CHASSIS CAB, Beautiful Silverado Loaded Cab, All Options, Only 44,000 Miles, Heavy 15000 GVW, 161 W.B., 84" C A \$17,900**

**Car Village, Lebanon**  
**1-800-650-1420**

**Providence**  
Chrysler • Plymouth • Dodge • Jeep  
Part of the Lancaster County Motors Family of Dealerships

**NEW 2001 DODGE RAM REG CAB 2500 SLT 4x4**  
Cummins Turbo Diesel auto trailer tow snow plow prep antispin camper special!  
MSRP: \$34,145, -\$3,850 Providence Disc, -\$1,000 Factory Rebate, -\$500 Farm Bureau Rebate  
**NOW \$28,795!**

**NEW 2001 DODGE RAM 2500 QUAD CAB SLT 4x4**  
Cummins Turbo Diesel sport pkg auto trailer tow camper special!  
MSRP: \$36,800, -\$4,150 Providence Discount, -\$1,000 Factory Rebate, -\$500 Farm Bureau Rebate  
**YOU PAY ONLY \$31,150!**

**PRE-OWNED SPECIALS!**

**'99 Dodge RAM SLT QUAD CAB 2500 4x4**  
Cummins Turbo Diesel! Sport pkg, auto, tow pkg, 17K miles  
**NOW ONLY \$29,350!**

**'99 Dodge RAM REG CAB 4x4 2500 ST**  
360 V8, automatic, air conditioning, under 20K miles!

**'97 Dodge RAM CLUB CAB 2500 4x4 SLT**  
360 V8, automatic, long bed, only 37K miles!

**'97 Dodge RAM REG CAB 2500 SLT 4x4**  
360 V8, automatic, air cond., PW, PL, only 38K miles!

**SALES MON-FRI: 9AM-9PM SATURDAY 9AM-4PM**  
**HOURS:**  
**Call Toll-Free 877-288-9996 or Phone 284-9900**  
**804 Lancaster Pike, Quarryville**  
**Rt. 272, Just South of Lancaster**  
**www.providenceautos.com**  
**e-mail: Vehicles@lannews.infi.net**

**1972 Peterbilt**  
Power Steering 300 Gal. Alum. Tanks, Hydraulic Hitch 435, 13 Spd. Mobile Home Tooter Inspected  
**\$4,500 Best Offer**

**1978 Ford**  
14 Ft. U-Haul Trk. Alum. Box, 430, 4 Spd, Inspected  
**\$3,500 Best Offer**

**1979 Ford Bronco 351**  
4 Spd With Granny Gear, Inspected  
**\$3,500 Best Offer**

**1980 Ford Custom Trk.**  
9 Ft. Steel Bed With Class 3 Hitch & Hitch For Gooseneck Trl, 3 Axle Trk With 4 Wheel Drive, Button Tuck Interior, Lincoln Continental Seats, 400 4 Barrel, 4 Spd. Power Steering, 33x12.50 15 Tires Inspected, 14,000 GVW  
**\$6,500 Best Offer**  
**717-627-4978 or 717-627-7358**