

**PRESSURE WASHERS & SUPPLIES SALES & SERVICE**

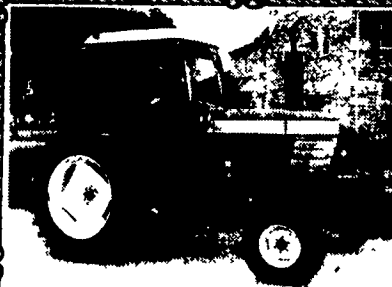


**Beco EQUIPMENT**  
252 N. Shirk Rd.  
New Holland PA 17557  
717 354 2354  
Mon - Fri 7AM - 5PM • Sat 8-11AM

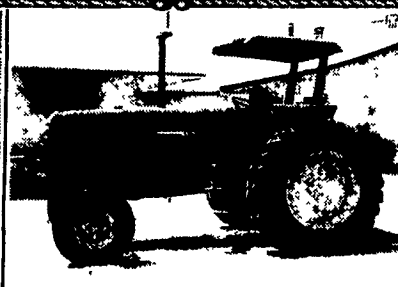


**NH 790 with Crop Processor and Corn Head and Grasshead..... \$16,500**

**GEORGETOWN HYDRAULICS**  
Answering Service  
610-593-2753 • 8 to 10 A.M.



**Ford 7710, Cab, Air, DP, Dual Remotes, 3,500 Hrs**



**John Deere 2950, Canopy, Hi-Low, Dual Remotes, 18.4x34, 3,900 Hrs**

**FORD TRACTORS**

- TW15 II, cab air 4WD 18 4x38 2 800 hrs
- TW15, cab air 4WD w/Ford 7413 ldr 3 600 hrs
- 9700, DP dual remotes, **SOLD** 6 800 hrs
- TW10, cab, air 18 4x38 DP dual remotes 5 600 hrs
- 7740 SLE, cab air 4Wd Ford 7411 ldr 300 hrs
- 7710, cab air DP dual remotes 3 500 hrs
- 7710, canopy, DP dual remotes 16 9x38 4 900 hrs
- 7610, 2WD DP dual remotes 18 4x34 4 700 hrs
- 6640 SLE, cab, air 18 4x34 2 700 hrs
- 6610 II, rollbar DP dual remotes 1 600 hrs
- 6610, dual remotes, 8 spd 18 4x30 3 400 hrs
- 545D, 4WD 4 post, 8x8 shuttle w/ldr. 1 000 hrs
- 5610, 4WD, rollbar 16 9x30 1 200 hrs
- 5030, 4WD canopy, 8x8 shuttle 16 9x30 2 400 hrs
- 4835, 4WD dual remotes 12x12 shuttle 200 hrs
- 4610 II rollbar 16 9x30 1 remote 700 hrs
- 4000 SU, gas, 8 spd 13 6x28 1 remote 2 000 hrs
- 4000, diesel, 8 spd dual remotes 15 5x38 1 700 hrs
- 3930, rollbar 8x8 shuttle 500 hrs
- 345D, 4WD 8x8 shuttle w/ldr 1 700 hrs
- 3000, diesel 8 spd PS LPTO 2 600 hrs
- 3000, gas 8 spd PS LPTO 2 400 hrs
- 1300, diesel 4WD ldr ag tires 1 200 hrs
- 1210, 4WD hydro turf w/60 mower 800 hrs

**JOHN DEERE TRACTORS**

- 6300, canopy syncro 15 5x38 dual remotes R&P axle 1 000 hrs
- 2950, canopy hi low dual remotes 18 4x34 3 900 hrs
- 2755, cab air hi low dual remotes dual PTO R&P axle w/JD ldr 2 800 hrs
- 2755, cab air hi-low dual remotes 18 4x34 3 100 hrs
- 2755, rollbar canopy hi low dual remotes 18 4x34 R&P 540/1000 w/JD 245 ldr 4 600 hrs
- 2550, 4WD canopy hi-low 540/1000 w/JD 245 ldr
- 2020, diesel 1971 1 owner JD loader 3 900 hrs

**EQUIPMENT**

- NH LX885, skid loader 2 500 hrs
- Gehl 125, grinder mixer w/unload extension
- NH 28, blower one owner
- Ford, 3 btm 3 pt plow
- Ford 7411, loader w/40 series brackets
- Bush Hog 3425, QT loader fits 7710 2WD
- Dunham 22 Loader w/valve Ford 4000 brackets
- Weights to fit most Ford tractors

**\* Lease & Financing Available \***  
**\* Please Call For Appointment \***  
**\* All Tractors Tested On Our Farms \***  
**\* Tractors Stored Inside \***

**Burkholder Bros.**

Lebanon, PA 17042

(2 miles from Schaefferstown on Rt. 419 South Turn right on Flintville Rd.)  
2 Locations

717-272-2352

Lloyd Burkholder  
330 Crest Rd., Lebanon, PA

717-949-2123

Leon Burkholder  
400 Flintville Rd., Lebanon, PA

**Retire Your Current Spreaders!**

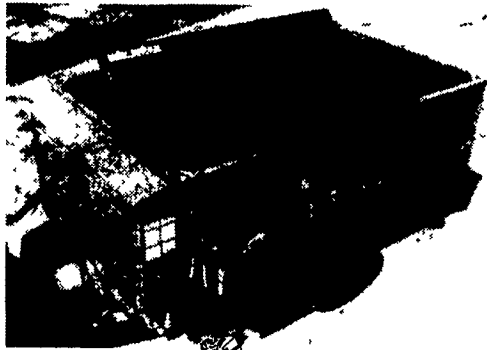


**KNIGHT PRO-TWIN SLINGER**

Stop by and see KNIGHT Models  
8014 (300 bu.) & 8018 (400 bu.) Slinger  
Spreaders and 1030 Box Spreader



**A Better WAY to Process HAY!**  
The Reel Auggie® HAY MAXX® SYSTEM



Stop by and see the 3030 Trailer and  
3015 & 3025 Stationery Models Today!

**ROVENDALE AG & BARN EQUIP.**

WATSONTOWN, PA 17777

570-538-9564 OR 570-742-4226

Exit 31, I-80 to I-180 Watsonstown Exit

Hours: Mon.-Fri. 8 to 5;  
Sat. 8 to 12



**GRINDERS & MIXERS**

- Gehl 125 w/Scales
- NH 352 long auger extra sharp
- NH 351 long auger
- NH 357 w/fold unloading auger nice
- Farm Hand tub grinder

**LOADERS & SNOW BLOWERS**

- USED SNOW BLOWERS 5' - 8'
- Like new 8' 3pt snow blower
- Leon 12' dozer blade w/center pole ex cond
- JD 12 HD dozer blade
- Ford Side Arm Loader Off 860
- Ford Loader off 800 Ford
- 10' & 12' Dozer blade 100hp & up tractors
- JD 2010 ind loader
- 9 extra loader buckets
- Ford HD Loader w/Pump & Valves \$1 500
- Farmall M TA, WF, power steering
- Kelly w/Hyd Bucket & Pump, Valves Tractors w/Loaders
- Snow Blades for Loader or Front Mounted

**TRACTORS**

- All 3 Just Out of Iowa
- IH 706 gas, WF, flat top fenders real clean
- IH 560 gas, WF, real clean
- Farmall M TA, WF, power steering
- Farmall 300 utility, PS & loader
- AC 7000 diesel, new tires
- (2) Farmall 560, diesel, needs motor work
- Farmall 806 diesel, 3pt, WF
- MF 65 gas, 3pt
- AC XT190 diesel **SOLD**
- Farmall 230 w/3 pt, new paint, nice
- Farmall 460 gas
- White 2-70 diesel w/2900 hrs, nice
- AC WD45, new paint \$1,675
- Ford 861 ind gas w/loader \$5,950
- Deutz D130-06 4WD w/cab, 3400 hrs, nice
- AC 185 diesel, cab, 4600 hrs, real clean
- Need a big heavy tractor & loader for silage & big bales, JD 600 dsl ind power shift, shuttle shift
- Farmall 340 gas, PS, new paint
- IH 1066 diesel, cab, no 3 pt w/Case IH 2350 loader, big bucket, \$9,350
- Ford 871 Gas, PS, Rear Tire Weights, w/or Without Ford Loader, Excellent
- IH 400 Gas Standard On Steel, \$2,000
- 1976 IH 1066 black stripe, cab, air duals, nice

**HAYBINES & ELEVATORS**

- Vicon or Gehl discbine
- NH 477 7' roll exc \$2 500
- MF 9' haybine \$675
- NH 469 9 \$1 800
- 40 Buffalo Valley used very little
- 45 JD PTO w/10 drag line
- Owattna 51 w/10 drag line PTO
- Owattna 45 w/10 drag line PTO
- JD 1209 9 \$2 500
- JD 1209 9 \$1 500
- NH 469 9 \$1 500
- IH 990 haybine 7
- Deutz Allis discbine
- JD 1360 discbine looks good needs work
- NH 488 nice
- MF 725 7' bad roll real nice
- MF Flair Mower

**SPREADERS**

- NH 679 tandem axle good shape
- NH 520 PTO nice
- NH tank spreaders
- NI PTO spreaders

**MISC.**

- 4R & 6R 3 Pt. Cultivators
- MOWERS/ROTARY MOWERS
- Finish Mowers, Sickle Bar Mowers, Stalk Cutters, Batwing Mowers
- All different sizes

**WAGONS**

- (2) Badger Unloading wagon, 3b w/roof
- (2) Badger, 3b w/roof, tandem axle
- Little JD 2b Unloading Wagon, no roof
- Dump wagon w/grain chute
- New Hoover running gears
- New Stoltzhus bale rack beds w/or without running gear
- MF 3 beater unloading wagon w/roof
- 12 Richardson side dump
- (5) 165 Bushel Bin Wagons
- (2) Unloading
- (3) Bale rack **New Stoltzhus bale rack wagons**

**DRILLS, PLANTERS & PICKERS**

- NI #323 1R, nice
- JD #18 1R nice
- Farmall Super M w/NI 319 2R mounted picker
- NI 802 diesel hydro, 4x4 w/gray 839 husker w/6R 30", 4R 30" 4R 38"
- NI 325, 2R 30" 12 roll bed sharp
- NI 325 2R 30", 8 **SOLD** sharp
- NI 702 gas w/husker & 3R 30" corn head
- NI 706 Perkins, 6 cy **SOLD** w/737 husker & 4R 30" corn head
- NI 325 2R 30" 12 roll bed
- AC 800 4R 30" no-till
- White 5100 4R 30" no till-, sharp
- IH 56 4R
- NI 325 2R 30" 12 roll bed
- NI 325 2R 30" 8 roll bed

**ALL COMBINES SOLD - FREE PARTS FOR ONE SEASON IF IN OUR PARTS LOT**

- IH 400 air 4R 30" w/monitor nice
- JD 7000 4R 30" no-till
- IH 620 bean drill w/grass seed & press wheels
- IH 5100 drill w/press wheels & grass seed real nice
- Oliver #5 1R A-1 Picker
- IH 5100 drill w/grass press wheels & tire rake nice
- AC 333 6R 30" air no till w/monitor
- NI 2R 38" w/12 roll bed sharp
- JD 300 w/2R or 3R 30"
- (2) NI #10 1R
- White 5400 no-till monitor \$1,350
- AC 600 4R no-till planter \$1 000
- JD 1440 no-till 4R planters
- AC 4R no-till planter \$1,250
- John Blue field sprayer w/wheel drive pump
- JD 7000 6R 30" no-till dry fert & monitor real nice
- Ford Planter, 309 2R 3 Pt
- (2) IH 620 drills w/press wheels & grass seed, \$2,650/ea
- IH 800 planter 4R 30" dry fert
- IH 400 AIR, 4R

**GRAIN DRYERS**

- Linsley dryer
- Behlem used very little, like new

**CORN & GRAIN HEADS**

- (21) JD 6R & 4R
- (13) NH 6R & 4R
- (12) MF 6R & 4R
- (7) White 6R & 4R
- (35) AC 6R & 4R
- (12) IH 6R & 4R
- (6) NI 6R & 4R
- (3) JD 3R 30"
- (3) JD 2R 38"
- (5) AC 2R 38"
- (6) AC 3R 30"
- (1) IH 2R 38"
- (3) IH 3R 30"
- (2) NI 3R 30"
- (13) NH Grain Heads
- (21) MF
- (5) White
- (29) AC
- (15) IH
- (7) NI

**COMBINE FOR PARTS JUST IN**

- AC F, (2) F2 G2, M2, L, LII, MII E E3, K, N5 Rotary, K2 diesel, G
- Case (2) 660
- Ford 642
- IH (3) 915, 815, (3) 715, 93 (2) 315, 403, 503
- JD 8820 w/4x4, 6600 Side Hill, 6600, 6620, 7720 Titan II, 7720 4x4, 5900, 7720, 4420, 3300, (2) 45 sq back, (2) 7700
- MF (2) 760, (2) 750, 850, 510, 550
- NH (2) TR75, (2) TR70
- NI (2) 702, 705
- Oliver 525, 545
- White 8600, 8700, 8800

**BALERS & RAKES**

- NH D200 big baler, w/cumulator real clean

**65-COMBINES 250 heads to choose from**

- NI wheel rake
- NH 276 w/58 thrower sharp
- JD 14T w/chute
- NH 69 w/chute
- JD 890 rake \$875
- JD 14T w/kicker
- NH 852 round baler
- NH 486 round baler
- NH 268 baler w/thrower clean
- IH 241 round baler
- Gehl 1500 belt round baler 5x5
- Blue Ford w/or without thrower
- JD 346 w/kicker
- (2) JD bale throwers
- NH 259 right hand rake
- Heston inline baler
- NH 1010 bale stack wagon

**DISC - FIELD CULTIVATORS & CHISEL PLOWS**

- AC F2 diesel trade in
- NI 717 nice
- AC #60 pull type, w/AC B motor w/clutch
- (2) Late AC F2 diesel, turbo, roll out auger, hill side blower, real clean
- Late IH 915 hydro diesel, trade in
- White 8600 diesel, trade in
- MF 550 gray cab, gray unloading auger gear drive, 2150 hrs, super sharp
- Late IH 815 diesel, hydro, non-cleaner JD 40 w/heads, clean
- AC L hydro **SOLD**, sharp
- Late AC F2 gas, hill side blower sharp
- 1981 NH TR85 Cat hydro 2800 hrs, sharp
- 1987 NH TR86 Ford hydro, 2500 hrs, sharp
- Late gray cab MF 750 hydro diesel trade in
- NI 705 w/767 chopper
- Late JD 4400 dsl, 2450 hrs, trade in, nice
- JD 7700 diesel hydro, 3200 hrs
- Late AC F2 roll out auger diesel, hydro, 1350 hrs sharp
- 1982 AC F2 hydro diesel w/heads
- (2) NH TR70 cat diesel trade in, choice \$6,500
- MF 205 w/heads
- JD 4400 diesel, 2800 hrs, nice trade in
- JD 8820 hydro diesel, 4x4 trade in, good runner
- Late AC F2 **SOLD** diesel, sharp
- NH TR70 hydro diesel
- MF 860 hydro diesel, chain feeder housing, nice
- AC G diesel w/heads
- Late AC F2 turbo, roll out auger w/heads, real nice
- 1979 IH 1460 rotary, 3300 hrs sharp as they come \$15 000
- MF 410 gas w/heads
- JD 45 w/heads, real clean
- IH 1480 rotary 4WD, looks rough runs real nice, good buy
- JD 4420 diesel, runs nice
- Late gray cab, MF 550 hydro Diesel \$7,500
- Late AC **SOLD** ads sharp
- IH 715 hydro diesel, sharp
- Late AC M2 hydro turbo diesel same as M3
- MF 850 hydro diesel chain feeder sharp

- IH 715 gas nice
- AC F11 roll out auger 2650 hrs nice
- JD 7720 hydro 4WD
- Late AC M2 hydro sharp same as M3
- Late AC F2 diesel roll out auger real clean
- 1981 IH 1460 rotary elect over hyd 3100 hrs sharp
- 1979 IH 1460 rotary 3 000 hrs sharp
- 1981 JD 7720 heavy axle 3000 hrs sharp
- MF 750 gray cab hydro diesel nice
- JD 6620 side hill 2 600 hrs sharp
- JD 3300 diesel nice
- JD 6600 diesel hydro sharp
- JD 3300 gas low hrs
- IH 815 hydro diesel clean
- IH 915 hydro diesel sharp 310 motor
- MF gray cab 550 hydro diesel
- Late Model IH 715 310 diesel hydro 1325 hrs super sharp
- Late JD 4400 diesel real nice
- IH 915 hydro diesel sharp
- Late JD 4400 diesel 2600 hrs black seat clean
- 1981 JD 4420 diesel 2071 hrs super sharp
- Late NH TR85 hydro, new Cat diesel \$12,000
- NH 975 gas, **SOLD** 2 grain
- NI 717, clean
- NI 717 combine
- IH 315 Hydro, Gas, 10' Grain, 3R & 2R 30"

- IH 500 Disc 12
- IH 720 6x16 toggle trip side hill hitch
- IH 5 shank ripper
- IH 450 3x16 3pt spring reset sharp
- JD 220 18 centerfold
- White 271 18 rock flex
- IH 470 12 plow disc
- 3pt & trail chisel plows

**TRACTORS FOR SALVAGE**  
GOOD RUNNING MOTORS

JD 5820 Chopper For Parts, 5460, 5440 SP Harvester, NH 1880 SP, Parts For IH 1440, 1460 Rotaries & NI 717 Combine, NI 802 w/Harvester, JD 4425 500 Hrs., JD 6600 & 6620 Side Hill

**DISMANTLING FOR PARTS**  
Balers Cultivators Drills  
Mowers Planters Spreader  
Combines Discs Tractors  
Pickers Plows

**IH 6000 Disc Chisel, A-1 \$3,975**

- IH 3b fast hitch
- IH 4b fast hitch
- (5) Ford 2b 14 & 16" plows
- (3) Ford 3x14 & 16
- (5) JD 3x14 & 16"

**FLAIL CHOPPERS - HARVESTERS & BLOWERS**

- 50 heads to choose from
- IH 830 chopper w/or without 3R 30 2R 30" & pickup heads nice
- NI 705 diesel w/767 chopper & heads
- NI 802 diesel hydro 4WD w/chopper or husker
- Hushler 56" blower like new
- NH 36 knives like new & new paint \$1,500
- NH 717 2R 30" corn & pickup \$1 250
- NH direct cut head
- Gehl 1580 high capacity blower, real nice
- IH 720 w/heads, nice
- IH 720 w/2R & pickup sharp
- Gehl & NI 2 & 3 row pick up heads and others
- JD 3R 30" head, nice
- NH 3R 30" head nice
- Pickup heads 2R & 3R heads in stock
- NH 38 Flail Chopper
- JD 3800 2R 30" & pickup
- (3) IH 720 w/2R 30" or 38" & pickup IH #8 flail chopper
- IH JD & NH heads in stock

**COMBINES FOR SALVAGE**

- IH 1480, 1460 rotary 915 815 715 615 315 205 203 503 403 303 93 91 105 101 82 80 JD 9500 7720 7700 6620, 6600, 4420 4400 3300 105 95 55 45 40 MF 850 550 760 750 510 410, 300 205 35 AC Gleaner AC N5 F F2, L L2 M M2, K, G E C, C2, A Oliver 7600 545 535 525, 430 NI Uni 802, 709 710 Combine NI 717, Huskers 705, 702 701 Combine Shellers & Harvesters Case 1160 960 700, 660 600 NH 1400 975 985 TR70 NH TR85 MM 5297, 3496, MM Uni White 8800 White 8600, White 8700 Field Boss 7300 Massey 7500 Straw Spreaders & Choppers JD 7720 Motors Transmissions Tires Corn & Grain heads Grain Savers, 1984 JD 6620 Side Hill w/Heavy Steering Axle

**KEITER'S FARM MACHINERY**

Halifax, PA 17032 Rt. 225  
20 mi. north of Harrisburg  
Mon.-Fri. 8-5 • Sat. 8-12  
PHONE: 717-362-9574  
POSITIVELY NO OUT-OF-STATE PERSONAL CHECKS



**Financing or Lease Available WE DO NOT SHIP PARTS**