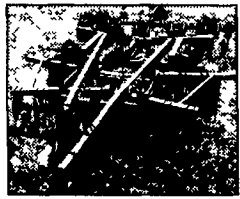
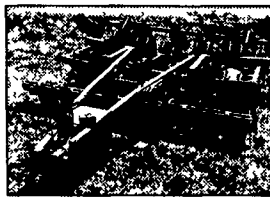


Get Equipped for Fall

Waiver



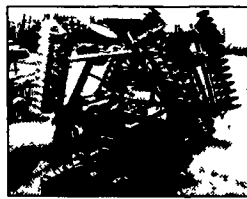
B 19636 DMI 530 Subsoiler w/ Disc Gangs on Front, Lead Shanks, Disc Levelers on Rear, Field Ready, SALE PRICE \$17,500



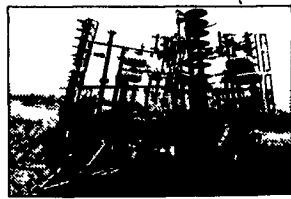
B 22866 DMI 730 7 Shank Eco-Tiger Chisel Plow w/ Lead Shanks, Disc Attachment, Rear Leveler, Excellent Condition, WAS \$13,900, IS \$12,900



A 22955 DMI Tiger II 5 Shank Subsoiler, Auto-Reset, 12' Working Width, SALE PRICE \$8,500



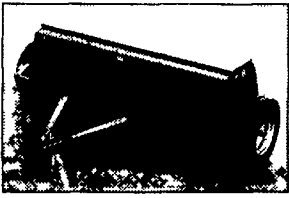
B 19435 Krause 4918 27" Disc, Standard Gang, Center & Wing Duals, Packer Hitch & Hoses, New Blades, SALE PRICE \$9,900



B 22431 Krause 6331 31' Landstar, Field Finisher w/ Star Wheels, For High Residue Management, SALE PRICE \$24,500



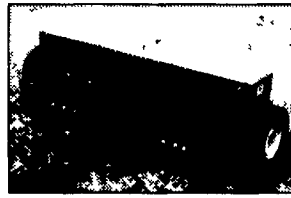
B 19354 MF 820 23' Rockflex Disc, 9 1/2" Spacing, 2 1/2" Blades, Duals on Center, Singles on Wings, SALE PRICE \$5,900



C 22813 CIH 5100 Conventional Drill, 18 x 7, 3" Press Wheels, SALE PRICE \$4,300



B 19196 JD 455 30' Conventional 3 Section Folding Drill, 6" Spacing, 4 x 12 Press Wheels, WAS \$15,500, IS \$14,500



A 22883 JD 8350 12' Conventional Drill, 24 x 6, Double Disc Openers, Excellent Condition, SALE PRICE \$3,500



B 18906 1991 CIH 8580 Baler, Makes 4x4x8, 60,635 Bales, SALE PRICE \$29,000



A 23165 1988 Hesston 4900 Baler, 4' x 4' Bales, Apx 30,000 Bales, Rebuilt, SALE PRICE \$32,500



A 19959 1993 NH 650 Round Baler, 4' x 6', Hydraulic Tie, SALE PRICE \$9,950

USED HAY & FORAGE

- B 40139 CIH 8545 Baler
- B 18906 CIH 8580 Baler
- A 40030 CIH 8585 Baler
- A 23165 Hstn 4900 Baler
- B 40324 Hstn 4900 Baler
- C 31177 IH 435 Baler w/Thrower
- C 23191 JD 530 Round Baler
- A 19959 NH 650 Round Baler
- B 17722 CIH 1490 12' Mower Cond
- C 31455 CIH 8830 Mower Cond
- B 40078 CIH DC515 Mower Cond
- C 22296 JD 1470 12' Mower Cond
- A 22880 NH 1431 12' Mower Cond
- A 23226 NH 499 Mower Cond

- B 18970 KR 4907 25'
- B 19694 KR 4915A
- B 19435 KR 4918 27'
- B 17155 KR 4927A 27'
- B 19610 KR 4942 WR 22 5'
- A 23178 KR 4945 NR
- B 19354 MF 820 23'
- B 16620 ML 28'
- B 19711 TW 58102 20'
- A 23231 TW 12'

- B 19843 IH 800 10x18 Plow
- B 19994 BR 15 Cultmulcher
- C 31456 BR 12 Cultpacker
- B 19932 BR 16 Packer
- B 19191 BR 12 CF Packer
- B 23133 BR 27 Packer
- B 19359 DMI 25 Crumbler
- B 17325 UM 29 Basket
- B 17326 UM 29 Basket
- B 18505 BR 5 Shnk Subsoiler
- A 18868 DMI 500 3 Arm Subsoiler
- B 19636 DMI 530B Subsoiler
- A 23032 DMI 7 Shnk Subsoiler
- B 22866 DMI 7 Shnk 730 Eco-Tiger
- B 19409 DMI ET500 Subsoiler
- A 22955 DMI 5 Shnk Tiger II Subsoiler
- C 19710 BR CPP 10 Chisel Plow
- B 40252 IH 11 Slicer Chisel Plow
- C 19130 FR 10 12 Chisel Plow
- A 23196 KR 2860 Chisel Plow

USED PLANTERS & DRILLS

- B 17790 IH 800 6RN Planter
- C 23011 IH 800 4RN Planter
- C 31352 IH 800 6RN Planter
- B 19754 JD 7000 8R Planter
- B 16778 JD 7240 8R Planter
- B 19387 WH 5100F 8RN Planter
- B 30373 WH 5400 6RN Planter
- C 22813 CIH 5100 18x7 Drill
- A 23119 GP 10' EW NT Drill
- B 16662 GP 15' Drill
- B 40206 GP 15' Drill w/Hitch
- A 23029 GP 400782 24' Drill
- B 18940 GP 30' Drill
- B 40207 IH 510 Drill
- B 40208 IH 510 Drill
- B 19196 JD 455 30' Drill
- C 22782 JD 8300 21x7 Drill
- A 22883 JD 8350 12' Drill

JUST TRADED

- Now to the Middletown Store**
- 40492 KR 4907-25' Disc
 - 40495 JD 7720-4WD Combine
 - 40513 IH 1440 Combine
 - 40420 GP 30' NT Drill
 - 40422 CIH 7140 MFD Tractor
 - 40428 CIH 720 6 x 18 Plow
 - 40436 CIH 5100 Twin Drill
 - 40441 CIH 5250 MFD Tractor
 - 40416 Lilist 12' Chisel Plow Pull-Type
 - 40417 12' Chisel Plow 3pt
 - 40418 Case 1190 Tractor
 - 40430 JD LF Drop Spreader
 - 40446 GP 20' NT Drill
 - 40455 NH 488 Mower Conditioner
 - 40457 IH 674 Tractor w/Loader
 - 40462 IH 1086 Tractor
 - 40463 IH 1586 Tractor
 - 40472 FR 18' Ditcher

- Now to the Lancasterville Store**
- 23112 IH 497
 - 23113 IH 497
 - 23223 NH 499 Mower Conditioner
 - 23228 IH 1420 Combine
 - 23270 KR 4921 Disc
 - 23273 IH 1440 Combine
 - 23279 NH 40 Blower
 - 23282 DL 19' Packer
 - 19959 NH 650 Round Baler
 - 23286 IH 2188 Combine
 - 23287 IH 100 Micro Tractor
 - 23288 CH 4238 MFD Tractor
 - 23289 IH 700 Plow
- Now to the Middletown Store**
- 31551 FM Cab w/80" Undermount Mower
 - 31554 FM Cab w/48" Most Flat Mower
 - 31557 CH 2188 Combine
 - 31558 CH 1020-20 Platform
 - 31542 JD 9500 2WD Combine
 - 31543 JD 843 8RN Cornhead
 - 31544 JD 915 15' Flex Head

USED DISCS

- B 40303 CIH 496
- B 18976 IH 496 34'
- A 23238 IH 475
- A 23172 KR 1577
- A 23166 KR 2483 NR

USED TILLAGE

- A 23010 IH 183 4RN Cultivator
- B 18068 MF 18 Cultivator
- B 18067 UM Cultivator
- B 19931 KR 3115A Landstar
- B 22431 KR 6331 Landstar
- B 40325 SF 4324 24' Landstar
- B 18870 CIH 720 OL Plow
- B 17476 IH 145 4x18 Plow
- B 17477 IH 145 4x18 Plow
- B 17038 IH 710 Plow

Build

Buying a used special Waiver time program

Waiver

Waiver

Warrant

thru Dec

Guarant

Hoover w

upgrade

C 21934 1982 IH

B 40053 1982 IH

A 16020 1984 IH

B 18597 1984 IH

A 17263 1985 IH

B 17866 1982 IH

A 22233 1978 IH

C 30220 1982 IH

B 18509 1983 IH

A 20240 1984 IH

B 15933 1989 CIH

A 18855 1991 CIH

Waiver of on Used Co Until 9/1

Financing Availab Combines Fro

1. Interest Waiver with Balance at St for Up to 60 Month

2. Fixed Low Rate 4.9% for 36 Mo

Fixed Low Rate 5.9% for 48 Mo

Fixed Low Rate 6.9% for 60 Mo

FINANCING OPTIONS CHANGE WITHOU



A 23031 Steiger ST280, 4276 Hours, Tires Front - 23 1x34, Rear - 23 1 x 34 Dual Wheels, 280 HP



B 19217 1997 CIH 7240 MFD Cab, 2209 Hours, 20 8 x 42 Duals, 195 HP



A 22559 1983 JD 4650 MFD Cab, 5800 Hours, Tires Front - 18 4x26, Rear-20 8x38, 540/1000 Pto, 165 HP



A 22784 1999 CIH MX 200 MFD Cab, 513 Hrs, 18 4x42 Duals, 165 HP



B 19587 1992 JD 4560 2WD Cab, 1806 Hrs, 18 4x46 Duals, 156 HP



B 17774 1997 CIH 8920 MFD Cab, 2073 Hrs, 18 4x42 Duals, 155 HP



A 23004 1988 CIH 7120 2WD Cab, 4935 Hours, Tires Front - 14x16 1 - New, Rear - 20 8x38 3 Pti, 151 HP



A 17811 1979 IH 1086 2WD Cab, 4534 Hrs, Tires Front - 11 00x16, Rear-20 8x38, 540/1000 Pto, 131 HP



C 19501 1989 CIH 7110 2WD Cab, 2531 Hrs, 18 4x38 Duals, 131 HP



B 19890 1996 CIH 5230 MFD Cab, 1775 Hours, 18 4 x 34 Duals, 90 HP



C 19554 1977 IH 886 2WD ROPS, 4205 Hours, Tires Rear - 18 4x34, Diesel, 540 Pto, Rebuilt Engine, 90 HP



C 31472 1988 CIH 885xl MFD Cab w/ 2255 Loader, 2809 Hours, Top Link, SMV, Manuals In Cab

150 + HORSEPOWER

NO.	YR	MAKE	DESCRIPTION	HP
A 23031	ST	280	4WD, 23 1 x 34 Duals,	280 HP
B 19203	1978	Vers	875 Cab, 3901 Hours 20 8 Rear Tires,	247 HP
B 19590	1996	JD	8400 MFD Cab, 2386 Hours, 18 4 x 46 Duals,	225 HP
B 18836	1995	CIH	7250 MFD Cab, 1745 Hours 20 8 x 42 Duals,	215 HP
B 19947	1999	CIH	MX 240 MFD Cab 459 Hours,	205 HP
B 19217	1997	CIH	7240 MFD Cab, 2209 Hours, 20 8 x 42 Duals,	195 HP
A 23070	1984	JD	4850 MFD Cab 6971 Hours, 20 8 x 42 Duals,	192 HP
C 23046	1979	Case	2590 2WD Cab 6636 Hours, 20 8 x 38 Duals,	180 HP
C 31092	1980	IH	3788 MFD Cab 6627 Hours, 20 8 x 38 Rear Tires,	170 HP
A 22559	1983	JD	4650 MFD Cab 5800 Hours 20 8 x 38 Duals,	165 HP
A 22784	1999	CIH	MX 200 MFD Cab, 513 Hours 18 4 x 42 Duals,	165 HP
C 19589	1992	JD	4560 2WD Cab, 2280 Hours 18 4 x 46 Rear Tires,	156 HP
B 19587	1992	JD	4560 2WD Cab, 1806 Hours 18 4 x 46 Duals,	156 HP
B 17774	1997	CIH	8920 MFD Cab, 2073 Hours 18 4 x 42 Duals,	155 HP
B 40119	CIH	7220	MFD Cab 2550 Hours,	155 HP
A 23004	1988	CIH	7120 2WD Cab 4935 Hours, 20 8 x 38 Rear Tires,	151 HP
B 19583	1991	CIH	7120 2WD Cab, 2115 Hours, 18 4 x 46 Rear Tires,	151 HP
B 19582	1991	CIH	7120 2WD Cab, 3093 Hours, 18 4 x 46 Rear Tires,	151 HP

100-150 HORSEPOWER

NO.	YR	MAKE	DESCRIPTION	HP
B 40092	IH	1486	2WD,	145 HP
C 19501	1989	CIH	7110 2WD Cab, 2531 Hours, 18 4 x 38 Duals,	131 HP
A 17811	1979	IH	1086 2WD Cab, 4534 Hours, 20 8 x 38 Rear Tires,	131 HP
C 22860	1976	IH	1086 2WD Cab, 4962 Hours, 20 8 x 38 Rear Tires,	131 HP
A 23190	IH	1086	2WD, 5072 Hours, 18 4 x 38 Rear Tires,	131 HP
B 22937	1999	CIH	MX 150 MFD Cab, 491 Hours,	130 HP
A 23186	1993	CIH	5250 MFD Cab,	112 HP
B 40441	CIH	5250	MFD Tractor,	112 HP

Less Than 100 HORSEPOWER

NO.	YR	MAKE	DESCRIPTION	HP
A 23187	CIH	5140	2WD Cab w/loader,	94 HP
B 19890	1996	CIH	5230 MFD Cab, 1775 Hours, 18 4 x 34 Duals,	90 HP
C 19554	1977	IH	886 2WD Cab, 4205 Hours, 18 4 x 34 Rear Tires,	90 HP
A 19381	1969	IH	656H W/Ldr, Diesel, 15 5 x 38 Rear Tires,	66 HP
C 31519	1966	IH	656D,	66 HP
B 19599	1960	IH	460D,	52 HP
C 19755	1976	IH	464, Gear, 7800 Hours, 14 9 x 28 Rear Tires,	46 HP
B 40048	1999	CIH	C50 MFD ROPS w/ldr, 222 Hours, 14 9x28 Tires,	40 HP
B 18252	1970	Case	580 CK w/Ldr, Cab, 1274 Hours, 14 9 x 24 Rear Tires	
B 19898	Case	800,	Gear, Gas, 15 5 x 38 Rear Tires	

Financing Available On All Used Tractors From Hooper

Special Programs Available for Under 100 HP Tractors

- 1) 6 Month Interest Waiver
- 2) Fixed Low Rate Financing - as Low as 7.9% for 36 Months
- 3) Split Rate Financing - 5.25% for the First 12 Months
- 4) Lease Options

Special Programs Available for 100+ HP Tractors

- 1) 6 Month Interest Waiver
- 2) Fixed Low Rate Financing - as Low as 6.9% for 36 Months
- 3) Split Rate Financing - 4.9% for the First 12 Months
- 4) Lease Options

Call a Hooper Salesman Today For Details
Financing Options Subject to Change Without Notice

INTERCOURSE, PA
A 800 732-0017
MIDDLETOWN, DE
B 800 341-4028
McALISTERVILLE, PA
C 800 433-6679

HOOBER

HOOBER, Inc
THREE LOCATIONS

Farm Machinery Runs Better With Hooper's



For a complete list of Hooper inventory, visit our web site.