

Juniata Co, PA. 4.1 ac wooded lot, double perc sandmound, within 5 min of RT322 Mifflintown exit. 717-436-9317

Tioga Co., Farm 40 +/- Ac (more avail) Lrg Barn Cleaner, Mach Shed 54x56 Business Bldg. 3BR Home w/Sunroom, FP, Wood/Nat Gas, BB Heat 570-724-2553

Grade A dairy farm, Clark County, WI. Loyal/Greenwood area. 236 acres, 220 acres tillable, 3BR ranch, 82 tie stall barn, 4 silos, 40x60 & 40x80 sheds, \$354,000. 715/255-8181, Frank Krueger, W5028 26th Rd, Greenwood, WI 54437.

Log cottage, Perry Co, PA. Elec heat & wood burning FP, garage, vineyard. 3.5 ac, stream. 10 mi to Juniata River, access to SG lands. Asking \$74,300. 717-243-9291

142 Ac Farm, Cumberland Co., 103 Ac Crop Land, Boring State Game Lands, No Bldgs. Start Fresh. \$375,000 717-532-8689

117 Ac Farm, Cumberland Co., Nice Lrg 4BR House, Bank Barn, Lrg Shed, Ponds, Mtn Streams, 72 Ac of Cropland. \$375,000. 717-532-8689

Farm/Woolen Mill Opportunity. 78 Ac, restored 1882 farmhouse, 30x50 barn, sm commercial woolen mill. Equipment excellent. Owners will train, \$275,000. Mill equipment & business only, \$80,000. 315-497-3570

18 Ac farm, 3br home w/mountain stone FP, 2 car garage, lg Morion barn, woods & open land, 15 min from Lewisburg, PA. \$169,000. 570-922-1070

For Sale or Rent 198 Acre Dairy Farm, 156/Tillable, (4) Silos, TMR Mixer, 106 Free Stalls, Helper Facilities, Liquid Manure Storage, Milking Parlor w/Auto Take-Off, Equip Storage, (2) Houses. Financing Available. Bedford Co., (814) 839-4271 / (540) 484-7275

Schuylkill Co: 148 ac farm, mostly tillable. 3BR Cape Cod. Roemer Realty, 570-339-5214.

Southern Chester Co, PA. 40 +/- ac all tillable farm, house & barn. \$525,000. Other sub-division options possible. 610-932-4952.

For Sale by Owner House w/approx 3 1/2 Ac along Conestoga River, Millersville. 717-872-7166 717-786-3387

10 Acre Farm Near Manheim, 8 BR, Bank Barn Small Barn, 3 Car Garage, 8 Acre Tillable, Fenced Pasture Can be Subdivided. \$300,000. 717-664-3825

Auction: Sat, October 7, Tourist area, RT 30, Lancaster. Lg comm store, +2 apt. Info Auctioneer Gordon Ressler. 717-687-7402 Lic #AU1575

Wanted: House w/dairy barn for 50 cows or farm to rent, Spring of 2001 in Lancaster or Chester Co. 610-857-9237.

30+ AC, 25 Mi North of Reading. 2,800 Ft. Road Front, Woods & Field, Lrg Barn \$125,000. -Owner 570-943-2516

Rare Find! Farmette building lot located just south of New Holland Borough along New Holland Rd, Earl Twp

Driveway & sewage system already installed. View, small stream. 11+ acres all tillable Excellent location **\$259,000.**

Call for plot plan
(717) 569-2222

Older Heritage inc. REALTORS
142 East Main Street, New Holland, PA 17557
717-354-4071

OLD CHARM - mature landscaping easy access to major route 30 turnpike 322 340 10 or 23 Ideal as working farm or pleasure gentleman's farm Over 100 acres of land, good mixture of tillable pasture and woodland 50x73 bank barn with box stalls many storage sheds garages and workshop If you are looking for a farm check this one out **\$969,000**

AN INVESTMENT - that will pay off every month when you own this lovely duplex in Caernarvon Twp 2 bedrooms up & 2 down Washer & dryer, refrigerator & range in each unit Lots of basement storage & plenty of off street parking Renovated in 1993 Must see great value at **\$109,900**

CENTRAL PENNSYLVANIA FARMS, FARMETTES, LAND AND CABINS

Our Farm and Land Division currently has many farms, farmettes, land parcels, and cabins available in central Pennsylvania. We would be happy to send you a free farm and farmette list and/or rural land and cabin list.

See the August 26th or July 29th issues for a complete farm and farmette inventory.

Farm and Land Division

Fred Strouse (814) 364-1705
Mel Rockey (814) 466-6688
Terry Gingham (814) 364-1169
Jim Harpster (814) 238-2525



2300 South Atherton State College, PA 16801
(814) 234-4000
1-800-876-3395

I have many good buyers looking for farms. If you are thinking of selling call me. I will meet with you

This space reserved for your ad. I need farms for several good buyers. Call for an appointment.

Please call if you are thinking of selling your farm or for any farms on market since ad was written.

LANCASTER CO.

Farm sales are strong - Lanc Co farms that I have listed are **SOLD** - Many buyers still waiting for a farm

TIOGA CO.

35 Ac. And 130 Acre Tracts Of Land - No Bldgs, Pond, Stream, Nice Location

WE CAN HELP YOU BUY OR SELL REAL ESTATE



Call Ken Rutt - a life long farmer and real estate investor who can assist you in any sale or purchase of real estate. Creative tax and financial arrangements, low farm mortgage rates. Serving Southeast PA The Best Can Often Cost Less

Office 717-786-1300 Cell Phone 940-9025

HOMESALE SERVICES GROUP
P.O. Box 306, Quarryville, PA 17566
E-Mail: RuttK@LancNews.Infi Net

BRADFORD CO. PA
UNITED NATIONAL NATIONWIDE PROPERTIES
R.R. 1 BX. 303 TOWANDA, PA 18848
TEL. 570-265-5924 FAX 570-265-7657

ACREAGE -
#4993 - 37 ACRES - All woods, accessible year round, perc approved **\$54,900.** Owner Finance
#5017 - 14.39 ACRES - Open and wooded, mountain view, perc approved **\$25,000.**
#5013 - 80 ACRES - Rolling fields, nice woods, dividable, perc approved **\$108,000.**
#4998 - 162 ACRES - Mostly level, 60% tillable, good farmland **\$165,000.** R E s owner
#5016 - NEW FARM LISTING - 300 Acres, operating dairy, good home & outbuildings, bare farm **\$450,000.**

ENDLESS MOUNTAIN REAL ESTATE COMPANY
570-659-5684 end@epix.net
TIOGA & BRADFORD COUNTIES

Tioga County: Check out these 2 combined building lots located at edge of small community, 1.653 +/- acres, NG, electric, & municipal water/sewer hook-up available, pleasant wooded setting w/minimal traffic flow, possible OFIN available to qualified buyer **\$12,500 (#708)**

Tioga County: Park-like setting for this Cedar Log home featuring 3BR, 1 bath, cathedral ceilings, large & beautiful natural stone fireplace separating kitchen & great room, 3 heat sources, full bsmt, over-sized 4 car att garage, pond, small stream, 4 +/- acres, must see! **\$144,900 (#919)**

Tioga County: Very nice ranch home featuring 4BR, 1 bath, great room w/natural stone fireplace, full bsmt, plumbing installed for 2nd bath, FR complete w/2nd natural stone fireplace & patio doors leading out to nicely manicured, fenced in back yard, over-sized 2 car det garage, paved drive, pleasant shade trees. **\$92,500 (#920)**

Check Out Our NEW Web Site!
www.endlessmtrrealstate.com

Koch Homestead Realty MULTIPLE LISTING SERVICE

91 Princeton St Wellsboro, PA 570-724-3500	9 North Main St Mansfield, PA 570-662-3287	403 E. Main St, Elkland pa 16920 814-258-7117
--	--	---

CLEAN, nicely furnished 12 unit motel in attractive setting Includes owner's apt w/3 bdrms and 1 1/2 baths Expansion capabilities with 6 1/2 acres of land Located near soon to be constructed Rt. 15 interchange Call for details **\$265,000. M144**

SPACIOUS raised ranch home in private setting on dead end road Fratures indoor pool & two fireplaces Remodeled kitchen with skylights & new roof and furnace Wooded setting on 8 acres with lake and stream nearby. The peace and quiet you're looking for! **\$149,900. W211**

2 ACRE LOT WITH EXCELLENT VIEWS of country side situated on twp Road Approved soils for sandmound Prime location between Wellsboro and Mansfield **\$20,900. W062**

MOUNTAIN TOP PARADISE! Enjoy the views of Oregon Hill ski slopes from your living room 3 bdrms, 1 1/2 baths, 2 car attached garage, sunroom, and hearth fireplace and a few of the amenities Hunting, fishing, game lands, winery, golfing and small airstrip nearby Grand Canyon only 16 miles away **\$75,500. W071**

Check out our web site www.koch-real-estate.com

RE/MAX *There's the Crowd!*

COUNTRY REALTY, INC
421 LWE, McConnellsburg, PA 17233
FRANKLIN CO. - \$498,500
A Country Estate

An Exceptional Property 104 acres Borders Concocheague Creek Privacy - Seclusion - Views it has it all - rolling acres - outstanding 2 sty home barn & other outbldgs Country Paradise!

SHADE GAP, PA - \$398,500
Huntingdon County- Farm 116 Rolling Acres - stream - beautiful restored 2 sty farmhouse - somewhat remote Good beef farm, large barn & outbldgs

MIFFLIN CO. 2 Mi. N. of Newton-Hamilton - \$275,000
THIS IS IT! 1/2 Mi. of Riverfront - Sportsman's Dream! 62 Acres of Wooded Land - Lovely Home on Riverbank - Outbldgs Great Hunting & Fishing - Private

HUNTINGDON CO., 5 Mi. S. of Mt. Union - \$275,000
Livestock or Grain Farm Borders Augwick Creek - Level Fertile Land Lovely Large 2 Sty Home - Bank Barn & Several Outbuildings

S. BEDFORD CO, PA
46 Acres - \$75,000 - Wooded Exceptional hunting area - owner may finance

FULTON CO - \$149,500
Cape Chalet with panoramic views - 10 acres - joins PA game lands on Sidling Hill Mountain - a sportman's dream!

ronrichards@mrs.com
Nobody In The World Sells More Real Estate Than ReMAX
• BASED ON INDEPENDENT ARTHUR ANDERSON AUDIT.

Each Office is Independently Owned
717-485-5911
TOLL FREE 888-799-0504
421 LWE McConnellsburg PA
Call Ronald L. Richards, CRS-GRI
ALL OUR LISTINGS ON INTERNET MEMBER MRIS
Serving MD, DC, VA & PA

LANCASTER CO. FARMS FOR SALE

143 ACRE DAIRY - Near the Buck This beautifully contoured farm is ready to go to work for you. Newer bank barn, 80 stanchions with mats, manure pit, 3 stave silos, implement sheds, corn barn and 2 homes make this setup complete. ML#83156.

91.5 ACRES - Near Quarryville. 71 acres of prime tillable soil surround the large pasture and stream. Bank barn with attached pole barn, 22x75 stave silo with newer unloader and feeder. Nice 2 story home, recently remodeled. ML#84840.

Call Tom Kreider for details.

COLDWELL BANKER

HOMESALE SERVICES GROUP
(717) 786-1300 BUS
(717) 786-8311 FAX
(717) 786-4869 RESIDENCE

Tom Kreider, Realtor

PREMIER LANCASTER COUNTY FARM

Back View

Lovely 2800 square foot farmhouse 2 full baths, large family room w/fireplace, 4 bedrooms, hot water heat, dishwasher, excellent condition

86'x45' Bank barn with several buildings attached including a 19'x45' corn barn. Original condition with a good roof. Also includes detached two car garage 24x24, and Tobacco shed/shop 25x48

95 acres M/L mostly open with approximately 90 acres tillable Some "prime" soils Very nice rolling land Priced as follows: Whole Farm **\$650,000.** 40 acres M/L with buildings **\$390,000,** 55 acres open land **\$280,000.** ML 84946, 84948, 84947

Dale H. Stoltzfus
REALTOR
Res. 717/626-9157
Car 717/940-4412
Toll Free 888/636-0372

Kingsway Realty

OFFICE
717/569-8701 717/733-3344
Fax 717/560-9791
1770 Oregon Pike Lancaster, PA 17601

BIRCHWOOD AUTO SALES
717/949-6513

1998 FORD F-150 XLT 2 WD, 4.2 V6, AT AC, PW PL PM Tilt, Cruise, Cass, Alloys, Sharp Truck! Black 39,900 Miles **\$14,500**

1997 DODGE RAM 1500, Excab 318 V8 AT AC PW PL PM Tilt CD, Cruise, Alloys Red 59,000 Miles **\$17,500**

1996 DODGE RAM 3500 EXTENDED CARGO VAN, 318 V8 AT AC, Cruise w/a 4.7 Hydromaster Carpet Steamer Unit, White, 55 000 Miles **\$14,900**

1995 NISSAN XE, Excab, 2WD 3.0 V6 5spd AC PM Tilt, Cruise Cass, Alloys, Black 78 000 Miles **\$7,800**

1995 FORD RANGER XI, Excab 2WD 3.0 V6 5spd AC, Mag, Wheels Alarm Tarp Red 74,000 Miles **\$8,900**

1994 DODGE RAM 2500, 4X4, 360 V8 AT AC Tilt Cruise, Cass, White 63 000 Miles **\$9,900**

1993 FORD F-150 XLT Xcab, 2WD 302 V8, AT AC, PW, PL, PM, Tilt, Cruise, Cass White 25,000 Miles **\$13,900**

1992 FORD F 150, 2WD, 300 6 Cyl AT Cass. Dual Tanks, Local Trade, Blue, 112,000 Miles **\$4,900**

1989 FORD RANGER XLT, 2WD 5spd 2.9 V6, Tilt, Cass, Blue, Local Trade **\$2,900**

1987 ISUZU PUP, 2WD, 2.3 LT AT AC, FM PW, Steering and Brakes Topper 82,000 Miles **\$3,995**

SUV'S

1995 SUZUKI SIDEKICK JLX, 4x4, 4DR AT, AC, PW, PI, Tilt, Cruise, Cass, Alloys, Blue, 67,000 Miles **\$7,900**

1994 FORD BRONCO EDDIE BAUER, 4x4, 351 V8, AT, AC, PW, PI, PM, Tilt, CD, Cruise, Alloys, Green, 100,000 Miles **\$9,900**

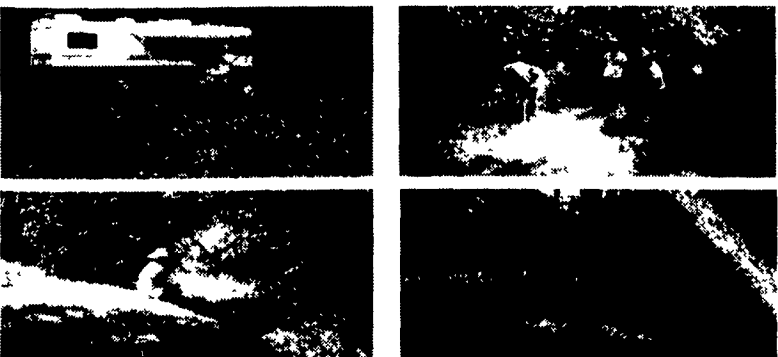
1992 DODGE RAM 250, Conv Van, 318 V8, AT, AC, PW PL, Tilt, Cruise, Cass, Alloys Black, 65,000 Miles **\$8,900**

WE ALSO BUY CLEAN USED TRUCKS, OLD OR NEW, GAS OR DIESEL

(717) 949-6513

Birchwood
Auto & Truck Sales

Schaefferstown, PA



23 Acres North of Ebensburg, Pa., Cambria Co.

1 mile of trout stream, nice road frontage for camp site, good spring water, electric and phone. Lots of deer, turkey and small game, beavers and good fishing.

Asking Price \$29,000

814/674-8756