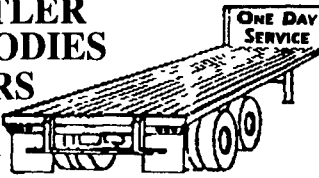


**TRAILER FLOORS INSTALLED
OAK OR APITONG**

**HOSTETLER
TRUCK BODIES
& TRAILERS**

(717) 667-3921



Milroy Exit off Rt. 322
Between Lewistown & State College

'99 Dodge 2500, 8 pass., 318 auto, PS, PB, PW, PDL, cruise, tilt, dual air, AM/FM Cass., dark green, 19,000 mi. w/bal. of factory warranty, \$18,500. 717-733-2873

'99 Dodge 2500 12 pass. van, 318 auto, PS, PB, PW, PDL, cruise, tilt, dual air, AM-FM cass., privacy glass, 23,000 miles w/ balance of factory warranty, dark green, \$18,900. 717-733-2873

L40 Aspen Bucket Truck For Sale (damaged) 717-432-5564

Grain trucks: 1988 Ford L8000 16' grain dump, 31,000 GVW, 7.8L dsl, 6-spd trans; 1988 Ford F800 16' grain dump, 29,900 GVW, 7.8L dsl, 5+2 spd. 703/560-2275.

USED 2-HORSE TRAILER, bumper hitch & goose-neck. Call 410-838-1282.

1994 Chevy Silverado extended cab, K2500, 3/4 ton, 4WD, loaded, 350 auto, HD tow pkg, 2-tone paint, very clean, exc cond. \$11,000 717-367-5430.

90 Mack triaxle dump, 300hp, 8spd, 18+44, 16' alum. body, w/snow plow & spreader, good cond., \$45,000 OBO. 717-359-9423 after 6pm.

Iveco 1985 Z340T 18' van body, tuck away lift gate, 145,000 mi, blown engine, good tires, Best Offer. 717-738-3377.

STOCK GOOSENECK 16x6x6', STOCK BUMPER 16x6x6' 3 HORSE SLANT OPEN STOCK w/ dressing rm & rear tack. Used 2 horse 1986, call for pricing. New & Used trailers available. NETCO Trailer Sales, 410-838-1282.

PRE-OWNED CARS PRE-OWNED TRUCKS PRE-OWNED MPV'S

'95 CHRYSLER New Yorker Sedan Fully Loaded 1 Owner	'98 FORD F150 4x4 XLT Regular Cab V-8 A/OD A/C 30 000 Miles	'97 FORD EXPEDITION Eddie Bauer Pkg. Leather Loaded, 33,000 Miles
'98 DODGE NEON SPORT 2 Dr AT A/C Sunroof 1-Owner 30 000 Miles	'93 CHEVY 1500 4X4 Silverado Pkg. V8 A/C, A/OD 46,000 Miles	'96 JEEP CHEROKEE COUNTRY, 4 Dr, 4x4 29 000 Mi, A/OD, 4 OL 6 Cyl, PB, PS, PW, PDL, Cruise, Tilt, AM/FM Cass, A/C, *Keyless Entry
'95 FORD ESCORT LX Sedan Sport Package A/OD A/C 1-Owner	'95 FORD F150 4X4 Regular Cab XLT, V8, A/OD, A/C 35,000 Miles	'97 FORD EXPLORER SPORT A/OD, 4 OL V-6, Power Equipment Cruise, Tilt
'99 FORD TAURUS SE 4 Door Sedan Power Equipment, Low Miles, 4 to Choose	'96 FORD F250 4x4, XLT, A/C, A/OD, Black Beauty 45 000 miles	'95 CHEVY G-20 Conversion Van, 4-Chairs, Seat Bed, Low Roof & More
'99 FORD ZX-2 A/C, 5-Spd, 1-Owner Black Beauty, 25K Miles	'98 FORD F150 4x4 XLT, A/C V-8, Off-Road Pkg 5 Spd & More	'97 JEEP WRANGLER Sahara A/C 5 Spd, 4 OL 6 Cyl, Only 16,000 Miles
'99 FORD ESCORT SE 4 Dr Sdn, Sport Group Power Equip 19 000 Miles	'98 GMC SIERRA 4X4 Super Cab, V8, Loaded, One Owner, 38,000 Miles	'98 FORD EXPLORER SPT, 2 Dr 4x4, 22,000 Mi, A/OD, 4 OL 6 Cyl, PB, PS, PW, PDL, Cruise, Tilt, AM/FM CD Player/Cass, A/C
'93 CHEVY LUMINA Z-34 Coupe, V6 A/C, A/OD, Power Equipment	'95 CHEVY 2500 4x4 Extended Cab, Diesel, Auto Trans, A/C, Silverado	'90 FORD BRONCO XLT V8, A/OD A/C Power Equipment, Red/White
'98 MERCURY TRACER LS 4 Dr 27,000 mi, A/OD 4 Cyl PB, PS, PW, PDL Cruise, Tilt, AM/FM Cass A/C	'97 FORD RANGER XLT 4x4, S/CAB 35,000 Mi, A/OD 4 OL 6 Cyl, AM/FM Cass, A/C	'99 FORD EXPLORER 2 Dr Sport A/C, 5 Spd, 1 Owner, Only 19,000 Miles

ENGLE-RISSINGER AUTO GROUP

FORD * LINCOLN * MERCURY * JEEP
Midway Between Halifax And Millersburg • 717-896-3421 • 1-800-242-8075
HOURS: Monday-Friday 8:30 AM - 8:30 PM; Saturday 8:30 AM - 3:00 PM

Grain Hauling Equipment



- 2000 International 9900: 500/435 HP Detroit, 52-in sleeper
- 2000 Timpte Super Hopper: 40-ft Aluminum Sub-frame Air Ride
- 1997 Timpte Super Hopper: 40-ft Aluminum Sub-frame Air Ride
- 1998 MAC Dump Trailer: 40/39-ft Aluminum frame, spread axle
- 1995 Freightliner FLD120: 470 HP Detroit Wet-line
- 1984 Ford L1 9000: 300 Cummins brand new cab in 1995

McGuirk Bros.

410-838-4828 (call before 7 00 pm)

1972 Peterbilt

Power Steering
300 Gal Alum Tanks, Hydraulic Hitch 435, 13 Spd Mobile Home Tooter Inspected



\$4,500 Best Offer



1978 Ford
14 Ft U-Haul Trk Alum Box, 430, 4 Spd, Inspected
\$3,500 Best Offer



1979 Ford Bronco 351
4 Spd With Granny Gear, Inspected
\$3,500 Best Offer



1980 Ford Custom Trk.
9 Ft Steel Bed With Class 3 Hitch & Hitch For Gooseneck Trl, 3 Axle Trk With 4 Wheel Drive, Button Tuck Interior, Lincoln Continental Seats, 400 4 Barrel, 4 Spd Power Steering, 33x12 50 15 Tires Inspected, 14,000 GVW

\$6,500 Best Offer
717-627-4978 or 717-627-7358

SAME DAY PARTS DELIVERY

SERVICE WITHIN 50 MILE RADIUS OF BERGEY'S ALLENTOWN DEALERSHIP

Bergey's VOLVO GMC
AUTOMOTIVE EXCELLENCE SINCE 1924

TRUCK CENTERS

Routes 309 & 22, Allentown, PA. 18106
610-395-5808 • Toll Free 1-888-237-4397
Ask for Chris, Adam or Dennis! www.bergeys.com

SALES HRS
M-F 8:30 am- 6 pm Sat 8:30 am-12 noon
SERVICE & PARTS HRS
M-F 7:30 am-11 pm Sat 8:00 am-12 noon

TOLL FREE 1-888-237-4397 • 610-395-5808



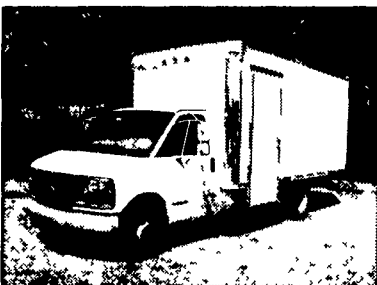
1995 GMC W7 - 18' SUPREME VAN BODY
#6401, W7 Diesel, Automatic Transmission, 25950 GVWR, 18' Supreme Van Body with Liftgate, 141,000 miles **\$19,850**

TOLL FREE 1-888-237-4397 • 610-395-5808



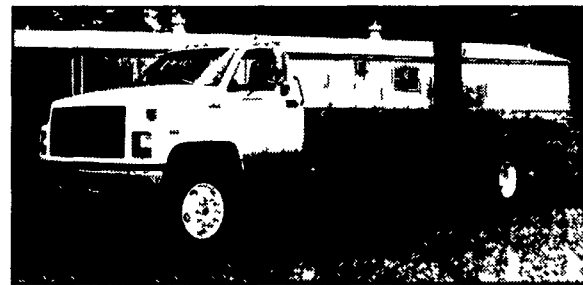
1996 GMC W4500 - 14' MORGAN VAN BODY
#6251, W4500 Diesel, 5-Speed Manual Transmission, 14,000 GVWR, 14' Morgan Van Body with Liftgate, 87,000 Miles **\$17,900**

TOLL FREE 1-888-237-4397 • 610-395-5808



1997 GMC SAVANA CUTAWAY- 15' SUPREME VAN
#6398, 350 Gas Engine, Automatic Transmission, Supreme 15' Van Body with Step-Saver Side Door, 20,000 Miles **\$17,950**

TOLL FREE 1-888-237-4397 • 610-395-5808



1996 GMC C-SERIES CHASSIS
#76158, TCH042, 250HP CAT 3116, FS6305A 5-Speed, Eaton 22065T 2-Spd Rear, Air Brakes, 33,000 lb GVW! **\$26,900**

TOLL FREE 1-888-237-4397 • 610-395-5808



1990 FORD F600 - 18' MORGAN STAKE BODY
#6325, Diesel, 5-Speed Trans and 2-Speed Rear, 24,500 GVWR, 18' Morgan Stake Body with Liftgate, 122 000 Miles **\$12,750**

TOLL FREE 1-888-237-4397 • 610-395-5808



1990 GMC - 16' MORGAN VAN BODY
#6399, Diesel, 5-Speed Manual Transmission, 16' Morgan Van Body with Liftgate, 22,800 GVWR, 83,000 Miles **\$7,950**