

Sale Reports

FERREE ESTATE SALE
A Public Auction of antiques and collectibles was held August 24, 25 and 26 for the estate of Isabel M. Ferree, 473 Maple Shade Road, Kirkwood, Lancaster County, Pa.

Some prices were: early bench top table \$12,000, early bench top table painted white \$2,100, half spindle back deacon's bench with stenciling \$2,800, tall Empire linen press with dove-tailed splash back \$3,600, rope bed painted tiger maple \$2,400, three piece oak bedroom suite \$1,200, oak server with beveled mirror and claw feet \$1,400, walnut chest of drawers \$1,000, early two-door cupboard with splash back \$250, small rope bed with rails (trundle) \$1,000, small hanging cupboard with dove-tail top \$275, dove-tail blanket chest \$350, small oak claw-foot flower stand \$350, six double pressed back oak chairs \$100 each, oak flat front china \$525, Sharpless cream separator \$230, 1939 World's Fair pin \$35, tin monkey on string \$90, tin dime bank \$45, ladies gold Elgin pocket watch \$50, unusual wooden bootjack \$70, stoneware crock \$100, small Silvertone radio \$20, flue covers \$70 to \$75, Halloween decorations \$22.50 to \$40, peanut butter glasses \$7 to \$10 each, one gallon blue decorated crocks \$160 to \$240, daguerreotype tins \$25 to \$230 and tray lots of children's books \$20 to \$90.

Whyte's Auctions managed the sale.

BROWN AND BRANTLEY SALE
Antiques, household goods, collectibles and tools were sold Wednesday at a public auction held for Catherine M. Brown, Elspeth F. Brantley and others at Horst Auction Center, Ephrata.

There were 402 registered bidders.

Among the items sold were a four-piece modern bedroom suite, \$500; a modern cherry bedroom suite, \$160; a small butcher block, \$110; an oak sideboard, \$275; a Lane cedar-lined cupboard, \$190; a modern wicker table, \$150; a Keystone kitchen cabinet, \$120; a McDougal kitchen cabinet, \$160; an oak hall rack, \$130; a dove-tailed cradle, \$110; an oak dresser base, \$130; an open washstand, \$160; a pine washstand, \$150; and a small wood box, \$250.

Also, a set of plank-bottom chairs, \$165; a small pine blanket chest, \$350; a pine low dry sink, \$650; a chest of drawers, \$155; a jelly cupboard, \$100; a softwood dry sink, \$500; an oriental rug, \$300; an antique oriental rug, \$275; a set of covered canisters, \$260; a set of Lenox china, \$375; a working steam engine, \$100; a tray of jewelry, \$195; a slag-glass lamp, \$475; a five-piece stoneware bowl set, \$200; a barrel-shaped bank, \$230; and a beaded pin cushion, \$120.

Also, six peanut butter glasses, \$170; seven canister jars, \$120; a carnival hobnail kerosene lamp, \$170; a Nippon chocolate set, \$130; a camera with parts and case, \$290; a Roseville jardiniere, \$275; a Roseville vase,

\$210; a hard candy tin with pigs, \$130; Halloween lanterns, \$425; a carnival bowl, \$100; a book, \$120; a pink transfer platter, \$425; a tea set, \$115; drapery tie-backs, \$140; a Dynamark riding mower, \$140; and a pump trough, \$160.

The sale was conducted by Horst Auctioneers, Ephrata.

BILGERSALE
A Public Sale of real estate and personal property was held August 30 by Frank Bilger, Troxelville, Pa.

The 19.75 acres with a two-story house, two-car garage and a workshop brought \$162,000.

Other prices were: toy pedal car \$250, Mossberg 410 gun \$120, woodbox \$240, china closet \$150, sideboard \$750, White tractor \$375 and J.D. 1947 B tractor \$1,200.

Hassinger & Courtney were the auctioneers.

TREMENDOUS TWO DAY ABSOLUTE AUCTION

Tues. & Thurs.,
Sept. 19th & 21st
10 AM

Mickey Rooney's Tabas Hotel
US Route 30-Downingtown, PA 19335

250 + Hotel Rooms-
Restaurant Equip.
& Accessories

Fixtures-Outdoor
Furniture-Pianos
(30+) 4' & 6' d. Crystal
Chandeliers & other lighting
300 + Victorian style
cast iron tables

TUESDAY SEPTEMBER 19, 10AM:
Decorative-Pianos-Restaurant Furnishings-Restaurant Equipment-250+ Hotel Rooms-Support Equipment-Much More!!

THURSDAY, SEPT. 21, 10AM: Conference Center, Newly Remodeled Will Be Torn Down

Restaurant Equipment-Capital improvements-crystal chandeliers & sconces - Also: An entire building of used building supplies & hotel accessories; much more!!

Terms & Conditions: Cash, certified funds, MC, VISA, AMEX, MAC; or bank letter of guarantee; 10% buyer's premium; 25% deposit at knock-down. Full payment auction day.

Inspection: Monday September 18, 2000, 10 AM to 3 PM

Removal: Wednesday, September 20, Friday, September 22, Saturday September 23 & Sunday 24, 2000, 10 AM-4 PM

call for brochure

BARRY & SLOBERG INC
AUCTIONEER/APPRaiser

AU-1487-L

(215) 425-7030 Fax (215)425-7039
<http://members.aol.com/bssauction>

PUBLIC AUTO AUCTION

Tuesday, Sept. 12, 2000
at 6 PM

2501 E. Ontario St., Phila., PA 19134

Antiques & Classics: 1931 Ford Model A, 1950 Parkard, 1953 Chevy delivery truck; 1957 Mercury Monclair, 1969 Lincoln-Mark III, 1969 Morris Austin mini.

Motor Cycles & ATV's: 1999 Yamaha Star motor cycle, 1998 Yamaha 4 wheel ATV, 1954 Harley Davidson 45; Autos: 94 Chevy Corsica, (3) 93, 92, 87 Taurus, 92 Ford Aerostar, 92 T-Bird, 92 Continental, 92 Dodge Dynasty, 91 Explorer, (2) 91, 89, 87, 85 Escort, 91, 89, 88 Cougar, 90 Buick LeSabre, 90 LeBaron, 90, 86 Sable, 89 Pontiac Grand Prix, 89, 87, 85 Tempo, 89 New Yorker, 88 Cadillac DeVille, 88 & 80 Olds Cutlass, 87 Chevy Monte Carlo SS, 87 Shadow, 86 Voyager, (2) 1986 Olds Delta 88, 77 Chevy Malibu, Imports: 93 Hyundai Elantra, 88 Audi 5000S, 88 Audi 90, 84 Mercedes 300D, 84 Mercedes 190D, 83 Mercedes 380 Sel, 79 Mercedes 300D, 76 BMW 2002.

Terms: \$300 non-refundable cash deposit required at knockdown. Vehicles selling over \$5,000 will require a \$500 deposit. 10% Buyer's premium, payment in full, cash or certified funds by Wednesday, September 13, at 4 PM. All titles must be transferred on premises before removal. Dealers must provide DIN # with I.D. Instant tags and insurance available. **Inspection:** 3 PM day of sale. *Note: No one under 16 permitted.*

BARRY & SLOBERG INC
AUCTIONEER/APPRaiser

AU-1487-L

2501 E. Ontario St. / Philadelphia, PA 19134
(215) 425-7030 Fax (215)425-7039

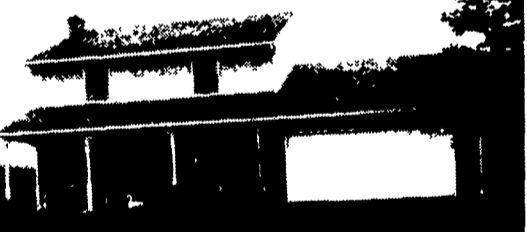
<http://members.aol.com/bssauction>



PUBLIC AUCTION

of
Valuable Real Estate
2-Story Dwelling
w/1.32 Acres Land
Fine Oak Furniture, Antiques,
Collectibles, HH Goods,
Old Quilts, Linens, China,
Glassware, Tools, Rototiller,
Snow Blower

Sat., Sept. 30, 2000 8:30 a.m.



Real Estate: 2 p.m.

2026 Rockvale Rd., Lancaster,
East Lampeter Twp., PA

East of Lanc. on Rt. 462, pass Mellinger Menno Church. Turn right at Turkey Hill on Strasburg Pike. Continue to L.H. Brubaker, turn left on Rockvale Rd. Sale on right.

Real estate consists of 2-Story Brick & Alum. Siding Dwelling w/attached 2-Car Garage situated on 1.32 Acres Land, separate Storage Shed, 2 Brooder Houses. Permanent Shade, LR, Lg. Kitchen/DR Comb. w/Modern Cupboards, Family Room, Foyer, Powder Room, Laundry, 2nd Floor-3 BR, Full Bath. Basement, Cold Cellar, Attic Storage, Electric Baseboard Heat, On-Site Well & Sewer.

Home with over 20,000 tulips • Nice country setting with many possibilities

INSPECTION FOR REAL ESTATE:
Thurs., Sept. 14, 6-8 p.m.; Sat., Sept. 16,
1-3 p.m. or call (717) 687-6857 for appt.

Sale for:

Lloyd H. & L. Virginia Weaver

TERMS: 10% down, balance on or before Nov. 30, 2000

ATTORNEY: James N. Clymer
Clymer & Musser

MILLER & SIEGRIST AUCTIONEERS
(717) 687-6857 AU-1723L

ABSOLUTE AUCTION VALUABLE REAL ESTATE

#1 - 1 1/2 STY. HOUSE &
1 1/2 STY. GARAGE/SHOP
#2 - 3 1/2 ACRES w/BARN &
MOBILE HOME PAD
PERSONAL PROPERTY - ANTIQUES
1951 FORD TRACTOR - GUN
SAT., SEPT. 30, 2000
9 AM - Real Estate 1 PM

LOCATION: From Blue Ball Rt 23 East to Churchtown turn right onto S Churchtown Rd to property on left Caernarvon Twp. Lancaster County



#1 Real Estate consists of 1 1/2 sty frame w/alum siding dwl w/country kitchen, living rm, family rm w/brick fireplace, 1st floor laundry, 2 bdrms & full bath Partial bsmt Oil space heater, on lot well & septic Garage is detached masonry 1 1/2 sty 2-car garage/shop w/water & electric 2nd floor storage All on approx 1/2 acre lot

#2 Real Estate consists of frame barn w/large shop area, garage space & storage area Separate Mobile Home Pad includes on lot well & septic Ideal rental potential or home site all on approx 3 1/2 acres - mostly tillable w/over 530' road frontage

NOTE: Both properties will be sold separately to the highest bidder regardless of price! Unique opportunity to purchase country property w/abundant storage area Terms 10% down, balance 60 days For terms, details, plotting or financing call auctioneers at 717-445-4309 or 717-733-1006 Inspection by appointment or open house on Sats, Sept 9, 16 & 23 from 1-4 PM

Terms By:

MALCOM (JACK) HARSH

Charles W. Hartranft, P.O.A.

Auction conducted by
Randal V Kline, Lloyd Kreider,
Roy Good, Jr., Auctioneers
Lic #2116, #513, #499
717-445-4309



COMPLETE AUCTIONEERING SERVICE

PUBLIC AUCTION MON., SEPT. 11, 2000

3:00 PM

Selling Personal Property, Antiques, & Collectibles
Belonging to Ruby Haines, RR3, Middleburg PA

DIRECTIONS: From Selingsgrove take Rt 204 from Selingsgrove toward New Berlin Just past Kratzerville at the bottom of the hill, turn left on North Hill Drive and proceed approx 2 miles to auction on the right

ANTIQUES & COLLECTIBLES

30" Bed, Chiffonade, & Stand, (painted), Chestnut Drop Leaf Table, Oak Fall Front Desk, 5 Bent Back Chairs (painted white), Square Walnut China Closet, Oak Parlor Stand, Wood Stomper, Butter Bowl & Paddle, Cast Fry Pans, Collector Plates, Collection of Hand Bells, Birds, & Other Small Animals, Collection of Salts & Peppers, Denim Days, Sawbuck Butter Churn, Green Stoneware Pitcher w/Grapes, Decorated White Milk Glass Syrup Pitcher w/Pewter Top, Occupied Japan Indian Creamer, Elephant Creamer, Depression Glass, 30+ Pieces of Ruby Glass, Cruets, Paper Weight, Moon & Stars Compote, Nesting Chickens, W/B Rabbit, Candle Wick, Majolica Shell Dish w/Shell Feet (damaged), Chalk Dog Signed Jerry Colona, Green Jars, Counter Jar, Cross Bottling Works, Bloomsburg, W/B Taylor Soda Bottle, Bloomsburg, M. Speiser Soda Bottle, Danville, Sonneck & Lanten Bach Soda Bottle, Philadelphia, Neidig Dairy Bottle, S K Schlegel Ad Plate, Reading, Amber Mason Jar, Dated Jrs, Table Top Cream Separator, Farm Master Electric Butter Churn, **PLASTIC MODELS:** (2) '57 Chevy's, '67 Fleet Side Truck, '67 Stingray, Hurst Funny Car, '70 Cobra, '67 Corvette, '32 Ford Roadster, '75 Dodge, '68 Camaro SS, '67 Fairlane GT, 3 Foot Plastic Doll, Marx Early Hess Truck, No tractor, Hardy Action Toy, Stage Coach in Original Box, 1914 Porcelain License Plate, Counter Jar, 4 Gal Preserve Crock, New Berlin Cheese Box Cherry Seeder, Egg Scales, Middleswarth Chip Cans, Buttons, Jewelry, Crazy Comfort, Cream Skimmer, Misc Crocks & Jugs, Closed Face Waltham Gold Watch, Highly Engraved, Tin U S Mail Bank, Johane F Stark Hand book, 1857 German Book, Asst of Lamps, Puzzles, Carom Board, Travel Post Cards, Wood Rolling Pin, Mounted Black Squirrel, 5 Very Nice Indian Projectiles, 2 Lanterns, Sad Irons,

COINS

2 Dollar Red Spots, 5 Dollar Silver Certificate, Silver Kennedy, Clad, & Liberty Halves, Lincoln Sets, President Commemorative Coins, Washington Quarter Set, Uncirculated Mint Sets, 1990-98 (missing '92), 1996 Proof Set, 1979&1980 Susan B Anthony Sets, Wheat & Steel Pennies

HOUSEHOLD ITEMS

Refrigerator, Lg Chest Freezer, 5 Ft Chest Freezer, Stacking Washer & Dryer by Kenmore, Oak Dnette & 4 Maple Chairs, 2 Bent Back Children's Chairs, Sofa & Chair, Single Bed, Elec Hospital Bed, Knee-hole Desk, Floor Model TV, Modern Mantle Clock, Recliner, RCA Color Truck w/Remote in Entertainment Center, Chest of Drawers, Wooden Bench, End Tables, Modern Dry Sink, 2 Elec Sewing Machines, One Portable, Sweeper w/Power Nozzle, 2 Folding Tables, Wood Folding Chair, 2 Dehumidifiers, one like new, Roasters, Scrapple Pans, Fan, Step Stool, Misc Hand Tools, Bedding & Towels, Canning Jars, Christmas Decorations, Miter Saw, Metal Shelves, Step Ladder

KENNETH E. HASSINGER
RR 02, Box 985
McClure, PA 17841
(570) 658-3536
AU-001532-L

NEIL A. COURTNEY
R.D. #1 Box 239
Richfield, PA 17086
(570) 539-8791
AU-002651-L

AN ON-SITE AUCTION OF RESTAURANT/DELI EQUIPMENT

IN
MERCERSBURG • PENNSYLVANIA
MON., SEPT. 18, 2000 • 5 PM

• For A Free Detailed Auction Flier Please
Contact Cochran Auctioneers at (301) 739-0538
-PA AU003314 -

JAMES G COCHRAN
CEO/Auctioneer

THOMAS E BIKLE
Director of Marketing



Cochran
AUCTIONEERS & ASSOCIATES LTD.

PROFESSIONAL AUCTIONEERS & APPRAISERS SINCE 1972
7704 Mapleville Rd., P.O. Box 222, Boonsboro, MD 21713-0222
(301) 739-0538 • TOLL FREE (MD) 1-800-310-2844 • FAX (301) 432-2844
PA Lic. #AS000832-L

NATIONALLY RECOGNIZED AWARD WINNING AUCTIONEERS SINCE 1972