

**Phila. Fruit**

PHILADELPHIA Terminal  
Prices as of 6 Sept. 2000  
Report Supplied By USDA

**CITRUS FRUITS -GRAPEFRUIT:** MARKET ABOUT STEADY ctns CA Shprs 1st Grade Ruby Red 27s few 14.00-15.00 32s few 16.00 Shprs Choice Ruby Red 23s few 10.00-11.00 27s few 10.00-11.00 4% buctns FL U.S. One Interior Red 36s 12.00 40s 12.00 -LEMONS: MARKET ABOUT STEADY ctns CA Shprs Choice 95s 16.50-17.50 115s 16.50-17.50 140s 16.50-19.00 165s 17.50-19.50 200s 21.00 10 kg cntrs SP 140s fr appear 12.00 160s fr appear 10.00 180s fr appear 8.00 -LIMES: MARKET ABOUT STEADY 10 lb ctns MX 42s 5.00 48s 4.00-6.00 mostly 5.00 54s 4.00-6.00 mostly 5.00 fr cond 3.00 40 lb ctns MX 150s 12.50-13.00 175s 12.00 200s 10.00 -MISC CITRUS: NO SALES REPORTED -ORANGES: MARKET ABOUT STEADY ctns CA Shprs 1st Grade Valencia 56s 11.00-13.00 72s 10.50-12.50 88s 10.00-11.00 113s 9.00-10.50 Shprs Choice Valencia 56s 9.00

72s 9.00 88s 9.00 113s 9.00 4% buctns FL Valencia 64s 11.00 some 12.00 80s 11.00 some 12.00 100s 11.00 some 12.00 -TANGELOS: OFFERINGS INSUFFICIENT TO QUOTE -TANGERINES: OFFERINGS NONE -TEMPLES: OFFERINGS NONE  
**BERRIES -BLUEBERRIES:** MARKET ABOUT STEADY fts 12 1-pt cups with lids CD lge 16.00-18.00 fr cond 5.00-7.00 MI med-lge 18.00 -CRANBERRIES: OFFERINGS NONE -MISC BERRIES: OFFERINGS LIGHT fts 12 5.6-oz cups with lids CA Blackberries few 21.00-24.00 -RASPBERRIES: OFFERINGS LIGHT fts 12 6-oz cups with lids CA 16.00-18.00 one label 22.00 -STRAWBERRIES: MARKET HIGHER fts 12 1-pt bkts CA med-lge 9.00-11.00 preferred labels 13.00-15.00  
**MELONS -CANTALOUPS:** MARKET SLIGHTLY HIGHER 1/2 ctns/crts CA 9s 9.00-10.00 12s 11.00 few 13.00 15s 8.00-10.00 mostly 10.00 few 12.00 24 inch bins PA per bin 140 count 120.00-130.00 -HONEYDEWS:

MARKET SLIGHTLY LOWER 3/4 ctns CA 4s 7.00-7.50 mostly 7.00 5s 6.50-7.50 6s 6.50-7.50 fr cond 4.00 8s 6.50-7.50 TX 4s fr appear 5.00-6.00 5s fr appear 5.00-6.00 -MISC MELONS: 3/4 ctns CA Casaba 4s few 5.00-6.00 5s few 5.00-6.00 -WATERMELONS: ctns per ctn MD Red Seedless 4s 18.00 bins MD Red Seedless per bin 85 count 200.00  
**NON-CITRUS FRUITS -APPLES:** MARKET ABOUT STEADY ctns trypk CA U.S. ExFcy Granny Smith 88s one label 38.00 100s one label 32.00 125s one label 22.00 Royal Gala 88s 22.00 100s 20.00 113s 16.00 NZ cat I Fuji 90s 35.00 Braeburns 90s 22.00 ctns celpk NY U.S. ExFcy Paula Red 100s 10.00 140s 10.00 CONTROLLED ATMOSPHERE STORAGE ctns trypk NY U.S. ExFcy Red Delicious 88s 15.00 U.S. One McIntosh 138s 10.00 WA WAExFcy Red Delicious 72s 13.00-15.00 one label 20.00 80s 13.00-15.00 one label 20.00 88s 13.00-15.00 one label 20.00 100s 15.00 113s 13.00-15.00 125s 15.00 Golden Delicious 88s 22.00 100s 20.00 Granny Smith 100s 29.00 113s 25.50 ctns celpk NY U.S. ExFcy McIntosh 120s 16.00 Paula Red 100s 20.00 U.S. Fcy McIntosh 100s 13.00 120s 13.00 140s 12.00 U.S. One McIntosh 80s 10.00 100s 12.00 120s 9.00 140s 9.00 Empire 100s 11.00 140s 10.00 WA WAExFcy Golden Delicious 80s one label 31.00 96s one label 28.00 ctns 12 3-lb flmbgs NY U.S. ExFcy Red Delicious 2 1/2" min 11.00 -AVOCADOS: MARKET LOWER ctns 2 lyr CA Hass 48s 42.00-44.00 CL Hass 50s 35.00-37.00

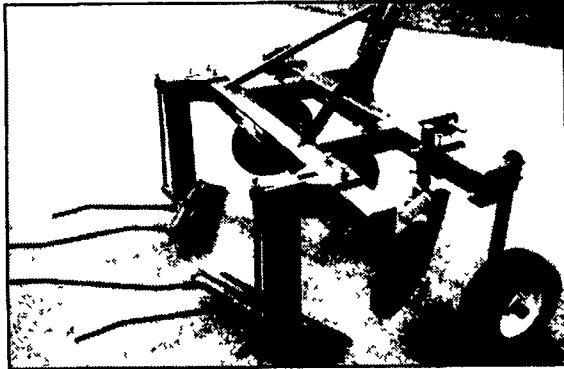
ctns 1 lyr FL Various Greenskin Varieties 6s 7.00 -BANANAS: MARKET STEADY 40 lb ctns IMPORT 10.00 fair qual 8.50-9.00 sml 7.50 petite 13.00 40 lb ctns bagged IMPORT 10.00 -CHERRIES: TOO FEW SALES TO QUOTE -FRUITS OTHER: 10 lb ctns FL Carambola - Star Fruit 20s 12.00 25s 12.00 30s 12.00 2 kg (4.4 lb) IS Lychee Nuts 8.00-10.00 -GRAPES: MARKET ABOUT STEADY 21 lb lugs CA Thompson Seedless lge 20.00 Flame Seedless lge 20.00 Ribiers lge 18.00 Red Globe lge 20.00 19 lb lugs bgd CA Thompson Seedless lge 18.00 med-lge 15.00-16.00 fr cond 5.00-7.00 med 12.00-14.00 sml 8.00-9.00 Flame Seedless lge 18.00-20.00 med 12.00-14.00 mostly 13.00 sml 10.00-11.00 Ribiers med 11.00-12.00 Black Seedless med 13.00-14.00 Italia lge fr cond 9.00-10.00 Red Globe lge 16.00 fr appear 12.00-13.00 med-lge fr appear 10.00-11.00 -KIWIFRUIT: MARKET ABOUT STEADY fts 1 lyr NZ 56s 11.00 ctns 22 lb lse CL 30 sz 13.00-14.00 10 kg cntrs NZ 108s 19.00-20.00 -MANGOES: MARKET LOWER ctns 1 lyr BR Tommy Atkins 9s 9.00 10s 9.00 -NECTARINES: MARKET ABOUT STEADY ctns 1 lyr trypk CA California Well Matured Various White Flesh Varieties 25s 15.00 25 lb ctns lse CA California Well Matured Various Yellow Flesh Varieties 64 sz 18.00 1/2 buctns lse NJ Red Gold 2 1/2" up fr cond 10.00-12.00 U.S. One Various Yellow Flesh Varieties 2 3/4" up few 21.00 2 3/4" min few 19.00 -PAPAYA: MARKET ABOUT STEADY 10 lb ctns BZ 8s 8.00-9.00 9s few 9.00-10.00 10s few 9.00-10.00 -PEACHES: MARKET NJ VARIOUS YELLOW NO GRADE MARK

LOWER, OTHERS ABOUT STEADY ctns 2 lyr trypk CA California Well Matured Ryan Sun 40s 12.00-13.00 42s 12.00-13.00 1/2 buctns NJ U.S. ExOne Various Yellow Flesh Varieties 3" up few 18.50-19.00 2 3/4" min few 18.50-19.00 2 1/2" min few 16.50-17.00 No Grade Marks Various Yellow Flesh Varieties 3" up 15.00-16.00 2 3/4" up 14.00-16.00 mostly 15.00 fr cond 10.00 2 1/2" up 13.00-14.00 fr cond 8.00-10.00 25 lb ctns CA California Well Matured O'Henry 40 sz few 18.00 Ryan Sun 48 sz 13.00-14.00 50 sz 13.00-14.00 -PEARS: MARKET ABOUT STEADY 40 lb ctns AG BOAT Packham Triumph 70s 8.00 80s 8.00 90s 8.00 100s 8.00 110s 8.00 NEW CROP buctns CA U.S. One Bartlett 100s (44lb) 18.00 110s (44lb) 16.00 36 lb ctns CA U.S. One Bartlett 90s 17.00 100s 17.00 110s 13.00 -PERSIMMONS: OFFERINGS NONE -PINEAPPLES: MARKET ABOUT STEADY ctns 1 lyr HI AIR 6s 12.50-12.75 ctns 2 lyr CR 12s 14.00 14s 14.00 HD 10s 14.00-15.00 12s 14.00-15.00 14s 14.00-15.00

**New Jersey Fruit**

BRIDGETON Shipping Point  
Prices as of 6 Sept., 2000  
Report Supplied By USDA  
NON-CITRUS FRUITS 2000 Season  
-PEACHES: DEMAND GOOD MARKET STEADY Various Yellow Flesh Varieties mostly Encore, Autumnnglo and Rio-Oso-Gem wide range in prices according to quality and color 1/2 buctns 2-3/4" up 12.00-14.00 few 11.00 preferred labels 15.00-16.00 2 1/2-2 3/4" 10.00-12.00 preferred labels 13.00-14.00 2 1/4-2 1/2" 8.00-10.00 preferred labels 11.00-12.00.

**Mulch Removing Time**



Model 1800 Plastic Mulch Lifter

**COMPARE THESE FEATURES:**

- 4" x 4" tubular frame
- Adjustable lifting bars
- Three heavy cutting disks
- Choice of 5/8" shear bolt or auto reset
- Adjustable depth wheels
- Will adjust from 3' to 5' plastic mulch
- Two-year warranty



**RAIN-FLO IRRIGATION**

Mfg. By  
884 Center Church Rd  
East Earl, PA 17519  
Phone (717) 445-6976

**Leola Produce Auction**  
will have a special  
**Annual Fall Ornamental Craft Sale**

**Wednesday, September 27, 2000**  
9:00 A.M.

**Featuring Items Such As:**

- Pumpkin Creations
- Corn Dolls
- Corn Brooms
- Corn Stalk Brooms
- Dried Flowers
- Dressed Geese Gourds
- No Woodcrafts Please

**Notice: There Will Be No Produce Or Bulk Loads of Pumpkins, Indian Corn or Gourds Sold At This Sale**

**Leola Produce Auction, Inc.**



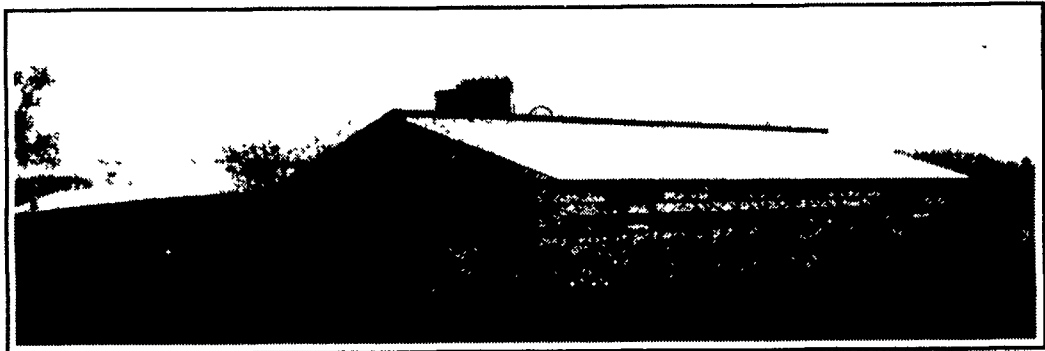
Wholesale Auction of Lancaster Co Vegetables  
Brethren Church Road  
Leola, PA 17540

Office 717-656-9592  
Fax 717-656-8346

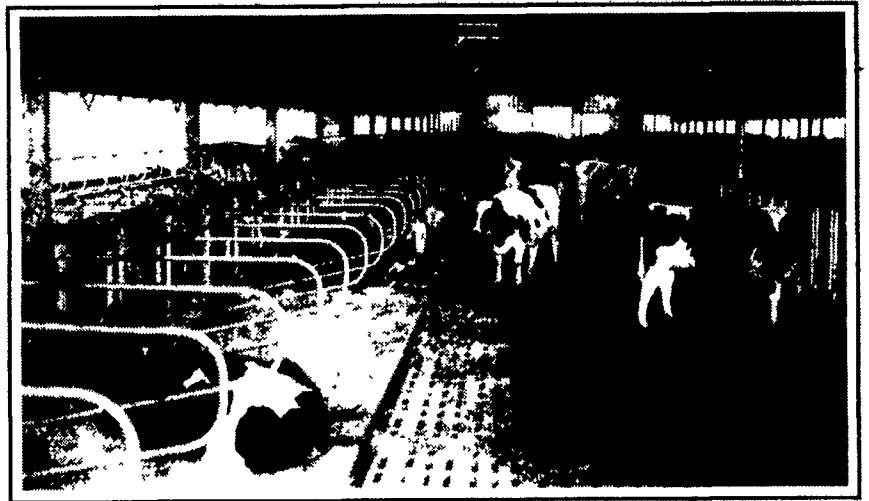
Lic. #AH000028-L



477 East Farnsworthville Rd.  
New Holland, PA 17557  
(717) 355-2361



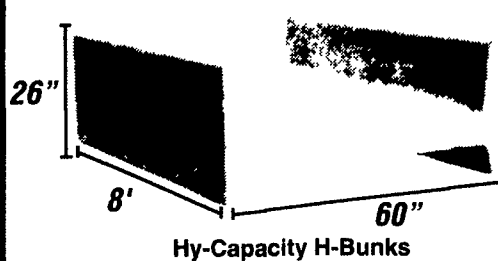
**Concrete Slatted Free Stall Barn**



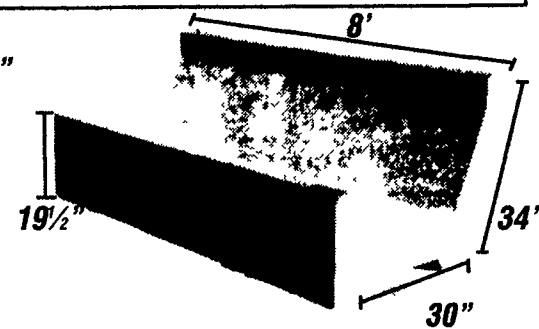
**Long Core Cattle Waffle Slats**



Precast Concrete T-Wall Bunker Silos or commodity buildings built to suit your needs. Bunkers available in 8 Ft. or 12 Ft. High



Hy-Capacity H-Bunks



Slant Back J-Bunks

End Sections Available For Feed Bunks

Give us a call for more information on hog, beef, dairy and heifer barns.