

**DAILY MARKET FOR SALE**

Ford 9N, exc. mechanical cond, tires & paint, \$2,100, Sauder front blade, MO, York Co., 717-292-1303

1947 Mercury sdn, running cond., new headliner & door panels, solid car, lots of orig accessories, \$4,800, Bucks Co., 215-257-4391

Field Queen SP chopper, 3rn, 2rw corn heads, ac 8070 tractor, \$8,000, NH 499 hydro swing haybine, \$3,500, Bucks Co., 215-536-3296

1965 GMC 8500 dump tk., 10' bed, V6 eng., 5 & 2 spd., rear (bad rear), BO, Berks Co., 610-488-1981

15 disc Ontario grain drill, McCurdy gravity bin wagons, front wts. & bracket for IH 856, 4 & 6" grain augers, elec. 5HP motor, Lanc Co., 717-653-4748

16' landscape trailer, 5000 lb., \$800 OBO, 2 bottom int trailer, trip plow, Woods mower parts, ACWC rear, free, Bucks Co., 215-679-6813

Datsun 300ZX, 2S, 1984, 92k, new paint, \$3,800, body A+, no rust, white ext., tan int., new trans., WA Co., MD, 301-416-2340

AKC Pomeranian male, red sable champion blood lines, 7 months old, \$250, Lanc. Co., 717-738-2985

Slate 8x18, good cond., \$50, 8-8'30 a.m., Lanc Co., 717-442-9781

Brillion cultipacker 13', \$975, Chortime C2 feeder lines, 290' long, \$1,450, 10 Shenandoah radiant gas brooders, \$140, Leb Co., 717-867-4575

4 work horses, hay equip., 2 wagons, plow disc, harrow harnesses, dairy equip., 97 Loop Rd., Quarryville, PA 17566, Lanc Co.

Dalmation pups, ready now, cute & friendly, \$150, 2 yrs neutered male, friendly, AKC Bichon male, 1 yr., \$225, Lanc Co., 717-786-0166

Mennonite cab spring wagon, fiberglass, v.g. cond., \$2,500 OBO, Franklin Co., 717-532-9234

Particle bd., 30 pcs 5/8x113/4 + 8' 99 pcs 3/4x13"x42", 97 pcs 67/8"x12", 3/4" for shelving, \$125 OBO, No Sunday calls, Lanc Co., 717-354-7687

Used majestic kitchen range, working cond., John L. Miller, 160 Center Sq Rd., Leola, PA 17540, Lanc. Co.

D 282 diesel for 560 tractor, completely rebuilt, gas cook & bake oven, good for basement or cabin, \$50, Jacob Fisher, PO Box 26 Bart, PA 17503, Lanc Co

1981 Buick 4dr Century, no eng., ok trans., Chester Co., 610-933-4143

3M, \$750, 3F/J, \$550, 21/2 assoc., \$1,250, 1HP TT & Titan \$1,350/1,750, f/m Eclipse #1, \$1,050, 41/2 Stover T, \$1,850, domestics 11/2-5, \$2,800-4,500, call 11 a.m.-4 p.m., Ocean, NJ, 732-367-7546

Hesston PT10 haybine, good cond., 1950 Massey Harris pony w/implements, new tires, runs good, \$2,800, call eves., Monmouth Co., 732-591-8627

4x5 round bales oat straw, \$10 each, will load, you haul, wanted used wood mizer sawmill, Sch Co., 570-943-7630

Alfalfa mixed 3rd cutting, balage, \$40/bale, Lanc Co., 717-656-6424

4x4 NI round baler, 3 round corn crib, Union Co., 570-966-9307

1974 NH combine, 13' grain head, 4rw or 5rn corn head, straw chopper, recent overhaul, diesel, \$5,200, Col Co., 570-752-2106

Farmall M on steel, good cond., has pulley, late model, \$1,800, will deliver, Harrington, Del., 302-398-4243

JD bicycle, 5 spd., sold by Shotesberger's of Elm, needs to be restored, MO, Leb Co., 717-279-7973

Panel saw, \$550, rotary phase converter, \$250, 5 Mitsubishi cell phones in boxes, \$150, York Co., 717-246-2376

JD 530 factory square wide front, 3 pt power steering, fenders, JD 420 narrow front, Cambria Co., 814-948-5549 or 9610

David Bradleys & parts, some equip., IH lowboy, snowplow, AC C tractor, runs, \$650, AC parts, Bedford Co., 814-784-3721

JD 650, 60" deck, 3 pt hitch, 1175 hrs, exc cond., \$7,800, Bolens compact diesel, hydro, 430 hrs, deck, \$4,850, Carbon Co., 610-377-8676

New sheet metal for Oliver 70 standard tractor, inner fenders, floor bds., Oliver Hart-Parr 70 battery boxes, Susq Co., 570-833-5406

Lab pups, yellow AKC reg champ blood lines, 1st shots & wormed, Harford Co., MD, 410-357-8366

Antique 2 hole corn sheller, good cond., brand new welding rod dryer boxes, Micro Fiche viewing machine, new in box, Sch Co., 570-467-3921

1970 to 1979 Ford 4x4 parts plus good body parts, complete or parts, best reasonable offers, mechanical parts, Sch Co., 570-345-2126

Boer goats, starter herd, young does & bred does, percentages & fullbloods, show quality breeding stock, reasonable prices, Adams Co., 717-624-1533

NH 489 haybine, 4020 duals, NI 244 manure spreader, gravity wagon, combine duals, Northumberland Co., 570-275-4232

Reg Highland bull, red, 1 yr old, good bloodlines, quiet temperament, \$600, NI 323 IR corn picker, \$500, works, Northampton Co., 610-588-0024

JD 2 row narrow corn head, \$600, model 912 Deutz diesel, 3 cyl eng, good cond., \$1,200, Lanc Co., 717-336-1335

AKC Siberian Husky, female, 4 1/2 yrs old, nice markings, blue eyes, BO, just south of New Holland, Lanc Co., 717-768-8586

JD 20 pedal tractor, restored, will also restore your pedal tractor or car, Lanc Co., 717-665-4872

NI 324 corn picker, 2 rw, v.g. cond., 1976 Chevy C60 dump truck, 5 spd., 2 spd., rear, Adams Co., 717-359-5068

Sunshine cookstove wood/coal, \$495, working platform scales, \$175, power jigsaw, \$50, bench saw, 8", \$30, Chester Co., 610-274-8706

63 ac farm, all open, 1/2 \$340,000, total farm \$635,000, 1 mile south of Pratts, VA on 231, Madison Co., 804-263-5830

Trailer loading gravity conveyors, extend 52', 1000 lb dial scale, \$750, 3 ph motors, 2" I-beams, elec boxes, p/u as is, Northumberland Co., 570-286-5306

Southdown ram yearling, healthy, workable ram, gentle, cannot use his bloodline w/my ewes, \$25, Lanc Co., 717-284-5249

1988 Chevy 3500 p/u, 74,000 mi., 350 4 spd., PA inspect., set-up for towing, \$4,200 offer, York Co., 717-993-3775

Thoroughbred Stallion, 4 yrs old, proven stud, good confirmation, \$875, Lanc Co., 717-733-1285

Wisc eng., VG4D elec start w/clutch pulley, \$550, trash pump w/Wisc eng., 3", \$600, Dauphin Co., 717-652-1957

Toy Fox Terrier pups, will stay small, ready by mid Sept, make good pets, Lanc. Co., 717-336-5209

1951 Ford p/u, duals, runs good, flat head V8, \$2,000, 10-20 McDeering tractor for parts, \$400, Howard, MD, 410-489-9109

Horse trailer 2 & 3 horse, utility trailer, mini donkey saddle & tack, Berks Co., 610-582-7289 or 4434

Allis Chalmers 912 garden tractor, 6 spd., 42" mower push blade wheel wts., tire chains, manuals, good cond., Adams Co., 717-624-4262

JD 440 track loader, diesel, \$4,600 Cat 977k loader, exc cond., \$15,800, Miller 44D Trail Blazer welder, \$4,800, Farmall M-mint, \$2,400, Mont Co 215-822-1856

9' Kelly Ryan AG bagger, also have 1500 gal milk tank, York Co., 717-637-8131

900 Case w/belt pulley, JD PTO corn binder, Papec silo filler, timothy hay, oats & oats straw, bale or ton, Perry Co., 717-438-3737

Purebred Brahman young cattle 10 7770 to 4 7770 bulls & heifer, Huntingdon Co., 814-643-2489

Sheppard 3 cyl generator, JD50 PS LPTO 2 bottom plow, 1948 Oliver 88, \$1,600, 1948 JD A, \$1,600, Farmall H, \$900, Monroe Co., 610-381-2586

1999 Dodge ram 1500 sport p/u 4x4, auto, short bed, black, loaded, 6k mi., factory warranty until 2/02, BO, Berks Co., 610-488-1476

IH 504 NF, needs work, \$1,000, metal wheel hay rake, 2 bottom plow w/metal wheels, Dauphin Co., 717-362-4233

Barbados lambs, young ferrets, silver pheasants, Paradise shelducks, Egyptian geese, parlor tumbler & trumpeter pigeons, wire muskrat stretchers, Lanc Co., 717-733-2425

1650 Oliver blown head gasket, runs over under trans., good rubber, BO, leave message, Lanc Co., 717-484-2051

1998 Polaris 500 snowmobile, equipped w/many extras, reverse, plastic, skis, extra windshield & skis, asking \$3,250, Snyder Co., 570-658-7053

IH 7' sickle bar mower, rear mount for Super A, asking \$200 OBO, leave message, Cumb Co., 717-423-5985

JD 450B crawler loader, turbo diesel, new sprockets, idlers, p&b, clutch, starter, paint & decals, good cond., \$12,500, Union Co., 570-568-0546

Satoh diesel tractor, 4 whl drive loader, 3pt hitch, live PTO, exc cond., 540 hrs., 22HP, dif lock rops, Balt Co., 410-239-7495

NH 717 forage harvester, good shape, single row corn head, \$850, 814-667-3487

JD 300 corn picker w/243 row, low profile corn head, v.g. cond., \$4,900 firm, Bedford Co., 814-766-3591

Schipperke pups, reg., some not reg., German Shepherd pups & adults, cond., Adams Co., Honey Brook, 610-273-2406

Patz bale chopper w/blower, w/w/o 71/2HP elect motor, Uebler 812 feed cart, used 2 yrs, both exc., Lanc Co., 717-367-4626

Oak, walnut, western cedar, various widths & lengths, 3" slabs, various lengths & widths, hay, Chester Co., 717-529-2309

Small grain rye seed, combine run, \$4/bu., call eves Nottingham, Chester Co 610-932-5631

Trailer frame, utility, 8'x4', \$75, boat trailer frame, 8' 7"x49", \$75, steel 180 degree dump garden cart, \$75, Burlington Co., NJ, 609-714-1660

1996 Int dump truck, 10HA Eagerbeaver trailer, Bobcat 331 mini excavator, 7753 Bobcat skid loader, exc cond., business opportunities, Lanc Co 717-629-5538

30 ton ear corn at farm, will load, Oliver G1355, 145HP, nice, Oliver 548, 6x auto reset plow, Berks Co., 610-683-7097

Wisc VG4D eng 1700 hrs, exc cond., \$855, 18 4-38 tractor tires, good cond., \$400 for 4 wheels, 235 Summit Hill Rd., Quarryville, PA 17566, call Mon morning 7 30-8 a.m. only, Lanc Co., 717-786-8093

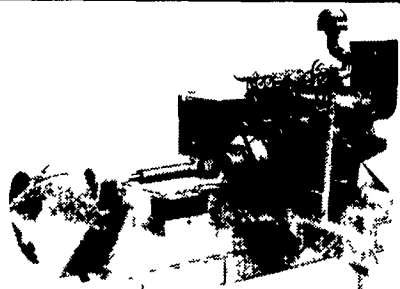
Int 2400A tractor, loader, 3 pt, rops canopy, rear hyd 1400 hrs, PTO, \$6,500 call weekends, late eves Cumb Co., 717-776-5011

New 10x12 mini barn, \$1,300, Berks Co., 610-683-7902

Int loader for H or M, \$300 1987 Chevy, 1 ton, H-speed, \$1,200, 1985 Rankin 24' boat, motor, trailer, \$1,500 Bucks Co 215-679-3406

NH 770 forage harvester w/2 row wide corn head, exc cond., 2 13 6x28 tractor tires, no brakes, 30% tread, Northumberland Co., 0-286-1260

**SUMMIT HILL FLAIL CHOPPER**



1, 2, 3 & 4 Row Models/Heavy Duty PTO or Engine Driven Chain or Clevis-Type Hangers Hydraulic or Hand Cranks 3 Row Model Shown

Used 2 Row w/Wisconsin 65hp Engine, Call for Price  
Used 1000 RPM, 3 Row  
Used 540 PTO, 2 Row  
Used 3 Row, No Engine or PTO

Manufactured by...Joel King  
105 Rohrsers Mill Road, Ronks, PA 17572  
**717-687-0186 8 AM - 8:15 AM**  
3 Mi. East of Strasburg, 1000 Ft. S of Rt. 741

**WANTED:**

Butcher Blocks, and primitive blanket chests w/drawers in bottom.

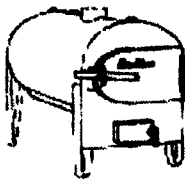
ALSO: Reverse painted table lamps.

Call Mac  
**717/872-7200**

**Aqua-Therm**

**Outside Wood Burning Furnace**

- Clean
- Safe
- Easy
- Efficient



Buy the top of the line!

- \*Stainless Steel Fire Box
- \*Ash Removal Auger
- \*15 Year Warranty
- \*Thermostatically Controlled

Heat your house, shop and/or hot water with one unit

For more information,

call 717-838-9270 or 1-888-382-8170

Email: mcpowell@paonline.com

**Custom Work**

Silage Bagger With Cutter & Roller Mill Attachment

**Amos S. Fisher**

96A Quarry Rd., Paradise, PA 17562

**717-687-9701**

**JAY ZEIGLER Standing Seam Metal Contractor**

Since 1963 "Simply The Very Best Roof Available"

**FREE Estimates**

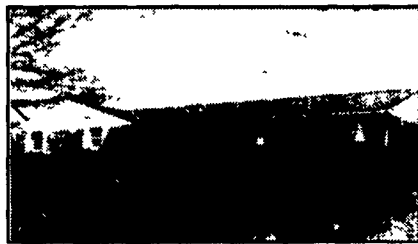
**Call For Information**



Use on Barns Or Garages



Light Commercial.



Reroof w/Metal

**ADVANTAGES:**

- Roof can last for 100 years - cost efficient
- Can be installed over existing roof (Asphalt, roll roofing, wood shingles)
- Is environmentally safe
- Beauty - colorful (galvanized, 40 lb. terne, terne-coated stainless, and painted steel in over 20 different colors.)
- Can be installed on flat roof with as little as 1/2" pitch per foot.
- Good for homes, farm buildings, garages, commercial buildings.
- Sheet in continuous length installed with concealed fasteners with double lock seam for water tight application.

PO Box 231 Rehersburg, PA 19550

**(717) 933-4666 (717) 933-5305 FAX/PHONE**

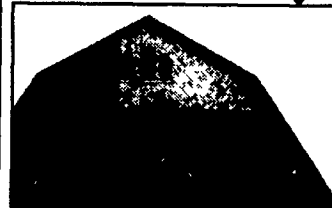


New Construction

**FARM BUILDINGS NEED PAINTING?**

Let Gahring Make Those Buildings **SHINE**

"The Farm Painting Specialist"



**We Are The Fussy Ones**

"NO JOB WE CAN'T HANDLE"

We Have The Equipment To Do Your Job

**COATINGS FOR:**

- Roofs • Wood, Steel and Masonry Structures

OUR SPECIALTIES ARE

- AGRICULTURE - COMMERCIAL - INDUSTRIAL - CHURCHES
- Barn Painting • Milk House • Roof Coating
- Water Proofing Silos • Stucco Farmhouses

The Job Must Be Done To Your Satisfaction

For FREE Estimate CALL

**Gahring's**

PAINTING & WATERPROOFING  
636 East End Ave., Lancaster, PA  
**717-397-4187**