

## BEDFORD COUNTY

Bedford County - 10 Acre Wooded Parcel Adjoining State Forest, Exc. Hunting, Road Frontage  
**\$15,900**

**RE/MAX** Results Realty Group  
Logan Centre 1001 Logan Blvd  
Altoona PA 16602



814-946-9355  
Wes Appleyard  
814-934-3142

## LANCASTER COUNTY FARMS

★ A good farm for the horse lover with Amish neighbors, 54 acres 37 acres tillable, 2-1/2 story brick dwelling, frame bank barn with loose housing, shop, location in Mount Joy Twp **Asking \$338,000.**

★ 133 acre general farm, 88 acres tillable in high state of cultivation, 21 acres pasture with beautiful pond, 58'x100' bank barn with stone gable ends, 20'x113' frame implement shed, 44'x324' high rise pullet house, 65,000 bird capacity with good income, beautiful 2-1/2 story 4 bedroom dwelling, concrete block building converted into beautiful office in Mount Joy Twp **Asking \$875,000.**

★ 78 acre farm, 70 acres tillable, 6 acres in borough of Mount Joy Zoned Traditional Neighborhood District 40'x109' frame bank barn, 26'x106' frame tobacco shed, 2-1/2 story brick dwelling with attached 1-car garage, in East Donegal Twp, public sewer and water to the dwelling **Asking \$775,600.**

★ 2-1/2 story brick 3-bedroom dwelling in Rapho Twp on 0.48 acre lot in Rapho Tap **Asking \$84,900.**



Gene Kreider  
Realtor  
717-898-2345



**HOMESALE SERVICES GROUP**  
1255 S Market St  
Elizabethtown, PA 17022  
717-361-HOME 717-665-HOME  
717-367-1112 (Fax)  
1-800-850-1069 (PA Only)  
717-367-3500 or 717-653-6600

145 acre farm overlooking Seneca Lake. Dairy barn includes: 58 ventilated tie stalls, large dry cow/heifer area, indoor feed rooms with 4 silos, enclosed gutter cleaner/spreader chute, modern milkhouse with 1500 gallon bulk tank and glass pipeline, overhead hay/straw storage. Separate 32' x 48' bull/heifer barn, 40' x 80' equipment barn, small tool barn, 2 grain bins. Soil well drained, slightly sloping - good for alfalfa, corn, soybeans and wheat. Spacious remodeled home with 2 baths, 5 bedrooms is close to area churches, schools and shopping. Seller is willing to carry mortgage after favorable credit check and suitable downpayment. Feed and milking herd sells separately.

Dave Christiansen 315-536-6345

**RECREATIONAL CABIN:** 5 acres of woodland with furnished 14x30 cabin. Insulated with electric Covered porch. **\$24,900. #3965**

**WANETA LAKE:** Totally updated year round lake home across from Sylvan beach. Vinyl siding, new septic, well and electric Move-in condition **\$39,900. #3963**

**FARM OR RECREATIONAL:** 60+/- acres, all tillable with four sturdy outbuildings including 75 cow barn More acreage available **\$80,000. #3962**

**312+/- ACRES:** 110+/- wooded, 80+/- pasture, 120+/- tillable Large barns, machine shop, shed, silos 2 story home in excellent condition **\$295,000. #3951**

**CASH CROP FARM:** Over 400 acres for your working pleasure 250 acres tillable, balance woodland and pasture Space for machinery 5+/- acre pond **\$240,000. #3949**

**DOUBLE MOBILES:** One 2 bdrm, one 3 bdrm, on 8.5+/- wooded acres 100 amp electric and 2 outbuildings **\$32,500. #3948**

**GOODHUE LAKE:** 900+/- square foot year round home with rowboat and paddleboat 15 stories with 2 bdrms Roof is 3 yrs old Nice shade trees and beautiful view of lake **\$48,900. #3941**

**COUNTRY LOCATION:** 1994 manufactured home 3 bdrm, 2 bath on 5 acres Beautiful view of countryside Home includes family room, oak kitchen cabinets, formal living room New 28x32 barn and detached garage **\$97,500. #3938**

**DUNDEE:** 2 parcels One is 83+/- acres all tillable Second is 67+/- ac half tillable **#3954**

**MOUNTAIN RETREAT:** 95 ac forest borders Canisteo River in Steuben County Includes rustic cabin **\$69,900. #3969**

**COMMERCIAL PROPERTY:** 9660 sq ft on 45x75 lot 2 stories plus lower level Busy village location **\$190,000. #3930**

Call today and ask about various acreage and recreational properties. Something for everyone!

★ HOMES ★ FARMS ★ COMMERCIAL ★  
★ ACREAGE/LOTS ★ RECREATIONAL PROPERTIES ★

### MAKITRA REAL ESTATE, INC.

4 West Steuben Street, Bath, New York 14810  
**607-776-6665** after hrs **607-776-2468/2386**  
[www.makitrarealestate.com](http://www.makitrarealestate.com)

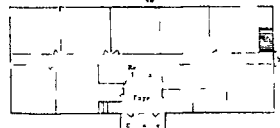
## Offered With Pride by SUBURBAN REALTY \$550,000

1275 Birch Road, Lebanon

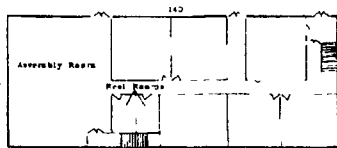
MUNICIPALITY - South Lebanon Township

DIRECTIONS - From Lebanon - East on Route 422 to Right onto Birch Road at Vo-Tech follow Birch Road 1/2 mile to property on Right Look for Signs

First Floor



Daylight Basement



- 8+ acres
- Zoned R-1 Low Density Residential
- Macadam Parking for 40-50 Cars
- Public Water & Sewer
- 8,360 sq. ft Main Level w/8 Classrooms, Foyer, Office, 2 Restrooms and 3 Misc. Rooms
- 8,120 sq. ft. Finished Lower Level w/Assembly Room, 6 Classrooms, 2 Restrooms, Outside Entrances to Open Rear Lawn w/Recreational Fixtures

For more information or to schedule a showing of this Property please call Nelson Ebersole, REALTOR (717) 867-4487

**SUBURBAN REALTY**  
30 West Main Street  
Annville, PA 17003  
(717) 273-9358 or (717) 867-4487

### Small Hobby Farm

50 plus acres. Nice little 3 bedroom 1 bath home. Almost totally remodeled Big Barn (needs some work). Lots of other land available.

Asking only \$59,900.

### Small Dairy Farm

190 acres, 175 tillable balance pasture 65 tie stall barn with 4 unit pipeline 700 gal bulk tank 18x50 and 20x60 silos both with very good unloaders Very nice 4 bedroom 1-1/2 bath home with hardwood floors, eat-in kitchen 4-car attached garage Several other sheds and outbuildings

Asking Only \$114,900.

## Finley Real Estate

RUSSEL J. FINLEY  
BROKER • OWNER



Rural Properties, Farms  
Residential, Business

207 Montgomery St.  
Ogdensburg, NY 13669

24 Hour Phone #

315-393-6325

**CANCELLED**

**FARM FOR SALE**  
Will receive sealed bids until 11 a.m. Saturday 9/9/00 with right to accept or reject any or all bids.

103 ac., 65 tillable, balance pasture & mountain w/stream length of farm Can handle steer heifer or dairy cows Large barn w/100+ stall capability w/manure pit Large free stall heifer barn & 50x100 covered machinery shed not shown 2 large houses Feed available Located 2 miles south on Rt 655 off Rt 322 @ Reedsville exit in Big Valley Milflin County PA Extra rented ground possible available Gisewhite Bros POB 76, Milroy PA 17063 717-667-3105



CAI AUCTIONEERS  
REALTOR  
APPRAISER



**AUCTION or BROKERAGE**  
CALL FOR THE ADVANTAGES OF EACH.  
WITH 31 YEARS OF EXPERTISE AS A  
CAI AUCTIONEER & REALTOR,  
I CAN HELP YOU MAKE THE PROPER DECISION.  
A VISIT TO EXPLAIN WILL COST YOU NOTHING.

**SOLD THIS WEEK!!!** SNYDER CO. - 120 acre dairy farm it took ONLY 3 WEEKS (THANKS).

**NEW OPPORTUNITY!!!** This BLAIR COUNTY Dairy & Hol. operation is a must on your list. This Morrison's Cove farm is level to gentle slope and has all the facilities you'll need. There is a nice farm family home and best of all the price is attractive if you are serious. I explain how you can have this on a price you cannot afford to pass up.

I have other farmers I'm working with that have farms for sale. Call me first for all your farm needs.

Needs are still growing

1. Up to 175 acres in Manor Township Linc. Co.
2. 350 to 400 acres below Williamsport
3. 100 acres of woodland with a stream Williamsport area
4. 10 or more dairy farms from \$300,000 & up
5. A general farm with 90 acres tillable around \$250,000 +

**GIVE A YOUNG FARMER AN OPPORTUNITY TO GET STARTED.**  
**HELP WITH THE FINANCING. WE DO "IRC" 1031 Tax Deferred Exchanges.**

My listings turn to "SOLD."

Don't Wait To Buy Real Estate - Buy Real Estate & Wait  
**SANFORD G. LEAMAN REALTOR,**

CAI AUCTIONEER, CFS, CMI, GRI  
101 WHITE OAK DRIVE, LANCASTER, PA 17601-4842  
(717) 569-4264 or Toll Free 1-800-836-8113, FAX 717-569-8847  
"See Me On The Web" <http://www.lamnauct.com> email [farmlboy@lamnauct.com](mailto:farmlboy@lamnauct.com)

## CALL COLDWELL BANKER FARM & RURAL PROPERTY DIVISION

**CENTRE COUNTY**  
NEW LISTING  
Rebersburg Area - Brush Valley - 38 acre tillable land parcel very nice setting level to gently rolling topography Check out the details at [www.cbur.com](http://www.cbur.com) or give us a call!

**HUNTINGDON COUNTY**  
REDUCED!  
14 acre country residence Shade Gap area 9.5 acres tillable Large pond nice rural area \$175,000 Additional 15.25 acres parcel available Complete details at [www.cbur.com](http://www.cbur.com)

**CENTRE COUNTY**  
Centre Hall Area 11 acre country estate Call for details or view the brochure and slide show on line at [www.cbur.com](http://www.cbur.com).

View our complete farm, farmette, rural acreage, woodland, and cabin lists and brochures at [www.cbur.com](http://www.cbur.com).  
**CALL TOLL FREE FOR DETAILED BROCHURES**  
ADDITIONAL FARMS, FARMETTES, VACANT LAND AND HUNTING LAND PARCELS AVAILABLE.  
FREE LISTS

**COLDWELL BANKER**  
**UNIVERSITY REALTY**  
126 E Foster Ave. State College, PA 16801  
800-669-4925 Toll Free

Don Myers 814-422-8111  
Dale Sharman 814-892-8148

**DEMEREER REALTY**  
171 N. Gardiner Rd.  
Little Falls, NY 13365  
Phone (315) 823-0288  
George Demeree, Broker [www.demereerealty.com](http://www.demereerealty.com)

**#30-A - NEW LISTING** - Hobby farm w/43 A - 20 tillable - 2 story barn for beef or horses & 38x40 ft mach shed - good 6 rm home & 2-car garage w/circle drive-way - some appliances stay - 1000 gal septic system - also spring & trout stream **\$90,000.**

**#657 - NEW LISTING** - Dairy farm w/270 A - 103 tillable - 60 pasture & 100 woods - combination one & two story barn w/84 cows - pipeline, 2 bulk tanks ten small box stalls with rm for 40 heifers - 2 (20x70) Harvestores w/unloaders, 2 mach sheds (60x36 & 30x30) & 50x30 ft open heifer barn - also good 10 rm home all new upstairs - 20x40 ft pool, yr around creek & well - **\$325,000.**

**#654 - Free stall dairy w/597 A.** - 400 tillable for 114 head plus calf & heifer barns for 80 plus head - double-5 parlor with ATO's, 2 lg pole barns, heated shop, 55x120 ft bunk silo w/concrete floor, 3 lg silos, 2 lg grain bins & elevator w/dump pit for 50 ton - V Good 10 rm brck home & 14x70 ft mobile home both have 2-car garages - 2 creeks - one w/trout - this farm features EX land w/lg fields - **\$450,000.**

**#239 - Good soils & location** - 282 A dairy farm w/137 tillable - 2 story barn w/72 on 2" pipeline, calf barn w/31 stalls, heifer barn w/50 stalls, lg pole barn for storage or free stalls, 3 lg silos w/unloaders, also fully re-modeled 11 rm home - very well kept - & 12 rm 2 fam rental house in good cond - also potential gravel bed - **\$288,000 - REDUCED TO \$240,000.** Could be bought for **\$198,000** without rental house and 22 acres

**#25-A - Nice small farm on dead-end rd.** - 179 A w/90 tillable, 70 pasture & 10 woods - 50 cow barn has 2" pipeline, 1000 gal BT & wide fronts - 2 silos w/unloaders, 2 grain bins, lg garage & 40x60 ft mach shed - also V Good 3 B R ranch home w/2 stall garage, in-ground pool & deck EX value at - **\$150,000.**

**#809 - 482 A. dairy farm w/300 tillable** - lg free stall barn for 140 head, 2 story barn w/64 stalls, 160x34 ft one story barn - also dry cow barn, lg parlor & holding area, 120x24 ft covered feeder w/solid floor, 3 months manure lagoon, 4 bay commodity shed, 2 lg mach sheds, horse barn & shop - also 3 lg silos w/unloaders, 400 ton grain drying bin & 19 rm 2 fam home, lg 3 B R ranch plus two 2 B R apartments - also features 100x230 ft lighted horse arena & stands - asking **\$925,000.**